

# For Sale

# ±1,119 SF

1458 S San Pedro St #110  
Los Angeles, CA 90015



For more information, please contact:

**Daniel Park**

(213) 446-0396

[Danielpark777@hotmail.com](mailto:Danielpark777@hotmail.com)

DRE# 01227056

**PARK INDUSTRIAL**

SPECIALIZING IN INDUSTRIAL REAL ESTATE SERVICES

Park Industrial Realty  
800 McGarry St, 5<sup>th</sup> Floor  
Los Angeles, CA 90021  
Corporation DRE# 01983713

# Property Information

Address: 1458 S San Pedro St #110  
Los Angeles, CA 90015

Unit SF: 1,119 SF

Year Built: 2008

Ceiling Height: 18'

Construction: Reinforced Concrete

Zoning: M2

Sale Price: \$450,000 (\$402.14/SF)

- First floor commercial condo unit in LA FACE Mart in Downtown LA
- At the center of Fashion District
- LA FACE Mart is a 300,000 SF mall type retail/office equipped with 10 elevators, 8 escalators and 750 parking spaces.
- Plenty of parking for tenants & visitors
- 18 feet high ceiling
- Great for creative space, studio and/or any professional office use
- Very secure and safe with onsite security personnel
- Close to 10 freeway
- Motivated Seller

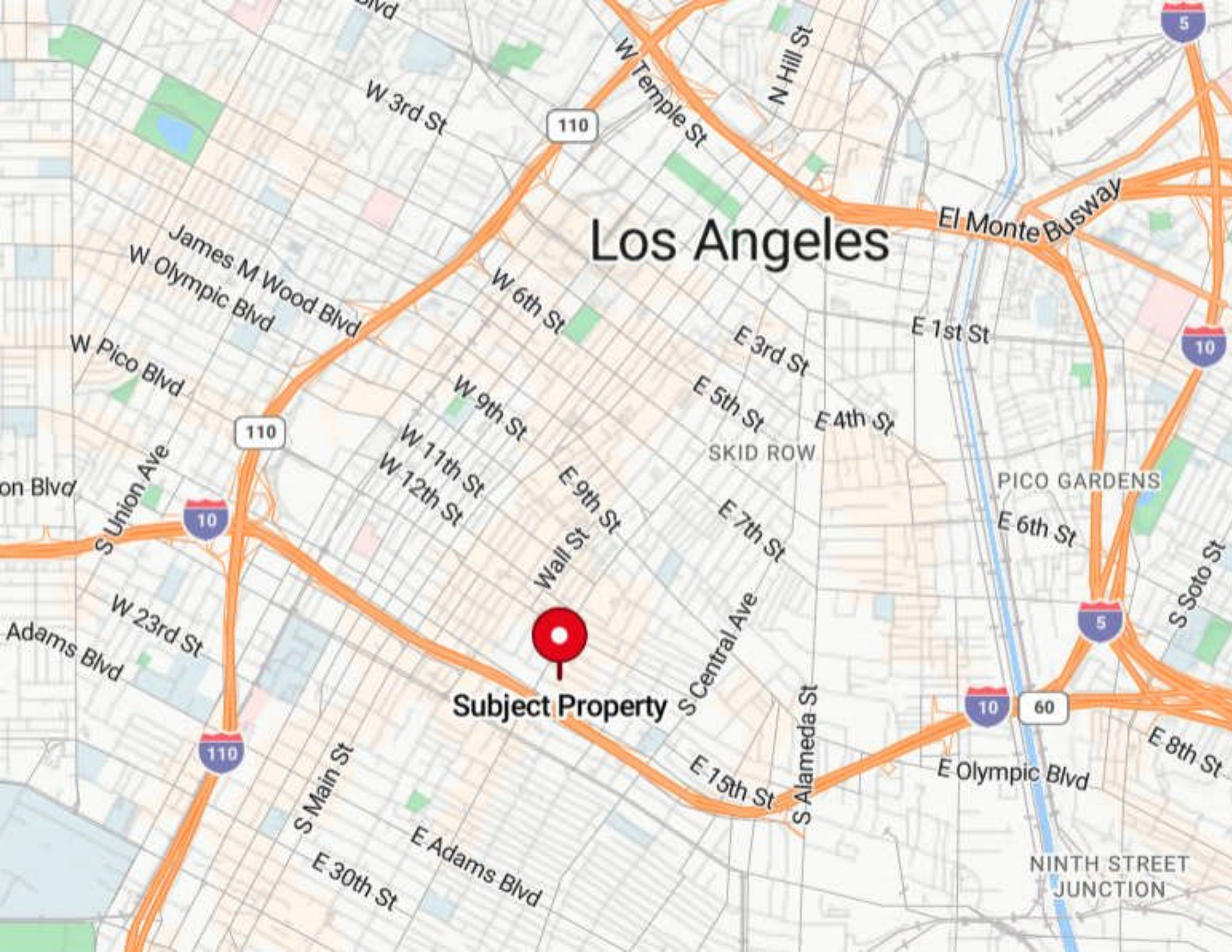
All information has been furnished from sources which we deem reliable, but for which we assume no liability. All measurements are approximate. Broker/Owner do not warrant its accuracy. Buyer/Lessee must verify all information.



# Los Angeles



**Subject Property**



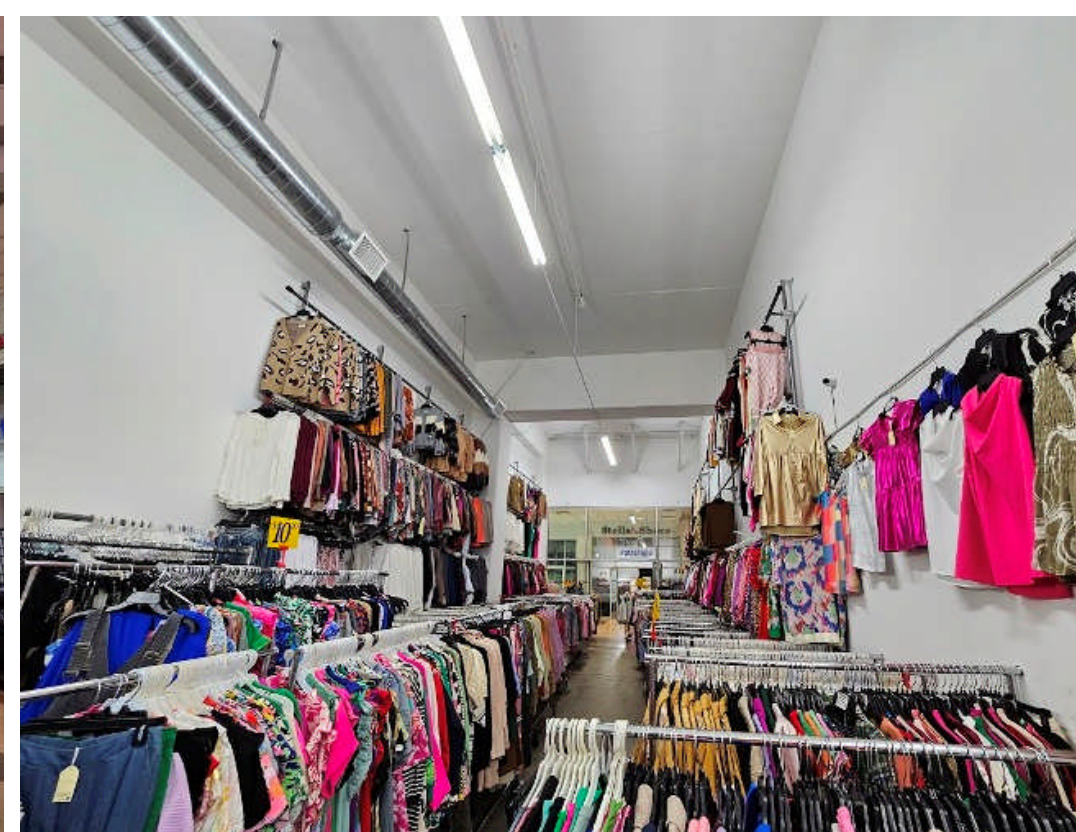
**B & S** Sales Inc.















LA FACE  
MART

1450  
1450