

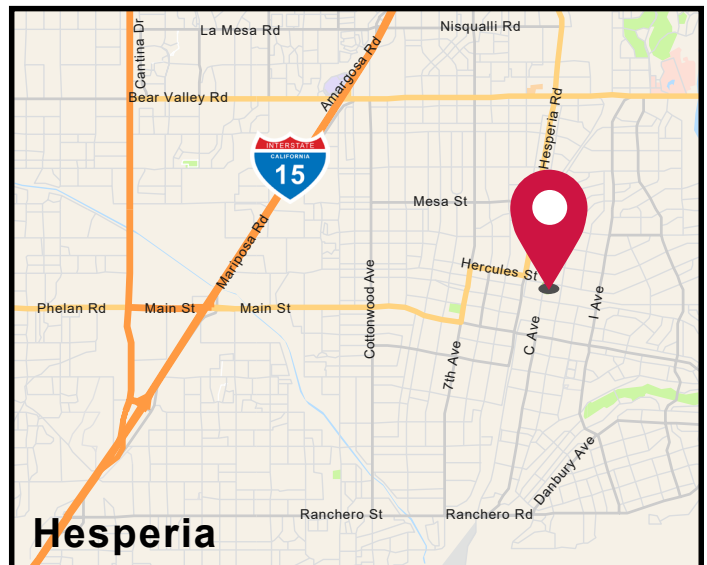
FOR LEASE ±8.61 ACRE STORAGE YARD

9927 C Avenue, Hesperia CA 92345



PROPERTY HIGHLIGHTS

- ±8.61 Acres
- ±5,500 SF Shop with 14'x12' Ground Level Doors
- ±3,000 SF House/Office
- ±20,200 SF of Canopies
- Fenced, Secured, and Partially Paved Yard
- Close Proximity to 15 Freeway
- Zoning: General Industrial (verify with city of Hesperia)



TRENT KIMSEY

951.276.3649 // DRE#: 02066678
TKIMSEY@LEERIVERSIDE.COM

CRAIG YOCUM

951.276.3625 // DRE#: 00942165
CYOCUM@LEERIVERSIDE.COM

ALEXEY ZABOLOTSKIKH

951.276.3606 // DRE#: 01428540
ALEX@LEERIVERSIDE.COM

FOLLOW US: BIG YARD BUILDING BROKERS @BIGYARDBUILDINGBROKERS BIG YARD BUILDINGS

3240 Mission Inn Avenue, Riverside, CA 92507 | 951.276.3600 | Corporate DRE#: 01048055 | www.lee-associates.com

No warranty or representation has been made to the accuracy of the foregoing information. Terms of sale or lease and availability are subject to change or withdrawal without notice. Lee & Associates Commercial Real Estate Services, Inc. - Riverside.

FOR LEASE ±8.61 ACRE STORAGE YARD

9927 C Avenue, Hesperia CA 92345

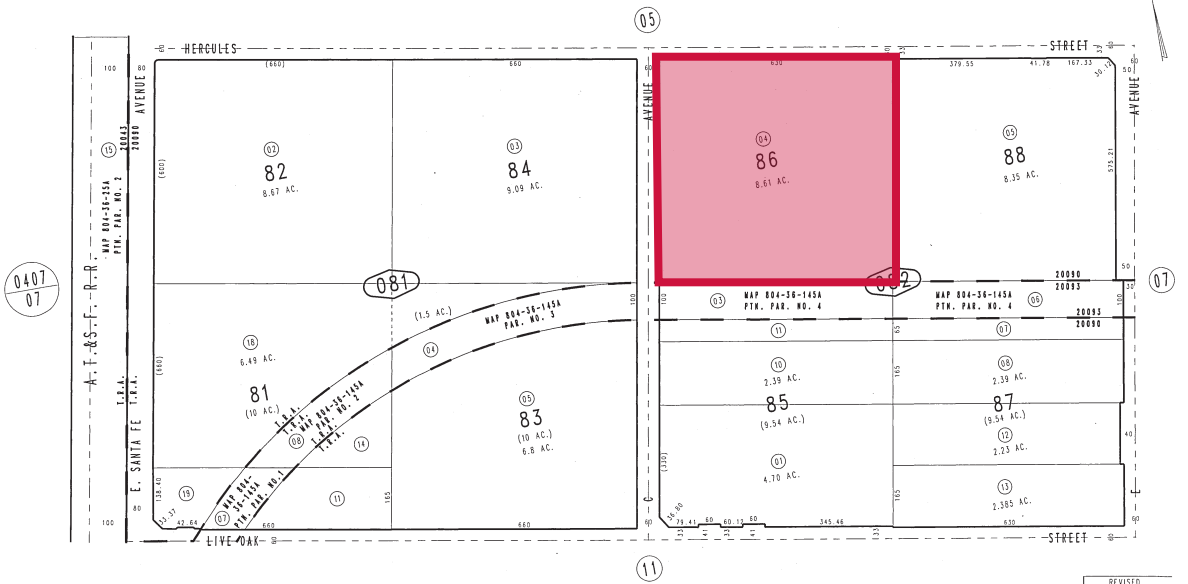


PARCEL MAP

PERMITTED USES

ZONING MAP

SPECIFIC PLAN



TRENT KIMSEY

951.276.3649 // DRE#: 02066678
TKIMSEY@LEERIVERSIDE.COM

CRAIG YOCUM

951.276.3625 // DRE#: 00942165
CYOCUM@LEERIVERSIDE.COM

ALEXEY ZABOLOTSKIKH

951.276.3606 // DRE#: 01428540
ALEX@LEERIVERSIDE.COM

FOLLOW US: BIG YARD BUILDING BROKERS @BIGYARDBUILDINGBROKERS BIG YARD BUILDINGS

3240 Mission Inn Avenue, Riverside, CA 92507 | 951.276.3600 | Corporate DRE#: 01048055 | www.lee-associates.com

No warranty or representation has been made to the accuracy of the foregoing information. Terms of sale or lease and availability are subject to change or withdrawal without notice. Lee & Associates Commercial Real Estate Services, Inc. - Riverside.