

A woman with long blonde hair, wearing a white t-shirt and denim shorts, is sitting on the white railing of a boat. She is barefoot and looking out at the ocean with her head tilted back. The ocean is a deep blue with white-capped waves. In the background, there are distant mountains under a soft, pinkish-orange sunset sky. The text 'MARINA SQUARE' is overlaid in a large, white, serif font across the middle of the image.

MARINA SQUARE

4720 Lincoln Blvd. Marina Del Rey, California

one

WELCOME TO MARINA DEL REY

Lifestyle
Paddleboarding
Dining
Events
Shopping

Marina del Rey is an iconic coastal community known for its access to a most savvy consumer just as much as its water access, trendy dining and shopping. Just four miles north of LAX and next door to the popular Venice Beach, Abbott Kinney, and Playa Vista, Marina del Rey serves as the prime location to experience California on and off of the water.

two

WELLNESS

Marina Square hosts a space for unique and in-demand retailers to thrive and profit.



SHOPPING + SERVICE

Marina Square is the place to thrive and profit. Join our exceptional lineup – directly accessed from Lincoln Boulevard.



DINING

The property was purposefully designed with frequency in mind, thanks to the project's excellent daytime as well as evening population. Visitors can grab coffee at Peet's or a cupcake from Susie Cakes while here, and after a class of F45 or a beauty service at LaserAway.

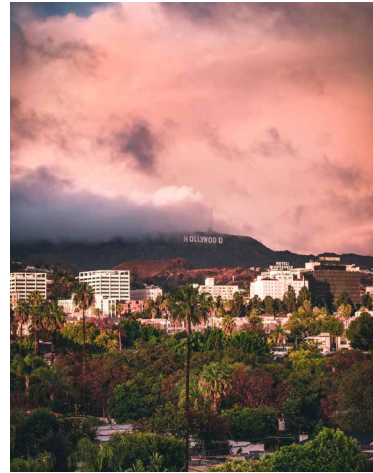


three

DEMOGRAPHICS

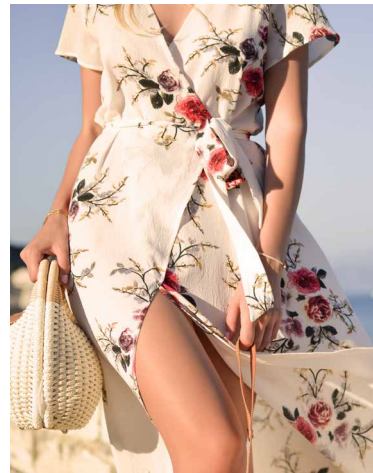
Marina del Rey offers locals and visitors everything they need, both on and off the water. It neighbors booming areas including Venice Beach, Santa Monica, and Culver City. Next door is Playa Vista, the "Silicon Valley" of the south.

Marina del Rey's continued success has spurred unprecedented development, including additional housing that caters to an increasingly youthful population and top-tier workforce.



Population growth 2018-2023

4.67%



Median Age

39.1

Daytime Population

112,700 (3 mile)



2018 Average Household Income

\$111,600 (1 mile)



*“LA’s Marina continues to thrive as
an active waterfront playground for
both visitors and LA locals,”*

MARINA DEL REY CONVENTION
& VISITORS BUREAU



1

Waterside

Bluemercury
DryBar
L'Occitane
Paper Source
Sephora
Kreation Organic
Mendocino Farms
Sweetgreen
Sugarfish by Sush Nozawa
Solidcore
Shake Shack

2

Pier 44

Trader Joe's
West Marine

3

MARINA
SQUARE

5

2

1

THE MARINA

5

The Boardwalk Shops

Alfred
HiHo Burger
Kazunori
Uovo
Pedego Biks
REI Co-Op

3

Marina Marketplace

Equinox
Gelsons
Tender Greens
Le Pain Quotidien
ULTA
Ruth Chris Steak House
Yard House

4

Runway

Panini Grill
Hopdoddy Burger Bar
Whole Foods
Urban Plates
Studio MDR

NEARBY

marina
square

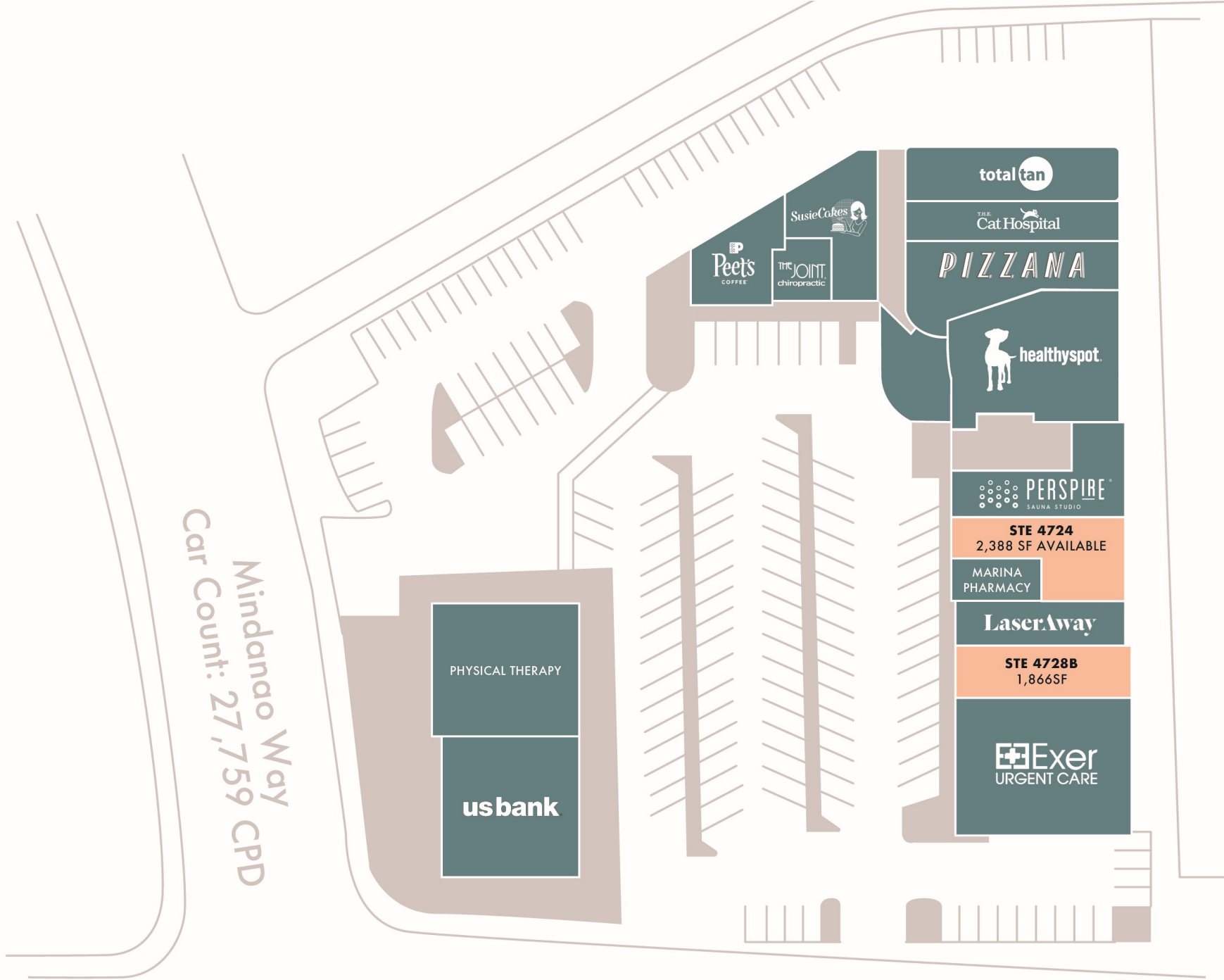
location

six



TRADE AREA

Marina Square is perfectly located near all major LA area destinations, making it highly attractive to consumers. Its neighbors include booming tourist areas such as Venice Beach and Santa Monica, as well as Playa Vista.



Lincoln Boulevard
Car Count: 55,757 CPD

THE OPPORTUNITY

Take advantage of Marina Square's prime accessibility at Lincoln Blvd and Mindanao Way, two major arteries that converge with more than 83,000 cars per day. Not to mention, immediate proximity to the 90 freeway.

Traffic Counts

Mindanao 27,749 CPD

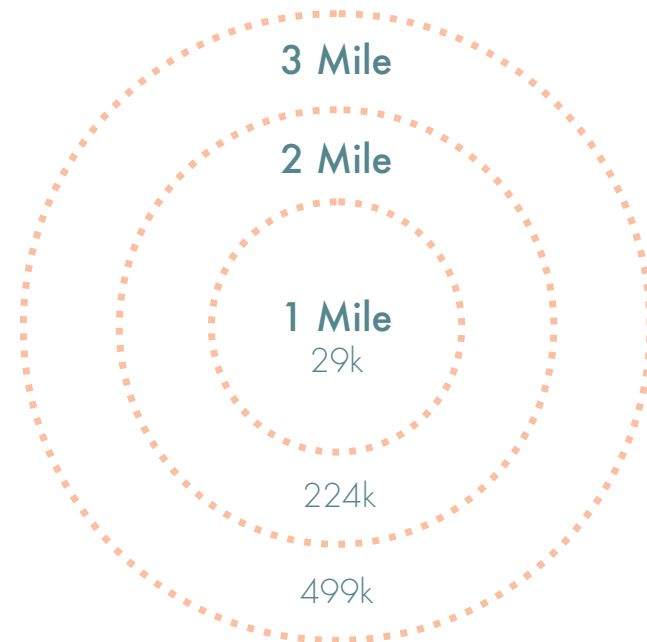
Lincoln 55,757 CPD

Prime Space Availability

Unit 4722: 2,041 SF

Parking Count

180 Spaces



Population within 1, 2, and 3 miles
of Marina Square.

*“Thousands have lived without love,
Not one without water.”*

W.H. Auden



JOIN US AT MARINA SQUARE

Jillian Sabaugh
jillian@us-retail.com
949.293.2888