



ALLIANCE HP

AVAILABLE FOR LEASE

**6 Horne Drive
Folcroft, PA 19032**

AVAILABLE

31,138 SF Industrial Building – Available for Occupancy

OVERVIEW

Property Highlights

- Office space: 5,842 square feet
- Land area: 1.64 acres
- Building dimensions: 151'4" x 161'4"
- Ceiling heights: 20'4"
- Column spacing: 25' x 40'
- Loading: 2 tailgates and 1 drive-in
- Electric: 400 amps, 240 volts, 3 phase, 4 wire
- Parking: 25 vehicle spaces
- Location: I-95 Corridor with major highway and truck access
- **Alliance HP:** Experienced, well capitalized ownership. Visit: www.alliancehp.com

FOR MORE INFORMATION

Don Grimes, Senior Vice President
e: dgrimes@sshco.com
d: 610-601-4204

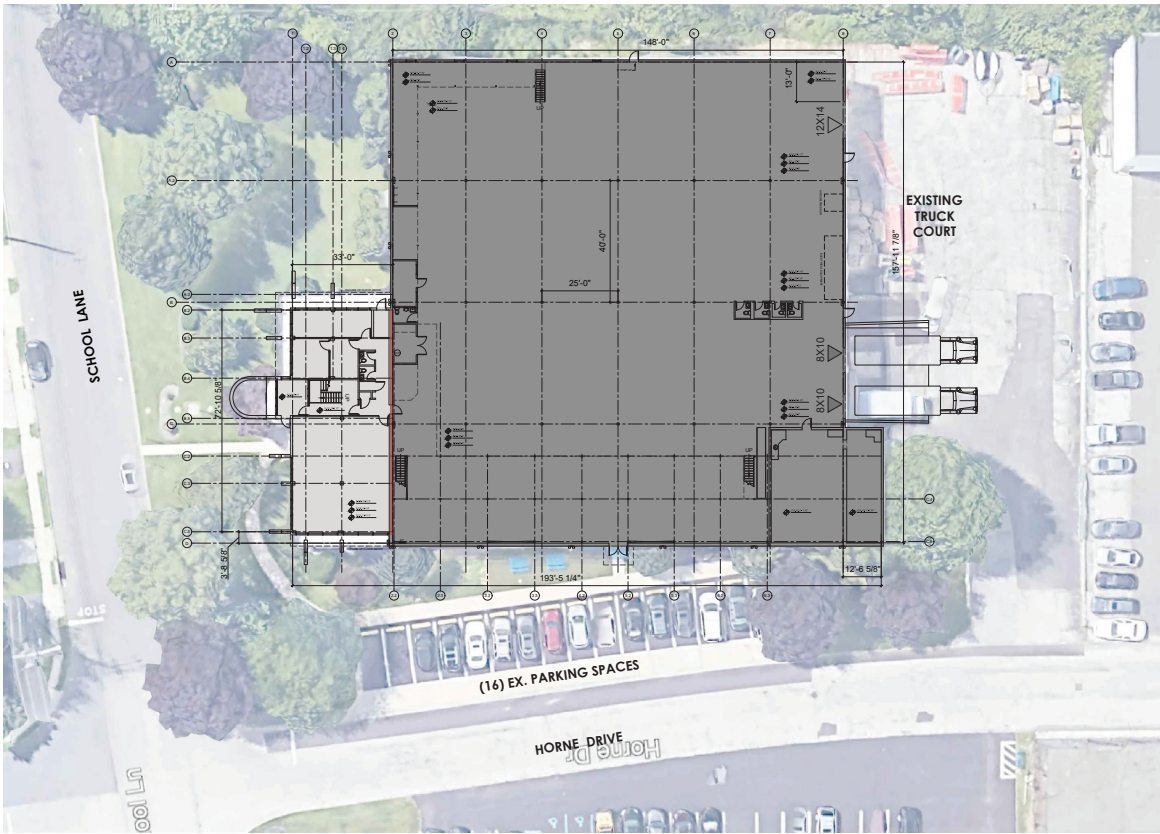
Kevin Hagenberg, Partner
e: khagenberg@sshco.com
d: 610-601-4203

Brendan Schneider, Sr. Associate
e: bschneider@sshco.com
d: 610-601-4207

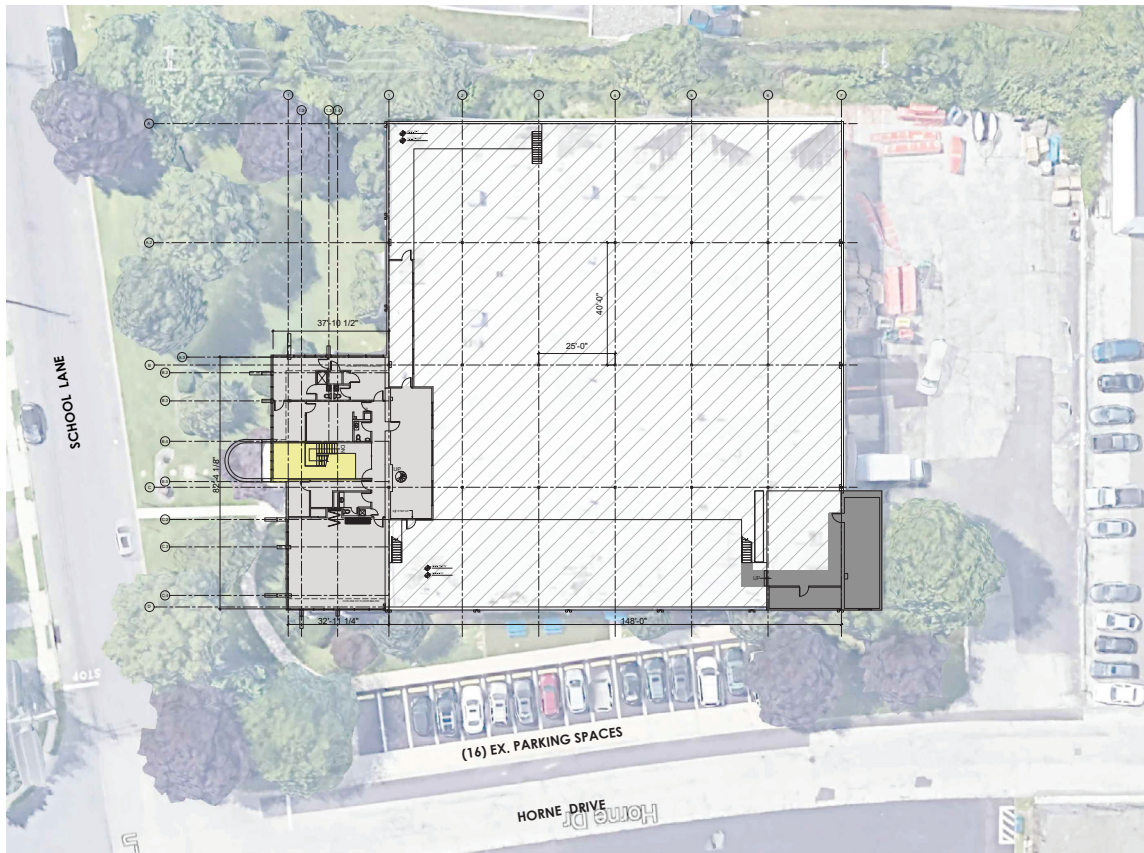


ALLIANCE HP

Existing 1st Floor Plan



Existing 2nd Floor Plan

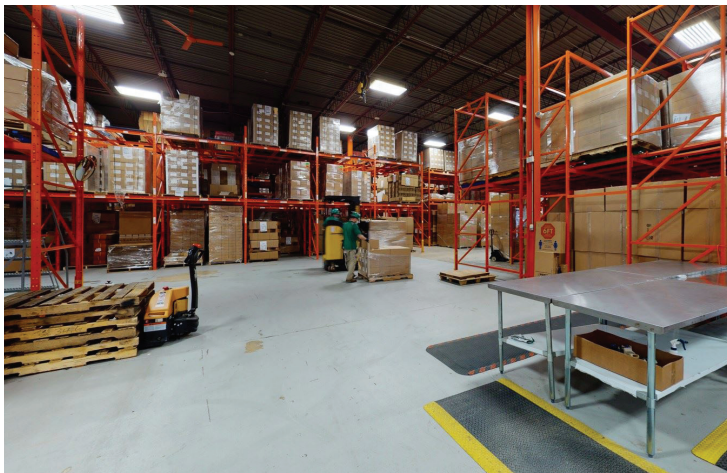
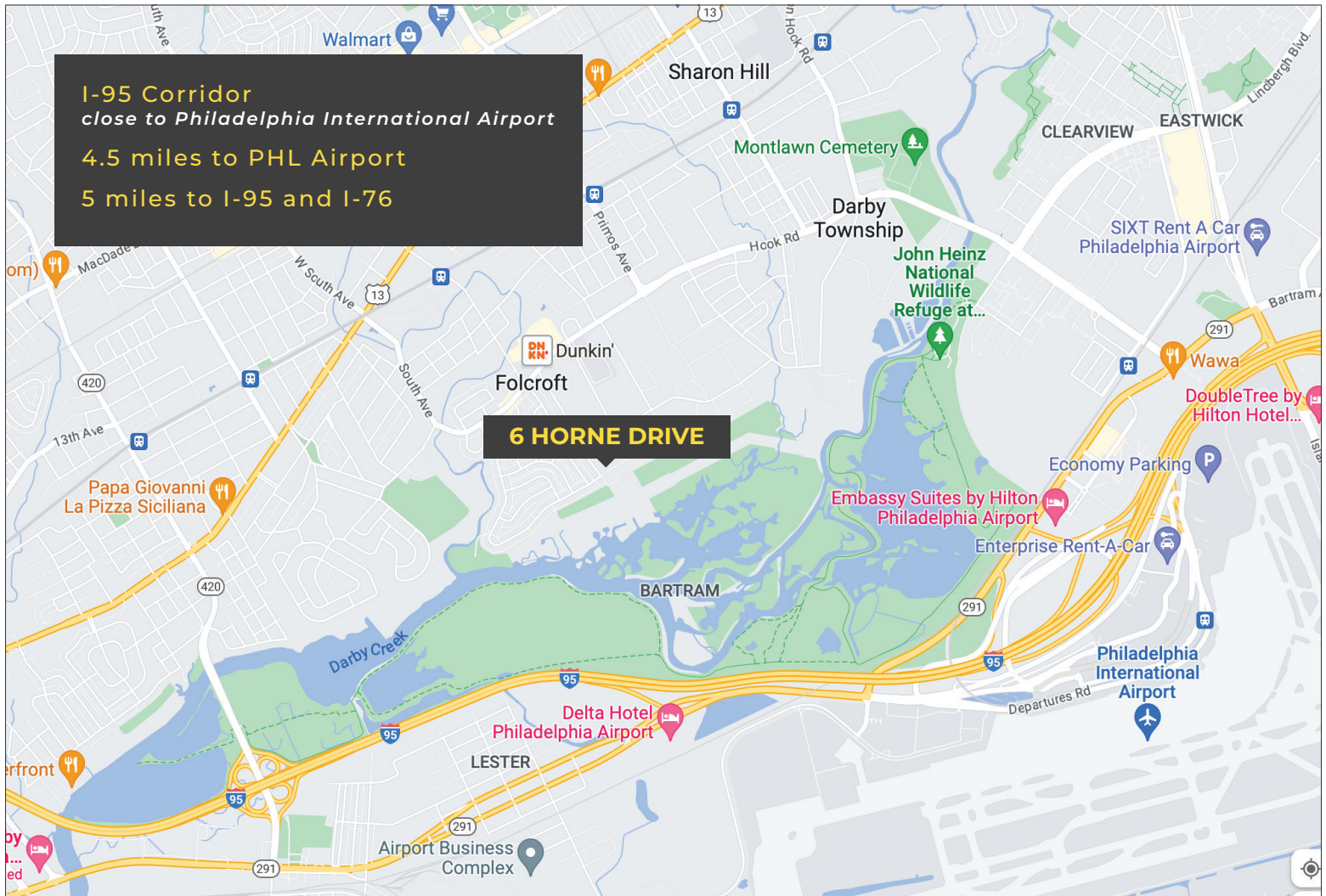




ALLIANCE HP

6 HORNE DRIVE, FULCROFT

Premier Location



FOR MORE INFORMATION

Don Grimes, Senior Vice President
e: dgrimes@sshco.com
d: 610-601-4204

Kevin Hagenberg, Partner
e: khagenberg@sshco.com
d: 610-601-4203

Brendan Schneider, Sr. Associate
e: bschneider@sshco.com
d: 610-601-4207