

Now  
Open



Subject Property

Offering Memorandum

# Busy Bees

2720 W. Baseline Road, Laveen Village, AZ 85339

In Association with Scott Reid & ParaSell, Inc. | A Licensed Arizona Broker #CO709902000



The information contained in the following offering memorandum is proprietary and strictly confidential. It is intended to be reviewed only by the party receiving it from Essential Capital Advisors and ParaSell, Inc. and it should not be made available to any other person or entity without the written consent of Essential Capital Advisors and ParaSell, Inc.

By taking possession of and reviewing the information contained herein the recipient agrees to hold and treat all such information in the strictest confidence. The recipient further agrees that recipient will not photocopy or duplicate any part of the offering memorandum. If you have no interest in the subject property, please promptly return this offering memorandum to Essential Capital Advisors and ParaSell, Inc.. This offering memorandum has been prepared to provide summary, unverified financial and physical information to prospective purchasers, and to establish only a preliminary level of interest in the subject property.

The information contained herein is not a substitute for a thorough due diligence investigation. Essential Capital Advisors and ParaSell, Inc. has not made any investigation, and makes no warranty or representation with respect to the income or expenses for the subject property, the future projected financial performance of the property, the size and square footage of the property and improvements, the presence or absence of contaminating substances, PCBs or asbestos, the compliance with local, state and federal regulations, the physical condition of the improvements thereon, or financial condition or business prospects of any tenant, or any tenant's plans or intentions to continue its occupancy of the subject property.

The information contained in this offering memorandum has been obtained from sources we believe reliable; however, Essential Capital Advisors and ParaSell, Inc. has not verified, and will not verify, any of the information contained herein, nor has Essential Capital Advisors and ParaSell, Inc. conducted any investigation regarding these matters and makes no warranty or representation whatsoever regarding the accuracy or completeness of the information provided. All potential buyers must take appropriate measures to verify all of the information set forth herein. Prospective buyers shall be responsible for their costs and expenses of investigating the subject property.

Exclusively Offered By:

## Education Properties Group

### Milo Spector

Executive Managing Partner, Co-Founder  
Education Properties Group  
(510) 461-4505  
milo@ecadvs.com  
Lic: CA 01959211

### Remmington Penn

Associate Director  
(702) 469-1474  
remmington@ecadvs.com  
Lic: CA 02220211

### Scott Reid

ParaSell, Inc. | Broker of Record  
scott@parasellinc.com  
(949) 942-6585  
AZ LIC #BR707387000

In Association with Scott  
Reid & ParaSell, Inc. | A  
Licensed Arizona Broker  
#CO709902000

Notice to AZ Residents and Property Owners:  
Consistent with state of AZ regulations, please direct all  
inquiries to AZ Broker.

## Busy Bees

2720 W. Baseline Rd, Laveen Village, AZ 85339

LISTING PRICE  
**\$8,694,659**

CAP RATE  
**6.50%**

### INVESTMENT HIGHLIGHTS

- Brand New 2025 Construction, Now Open
- New 15-Year Absolute NNN Lease w/ No Landlord Responsibilities
- Corporate Lease & Corporate Guaranty (Full Duration of the Lease)
- 10% Rental Increases Every 5 Years
- Busy Bees Operates 13 Schools in AZ w/ 2 Under Construction (Including This Location)
- Additional Locations Available (Contact Broker)

### LOCATION HIGHLIGHTS

- Strong High Growth Location in the Phoenix Metro
- Population Counts Exceed 197K in a 5-Mile Radius & Are Projected to Grow 7.86% by 2030
- Average HH Income of \$129K+ in a 1-mile Radius & Are Projected to Grow 15%+ by 2030
- Nearby National Brands Lowe's, Starbucks, Safeway, The Home Depot, McDonald's, Chipotle, and More
- Feeder School for Ed & Verma Pastor Elementary School, Ignacio Elementary School, and Sun Valley Academy
- \$8.7 Billion Spent on Education & Day Care in a 10-Mile Radius

### TENANT HIGHLIGHTS

- Busy Bees Operates 1,000 Centers Globally, w/ 160 Centers in the US, and has Strong Growth Plans
- Significant Investment from The Ontario Teacher's Pension (OTP, OTP is Invested In Brands Like Flynn Restaurant Group, PODS, BroadStreet Partners & Many More
- Significant Investment from Temasek Based in Singapore, Temasek Owns a \$382B Portfolio in Financial Services, Transportation & Industrials, Telecommunications, Media & Technology, Consumer & Real Estate, Life Sciences, and Agri-Food
- 100% Corporate, No Franchising
- Busy Bees Was Founded in 1983



## Advantages of Early Childcare/Education Real Estate

### HIGHER CAP RATES WITHOUT SACRIFICE

Over the last 5 years we have seen an 86-basis point spread on average between single-tenant net-leased retail & early education/childcare despite attractive locations & solid tenants due to a lack of knowledge about the property type

### HIGH GROWTH BUSINESS

\$60B+ Industry with projected growth to \$83B+ by 2030

### RECESSION & E-COMMERCE RESISTANT

Early education is considered recession-resistant because working parents continue to rely on childcare regardless of economic conditions, making it an essential, non-discretionary service as well as "Amazon proof"

### EASY TO RE-TENANT

Early education properties are easy to re-tenant, with high demand from other childcare operators and flexible layouts that also appeal to medical and service-based users

### "STICKY" BUSINESS MODEL

Parents don't typically switch schools once enrolling, often enroll all their children & recommend other families

### RECOGNIZED AS AN "ESSENTIAL BUSINESS"

Early education and childcare are recognized by both federal and state governments as essential services, especially during emergencies, due to their critical role in supporting working families and child development.

### INSTITUTIONAL INVESTMENT

Institutional investors are heavily invested in early education businesses and are the predominant owners of early education/childcare real estate

### APPRECIATION POTENTIAL

Early education properties offer strong upside potential, with cap rate compression at market peak and added value if a smaller tenant improves credit or gets acquired

# PROPERTY OVERVIEW

## PROPERTY DETAILS

Address	2720 W. Baseline Rd, Laveen Village, AZ 89509
Ownership Type	Fee-Simple (Land & Building)
Building Size (SF)	13,580
Lot Size (AC)	1.37
Year Built	2025

## LEASE ABSTRACT

Tenant	Valley Child Care and Learning Center #1008, LLC
Guarantor/Signator	Busy Bees US Holdings Limited
Remaining Term	15 Years
Rent Commencement	Est. 11/20/2025
Lease Expiration	Est. 11/30/2040
Net Operating Income	\$565,153
Increases	10% Every 5 Yrs
Options	2, 5 Yr
Lease Type	Absolute NNN
Taxes	Tenant
Maintenance	Tenant
Insurance	Tenant

## RENT SCHEDULE

Year	Annual Rent	Monthly Rent	Rental Increases
1 - 5	\$565,153	\$47,096	
6 - 10	\$621,668	\$51,806	10%
11 - 15	\$683,835	\$56,986	10%

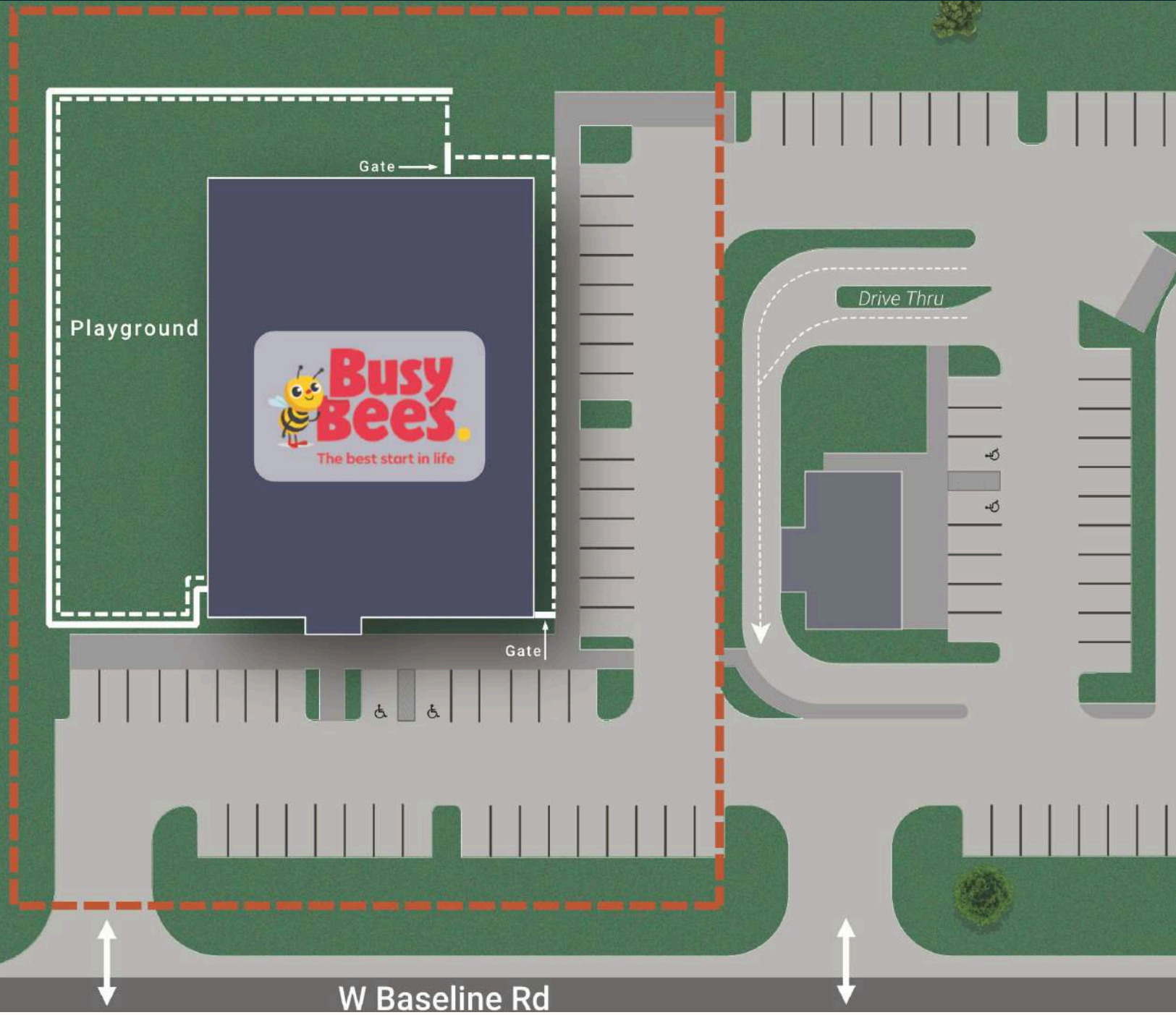
## OPTION PERIODS

Year	Annual Rent	Monthly Rent	Rental Increases
16 - 20	\$752,219	\$62,685	10%
21 - 25	\$827,441	\$68,953	10%



\*All property & lease information to be independently verified by Buyer during Due Diligence Period.

# SITE PLAN



# PROPERTY PHOTOS



Subject Property



Subject Property



Subject Property



Subject Property

# EXTERIOR PHOTOS



# SURROUNDING PHOTOS



# SUBJECT PROPERTY RENDERED ELEVATIONS



<b>TRADE NAME</b>	Busy Bees/BrightPath
<b>COMPANY TYPE</b>	Private
<b>LOCATIONS (US)</b>	160 (US), 1,000 (Globally)
<b>FOUNDED</b>	1983
<b>HEADQUARTERED</b>	London, UK
<b>WEBSITE</b>	www.busybeesna.com

## Top Operators Global Unit Count

1	KinderCare	1,501
2	Learning Care Group	1,071
3	Bright Horizons	1,081
4	Busy Bees	1,000
5	Goddard Schools	600



## ABOUT BUSY BEES

Busy Bees was founded by three couples in 1983 after failing to find childcare facilities that met the standards they wanted for their own children; Marg Randles is still active in the business today.

38 years later, Busy Bees has grown to 1,000 nurseries, catering to 50,000 children and has expanded its operations across the UK, Europe, US, Canada, Singapore, Malaysia, Vietnam, Australia, and New Zealand with ambitious plans for strategic growth.

Busy Bees has a reputation for providing the highest-quality childcare and preschool programs that can be found anywhere, and continuously raises the bar for the early childhood education industry by investing in cutting edge technology and providing unique services that benefit their students, families, and teachers.

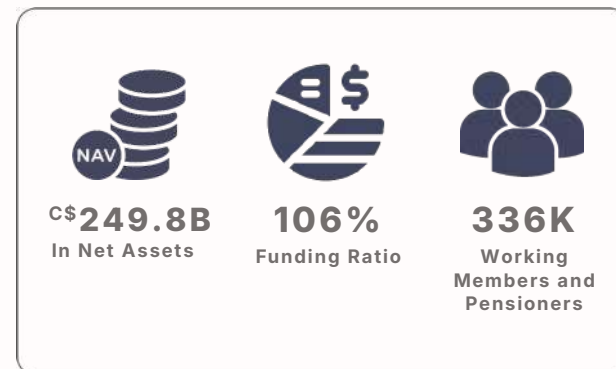


## ABOUT BRIGHTPATH

BrightPath Early Learning in Canada was founded in 2010 and acquired by Busy Bees in 2017. BrightPath Kids is one of North America's largest child care providers. There are currently child care centers across Canada and the USA including New York, Massachusetts, Connecticut, Delaware, Ohio, and Kentucky. Entry to the U.S. market occurred in 2019.



Ontario Teachers Pension Plan ("OTPPR") is Canada's largest single profession pension plan, an independent corporation with 33 years of experience. It currently manages C\$249.8B globally through offices in Toronto, London, Singapore, Hong Kong and New York, with a private equity portfolio of C\$45.2B and a real estate portfolio of C\$26.1B through their real-estate arm, Cadillac Fairview (68 locations). They have a world-class private equity investment portfolio with a track record of top-quartile returns.



## OTP Representative Investments



## TEMASEK

Temasek is an investment company headquartered in Singapore. Supported by thirteen offices globally, it owns a S\$382B portfolio mainly in Singapore, China and the rest of Asia, as of March 2023. Its global portfolio spans a broad spectrum of industries: financial services; transportation & industrials; telecommunications, media & technology; consumer & real estate; as well as life sciences & agri-food.





## LAVEEN VILLAGE, AZ

- Laveen is a community in Maricopa County, Arizona situated eight miles (13 km) southwest of Downtown Phoenix, between South Mountain and the confluence of the Gila and Salt rivers. Parts of Laveen constitute an unincorporated community in Maricopa County, while the remainder falls within the city limits of Phoenix, constituting the city's "Laveen Village" an urban village.
- Laveen Village is separated from the Phoenix area by the Salt River but is still considered a part of the big city.
- Members of the area live by the common motto that Laveen is "where rural is a way of life".
- Laveen Village has an estimated population of over 55,577 as of 2025

## ECONOMIC OVERVIEW

- People in the area enjoy lots of convenient shopping in Laveen at destinations such as Walgreens, Walmart, the Laveen Village Marketplace, Fry's, Safeway, Sprouts, 99 Cent Store, and the Laveen Ranch Marketplace.
- There are a large number of recognizable company names when it comes to local Laveen jobs. Some of the best places to work in Laveen include: Arizona State University (ASU), American Express, Intel Corporation, Amazon and Banner Health.

## NOTABLE DEVELOPMENTS/UPCOMING PROJECTS

- **Laveen Towne Center** - It is a partnership between Vestar and Brio Investment Group. It is planned to include up to 530,000 square feet of commercial and retail space, along with up to 1,456 residential units.
- **Verrado Marketplace** - This will bring more than 50 restaurants and stores to Buckeye, is under construction, with opening anticipated in the first half of next year. The mall will be anchored by Target, Safeway, Ross, Marshalls, HomeGoods and a Harkins Backlot, which includes a movie theater and other family entertainment activities. The project will have about 500,000 square feet of new buildings.



## PHOENIX MSA

- The Phoenix metropolitan area, also known as the Valley of the Sun, the Salt River Valley, metro Phoenix, or The Valley, is the largest metropolitan statistical area in the Southwestern United States, with its largest principal city being the city of Phoenix.
- Region is known for its accessibility, vibrant workforce, and exceptional quality of life as well as being one of the best cities for various industries and operations.
- Phoenix-Mesa metro maintains momentum as nation's No. 1 industrial market – AZ Big Media 2025

## ECONOMIC OVERVIEW

- Phoenix Area - Real GDP: \$322.794B as of 2023.
- The Phoenix MSA is home to 68% of the state's population and has been one of the top growth areas in the nation.
- The current metro area population of Phoenix in 2025 is 4,834,000, a 1.19% increase from 2024.
- The Phoenix MSA has a diverse economy with major employers in healthcare, aerospace, technology, and retail. Banner Health, Freeport-McMoRan, Honeywell Aerospace, Intel, and Sprouts Farmers Market are among the largest employers.
- Phoenix-Mesa metro's economy is one of the best in the US, study finds. - AZ Central 2025
- Top Employers of Phoenix MSA are State of Arizona, Banner Health, Amazon, Walmart, Frys Food Stores, Maricopa County, Wells Fargo, Maricopa County Community College District and Arizona State University.

## NOTABLE DEVELOPMENTS/UPCOMING PROJECTS

- In Phoenix, TSMC is ramping up its multibillion-dollar chip manufacturing campus, contributing over 1,000 new high-tech jobs and reinforcing the city's global role in semiconductor production.
- In Chandler, Applied Materials completed the \$41 million acquisition of a newly constructed industrial facility developed by GO Industrial. The building, located in a key technology corridor, is expected to support Applied's expansion of semiconductor equipment production and related R&D activities.

# CLOSE AERIAL



# CLOSE AERIAL

EAGLE College  
Prep: South  
Mountain  
(489 Students)

Sun Valley  
Academy  
(580 Students)

kb  
HOME

SUBJECT PROPERTY

 **Busy  
Bees.**  
The best start in life

W. Baseline Rd  
41,143 VPD

27<sup>th</sup> Ave  
6,113 VPD

PHOENIX  
17 MILES

# CLOSE AERIAL



PHOENIX 17 MILES

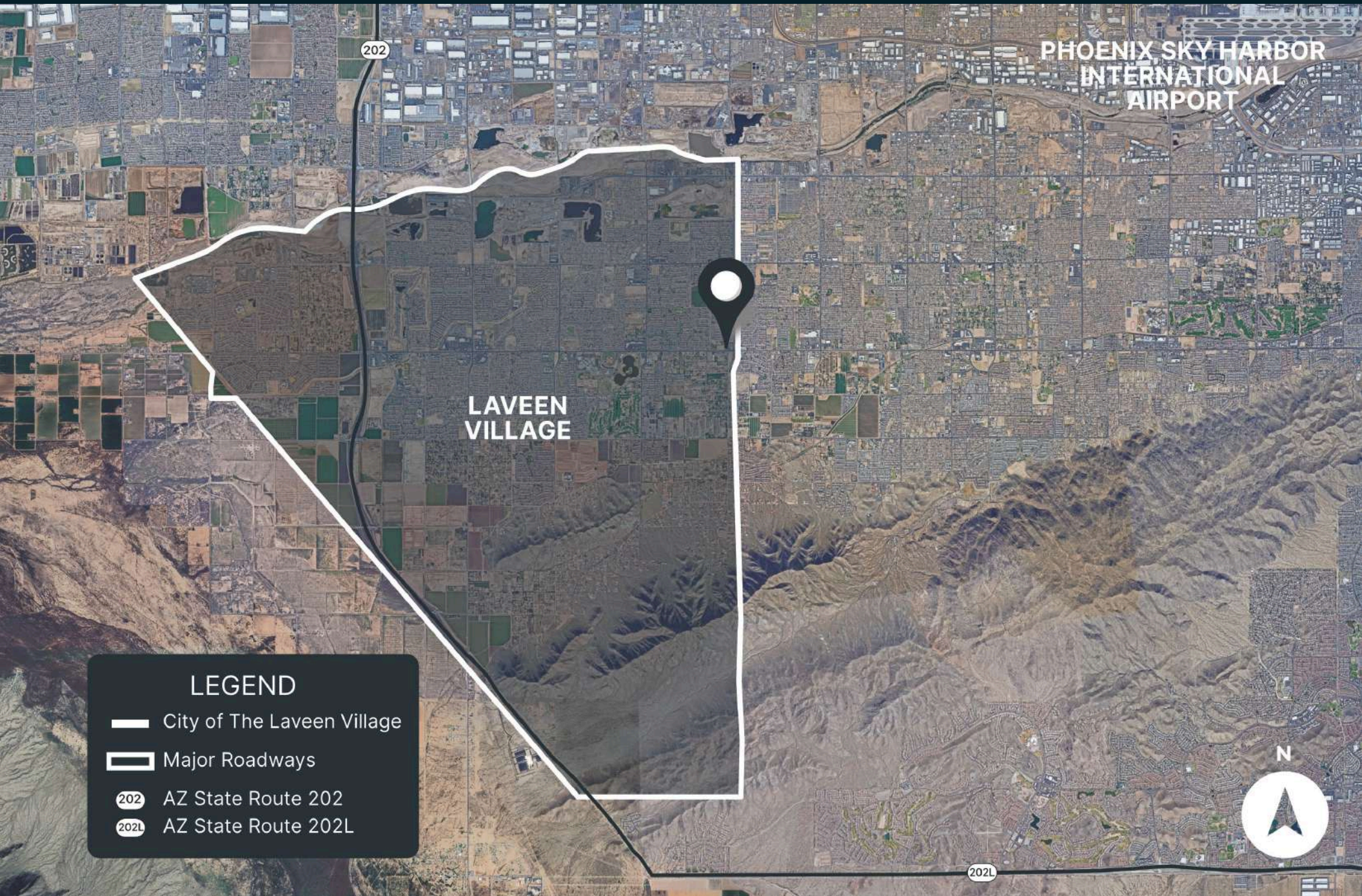
W. Baseline Rd 41,143 VPD

27th Ave 6,113 VPD

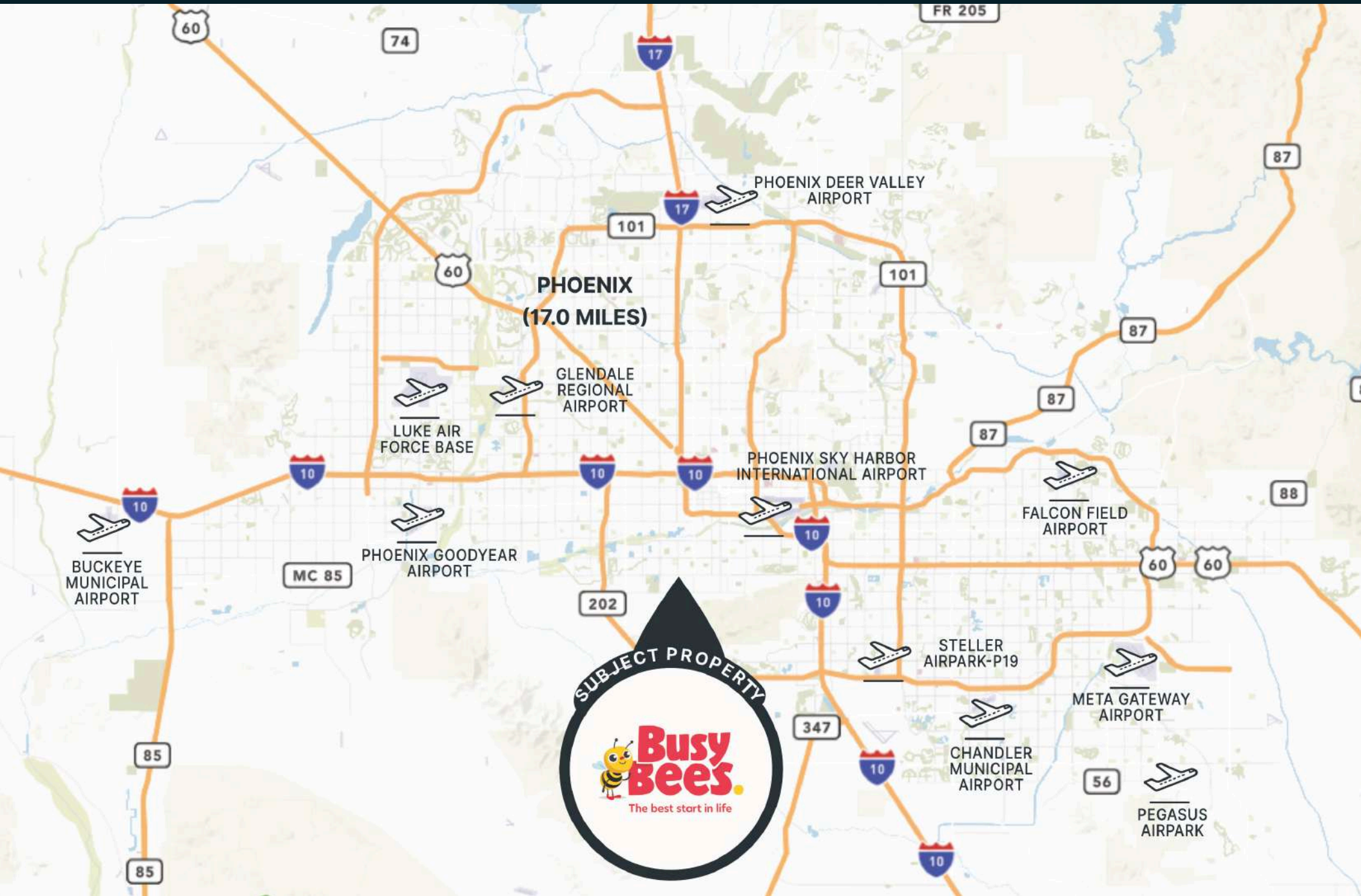
# WIDE AERIAL



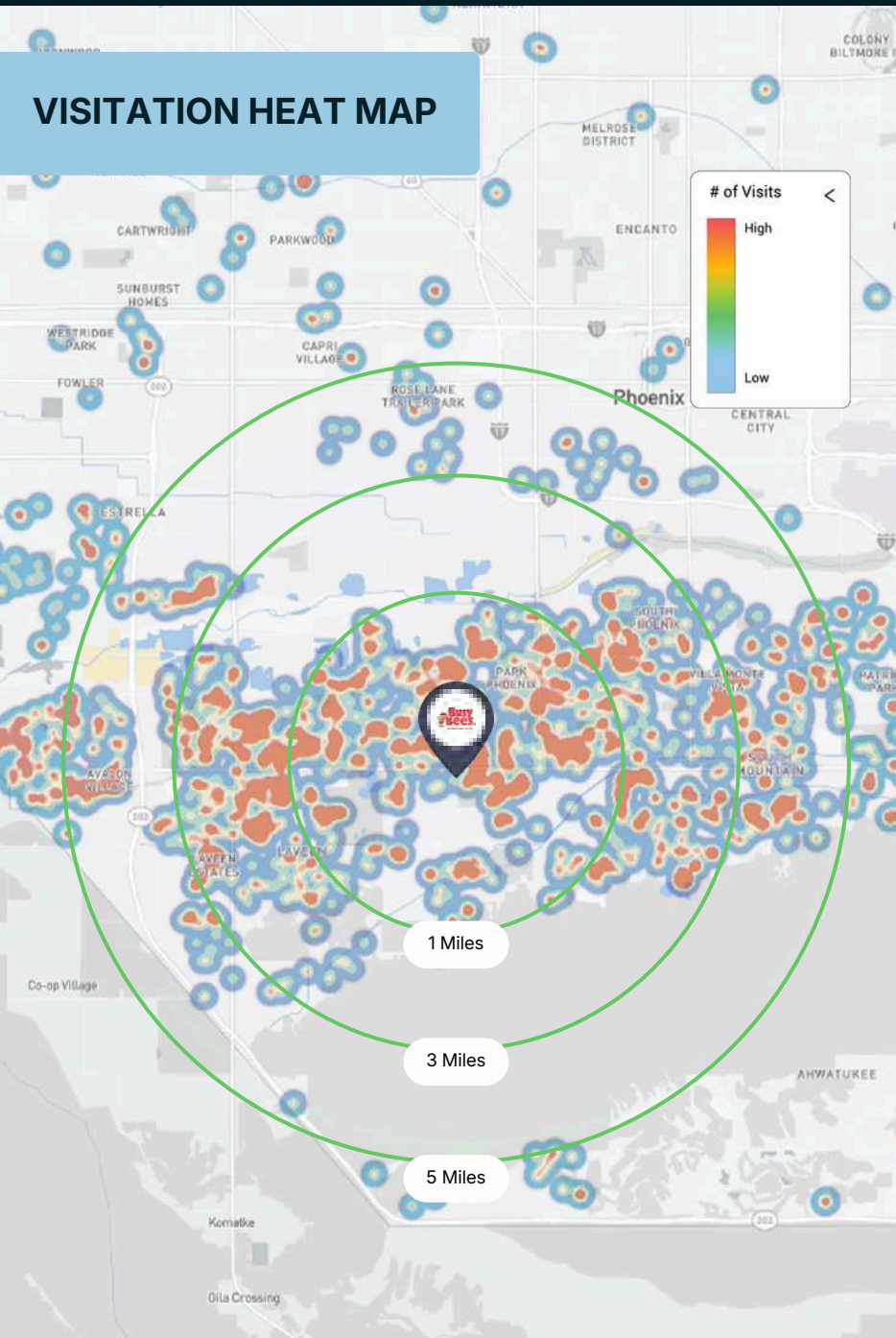
# LOCATION MAP



# REGIONAL MAP



## VISITATION HEAT MAP



## Demographics

2720 W. Baseline Road, Laveen Village, AZ 85339



POPULATION	1 MILES	3 MILES	5 MILES
2025 Population	12,502	97,251	197,932
2030 Population	13,417	102,340	213,487
% Change	7.32%	5.23%	7.86%



AVERAGE HOUSEHOLD INCOME	1 MILES	3 MILES	5 MILES
2025 Average HH Income	\$129,575	\$108,688	\$107,834
2030 Average HH Income	\$149,552	\$125,901	\$126,224
% Change	15.42%	15.84%	17.05%



HOUSEHOLDS	1 MILES	3 MILES	5 MILES
2025 Households	3,744	28,237	57,557
2030 Households	4,052	30,001	62,724
% Change	8.23%	6.25%	8.98%

# Busy Bees

2720 W. Baseline Road, Laveen Village, AZ 85339

*Exclusively Offered by Education Properties Group:*

## Milo Spector

Executive Managing Partner, Co-Founder

(510) 461-4505

milo@ecadvs.com

Lic: CA 01959211

## Remmington Penn

Associate Director

(702) 469-1474

remmington@ecadvs.com

Lic: CA 02220211

## Scott Reid

ParaSell, Inc. | Broker of Record

scott@parasellinc.com

(949) 942-6585

AZ LIC #BR707387000

In Association with Scott Reid & ParaSell, Inc.

A Licensed Arizona Broker #C0709902000

Notice to AZ Residents and Property Owners: Consistent with state of AZ regulations, please direct all inquiries to AZ Broker.



## CONFIDENTIALITY and DISCLAIMER

The information contained in the following offering memorandum is proprietary and strictly confidential. It is intended to be reviewed only by the party receiving it from Essential Capital Advisors and ParaSell, Inc. and it should not be made available to any other person or entity without the written consent of Essential Capital Advisors and ParaSell, Inc.

By taking possession of and reviewing the information contained herein the recipient agrees to hold and treat all such information in the strictest confidence. The recipient further agrees that recipient will not photocopy or duplicate any part of the offering memorandum. If you have no interest in the subject property, please promptly return this offering memorandum to Essential Capital Advisors and ParaSell, Inc.. This offering memorandum has been prepared to provide summary, unverified financial and physical information to prospective purchasers, and to establish only a preliminary level of interest in the subject property.

The information contained herein is not a substitute for a thorough due diligence investigation. Essential Capital Advisors and ParaSell, Inc. has not made any investigation, and makes no warranty or representation with respect to the income or expenses for the subject property, the future projected financial performance of the property, the size and square footage of the property and improvements, the presence or absence of contaminating substances, PCBs or asbestos, the compliance with local, state and federal regulations, the physical condition of the improvements thereon, or financial condition or business prospects of any tenant, or any tenant's plans or intentions to continue its occupancy of the subject property.

The information contained in this offering memorandum has been obtained from sources we believe reliable; however, Essential Capital Advisors and ParaSell, Inc. has not verified, and will not verify, any of the information contained herein, nor has Essential Capital Advisors and ParaSell, Inc. conducted any investigation regarding these matters and makes no warranty or representation whatsoever regarding the accuracy or completeness of the information provided. All potential buyers must take appropriate measures to verify all of the information set forth herein. Prospective buyers shall be responsible for their costs and expenses of investigating the subject property.