

# 67 LEONARD STREET

BETWEEN BROADWAY & CHURCH STREET | TRIBECA



**ksr**  
**RETAIL SPACE**  
**FOR LEASE**



# 67 LEONARD STREET

BETWEEN BROADWAY & CHURCH STREET | TRIBECA

## PROPERTY HIGHLIGHTS

- Second generation fitness space
- Space features:  
1 ADA bathroom & shower room, 2 standard bathroom & shower rooms, elevators to all three floors, lockers in place
- Strong mix of TAMI office tenants and high-end residential in the immediate vicinity
- Neighbors include: *James Pearse, Tara Kitchen, Almine Rech Gallery, Billy's Bakery, Aire Ancient Baths, Tracy Anderson Method, Casa Carmen, Roxy Hotel, Two Hands Cafe, Ted Muehling, Galerie 56, Studio Twenty Seven*

**SIZE:** 463 SF Ground Floor  
1,904 SF Lower Level  
1,750 SF Sub Lower Level  
**4,117 SF Total**

**FRONTAGE:** 12'

**CEILING HEIGHT:** 16' Ground Floor  
10' 2" Lower Level  
7' Lower Level

**POSSESSION:** Immediate

**ASKING RENT:** Upon Request

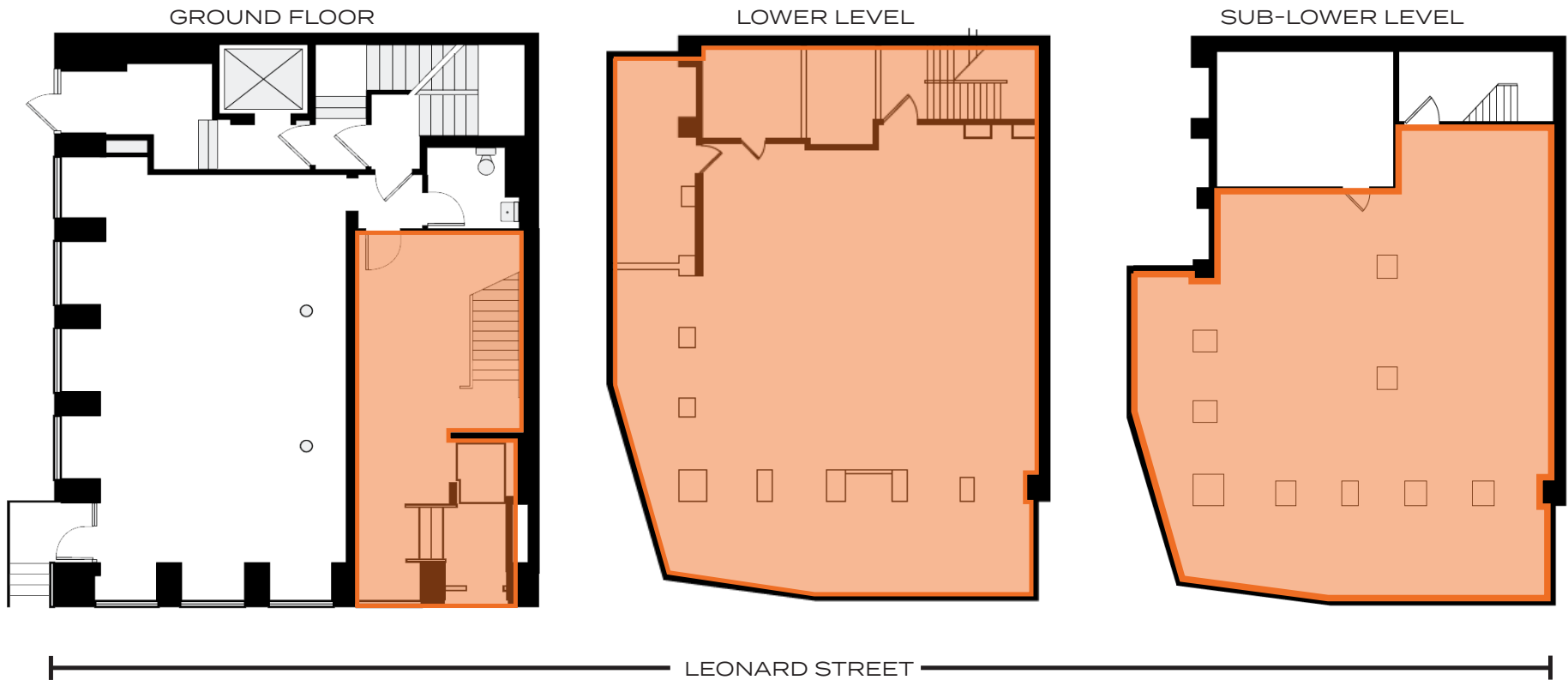
**TRANSPORTATION:** 1 6 J Z N Q R W



# 67 LEONARD STREET

BETWEEN BROADWAY & CHURCH STREET | TRIBECA

FLOOR PLANS:

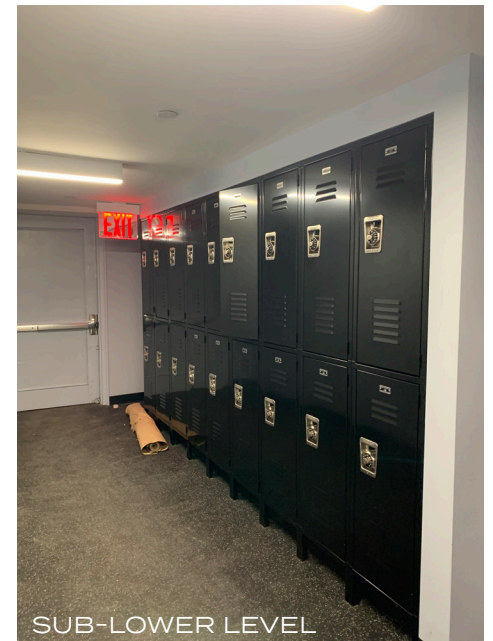




# 67 LEONARD STREET

BETWEEN BROADWAY & CHURCH STREET | TRIBECA

INTERIORS:



# 67 LEONARD STREET

BETWEEN BROADWAY & CHURCH STREET | TRIBECA

FOR MORE INFORMATION,  
PLEASE CONTACT:

**ISAAC COOPER**

786.510.2349 | [ICooper@ksrny.com](mailto:ICooper@ksrny.com)

**DARREN KASSIN**

917.684.7271 | [DKassin@ksrny.com](mailto:DKassin@ksrny.com)

**FREDDY SOUID**

917.968.0329 | [FSouid@ksrny.com](mailto:FSouid@ksrny.com)

**JACK HAMADANI**

718.415.0095 | [JHamadani@ksrny.com](mailto:JHamadani@ksrny.com)

