

10113 – 10115 MARINE CITY HWY.
IRA TWP., MICHIGAN

INDUSTRIAL FOR LEASE
1,860 - 4,770 Square Feet Available



**SIGNATURE
ASSOCIATES**
KNOW SIGNATURE | KNOW RESULTS

ANDREWS CORPORATE PARK



PROPERTY FEATURES

- 1,860 - 4,770 square feet available
- Office space to suit
- 18' clear height
- (1) 12' x 14' grade level door
- Well-maintained multi-tenant complex
- Zoned I-2, heavy industrial
- 1/3 an acre of outside storage available
- Lease Rate: \$9.95/sq. ft. MG



For more information, please contact:

PAUL SAAD
(248) 359 0652
psaad@signatureassociates.com

BEN WILKIEMEYER
(248) 359 0624
bwilkiemeyer@signatureassociates.com

SIGNATURE ASSOCIATES
One Towne Square, Suite 1200
Southfield, MI 48076
www.signatureassociates.com

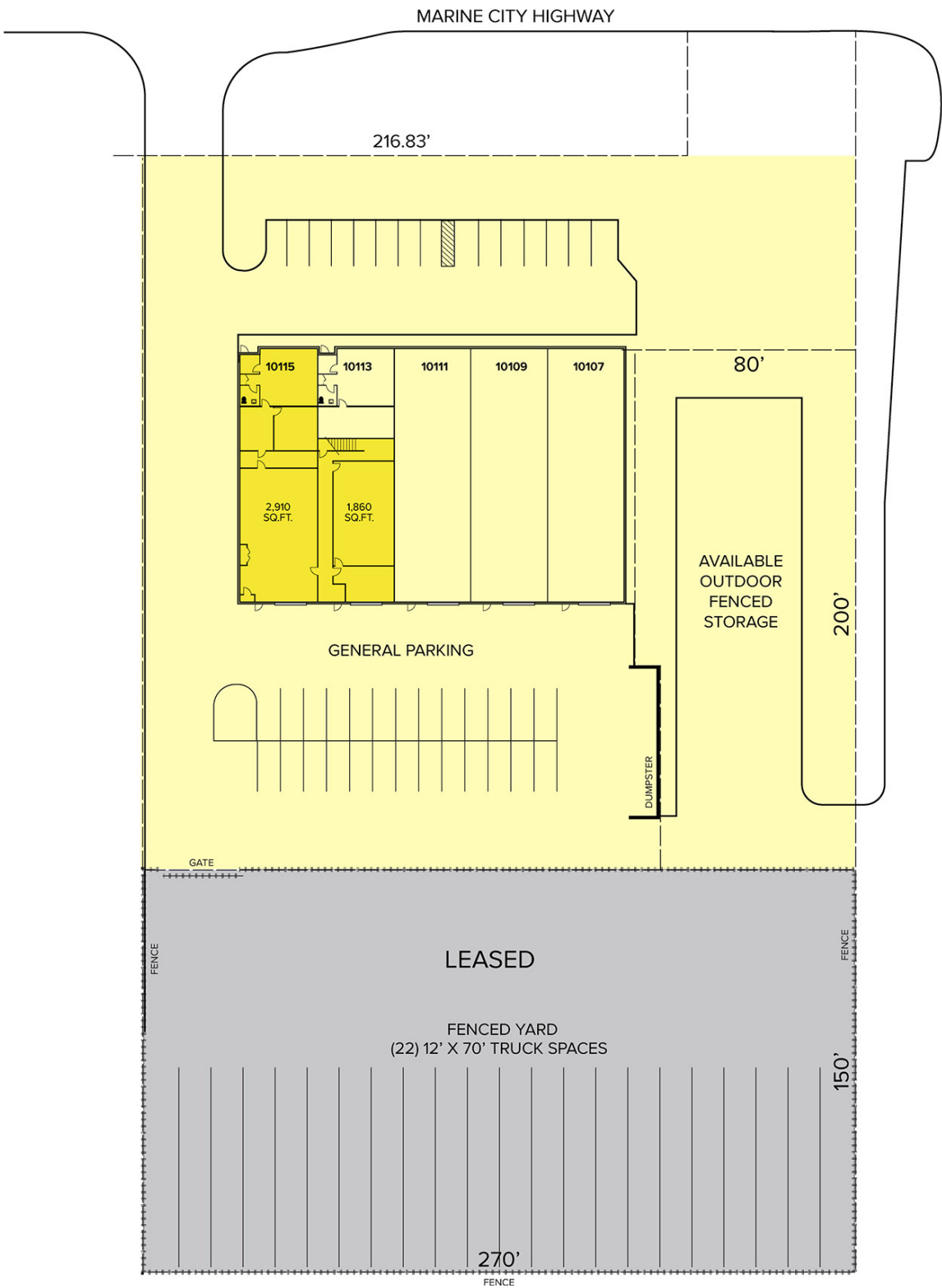
Information is subject to verification and no liability for errors or omissions is assumed. Price is subject to change and listing withdrawal.

10113-10115 Marine City Highway – Ira Twp., Michigan

Industrial For Lease

1,860 – 4,770
Square Feet
AVAILABLE

Site Plan



For more information, please contact:

PAUL SAAD
(248) 359 0652
psaad@signatureassociates.com

BEN WILKIEMEYER
(248) 359 0624
bwilkiemeyer@signatureassociates.com

SIGNATURE ASSOCIATES
One Towne Square, Suite 1200
Southfield, MI 48076
www.signatureassociates.com

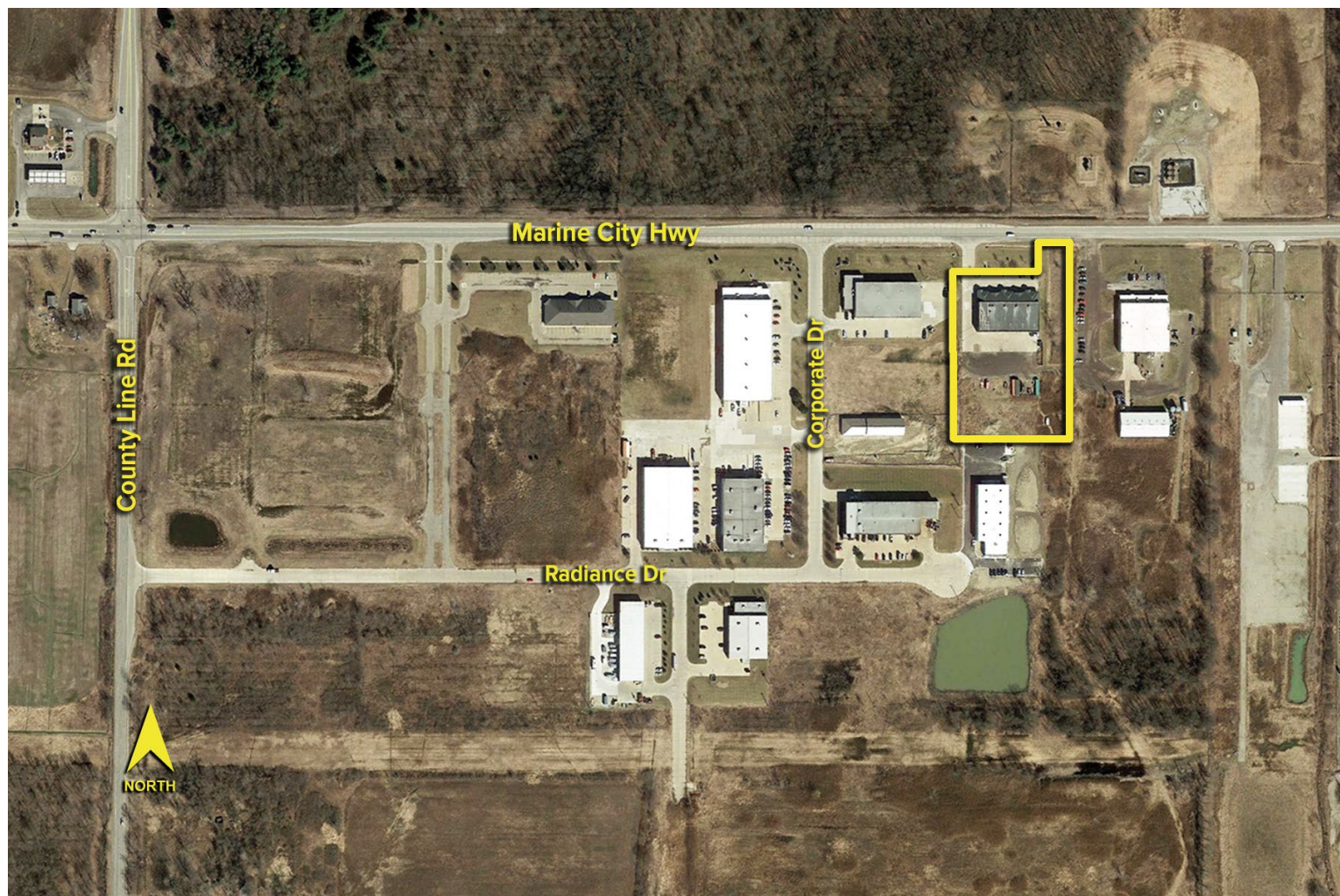
Information is subject to verification and no liability for errors or omissions is assumed. Price is subject to change and listing withdrawal.

10113-10115 Marine City Highway – Ira Twp., Michigan

Industrial For Lease

1,860 – 4,770
Square Feet
AVAILABLE

Aerial



For more information, please contact:

PAUL SAAD

(248) 359 0652

psaad@signatureassociates.com

BEN WILKIEMEYER

(248) 359 0624

bwilkiemeyer@signatureassociates.com

SIGNATURE ASSOCIATES

One Towne Square, Suite 1200

Southfield, MI 48076

www.signatureassociates.com

Information is subject to verification and no liability for errors or omissions is assumed. Price is subject to change and listing withdrawal.