



## WinGIS Geodetic Control Network Reference Tie Form

**Subdivision: Plat 1 of Steven`s Ridge**

Township: Owen

Municipality: Rockford

### WinGIS Monument

Monument Used: WIN 12.3N-04.0E (55)

N: 2063857.677 ft.

Date Accessed: 4/24/2007

E: 2585672.55 ft.

Elev: 772.53 ft.

### Survey Method: Differential GPS

GPS Receiver: Topcon Hyper

Satellites Acquired: 12

Accuracy: C-1

### New Corners Set

Corner Description: Southwest corner of Plat 1 of Steven`s Ridge

N: 2065361.72 ft.

Monument Type: 3/4

E: 2586794.08 ft.

Elev: 777.75 ft.

Corner Description: Northeast corner of Plat 1 of Steven`s Ridge

N: 2066017.79 ft.

Monument Type: 3/4

E: 2588330.9 ft.

Elev: 776.13 ft.

### Surveyor Information

Surveyor: Ron Larson

Phone: 815-484-4300

FAX: 815-484-4303

E-mail:

***I hereby certify that I, or an individual under my direct supervision, have gathered said information in the field and submitted as complete and accurate.***

Illinois Professional Land Surveyor Signature

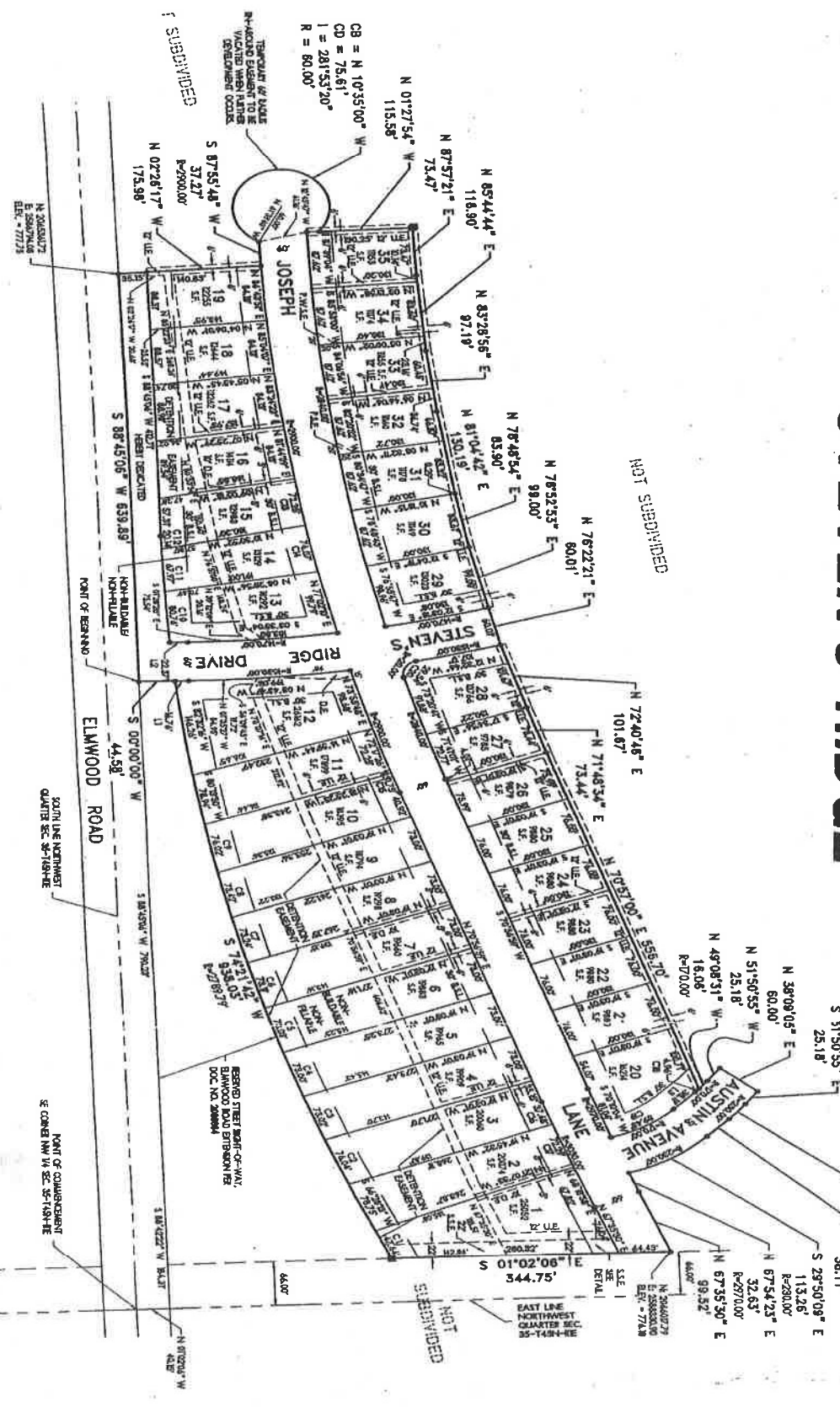
35-3113  
Number

10/28/2008  
Date

Date Received: 9/23/08	Date Checked: 10/28/08
Approved: <input checked="" type="checkbox"/> N Initials: RL	
<input type="button" value="Close"/>	<input type="button" value="Print"/>

Reference Tie ID: 262

# PLAT 1 OF STEVEN'S RIDGE



NOT SUBDIVIDED

NOT SUBDIVIDED

TEMPORARY USE SUBJECT TO BE VACATED WHEN ORDER BY SUBDIVISION

POINT OF BEGINNING

SOUTH LINE NORTHWEST QUARTER SEC. 34-18W-1E

POINT OF COMMENCEMENT

S. CORNER NW 1/4 SEC. 34-18W-1E

NON-ADJUTABLE

ELMWOOD ROAD

RIDGE DRIVER

RESERVED TRUST RIGHT OF WAY, ELMWOOD ROAD SUBDIVISION, DOC. NO. 28888

REMARKS

BY 7773

CB = N 10°35'00" W  
CD = 75.61'  
I = 281°53'20"  
R = 80.00'

S 47°58'09" E  
31.12'  
R=200.00'

S 4°09'22" E  
38.11'

S 29°50'09" E  
113.26'  
R=200.00'

N 67°54'23" E  
32.63'  
R=277.00'

N 67°35'30" E  
99.52'  
R=460.00'

N 51°50'55" E  
25.18'

N 39°08'05" E  
60.00'

N 49°08'31" W  
25.18'

N 51°50'55" W  
18.06'  
R=170.00'

N 72°40'48" E  
101.67'

N 71°48'34" E  
73.44'

N 102°37'00" E  
555.10'

N 76°22'21" E  
80.01'

N 78°48'54" E  
83.90'

N 78°52'53" E  
98.00'

N 81°04'42" E  
83.90'

N 83°28'56" E  
97.19'

N 85°44'44" E  
116.90'

N 87°57'21" E  
73.47'

N 01°27'54" W  
115.58'

N 87°00" W  
115.58'

S 87°55'48" W  
37.27'  
R=290.00'

N 02°28'17" W  
175.98'

S 88°45'06" W  
639.89'

S 88°45'06" W  
639.89'

S 00°00'00" W  
44.58'

S 00°00'00" W  
44.58'

S 1°24'14.05" W  
934.07'

N 72°40'48" E  
101.67'

01°02'06" W  
344.75'

# PLAT 1 OF STEVENS RIDGE

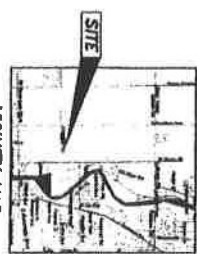
BEING A SUBDIVISION OF PART OF THE NORTHWEST QUARTER OF SECTION 35, TOWNSHIP 45 NORTH, RANGE 11 EAST OF THE THIRD PRINCIPAL MERIDIAN, WINNEBAGO COUNTY, ILLINOIS



- NOTES:
1. CONVEYANCE TO BE MADE BY DEED.
  2. THIS PLAN IS SUBJECT TO THE RECORDS OF THE COUNTY CLERK OF WINNEBAGO COUNTY, ILLINOIS.
  3. THIS PLAN IS SUBJECT TO THE RECORDS OF THE COUNTY CLERK OF WINNEBAGO COUNTY, ILLINOIS.

TABLE 1

LOT NO.	AREA (SQ. FT.)	AREA (SQ. YD.)
1	10,000	0.23
2	10,000	0.23
3	10,000	0.23
4	10,000	0.23
5	10,000	0.23
6	10,000	0.23
7	10,000	0.23
8	10,000	0.23
9	10,000	0.23
10	10,000	0.23
11	10,000	0.23
12	10,000	0.23
13	10,000	0.23
14	10,000	0.23
15	10,000	0.23
16	10,000	0.23
17	10,000	0.23
18	10,000	0.23
19	10,000	0.23
20	10,000	0.23
21	10,000	0.23
22	10,000	0.23
23	10,000	0.23
24	10,000	0.23
25	10,000	0.23
26	10,000	0.23
27	10,000	0.23
28	10,000	0.23
29	10,000	0.23
30	10,000	0.23
31	10,000	0.23
32	10,000	0.23
33	10,000	0.23
34	10,000	0.23
35	10,000	0.23
36	10,000	0.23
37	10,000	0.23
38	10,000	0.23
39	10,000	0.23
40	10,000	0.23
41	10,000	0.23
42	10,000	0.23
43	10,000	0.23
44	10,000	0.23
45	10,000	0.23
46	10,000	0.23
47	10,000	0.23
48	10,000	0.23
49	10,000	0.23
50	10,000	0.23
51	10,000	0.23
52	10,000	0.23
53	10,000	0.23
54	10,000	0.23
55	10,000	0.23
56	10,000	0.23
57	10,000	0.23
58	10,000	0.23
59	10,000	0.23
60	10,000	0.23
61	10,000	0.23
62	10,000	0.23
63	10,000	0.23
64	10,000	0.23
65	10,000	0.23
66	10,000	0.23
67	10,000	0.23
68	10,000	0.23
69	10,000	0.23
70	10,000	0.23
71	10,000	0.23
72	10,000	0.23
73	10,000	0.23
74	10,000	0.23
75	10,000	0.23
76	10,000	0.23
77	10,000	0.23
78	10,000	0.23
79	10,000	0.23
80	10,000	0.23
81	10,000	0.23
82	10,000	0.23
83	10,000	0.23
84	10,000	0.23
85	10,000	0.23
86	10,000	0.23
87	10,000	0.23
88	10,000	0.23
89	10,000	0.23
90	10,000	0.23
91	10,000	0.23
92	10,000	0.23
93	10,000	0.23
94	10,000	0.23
95	10,000	0.23
96	10,000	0.23
97	10,000	0.23
98	10,000	0.23
99	10,000	0.23
100	10,000	0.23



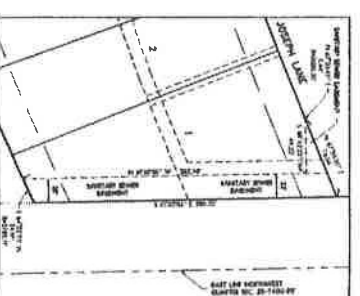
OWNER:  
STEVENS RIDGE, LLC  
1000 STEVENS RIDGE, ILLINOIS 60089

**ARC**  
DESIGN  
RESOURCES  
INC.

1000 STEVENS RIDGE, ILLINOIS 60089  
TEL: 630-261-1111  
WWW.ARCDESIGNRESOURCES.COM

**LEGEND**

1	SET CONCRETE FOUNDATION
2	FOOTING
3	CONCRETE SLAB
4	CONCRETE DRIVE
5	CONCRETE DRIVE
6	CONCRETE DRIVE
7	CONCRETE DRIVE
8	CONCRETE DRIVE
9	CONCRETE DRIVE
10	CONCRETE DRIVE
11	CONCRETE DRIVE
12	CONCRETE DRIVE
13	CONCRETE DRIVE
14	CONCRETE DRIVE
15	CONCRETE DRIVE
16	CONCRETE DRIVE
17	CONCRETE DRIVE
18	CONCRETE DRIVE
19	CONCRETE DRIVE
20	CONCRETE DRIVE
21	CONCRETE DRIVE
22	CONCRETE DRIVE
23	CONCRETE DRIVE
24	CONCRETE DRIVE
25	CONCRETE DRIVE
26	CONCRETE DRIVE
27	CONCRETE DRIVE
28	CONCRETE DRIVE
29	CONCRETE DRIVE
30	CONCRETE DRIVE
31	CONCRETE DRIVE
32	CONCRETE DRIVE
33	CONCRETE DRIVE
34	CONCRETE DRIVE
35	CONCRETE DRIVE
36	CONCRETE DRIVE
37	CONCRETE DRIVE
38	CONCRETE DRIVE
39	CONCRETE DRIVE
40	CONCRETE DRIVE
41	CONCRETE DRIVE
42	CONCRETE DRIVE
43	CONCRETE DRIVE
44	CONCRETE DRIVE
45	CONCRETE DRIVE
46	CONCRETE DRIVE
47	CONCRETE DRIVE
48	CONCRETE DRIVE
49	CONCRETE DRIVE
50	CONCRETE DRIVE
51	CONCRETE DRIVE
52	CONCRETE DRIVE
53	CONCRETE DRIVE
54	CONCRETE DRIVE
55	CONCRETE DRIVE
56	CONCRETE DRIVE
57	CONCRETE DRIVE
58	CONCRETE DRIVE
59	CONCRETE DRIVE
60	CONCRETE DRIVE
61	CONCRETE DRIVE
62	CONCRETE DRIVE
63	CONCRETE DRIVE
64	CONCRETE DRIVE
65	CONCRETE DRIVE
66	CONCRETE DRIVE
67	CONCRETE DRIVE
68	CONCRETE DRIVE
69	CONCRETE DRIVE
70	CONCRETE DRIVE
71	CONCRETE DRIVE
72	CONCRETE DRIVE
73	CONCRETE DRIVE
74	CONCRETE DRIVE
75	CONCRETE DRIVE
76	CONCRETE DRIVE
77	CONCRETE DRIVE
78	CONCRETE DRIVE
79	CONCRETE DRIVE
80	CONCRETE DRIVE
81	CONCRETE DRIVE
82	CONCRETE DRIVE
83	CONCRETE DRIVE
84	CONCRETE DRIVE
85	CONCRETE DRIVE
86	CONCRETE DRIVE
87	CONCRETE DRIVE
88	CONCRETE DRIVE
89	CONCRETE DRIVE
90	CONCRETE DRIVE
91	CONCRETE DRIVE
92	CONCRETE DRIVE
93	CONCRETE DRIVE
94	CONCRETE DRIVE
95	CONCRETE DRIVE
96	CONCRETE DRIVE
97	CONCRETE DRIVE
98	CONCRETE DRIVE
99	CONCRETE DRIVE
100	CONCRETE DRIVE



DATE: 11-21-08  
SCALE: 1" = 30'  
SHEET 1 OF 2

# PLAT 1 OF STEVEN'S RIDGE

BENIG A SUBDIVISION OF PART OF THE NORTHWEST QUARTER OF SECTION 35, TOWNSHIP 45 NORTH, RANGE 1 EAST OF THE THIRD PRINCIPAL MERIDIAN, WINNEBAGO COUNTY, ILLINOIS

### OWNER CERTIFICATION

STATE OF ILLINOIS )  
COUNTY OF WINNEBAGO ) ss. I, \_\_\_\_\_, Clerk of said County, do hereby certify that the above described plat is a true and correct copy of the original as filed in my office on this \_\_\_\_\_ day of \_\_\_\_\_, 2008.

STATE OF ILLINOIS )  
COUNTY OF WINNEBAGO ) ss. I, \_\_\_\_\_, Clerk of said County, do hereby certify that the above described plat is a true and correct copy of the original as filed in my office on this \_\_\_\_\_ day of \_\_\_\_\_, 2008.

### NOTARY PUBLIC CERTIFICATION

STATE OF ILLINOIS )  
COUNTY OF WINNEBAGO ) ss. I, \_\_\_\_\_, Notary Public, do hereby certify that the above described plat is a true and correct copy of the original as filed in my office on this \_\_\_\_\_ day of \_\_\_\_\_, 2008.

### CITY LEGAL DIRECTOR CERTIFICATION

CITY OF WINNEBAGO )  
I, \_\_\_\_\_, Legal Director for the City of Winnebago, do hereby certify that the above described plat is a true and correct copy of the original as filed in my office on this \_\_\_\_\_ day of \_\_\_\_\_, 2008.

### CITY PLAT OFFICE CERTIFICATION

CITY OF WINNEBAGO )  
I, \_\_\_\_\_, City Plat Officer, do hereby certify that the above described plat is a true and correct copy of the original as filed in my office on this \_\_\_\_\_ day of \_\_\_\_\_, 2008.

### CITY ENGINEER CERTIFICATION

CITY OF WINNEBAGO )  
I, \_\_\_\_\_, City Engineer, do hereby certify that the above described plat is a true and correct copy of the original as filed in my office on this \_\_\_\_\_ day of \_\_\_\_\_, 2008.



APR DESIGN RESOURCES INC. CIVIL ENGINEERING 201 S. WASHINGTON ST. WINNEBAGO, IL 61093-1000

### CERTIFICATION BY THE WINNEBAGO COUNTY ENGINEER

STATE OF ILLINOIS )  
COUNTY OF WINNEBAGO ) ss. I, \_\_\_\_\_, County Engineer, do hereby certify that the above described plat is a true and correct copy of the original as filed in my office on this \_\_\_\_\_ day of \_\_\_\_\_, 2008.

### COUNTY CLERK CERTIFICATION

STATE OF ILLINOIS )  
COUNTY OF WINNEBAGO ) ss. I, \_\_\_\_\_, County Clerk, do hereby certify that the above described plat is a true and correct copy of the original as filed in my office on this \_\_\_\_\_ day of \_\_\_\_\_, 2008.

### COUNTY RECORDER CERTIFICATION

STATE OF ILLINOIS )  
COUNTY OF WINNEBAGO ) ss. I, \_\_\_\_\_, County Recorder, do hereby certify that the above described plat is a true and correct copy of the original as filed in my office on this \_\_\_\_\_ day of \_\_\_\_\_, 2008.

### LABORER PROVISION

I, \_\_\_\_\_, do hereby certify that the above described plat is a true and correct copy of the original as filed in my office on this \_\_\_\_\_ day of \_\_\_\_\_, 2008.

Dated this 24th day of June, 2008.

