



IMMACULATE, MODERN, ALL-NEW OFFICE & LAB SPACES

NOW LEASING



2680 Zanker Rd.
San Jose, CA



Wet Lab suites range from 4,521
to 4,382 SF individual lab



Includes central DI water & vacuum, fume
hoods, emergency showers and eye
washing stations, HazMat storage cabinets,
and 1,000 KW emergency power



Includes on-site support
& best practices

bioCube Amenities

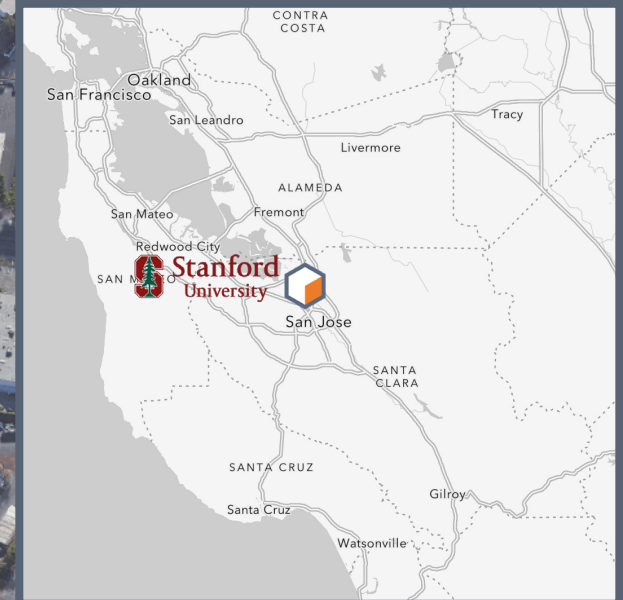
- Quick access to Highways 101 and 880
- Easy access to Light Rail, Caltrain and Ace Train Stations
- Minutes away from major amenities including restaurants, retail, and hotels

NOW LEASING

[Inquire Here](#)



NEW
2680 Zanker Rd.
36,106 RSF
For Lease





BioSqaure Amenities

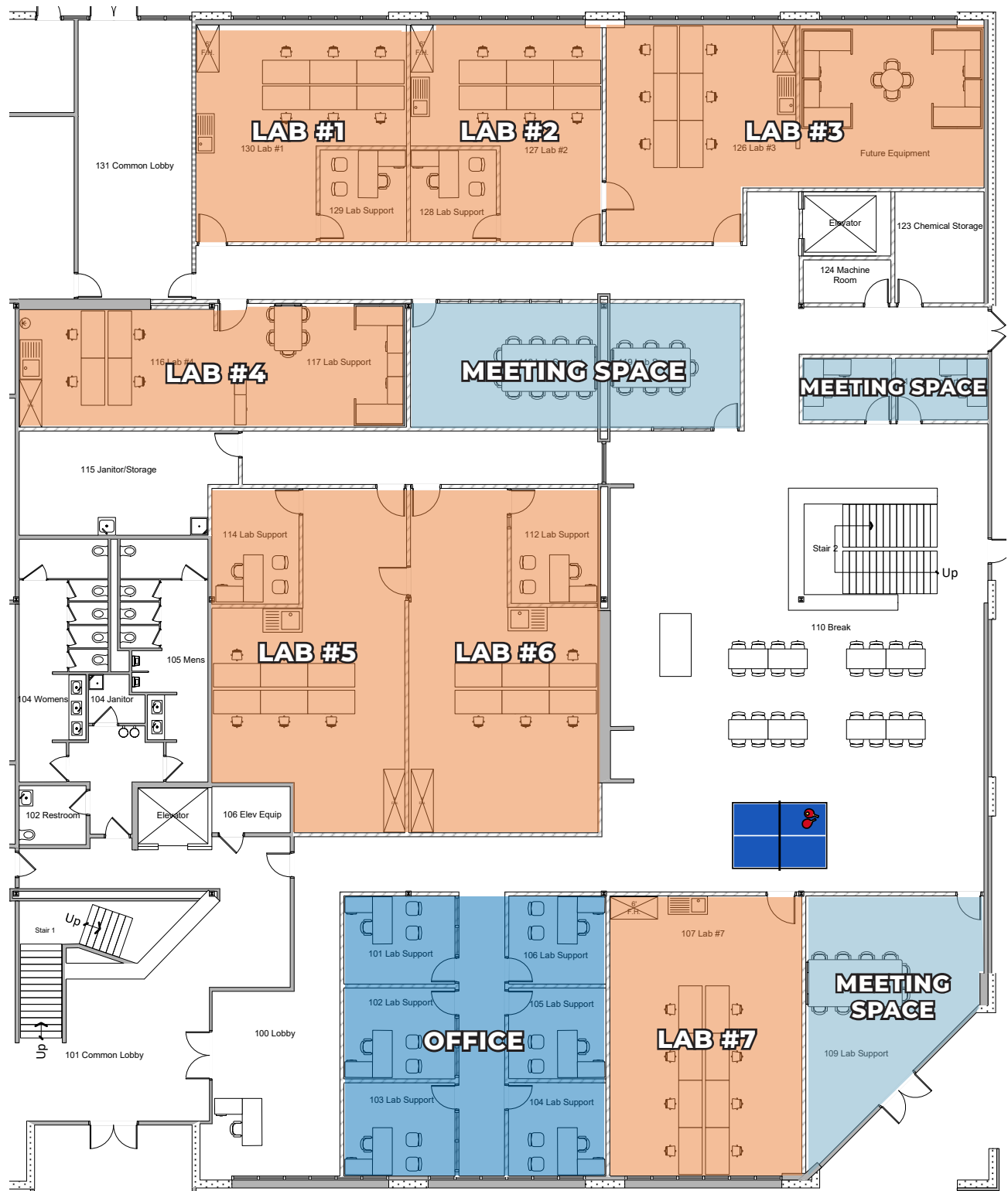
- New cafe
- New on-site gym
- New indoor/outdoor community space
- EV Parking



2680 Zanker Rd.
San Jose, CA

 ACCESS VIRTUAL TOUR HERE

FIRST FLOOR PLAN



2680 Zanker Rd.
San Jose, CA

 ACCESS VIRTUAL TOUR HERE

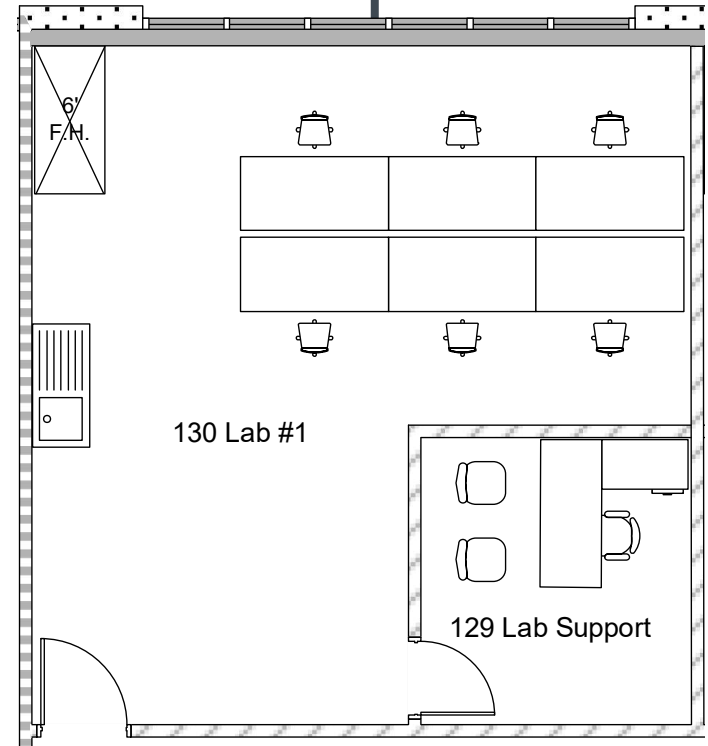
SECOND FLOOR PLAN





2680 Zanker Rd.
San Jose, CA

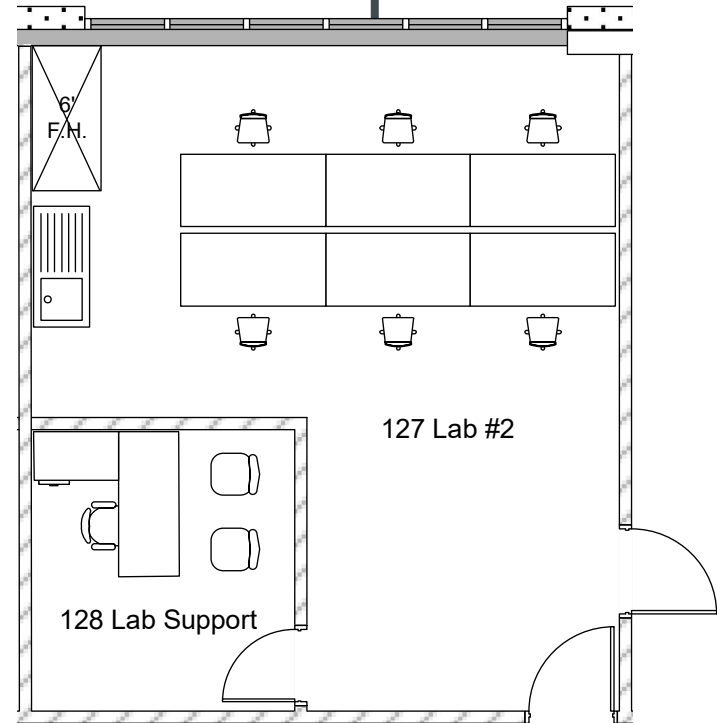
LAB SPACE #1



2680 Zanker Rd.
San Jose, CA



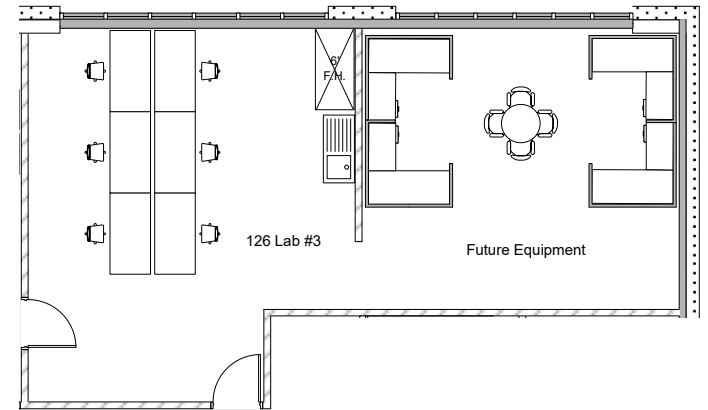
LAB SPACE #2



2680 Zanker Rd.
San Jose, CA



LAB SPACE #3



2680 Zanker Rd.
San Jose, CA



LAB SPACE #4





2680 Zanker Rd.
San Jose, CA

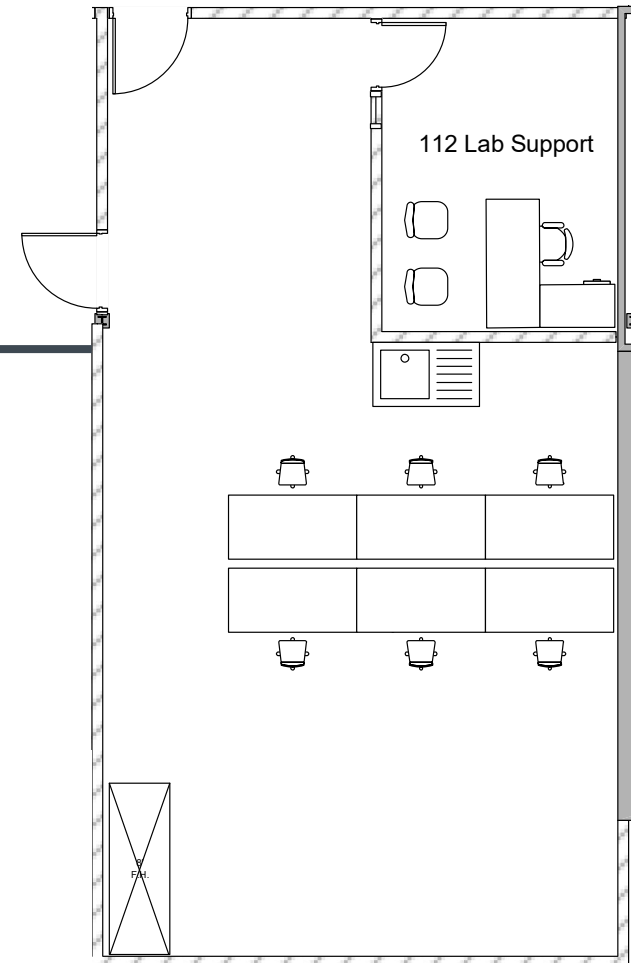
LAB SPACE #5



2680 Zanker Rd.
San Jose, CA



LAB SPACE #6





2680 Zanker Rd.
San Jose, CA

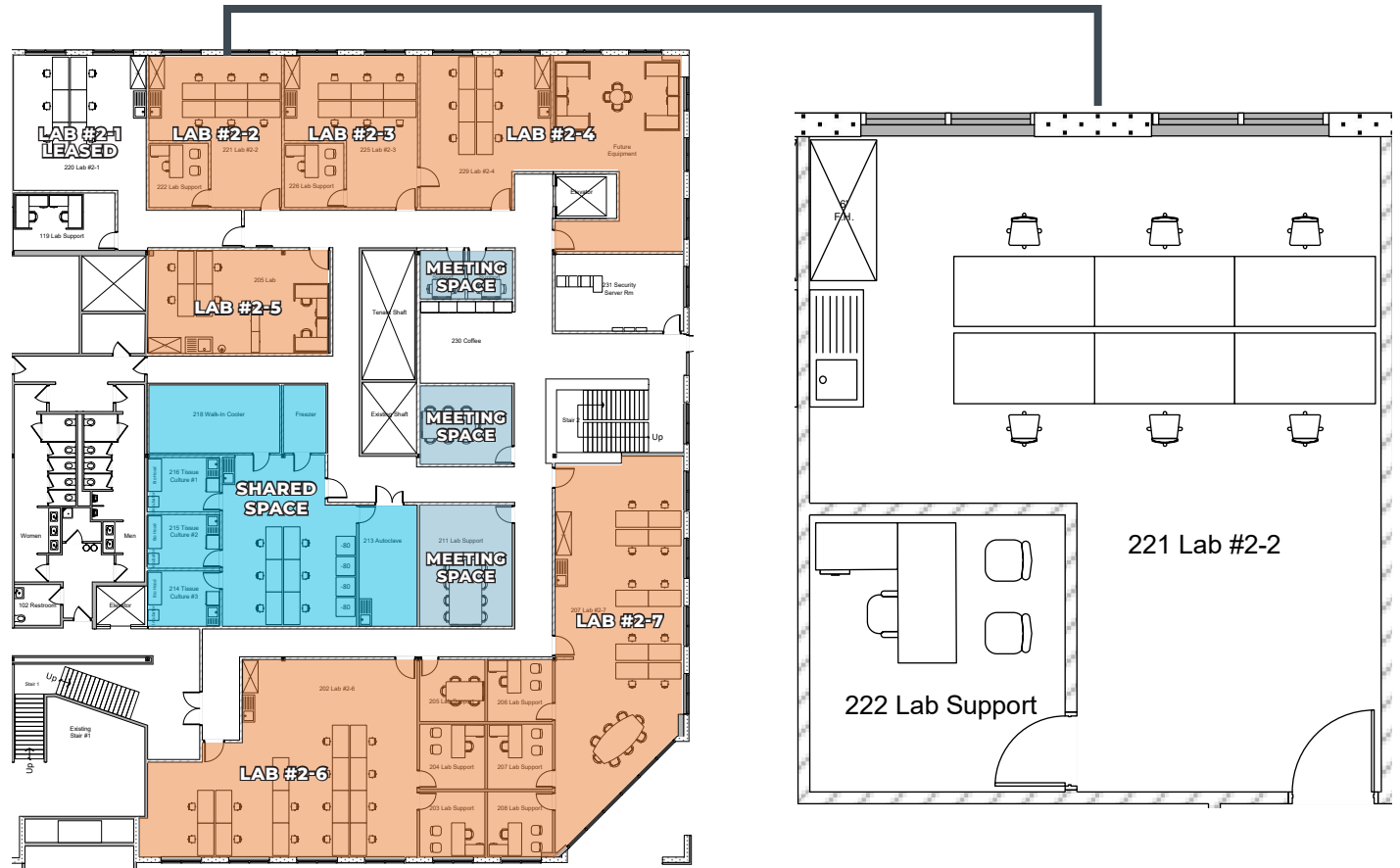
LAB SPACE #7





2680 Zanker Rd.
San Jose, CA

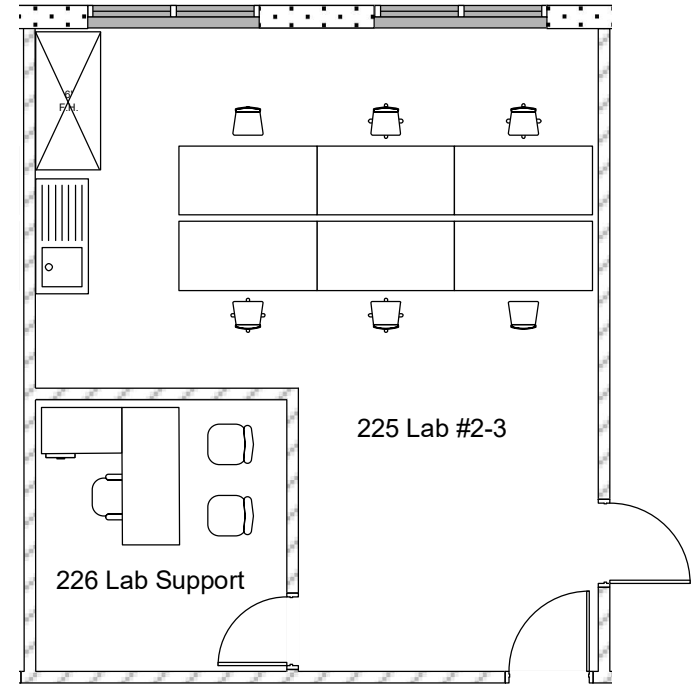
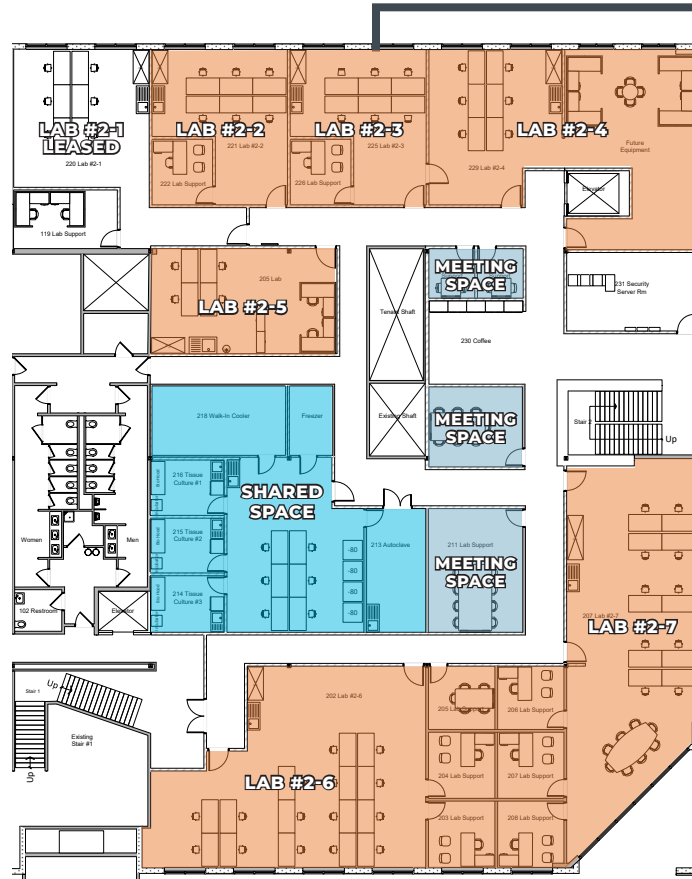
LAB SPACE #2-2



2680 Zanker Rd.
San Jose, CA



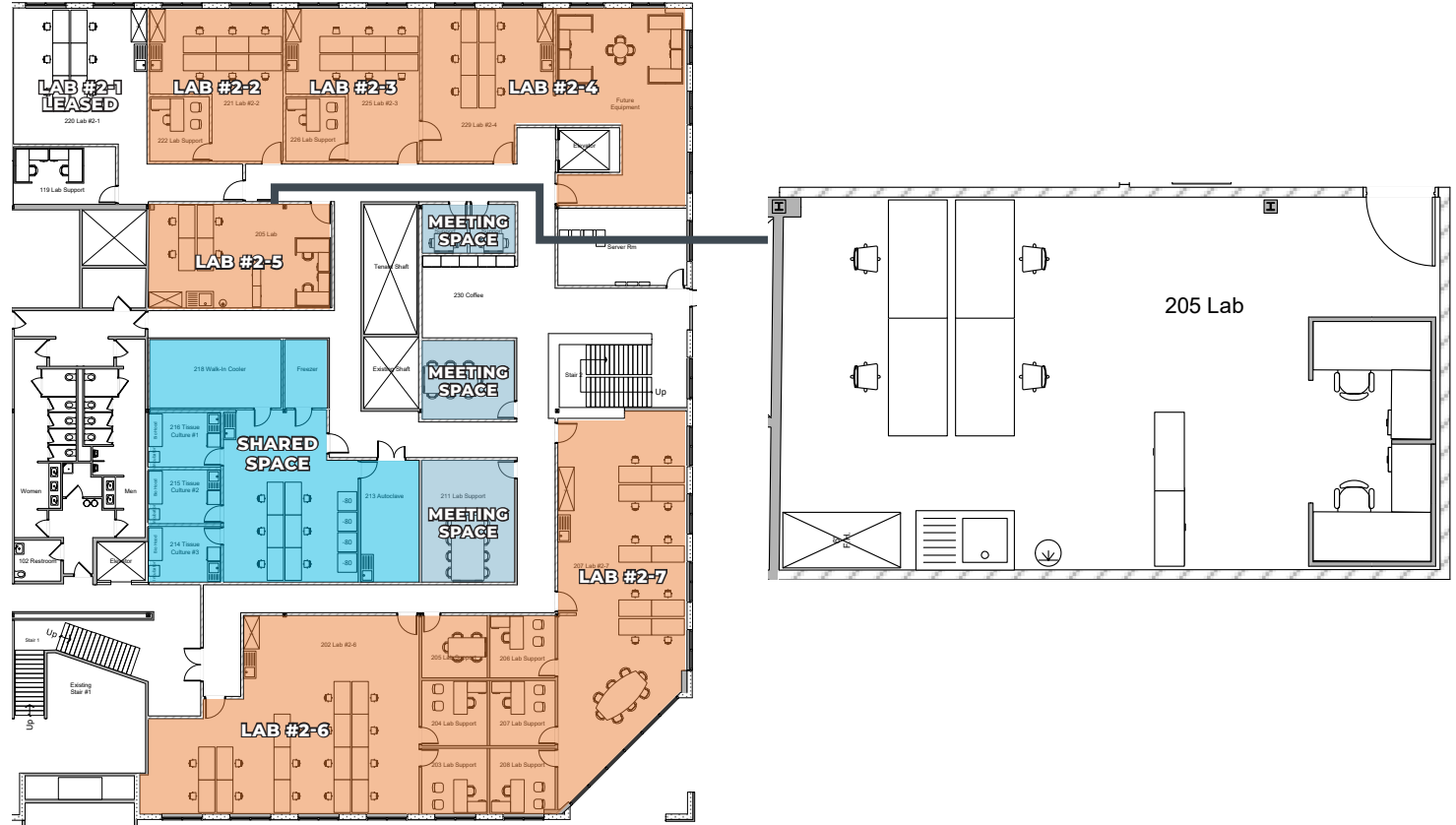
LAB SPACE #2-3



2680 Zanker Rd.
San Jose, CA



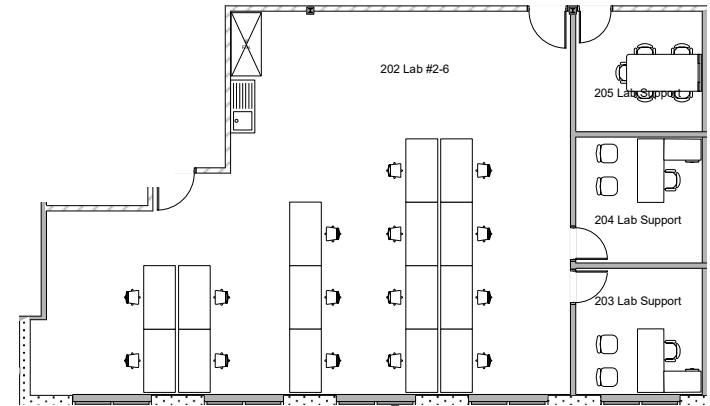
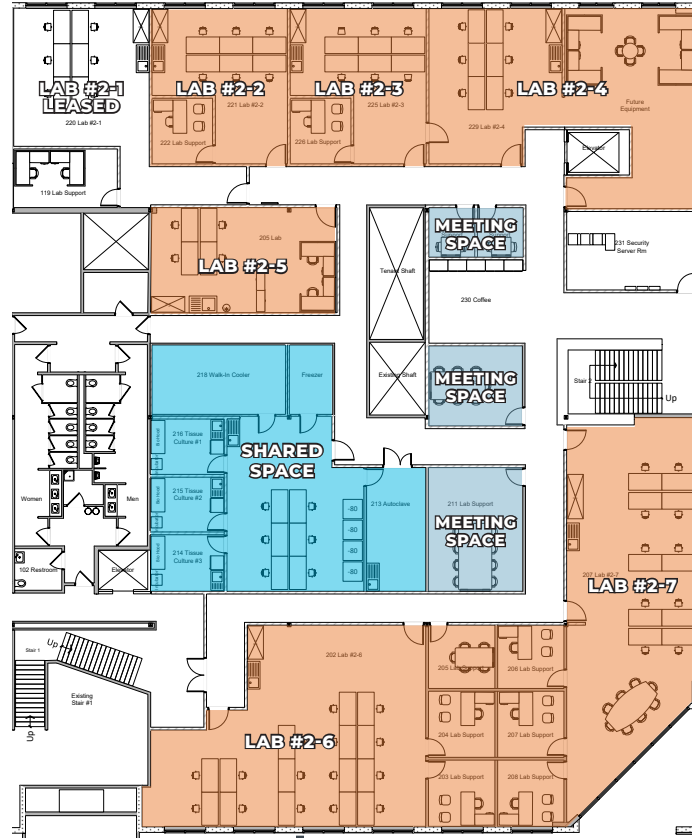
LAB SPACE #2-5



2680 Zanker Rd.
San Jose, CA



LAB SPACE #2-6



2680 Zanker Rd.
San Jose, CA



LAB SPACE #2-7





WELCOME TO A NEW HAVEN FOR INSPIRATION

NOW LEASING



TRANSWESTERN

REAL ESTATE
SERVICES

CONTACTS

PETER CONTE

CA DRE # 01840209

415.489.1844

peter.conte@transwestern.com

ANDREW WHEELER

CA DRE # 02048909

415.489.1831

andrew.wheeler@transwestern.com

