

Medical Office for Lease

equity | brokerage

**773 North Main Street
Clayton, GA 30525**



**7,265
SQUARE
FEET**

\$20 PSF

**20,200 ADT
on Hwy 441**

Property Highlights

- Free standing building with 4,244 SF available now and remaining 3,016 SF available May 2026
- Surrounded by serene landscaping
- Less than 1 mile from HWY 441
- Within a mile of Mountain Lakes Medical Center
- 4.5/1,000 parking ratio

TODD SEAMAN

tseaman@equity.net

404-446-8458

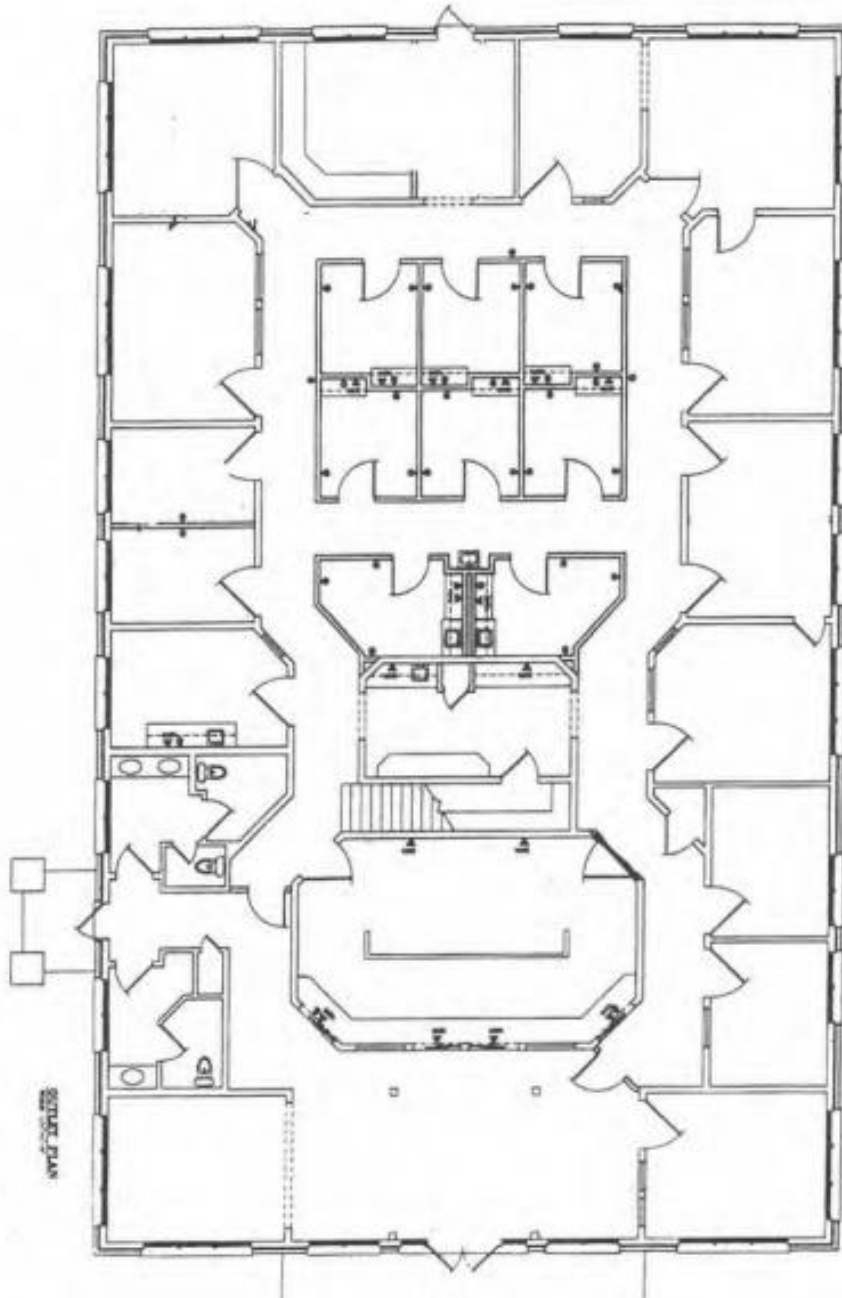
GET IN TOUCH
www.equity.net

Medical Office for Lease

equity | brokerage

**773 North Main Street
Clayton, GA 30525**

BUILDING FLOOR PLAN



GET IN TOUCH
www.equity.net

TODD SEAMAN
tseaman@equity.net
404-446-8458

Medical Office for Lease

equity | **brokerage**

**773 North Main Street
Clayton, GA 30525**

Key Facts

773 N Main St, Clayton, Georgia, 30525
Ring of 5 miles

KEY FACTS

10,245

Population



Average Household Size

48.3

Median Age

\$65,311

Median Household Income

BUSINESS



518

Total Businesses



5,155

Total Employees

INCOME



\$65,311

Median Household Income



\$43,618

Per Capita Income



\$261,580

Median Net Worth

EDUCATION

10.1%

No High School Diploma



34.2%

High School Graduate



27.5%

Some College/
Associate's Degree



28.1%

Bachelor's/Grad/
Prof Degree

EMPLOYMENT



White Collar

53.6%



Blue Collar

28.1%



Services

18.3%



3.1%

Unemployment Rate

2024 Households by income (Esri)

The largest group: \$50,000 - \$74,999 (19.6%)

The smallest group: \$150,000 - \$199,999 (6.6%)

Indicator ▲	Value	Diff	
<\$15,000	9.2%	-1.2%	
\$15,000 - \$24,999	7.6%	+0.7%	
\$25,000 - \$34,999	10.7%	+0.3%	
\$35,000 - \$49,999	8.7%	-0.2%	
\$50,000 - \$74,999	19.6%	+1.7%	
\$75,000 - \$99,999	15.6%	-0.9%	
\$100,000 - \$149,999	10.5%	-1.8%	
\$150,000 - \$199,999	6.6%	-0.1%	
\$200,000+	11.5%	+1.5%	

Bars show deviation from

Rabun County ▼

Source: This infographic contains data provided by Esri (2024, 2029), Esri-Data Axle (2024). © 2025 Esri

GET IN TOUCH
www.equity.net

TODD SEAMAN
tseaman@equity.net
404-446-8458