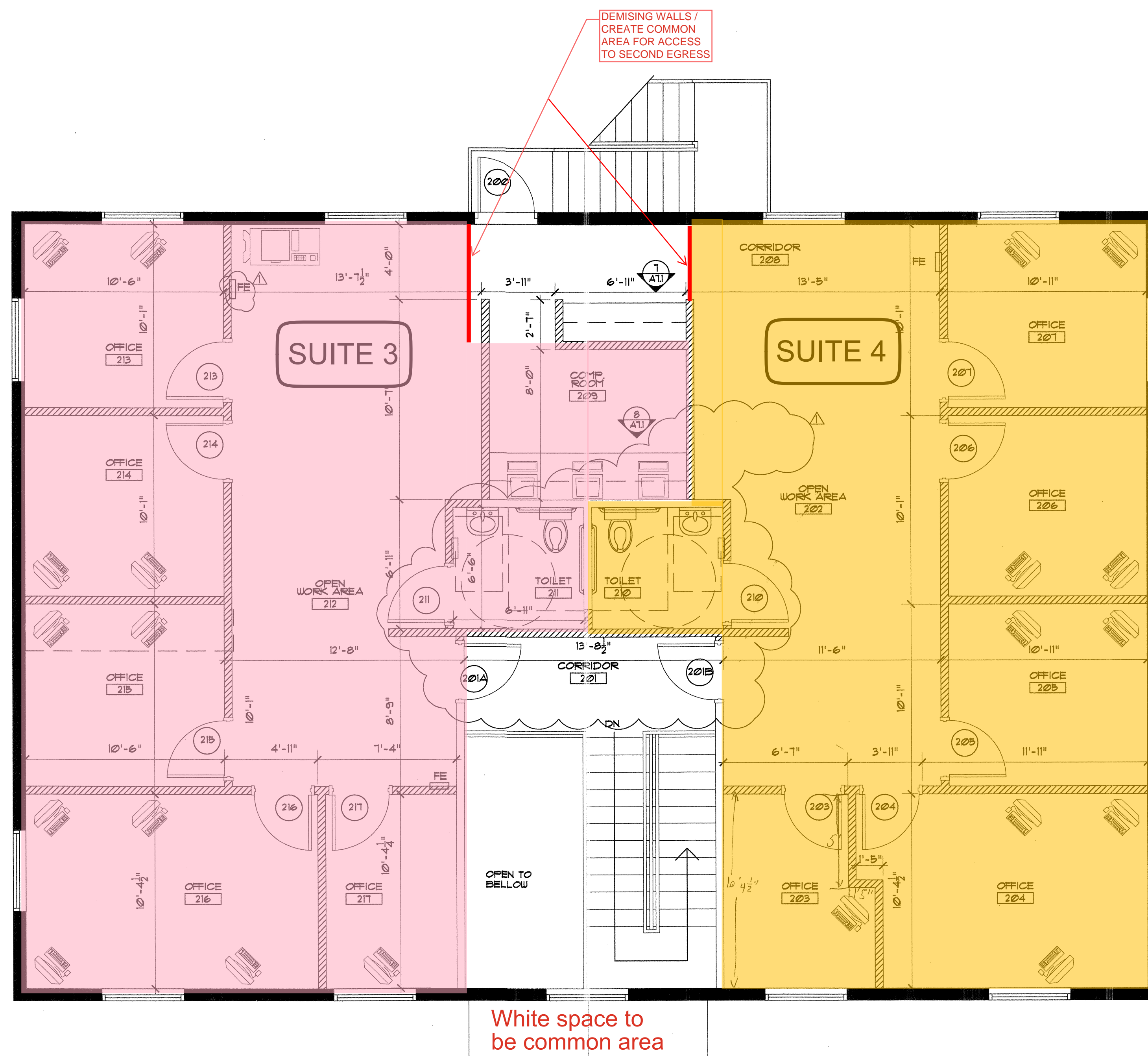


Notes:

Revisions:
11/26/06 BLDG. DEPT. COMMENTS

Seal:

Consultants:



LEGEND

- EXTERIOR WALLS TO REMAIN
- EXISTING CONSTRUCTION TO REMAIN
- NEW 3 5/8" or 6" METAL STUDS @ 16" O.C. WITH 5/8" G.W.B. BOTH SIDES. (EXTEND 10" ABOVE ACOUSTICAL TILE CEILING.
- FE FIRE EXTINGUISHER

NOTES:
1. PROVIDE 1/8" METAL FURRING, 3/4" RIGID INSULATION AND 5/8" G.W.B. FROM FLOOR TO UNDERSIDE OF ROOF DECK AT EXISTING EXTERIOR WALLS, WHERE REQUIRED.

DIMENSIONS:

INDICATES DIMENSION TO FACE OF EXISTING OR NEW CONSTRUCTION

NOTES:
1. VERIFY ALL EXISTING DIMENSIONS IN FIELD
2. CONTRACTOR SHALL VERIFY OR PROVIDE A MAX. 1/2" FLOOR SURFACE ELEVATION DEVIATION BETWEEN BOTH SIDES OF ENT. / EXIT DOORS.

WILLIAM THOMAS FAST License #AR0015934

ELEMENTS
ARCHITECTS - INTERIOR DESIGNERS

Tampa Office
The Edgewater Building
600 South Magnolia Avenue
Suite 150
Tampa, Florida 33606
Phone (813) 251-0565
Fax (813) 251-0567

Miami Office
1699 Coral Way suite 503
Miami, Florida 33145
Phone (305) 858-5858
Fax (305) 858-5850

ELEMENTS State License #AA0002341

*2nd Floor could remain as one unit also

Belleair 2nd Floor

SECOND FLOOR PLAN
SCALE: 1/4" = 1'-0"

COLDWELL BANKER-BELLEAIR NORTH
575 INDIAN ROCKS ROAD
BELLEAIR, FL.
Drawing No./Date 08-28-06

A-3.2

06-050
Drawing Title/Scale/Drawn by MD
SECOND FLOOR PLAN
SCALE: AS NOTED