



562 OMNI INDUSTRIAL BOULEVARD, SUMMERVILLE, SC 29483



FOR LEASE

365,509 SF AVAILABLE



ROCKPOINT

LEE ALLEN

Vice Chairman
843 805 5111
lee.allen@jll.com

KEVIN COATS

Senior Managing Director
843 805 5112
kevin.coats@jll.com

TYLER SMITH

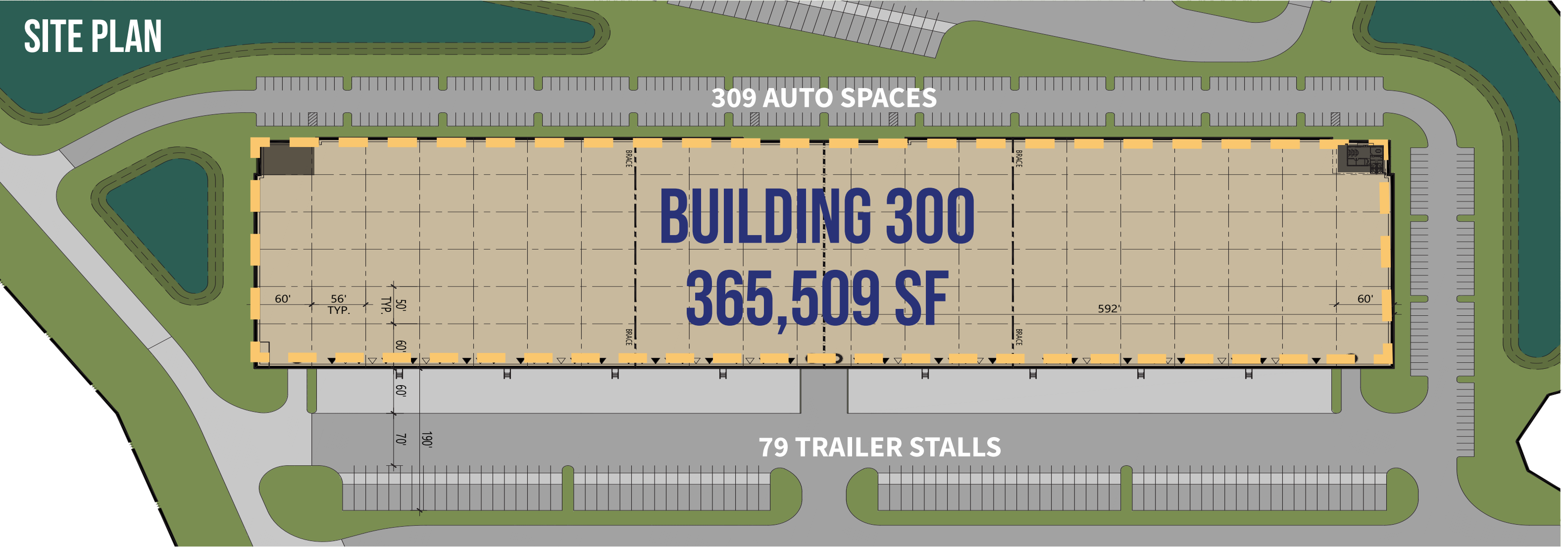
Senior Associate
843 805 5118
tyler.smith@jll.com

BUILDING 3 SPECIFICATIONS

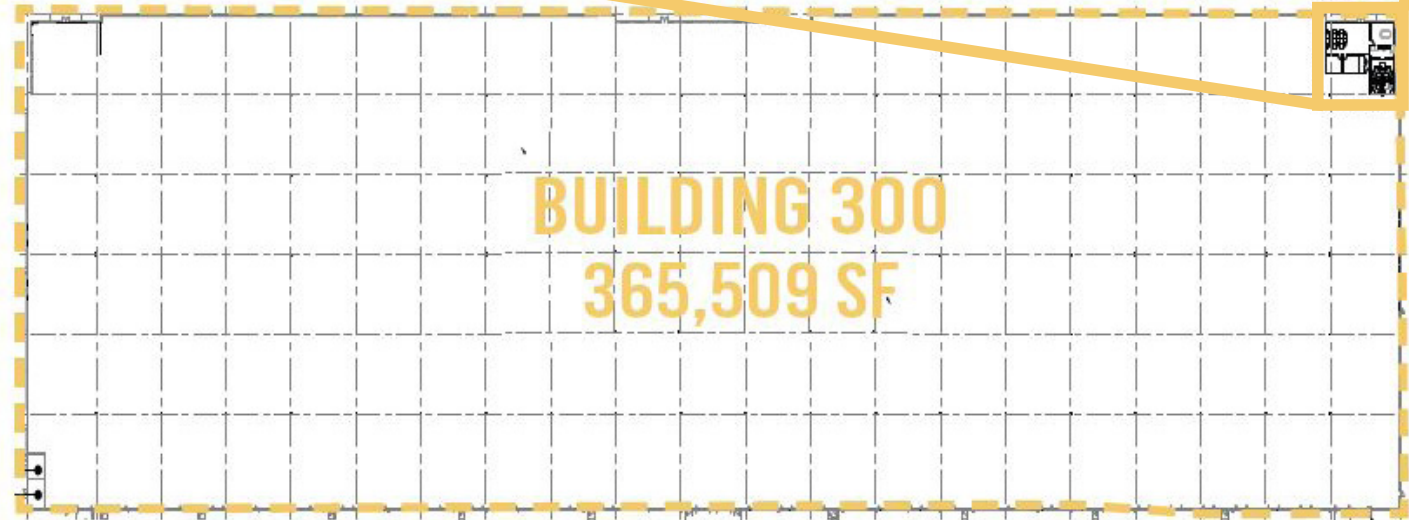
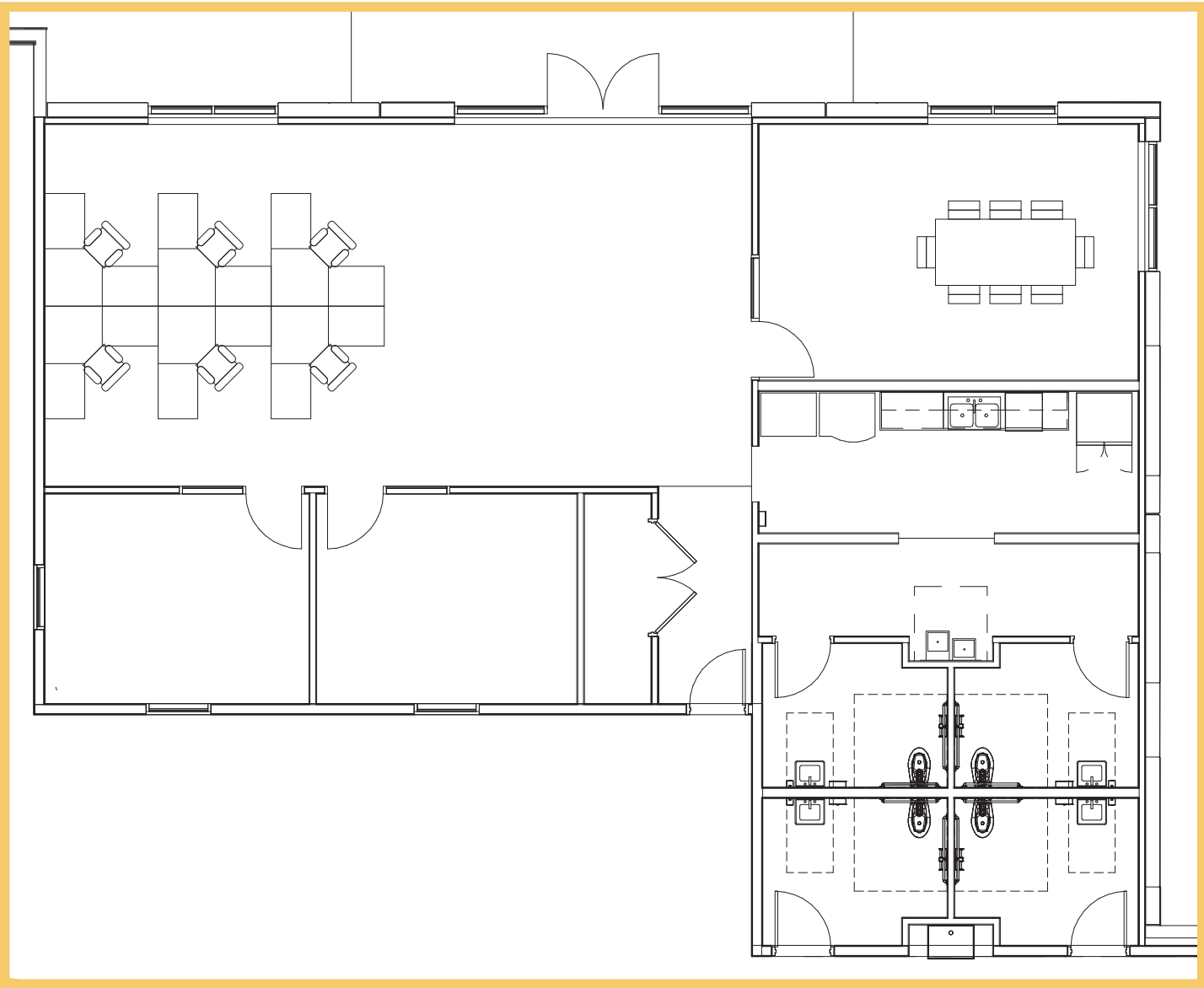
BUILDING SIZE (SF)	365,509
OFFICE SF	2,201 SF
STRUCTURE	Tilt-Up Concrete
DIMENSIONS	310' x 1184'
CONFIGURATION	Rear Load
CLEAR HEIGHT	36'
COLUMN SPACING	56' x 50'
FLOOR SLAB	7"

LOADING DOCKS	62 Loading Docks, 4 Drive-In Docks
TRUCK COURT	190'
ROOF	45 mil TPO, R-20, with 15-year warranty
FIRE PROTECTION	ESFR
POWER	2,000 amp at 277/480
LIGHTING	LED with motion sensor
AUTO PARKING	309 Spaces
TRAILER PARKING	79 Stalls

SITE PLAN



SPEC OFFICE | 2,201 SF





BERKELEY COUNTY SC



WANDO WELCH TERMINAL

NORTH CHARLESTON TERMINAL

CHARLESTON
INTERNATIONAL AIRPORT

EXIT 197
NEXTON PARKWAY



EXIT 194
JEDBURG ROAD



WALMART
DISTRIBUTION CENTER

VOLVO CAR USA
MANUFACTURING FACILITY

REDWOOD MATERIALS
BATTERY MANUFACTURING

72%

of incoming labor pool have
higher education

69%

incoming labor pool within the
ages of 18-44

42%

have a bachelor's degree or
higher

30%

have a same college or
associate's degree

OMNI INCENTIVES



15%

TAXES REDUCED UNTIL 2032



YOUR ECONOMIC ADVANTAGE

FILOT IN PLACE	YES
FILOT TERM	2042
SPECIAL SOURCE REVENUE CREDIT	YES
ASSESSMENT RATE	6%
SPECIAL SOURCE REVENUE CREDIT PERCENTAGE	15%
SPECIAL SOURCE REVENUE CREDIT TERM	2032

RAPIDLY EXPANDING PORT OF CHARLESTON

- The port has experienced outstanding growth in total loaded TEUs over the past decade, most recently reporting record levels of cargo handled during fiscal year 2022 (2.85 million TEUs), as a result of key drivers such as Southeastern population growth, secular shift from West Coast to East Coast ports, and more recently shifts in manufacturing from China to other parts of Asia.
- Totalling nearly \$2.8 billion, the Port’s game-changing expansion program is well underway including the delivery of the new Leatherman Terminal (Mar-2021), a new access road connecting to I-26 and the new, dual-access intermodal terminal.
- Following its successful completion in December of 2022, the \$580 million Charleston Harbor Deepening Project increased the depth of the harbor to 52 feet, making it the deepest seaport harbor on the East Coast. 52’ depth ensures mega container ships can access terminals free from tidal restriction.
- \$500 million investment to further modernize the Wando Welch Terminal including three (3) more 155’ ship-to-shore cranes and 24 rubber-tired gantry cranes which enable the Port to handle three New-Panamax ships simultaneously.
- Charleston is the only Southeast Port of call for ships on the North Atlantic Express (AX1), which considerably expands the Port’s connectivity with Northern Europe.

\$63.4B

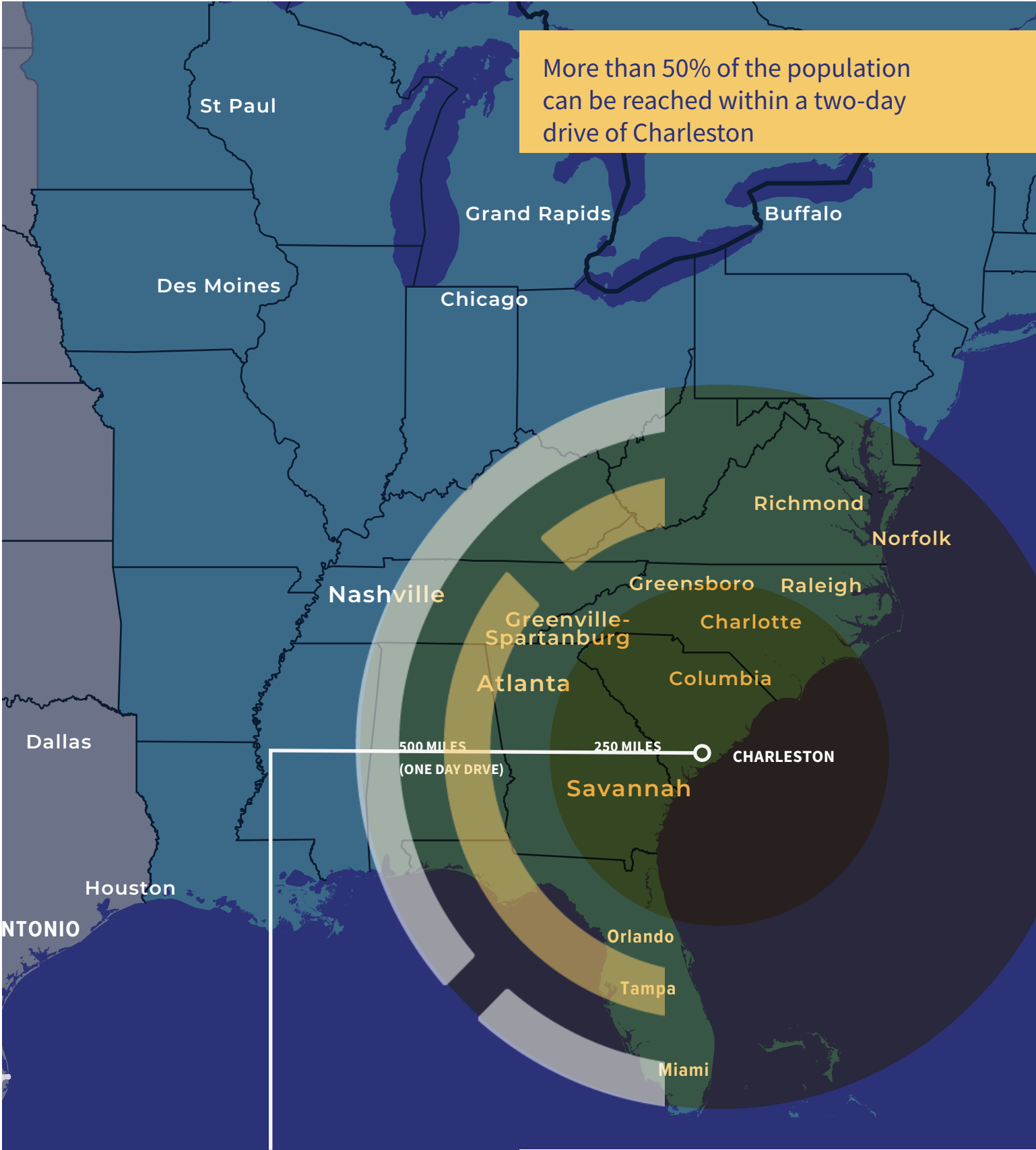
Statewide
economic impact

37

Crane moves per day
(most productive
in the U.S.)

100

Foreign ports
served directly



DISTANCE TO U.S. POPULATION (% OF POPULATION)	
500 MILES (1-DAY DRIVE)	69.8M (21%)
750 MILES (2-DAY DRIVE)	170.5M (51%)
1,000 MILES (3-DAY DRIVE)	235.2 (71%)



562 OMNI INDUSTRIAL BOULEVARD, SUMMERVILLE, SC 29483

BUILDING 300
365,509 SF

LEE ALLEN

Executive Managing Director
843 805 5111
lee.allen@jll.com

KEVIN COATS

Senior Managing Director
843 805 5112
kevin.coats@jll.com

TYLER SMITH

Vice President
843 805 5118
tyler.smith@jll.com

Although information has been obtained from sources deemed reliable, JLL does not make any guarantees, warranties or representations, express or implied, as to the completeness or accuracy as to the information contained herein. Any projections, opinions, assumptions or estimates used are for example only. There may be differences between projected and actual results, and those differences may be material. JLL does not accept any liability for any loss or damage suffered by any party resulting from reliance on this information. If the recipient of this information has signed a confidentiality agreement with JLL regarding this matter, this information is subject to the terms of that agreement. ©2025 Jones Lang LaSalle Brokerage, Inc. All rights reserved.



ROCKPOINT