

2800 MAIN STREET, GLASTONBURY, CT



FOR SALE OR LEASE: UP TO 4,517 SF

GREAT VISIBILITY FOR RESTAURANT, RETAIL, MEDICAL OR OFFICE!

- » Located at a traffic light on the corner of Main Street and Spring Street.
- » Plentiful parking with more parking proposed.
- » Existing structure with great visibility.

DEMOGRAPHICS

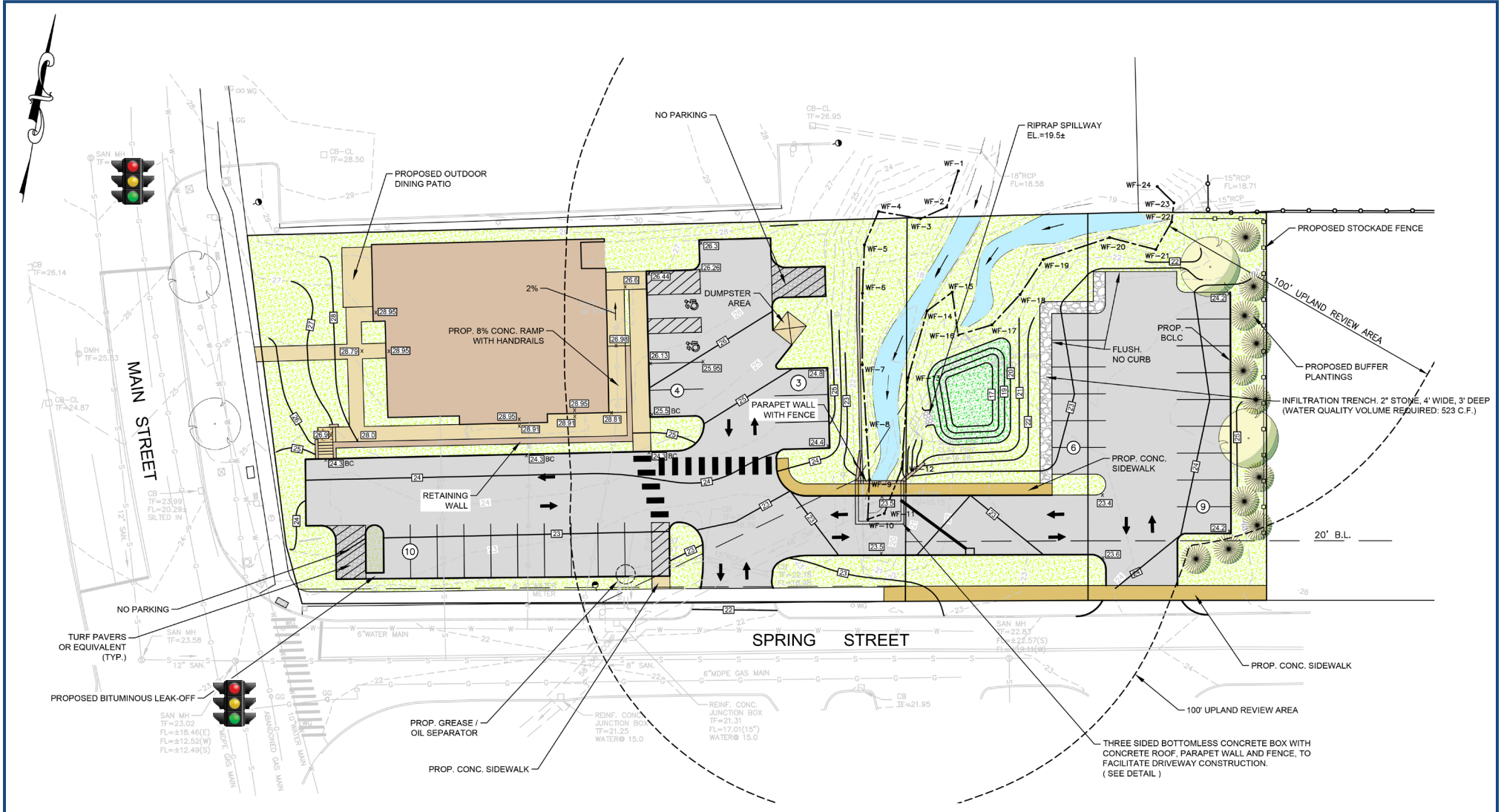
	1-Mile	3-Miles	5-Miles
Population	5,111	44,776	180,994
Number of Household	2,348	18,980	72,988
Avg. Household Income	\$123,411	\$133,198	\$108,183

A TRUE EXCLUSIVE...
**CALL FOR THE
DETAILS!**

AGENT:
TYLER LYMAN
203.529.4639
tl@truecre.com

This information provided in this marketing package has been obtained from sources believed reliable, but has not been verified for accuracy or completeness. You should conduct a careful, independent investigation of the property and verify all information. Any reliance on this information is solely at your own risk.







PROPOSED ELEVATIONS

PUTNAM BRIDGE PLAZA SHOPPING CENTER

SHOPS ON MAIN

GRISWOLD SHOPPING CENTER

THE SHOPS AT SOMERSET SQUARE

THE SHOPPES AT FOX RUN

SITE



2800 MAIN STREET, GLASTONBURY, CT

SHOPS ON MAIN

3

--	--	--

GRISWOLD ST

GLASTONBURY BLVD

GRISWOLD SHOPPING CENTER

--	--	--	--

MAIN ST

SPRING ST

THE SHOPS AT SOMERSET SQUARE

2

3