

PROPERTY FOR LEASE

14100 23 Mile
Shelby Township, MI 48315

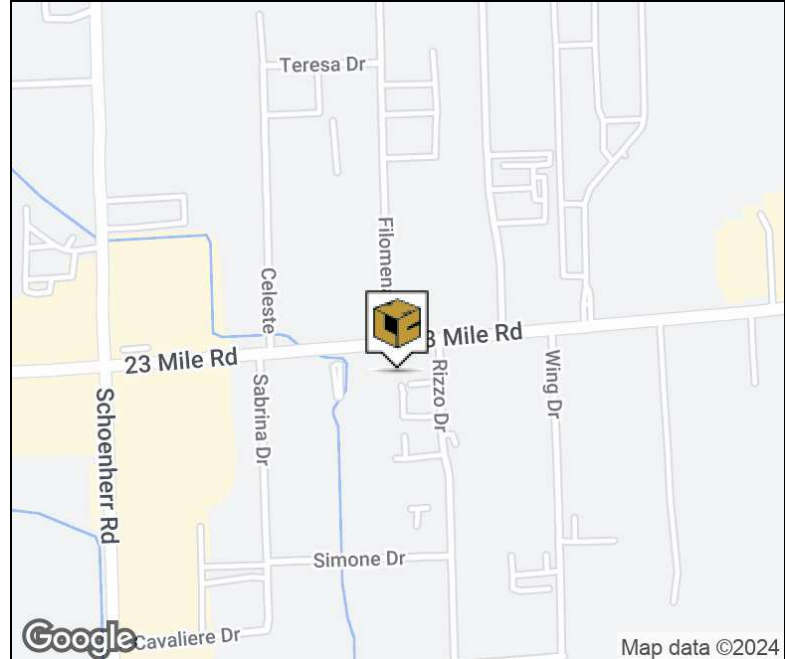


PROPERTY SUMMARY



Property Highlights

- 16,448 Square Feet For Lease
- 2,148 Square Feet of Office
- 480V Power
- 5,803 Square Feet of Additional Mezzanine Space in Warehouse
- Close Proximity to M-53



FOR MORE INFORMATION:

Jason Capitani, SIOR, CCIM
Managing Partner
248.637.7684
jcapitani@LMCap.com

Joe DePonio III, SIOR
Senior Vice President
248.637.3513
jdeponio@LMCap.com



CONNECT WITH US

248.637.9700 | www.LMCap.com

Information contained herein was obtained from sources deemed to be reliable but is not guaranteed. Subjects to prior sales, changes of price or withdrawal.

PROPERTY FOR LEASE

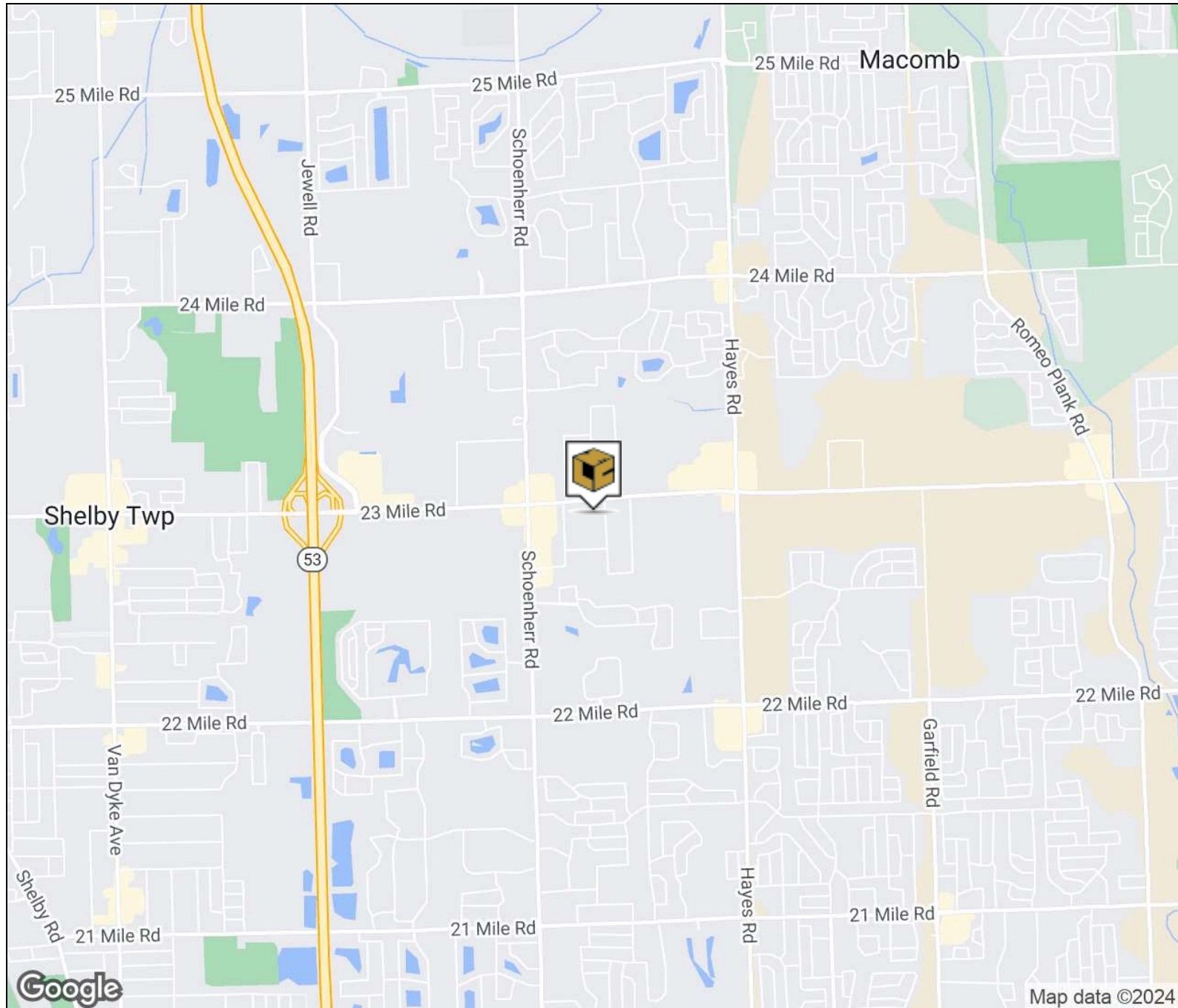
14100 23 Mile

Shelby Township, MI 48315



L. MASON CAPITANI
CORFAC INTERNATIONAL

LOCATION MAP



FOR MORE INFORMATION:

Jason Capitani, SIOR, CCIM
Managing Partner
248.637.7684
jcapitani@LMCap.com

Joe DePonio III, SIOR
Senior Vice President
248.637.3513
jdeponio@LMCap.com



CONNECT WITH US

248.637.9700 | www.LMCap.com

Information contained herein was obtained from sources deemed to be reliable but is not guaranteed. Subjects to prior sales, changes of price or withdrawal.

PROPERTY FOR LEASE

14100 23 Mile
Shelby Township, MI 48315



L. MASON CAPITANI
CORFAC INTERNATIONAL

INDUSTRIAL PROPERTY DETAILS

Lease Rate	\$8.95 SF/yr NNN
Taxes	\$1.02/SF

Location Information

Street Address	14100 23 Mile
City, State, Zip	Shelby Township, MI 48315
County	Macomb
Side of Street	South
Nearest Highway	M-53

Property Information

Property Type	Industrial
Zoning	LM
Property Subtype	Manufacturing
Lot Size	1.12 Acres
APN #	23-07-24-100-031
Lot Frontage	140 ft
Lot Depth	348 ft
Site Description	Located on the south side of 23 Mile Road, east of Schoenherr, minutes off M-53.

Building Information

Building Size	16,448 SF
Available SF	16,448 SF
Factory SF	14,300 SF
Office Space	2,148 SF
Year Built	1991
Year Last Renovated	-
Tenancy	Single
Number of Grade Level Doors	1
Overhead Door Size	12'x14'
Fire Suppression	-
Bay Size	50'
Ceiling Height	18'
Minimum Ceiling Height	18'
Column Space	40'
Mezzanine	5,803 SF
Power Description	240V/1,000 Amps
Rail Access	N/A
Number of Parking Spaces	30
Heating	Gas Forced Air
A/C	Office Only
Restrooms	4
Lighting	LED

FOR MORE INFORMATION:

Jason Capitani, SIOR, CCIM
Managing Partner
248.637.7684
jcapitani@LMCap.com

Joe DePonio III, SIOR
Senior Vice President
248.637.3513
jdeponio@LMCap.com



CONNECT WITH US

248.637.9700 | www.LMCap.com

Information contained herein was obtained from sources deemed to be reliable but is not guaranteed. Subjects to prior sales, changes of price or withdrawal.

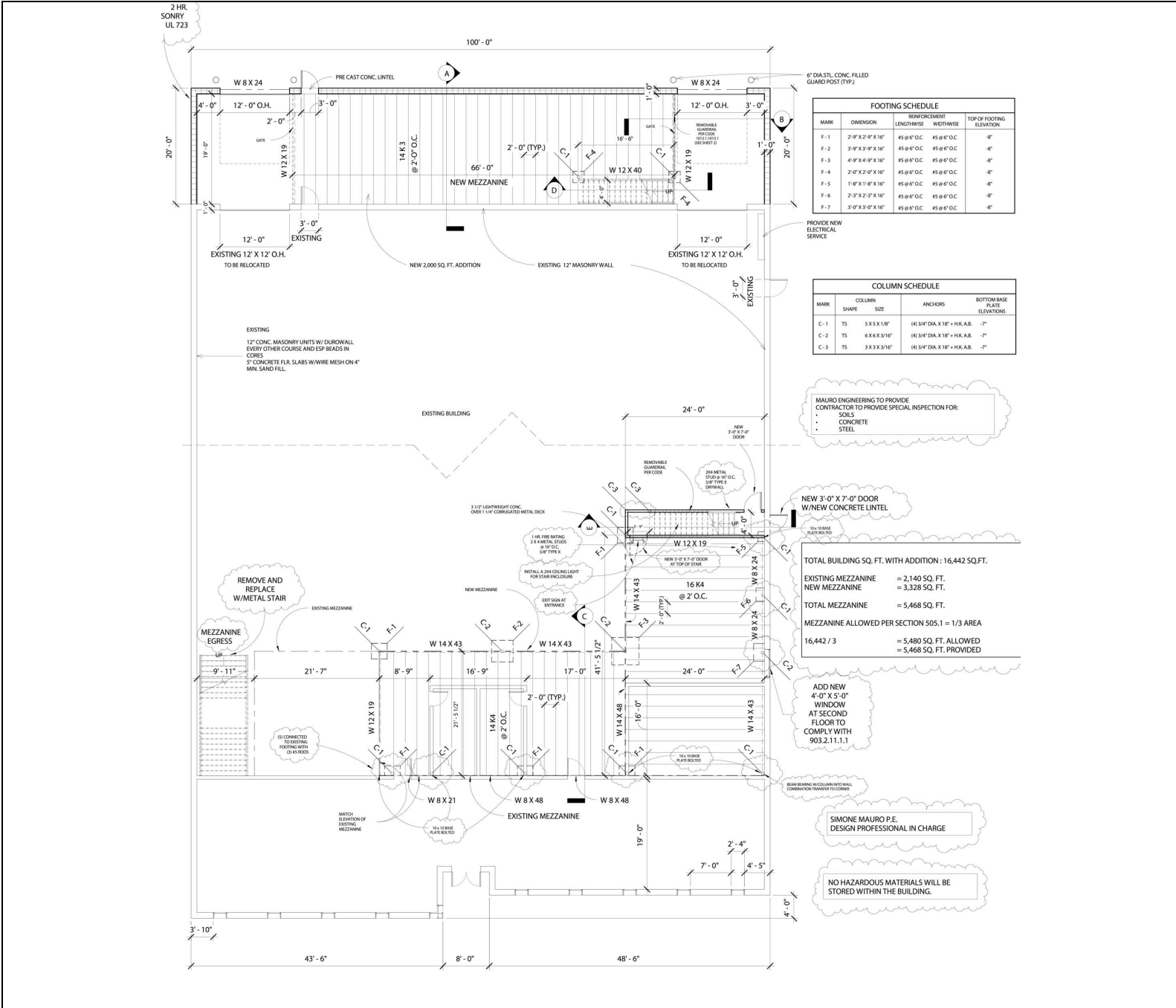
PROPERTY FOR LEASE

14100 23 Mile
Shelby Township, MI 48315



L. MASON CAPITANI
 CORFAC INTERNATIONAL

FLOOR PLAN



FOR MORE INFORMATION:

Jason Capitani, SIOR, CCIM
 Managing Partner
 248.637.7684
 jcapitani@LMCap.com

Joe DePonio III, SIOR
 Senior Vice President
 248.637.3513
 jdeponio@LMCap.com



CONNECT WITH US

248.637.9700 | www.LMCap.com

Information contained herein was obtained from sources deemed to be reliable but is not guaranteed. Subjects to prior sales, changes of price or withdrawal.