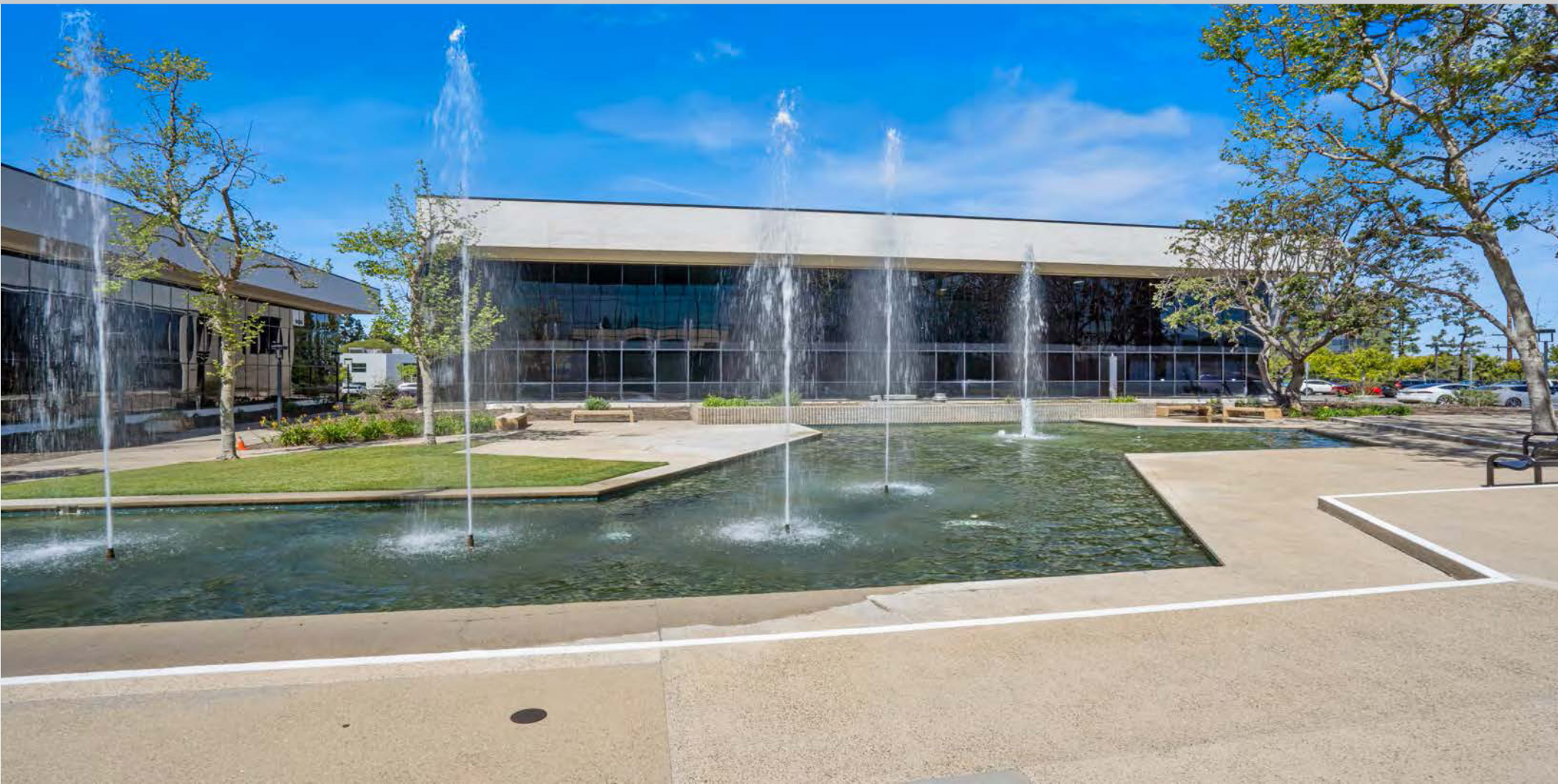


# FOR LEASE

## 23421 AND 23441 S. POINTE DRIVE

---



EXCLUSIVELY OFFERED BY:



**RUSS SMITH**  
949.565.5595  
rsmith@voitco.com  
Lic. #01919442



**MATT TURCUTTO**  
949.310.7280  
mturcutto@voitco.com  
Lic. #01921491

***Voit***  
REAL ESTATE SERVICES

2020 Main Street, Suite 100, Irvine, CA 92614





## PROPERTY FEATURES

---

- Lush Landscaping and Water Features throughout the Common Areas
- Abundant Free and In-Common Parking Provides Quick, Easy Access to the Office Suites
- Exterior Common Hallways Provide Great Air Circulation in the COVID-19 Era
- Both Buildings are Elevator Served, but also offer Multiple Stairwells for 2nd Floor Access
- Office Suites Range in Size from Approximately 600 – 2,500 SF

## CENTRAL LOCATION

---

- Convenient Access to the 5 and 405 Freeways
- Retail Amenities and Restaurants within a 10 Minute Walk:
  - Baja Fish Taco's
  - Pizza 900
  - Carl's Jr
  - Coco's Bakery
  - Shell – Gas, Convenience Store, Car Wash
- Retail Amenities and Restaurants within a 5-10 Minute Drive:
  - Spectrum Crossroads – BestBuy, McDonald's, Chevron Extra Mile, Del Taco, Subway
  - Lake Forest Gateway – Starbucks, Panera Bread, Buffalo -Wild Wings
  - Plaza Del Lago – Pita Pita, Moe's Deli, Krazy Eddys Donut Shop
  - Los Olivos Marketplace – Whole Foods, Starbucks, Puesto
  - Irvine Spectrum Center – Retail, Dining, Entertainment



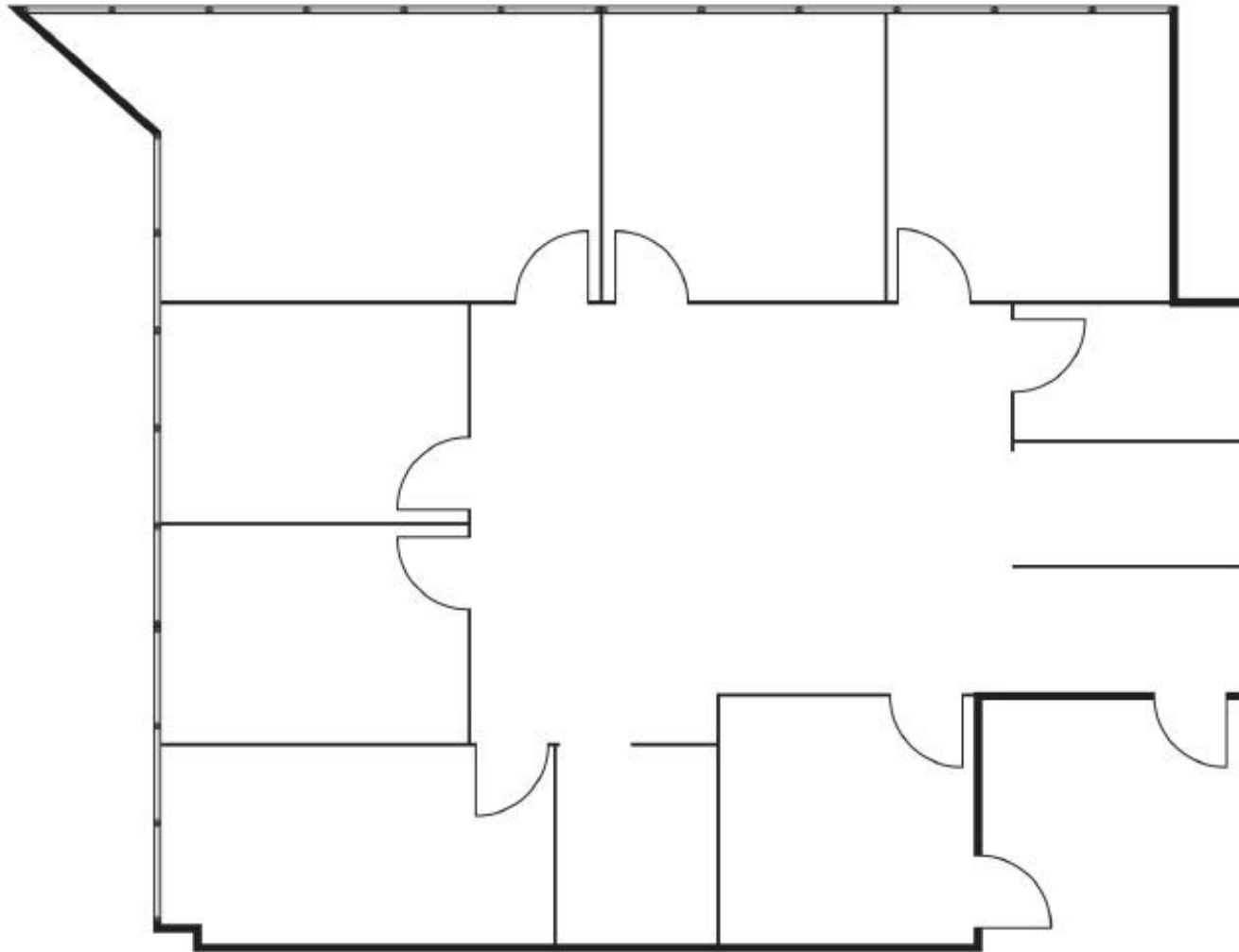
# EXTERIOR PHOTOS





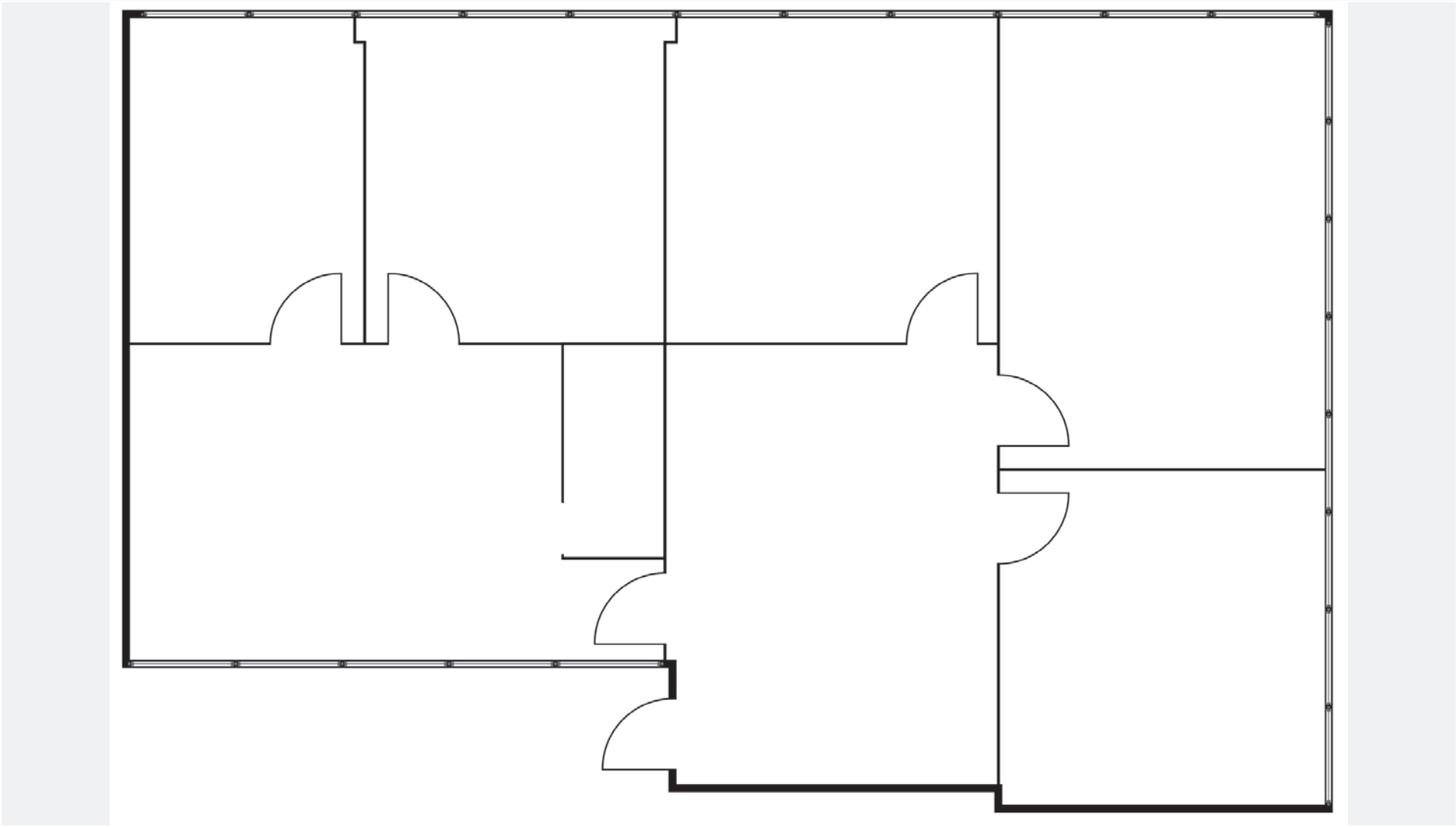
23441 SOUTH POINTE DRIVE

**SUITE 205 - 210 ±1,945 SF**



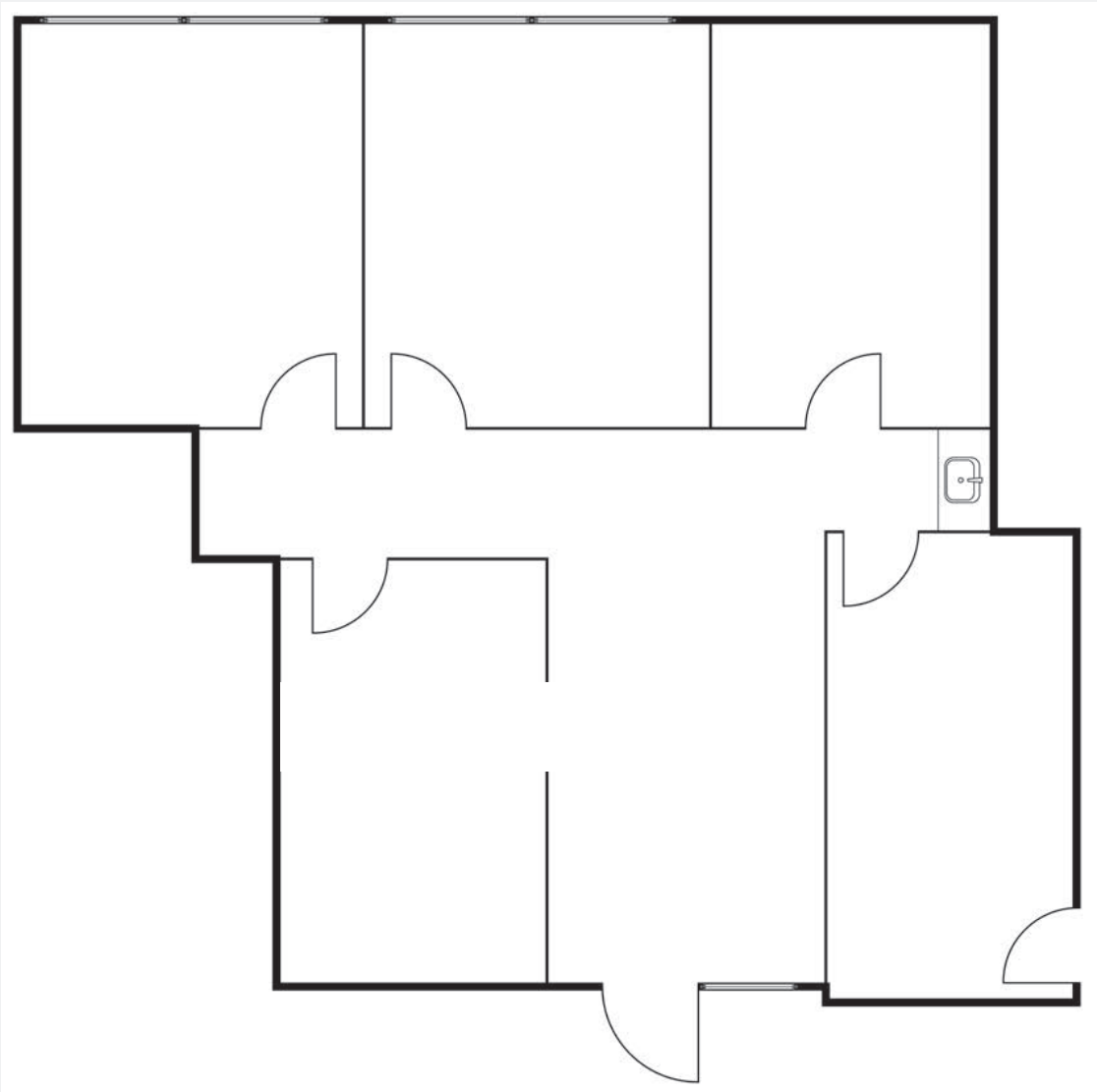
23441 SOUTH POINTE DRIVE

**SUITE 290 ±1,587 SF**



23421 SOUTH POINTE DRIVE

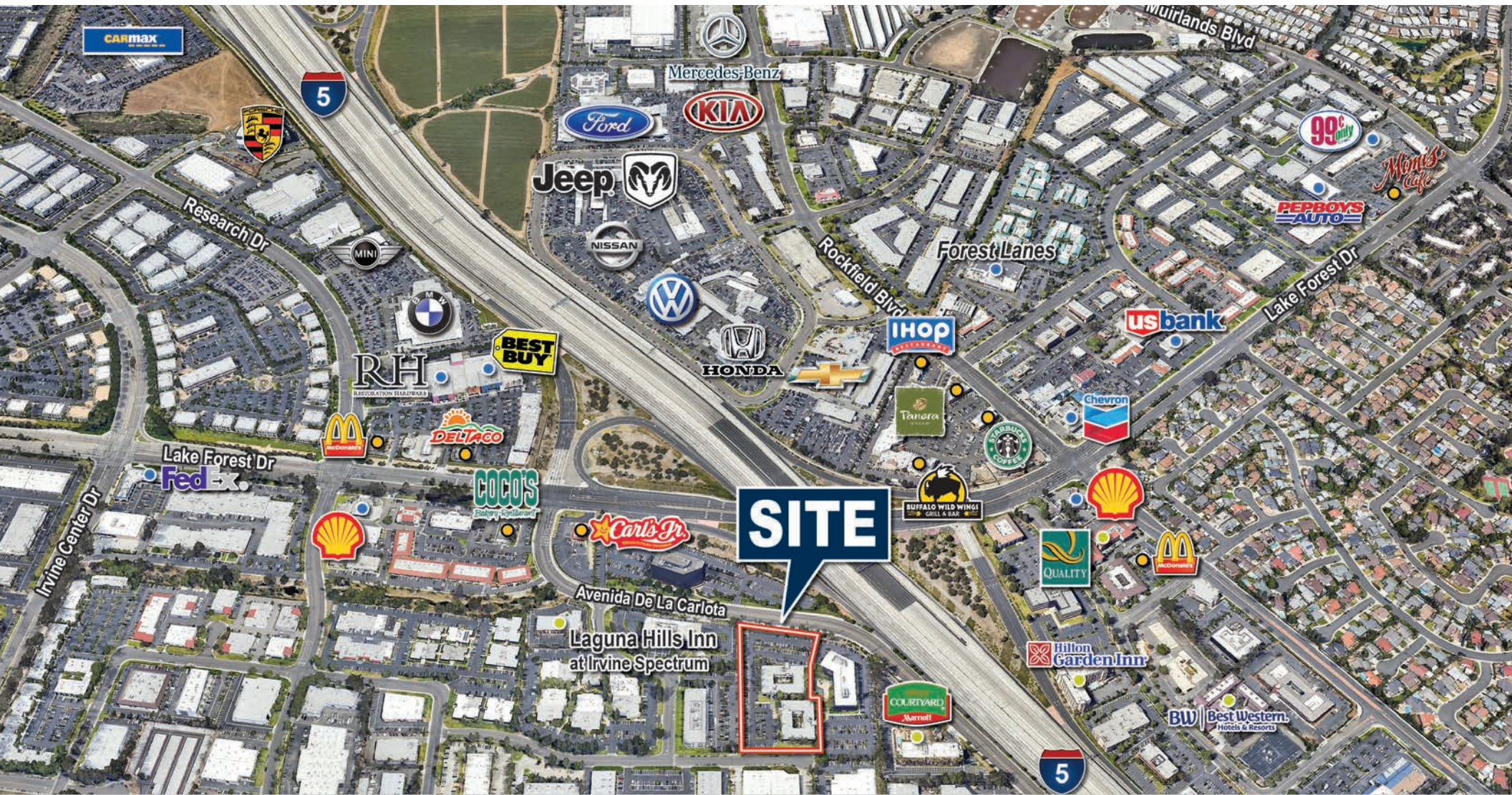
**SUITE 275 ±1,197 SF**





# FOR LEASE

23421 AND 23441 S. POINTE DRIVE



EXCLUSIVELY OFFERED BY:



**RUSS SMITH**  
949.565.5595  
rsmith@voitco.com  
Lic. #01919442



**MATT TURCUTTO**  
949.310.7280  
mturcutto@voitco.com  
Lic. #01921491

**Voit**  
REAL ESTATE SERVICES

2020 Main Street, Suite 100, Irvine, CA 92614