



Property Description

Remodeled 2nd Floor office space overlooking the downtown skyline is available in the new KOSU Spy building. The office has stair and elevator access with a private office, conference room, two new ADA restrooms and a break area.

*Broker/Owner

Property Highlights

- View of Downtown OKC skyline
- Windows & natural light throughout
- New restrooms, paint, carpet, HVAC, elevator and electrical throughout
- Sign opportunity
- Easy access to OKC Boulevard and I-40
- Neighbors include the Mexican Consulate and Starspace46

18 N Klein, Suite 200

Lease Rate:	\$2,500/month (MG)
Number of Available Units:	1
Available SF:	2,608 SF
Building Size:	9,934 SF

Barta Bailey

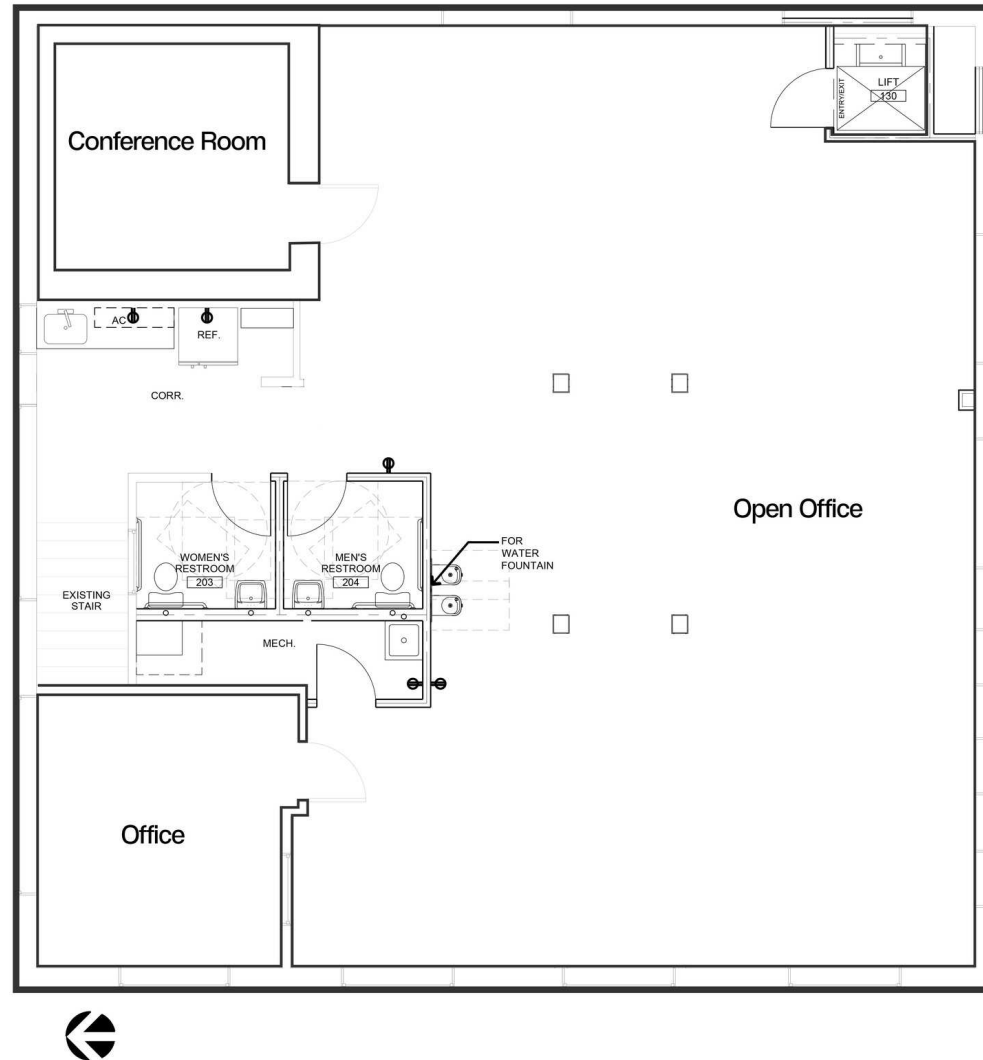
KOSU & THE SPY BUILDING 18 N KLEIN AVE, SUITE 200
OFFICE SUITE FOR LEASE



Barta Bailey

KOSU & THE SPY BUILDING 18 N KLEIN AVE, SUITE 200, OKLAHOMA CITY, OK 73106

OFFICE BUILDING FOR LEASE



Barta Bailey

KOSU & THE SPY BUILDING 18 N KLEIN AVE, SUITE 200
OFFICE SUITE FOR LEASE

