

DAYTON BUSINESS PARK

FOR LEASE

20 Haypress Road

Cranbury, NJ 08512



Suites are Available NOW!

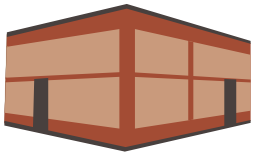
FOR LEASE 2,863 SF – 8,990 SF

- ▶ 100,000 sqft of flex warehouse space
- ▶ ESFR Sprinkler System
- ▶ State of the art swipe card access control
- ▶ Video Monitoring of the inside corridor and outside of the building
- ▶ Verizon FiOS and Comcast internet and phone service available
- ▶ Suites can be combined to make larger spaces.
- ▶ 24/7 access, Zoned Industrial 3, partial retail OK.

ALL SUITES HAVE

- ▶ 12' x 12' drive in door
- ▶ 10' x 9' door access to corridor
- ▶ Access to 4 loading docks with 10' x 9' doors
- ▶ City gas heat with separate meter
- ▶ 3 phase electric service with separate meter (heavy power available)
- ▶ High Efficiency LED Lighting
- ▶ 21 foot clear height ceilings
- ▶ Access to bathrooms and washroom with sink
- ▶ Offices and private bathrooms can be added

www.daytonbusinesspark.com

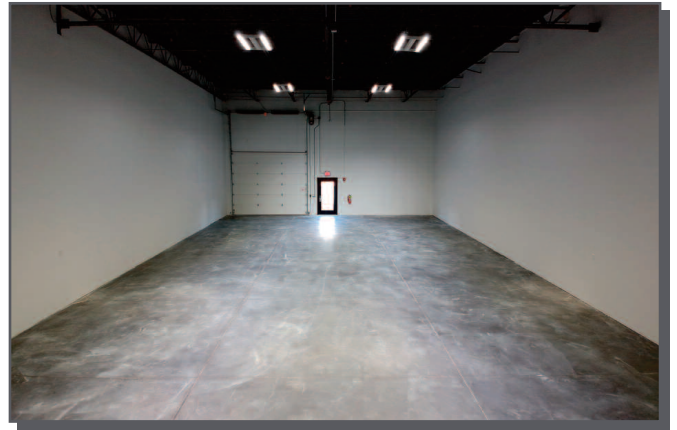


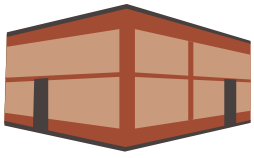
DAYTON BUSINESS PARK

FOR LEASE
20 Haypress Road
Cranbury, NJ 08512



VISUAL



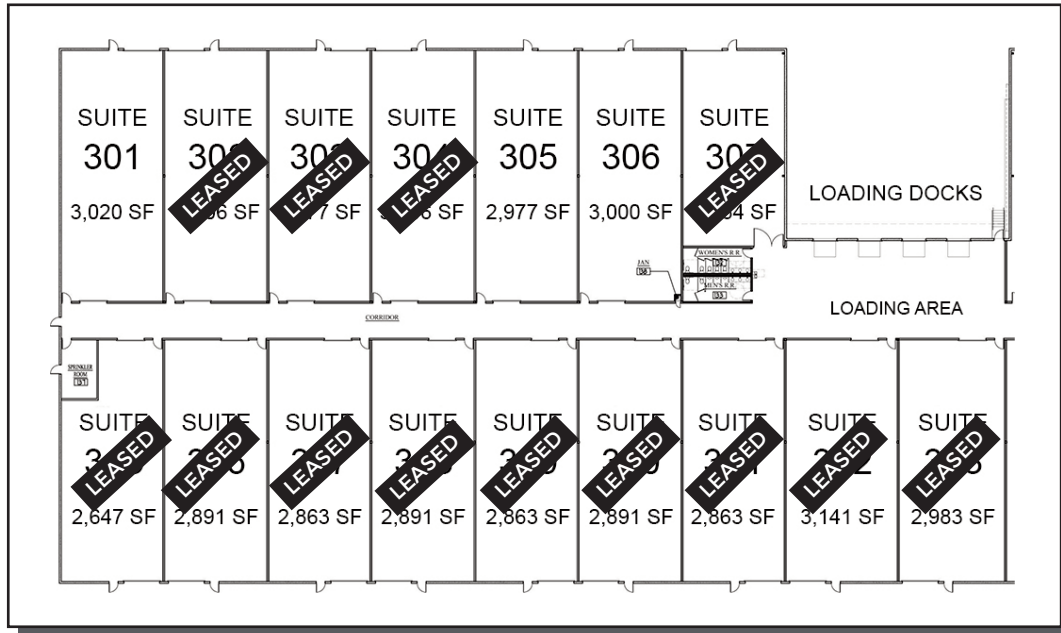


DAYTON BUSINESS PARK

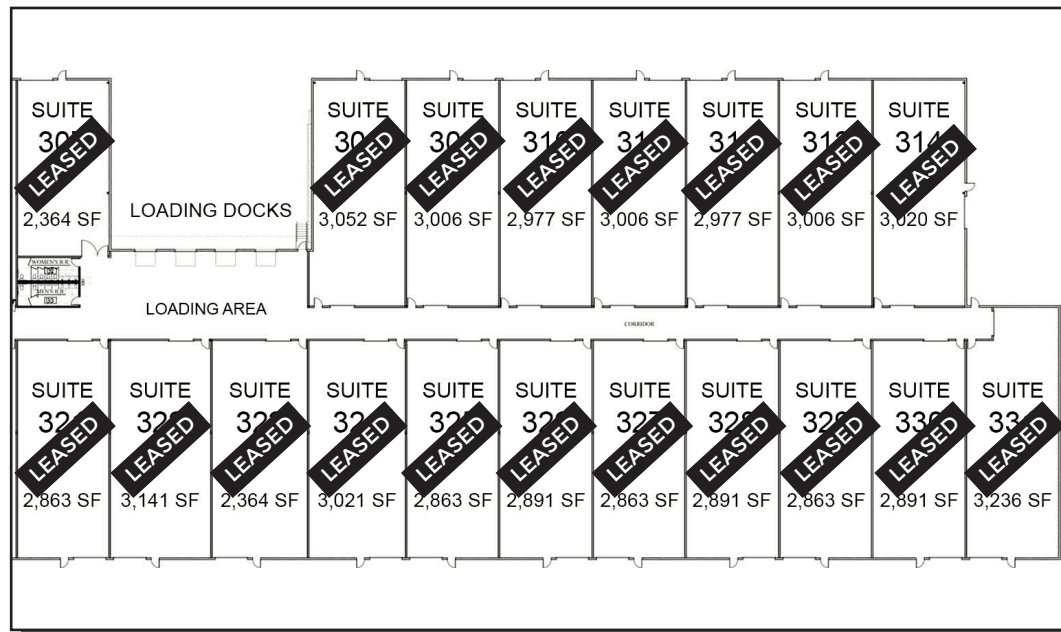
FOR LEASE
20 Haypress Road
Cranbury, NJ 08512

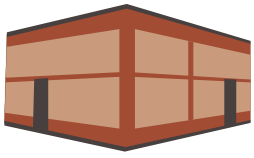


BUILDING LAYOUT



BUILDING LAYOUT





DAYTON BUSINESS PARK

FOR LEASE
20 Haypress Road
Cranbury, NJ 08512



LOCATION

- ▶ Set in a park-like setting in Central New Jersey
- ▶ Located minutes from Route 130, Route 1 and South Brunswick Park & Ride to NYC
- ▶ Minutes to Exit 8A of the NJ Turnpike/Route 95
- ▶ About 1 hour drive time to New York City and Philadelphia
- ▶ Princeton Junction Train Station is nearby



CONTACT INFO

Russell Wagner

732-392-6845

rwagner@daytonbusinesspark.com

