

**1800 Glenarm Pl**  
Denver, CO

**FOR SALE**

**Manuel Martin**  
970-698-0188  
manuel@stepcre.com

**James Bealer**  
936-444-5277  
james@stepcre.com







### Property Notes:

Position your business in the heart of Downtown Denver with this exceptional office condo opportunity at 1800 Glenarm Place. Just steps from the 16th Street corridor, the property offers immediate access to some of the city's best dining, retail, and transit amenities. This turnkey suite features a thoughtfully designed layout including a welcoming reception area, two private offices, a dedicated conference room, and a well-appointed break room.

|                             |              |
|-----------------------------|--------------|
| <b>Asking Price:</b>        | \$349,000    |
| <b>Suite Size:</b>          | 1,166 SF     |
| <b>Floor:</b>               | 9th Floor    |
| <b>Offices/Conf. Rooms:</b> | 2/1          |
| <b>HOA:</b>                 | ~\$700/month |





## Location Description

Situated in the heart of Downtown Denver, 1800 Glenarm Place offers immediate access to the city's business core. The property is located just steps from the 16th Street pedestrian corridor, providing walkable access to a wide array of restaurants, retail shops, hotels, and entertainment venues.

The area is surrounded by major office towers, government buildings, and corporate headquarters, creating a professional environment ideal for owner-users seeking a central, high-profile address. Convenient access to RTD light rail stations, bus routes, and nearby parking garages ensures excellent connectivity for employees and clients alike.

## Property Highlights

- Prime Downtown Denver office condo location
- Steps from the 16th Street corridor
- Turnkey, move-in ready suite
- Reception area with professional entry
- Two private offices
- Dedicated conference room
- Break room / kitchenette
- Ideal for owner-user
- Walkable to restaurants, retail, hotels, and public transit
- Strong long-term ownership opportunity

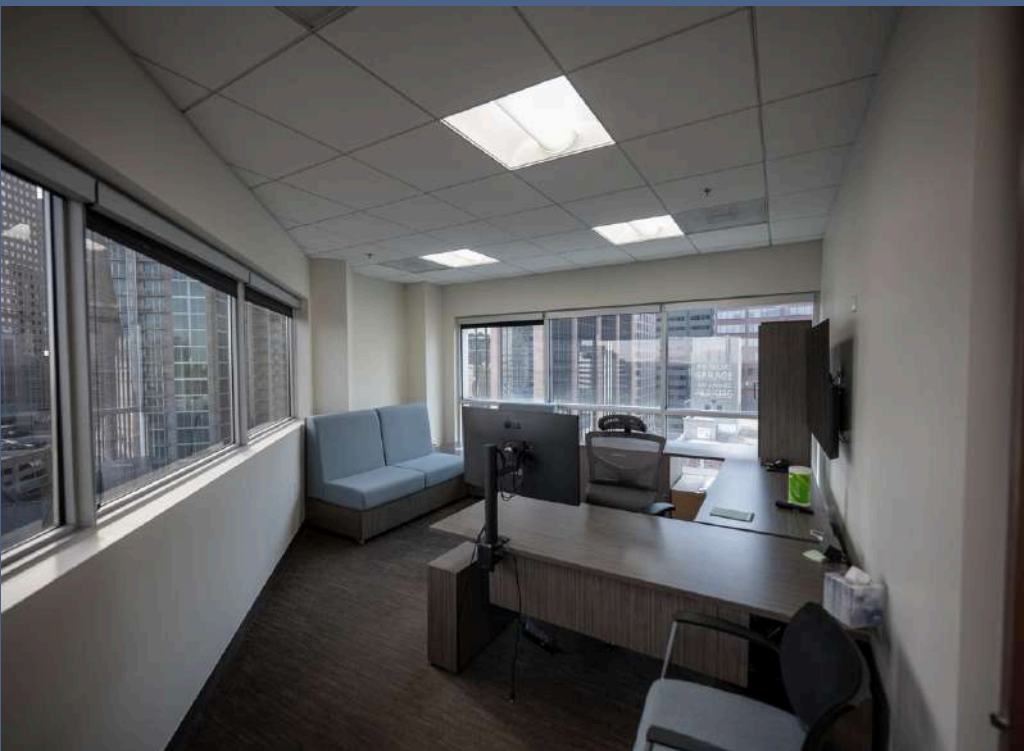




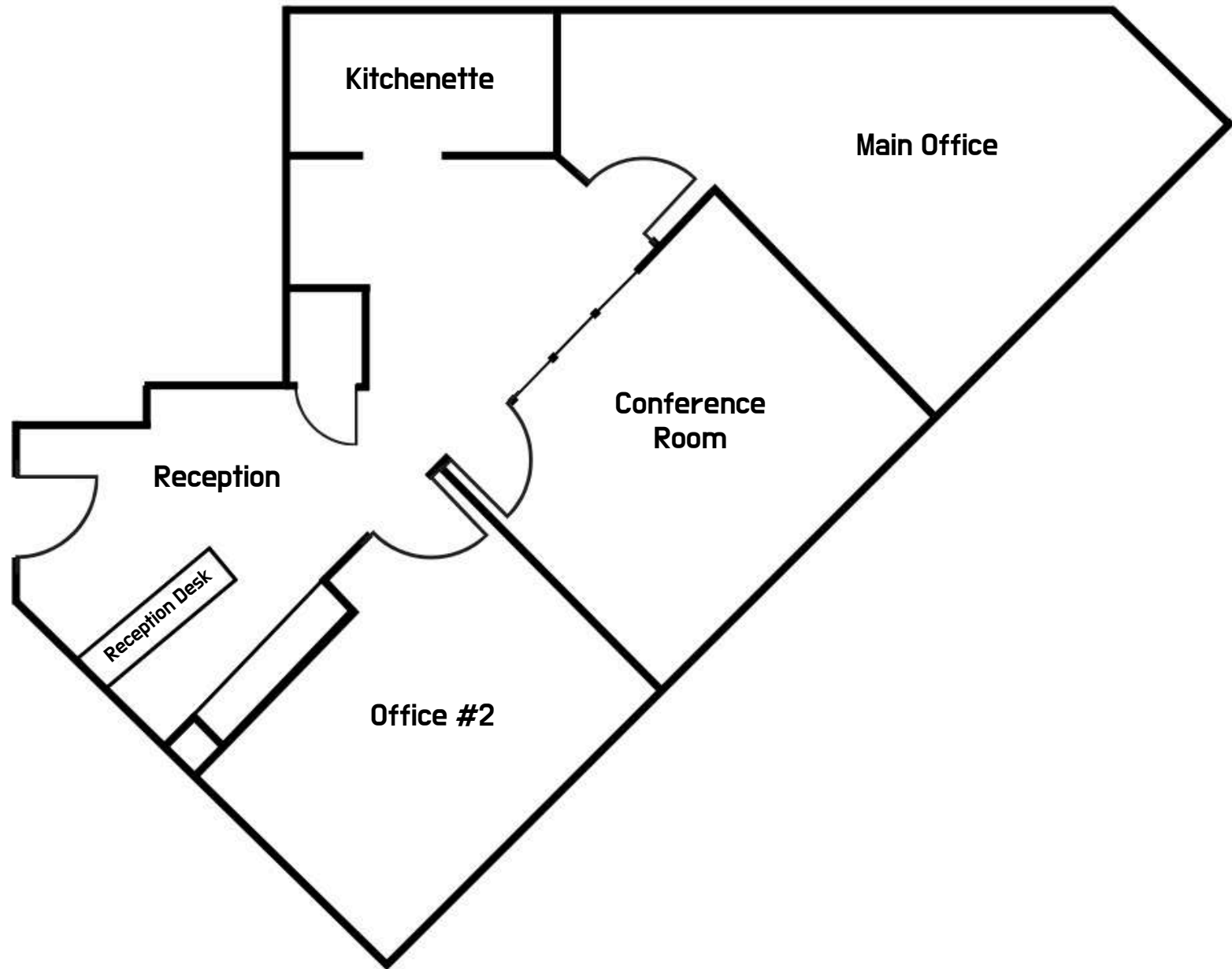








## Floor Plan







# Take the Next Step

Contact US



**Manuel Martin**

970-698-0188

[manuel@stepcre.com](mailto:manuel@stepcre.com)



**James Bealer**

936-444-5277

[james@stepcre.com](mailto:james@stepcre.com)