

**Professional Office  
Suite  
For Lease**



**170 South River Rd – Suite 206**

Bedford NH

**Property Features**

- 326± SF
- Performance Zoning
- Various allowable uses
- Ample Parking
- Public Water & Sewer
- Easy access to Rt I-293,I-93 and Rt. 101
- Property is owned by Brokers
- Available September 1st 2024



**Lease Rate: \$550.00 Month Gross**

Click [here](#) for more information.

**Louise Norwood**

603 657 1932

[louise@nainorwoodgroup.com](mailto:louise@nainorwoodgroup.com)

**Joe Robinson**

603 637 2012

[jrobinson@nainorwoodgroup.com](mailto:jrobinson@nainorwoodgroup.com)

**NAI** Norwood Group

The information contained herein has been given to us by the owner of the property or other sources we deem reliable, we have no reason to doubt its accuracy, but we do not guarantee it. All information should be verified prior to purchase or lease.

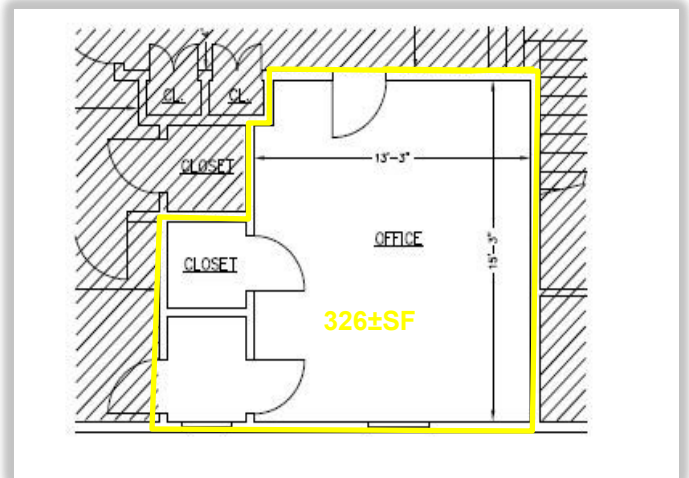
116 South River Road  
Bedford NH 03110  
+1 603 668 7000  
[nainorwoodgroup.com](http://nainorwoodgroup.com)



170 South River Road  
Suite 206



Well maintained classic columned colonial building situated in the heart of Bedford's South River Road office community. Renovated over time; family owned with pride of ownership and professionally managed - this property has a great street visibility and excellent parking while enjoying the surrounding amenities of The Manchester Country Club and other well regarded eateries; convenient shopping and close high-way access to all points.



**Lease Rate: \$550.00** Month Gross

Louise Norwood  
603 657 1932 [louise@nainorwoodgroup.com](mailto:louise@nainorwoodgroup.com)

Joe Robinson  
603 637 2012 [jrobinson@nainorwoodgroup.com](mailto:jrobinson@nainorwoodgroup.com)

**NAI**Norwood Group

116 South River Road  
Bedford NH 03110  
+1 603 668 7000  
[nainorwoodgroup.com](http://nainorwoodgroup.com)