

# Commercial Building For Sale

688 J Clyde Morris Boulevard, Newport News, VA 23601



## Spacious Office Building

This 3,226 square foot building is located in Newport News with 66 feet of frontage on J Clyde Morris Boulevard. The building includes a pylon sign that is visible to the over 38,000 vehicles per day that pass through. The owner is ready to retire and for the right price is willing to sell the beauty bar business and equipment. Potential buyer can profit from continuing the beauty bar business or lease the building to up to 3 tenants. Don't miss out on this gem of a revenue stream. Ask about the vacant 0.49 acre lot next door.

**Sale Price: \$895,000**

*Please ask agent about the price of the business and equipment*

PRESENTED BY:

**Antonio Tedesco**

Agent

757-927-6254

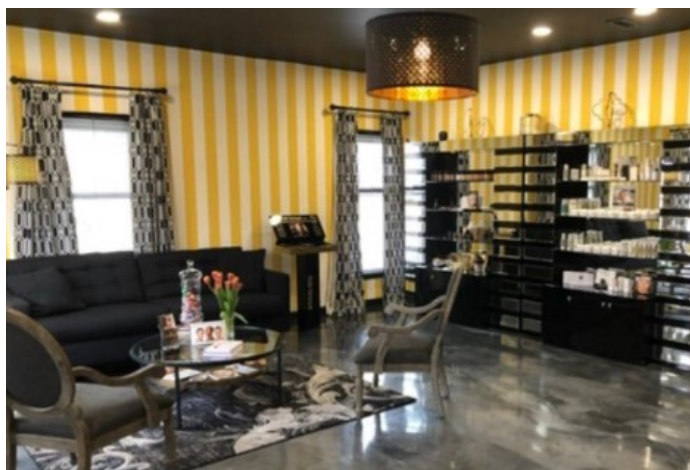
[atedesco@midatlanticcommercial.com](mailto:atedesco@midatlanticcommercial.com)

**MID ATLANTIC**  
COMMERCIAL  
REAL ESTATE



# Commercial Building For Sale

688 J Clyde Morris Boulevard, Newport News, VA 23601



**Antonio Tedesco**

**Agent / 757-927-6254 / [atedesco@midatlanticcommercial.com](mailto:atedesco@midatlanticcommercial.com)**

The information contained herein has been obtained from sources that are deemed to be reliable. However, Mid-Atlantic Commercial and its Agent(s) make no representation and assumes no liability as to the accuracy and validity of the information herein. Purchasers are advised to perform their own research and verification in order to determine the suitability of the Property for their purchase. Jonathan Guion is Managing Broker for Mid-Atlantic Commercial and can be reached at 757-867-8777 or at [jguion@midatlanticcommercial.com](mailto:jguion@midatlanticcommercial.com).



# Commercial Building For Sale

688 J Clyde Morris Boulevard, Newport News, VA 23601



**Antonio Tedesco**

**Agent / 757-927-6254 / [atedesco@midatlanticcommercial.com](mailto:atedesco@midatlanticcommercial.com)**

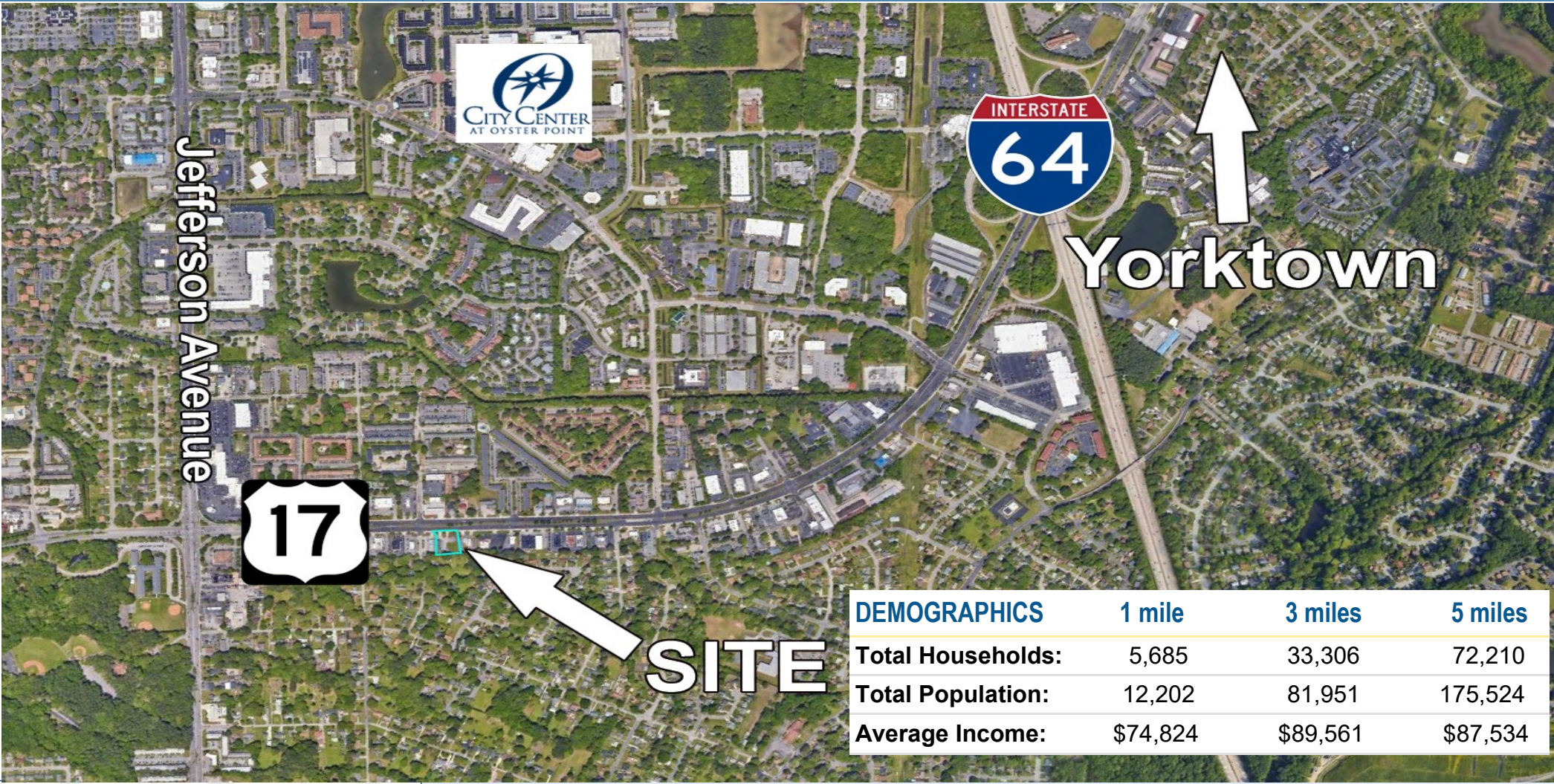
The information contained herein has been obtained from sources that are deemed to be reliable. However, Mid-Atlantic Commercial and its Agent(s) make no representation and assumes no liability as to the accuracy and validity of the information herein. Purchasers are advised to perform their own research and verification in order to determine the suitability of the Property for their purchase. Jonathan Guion is Managing Broker for Mid-Atlantic Commercial and can be reached at 757-867-8777 or at [jguion@midatlanticcommercial.com](mailto:jguion@midatlanticcommercial.com).





# Commercial Building For Sale

688 J Clyde Morris Boulevard, Newport News, VA 23601



DEMOGRAPHICS	1 mile	3 miles	5 miles
Total Households:	5,685	33,306	72,210
Total Population:	12,202	81,951	175,524
Average Income:	\$74,824	\$89,561	\$87,534

**Antonio Tedesco**  
**Agent / 757-927-6254 / [atedesco@midatlanticcommercial.com](mailto:atedesco@midatlanticcommercial.com)**

The information contained herein has been obtained from sources that are deemed to be reliable. However, Mid-Atlantic Commercial and its Agent(s) make no representation and assumes no liability as to the accuracy and validity of the information herein. Purchasers are advised to perform their own research and verification in order to determine the suitability of the Property for their purchase. Jonathan Guion is Managing Broker for Mid-Atlantic Commercial and can be reached at 757-867-8777 or at [jguion@midatlanticcommercial.com](mailto:jguion@midatlanticcommercial.com).