



Love Lane, Lake Elsinore, CA

Commercial MS-C Zone

Asking Price

**\$4,200,000**

Zoning	Acres	Storage Yard	Truck Parking
M-SC / R-A-5	9.74	Water Well	Easy Freeway Access



Ample Space



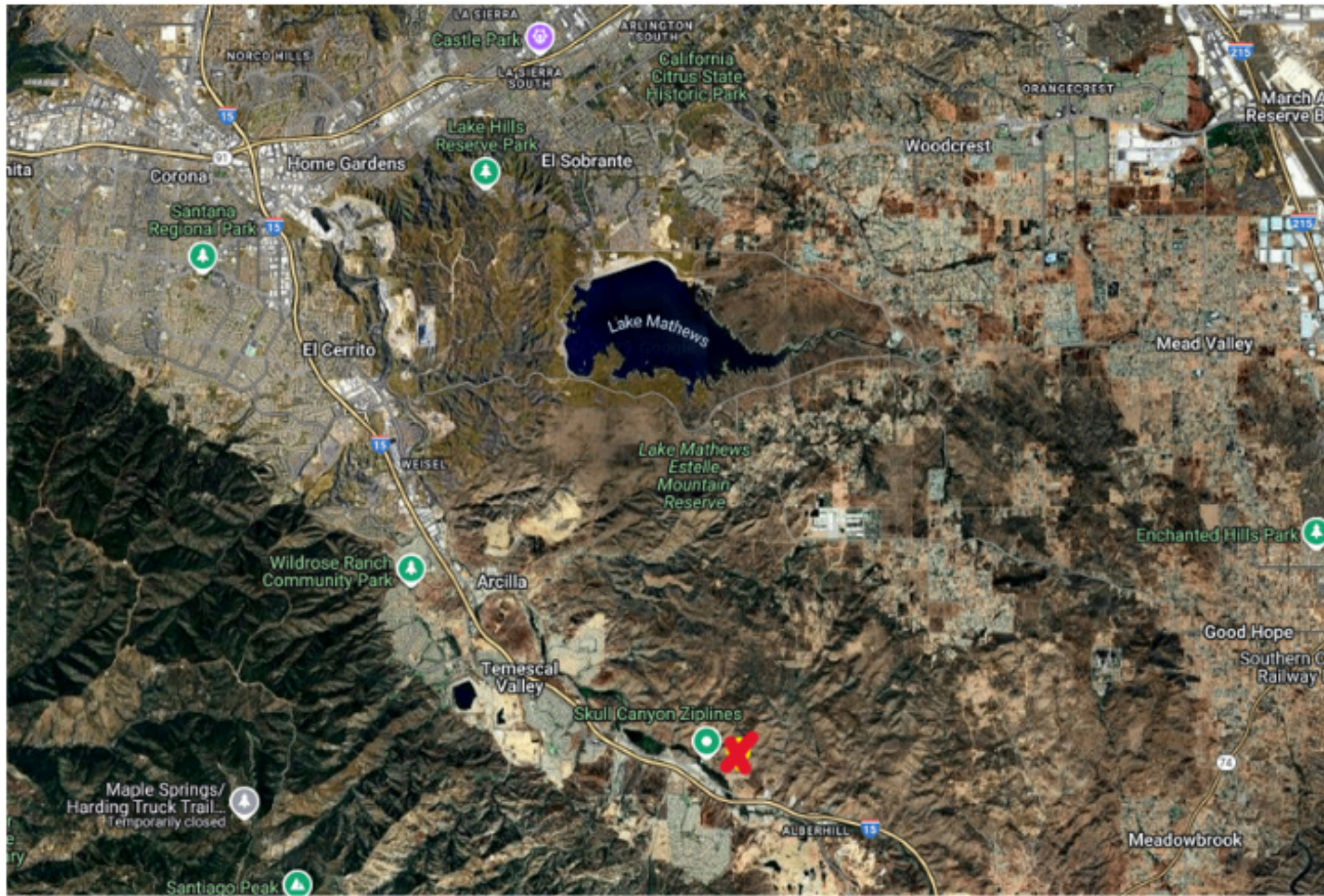
Water Well



## Industrial Property

This industrial-zoned property in Lake Elsinore, CA, is perfect for trucking, logistics, and storage. With M-SC zoning in Riverside County and a water well on-site, it offers a prime opportunity for businesses looking to expand or establish operations.





## 15 Freeway

Strategically positioned right off the 15 freeway on Love Lane, this location ensures seamless transportation and distribution. With quick and easy freeway access, moving goods in and out is effortless, making it a valuable asset for businesses that rely on efficiency and connectivity. This growing industrial corridor is a prime location for companies looking to scale their operations with ease.

## Off Temescal Canyon Rd







## Prime Business Location – Off the 15 Freeway, South of Corona

- ✓ High-Traffic Corridor – Easy access to Inland Empire, San Diego, and Los Angeles.
- ✓ Thriving Industrial Hub – Rapidly growing business and logistics area.
- ✓ Lower Transportation Costs – Quick freeway access for efficient distribution.
- ✓ Ideal for Trucking & Warehousing – Perfect for logistics and supply chain operations.
- ✓ Skilled Workforce Nearby – Access to a strong labor pool.
- ✓ Business-Friendly Area – Supportive zoning and policies for industrial growth.
- ✓ Less Congestion – Avoid LA traffic while staying well-connected.
- ✓ Expansion Potential – A smart long-term investment in a growing market.
- ✓ Rare Opportunity – Limited industrial space in this prime location.





PROVIDENT

fiv BROKERED BY realty

**ALISHA DUGGER**

**(951) 314-9995**

[Alisha@ProvidentRealEstate.com](mailto:Alisha@ProvidentRealEstate.com)

