

10190 PLYMOUTH ROAD
PLYMOUTH, MICHIGAN

INDUSTRIAL FOR SALE OR LEASE
6,734 Square Feet Available



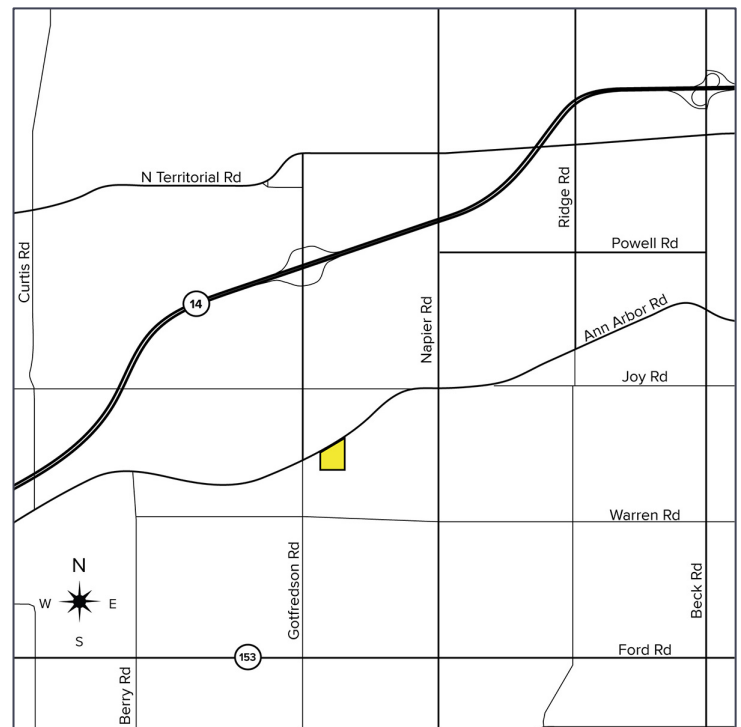
**SIGNATURE
ASSOCIATES**
KNOW SIGNATURE | KNOW RESULTS

OUTDOOR STORAGE OPPORTUNITY



PROPERTY FEATURES

- 6,734 square feet available
- Outdoor storage opportunity: 5+ acres for landscaping or similar businesses
- Ideal for businesses seeking to expand operations or establish a convenient satellite location
- 14 individual storage stations - flexible, dedicated spaces for equipment, materials and vehicles
- Private steel gate entrance for enhanced security with restricted access, ensuring peace of mind for your assets
- Prominent Plymouth Road signage – high-visibility location for easy client access and branding opportunities
- Lease Rate: \$12,000/month Gross
- Sale Price: \$1,800,000 (\$267.30/sq. ft.)



For more information, please contact:

STEVE GORDON

(248) 948 0101

sgordon@signatureassociates.com

DRAKE FILIPPIS

(248) 799 3161

dfilippis@signatureassociates.com

SIGNATURE ASSOCIATES

One Towne Square, Suite 1200

Southfield, MI 48076

www.signatureassociates.com

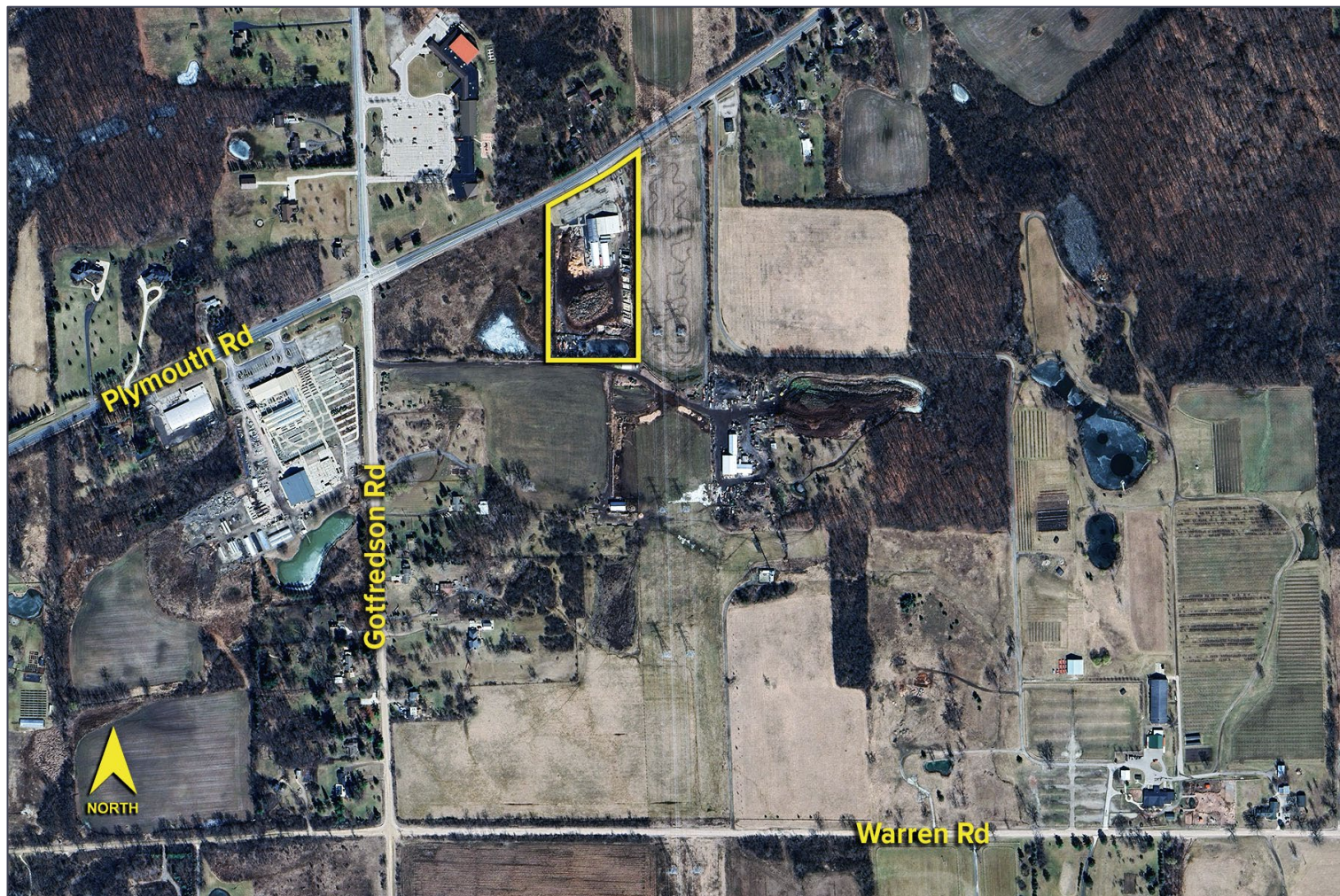
Information is subject to verification and no liability for errors or omissions is assumed. Price is subject to change and listing withdrawal.

10190 Plymouth Road – Plymouth, Michigan

Industrial For Sale or Lease

6,734
Square Feet
AVAILABLE

Aerial



For more information, please contact:

STEVE GORDON

(248) 948 0101

sgordon@signatureassociates.com

DRAKE FILIPPIS

(248) 799 3161

dfilippis@signatureassociates.com

SIGNATURE ASSOCIATES

One Towne Square, Suite 1200

Southfield, MI 48076

www.signatureassociates.com

Information is subject to verification and no liability for errors or omissions is assumed. Price is subject to change and listing withdrawal.