

## 416 GLADE DR

416 GLADE DRIVE OKLAHOMA CITY, OK 73127



### PROPERTY DESCRIPTION

Price Edwards is pleased to bring 416 Glade Dr to the leasing market. This upgraded shop is ready for its next iteration with new LED lights, 800 amps of 3-phase power, and newer paneling - this space is sure to fit a variety of industrial uses. The 14 ft bay door along with 2 points of access to the shared outside storage area allows for easy access for inventory/storage.

### PROPERTY HIGHLIGHTS

- Heavy 3-Phase Power: 800 amps
- Gas Heater in Shop
- 15 ft Clear at Peak 14 ft at Eave
- LED Shop Lights
- 3 offices, 2 bathrooms
- Outside Storage

### OFFERING SUMMARY

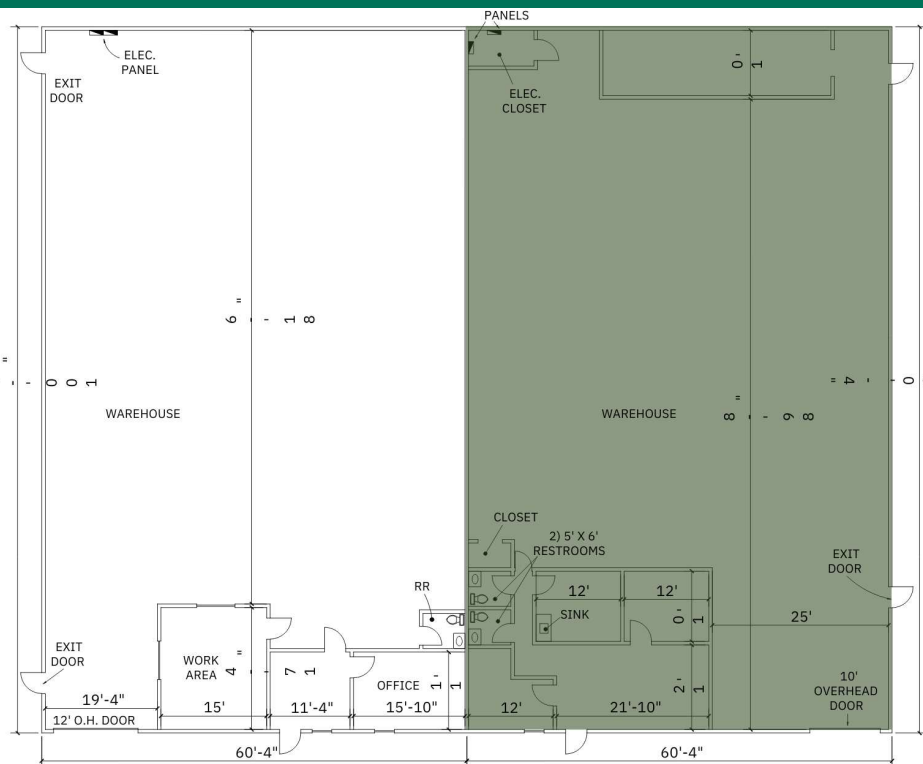
<b>Lease Rate:</b>	\$6.50 PSF (NNN)
<b>Number of Units:</b>	1
<b>Available SF:</b>	6,053
<b>Total SF:</b>	12,106

#### ANDREW HOLDER

aholder@priceedwards.com  
O: 580.430.5124

## 416 GLADE

416 GLADE DRIVE OKLAHOMA CITY, OK 73127



**ANDREW HOLDER**

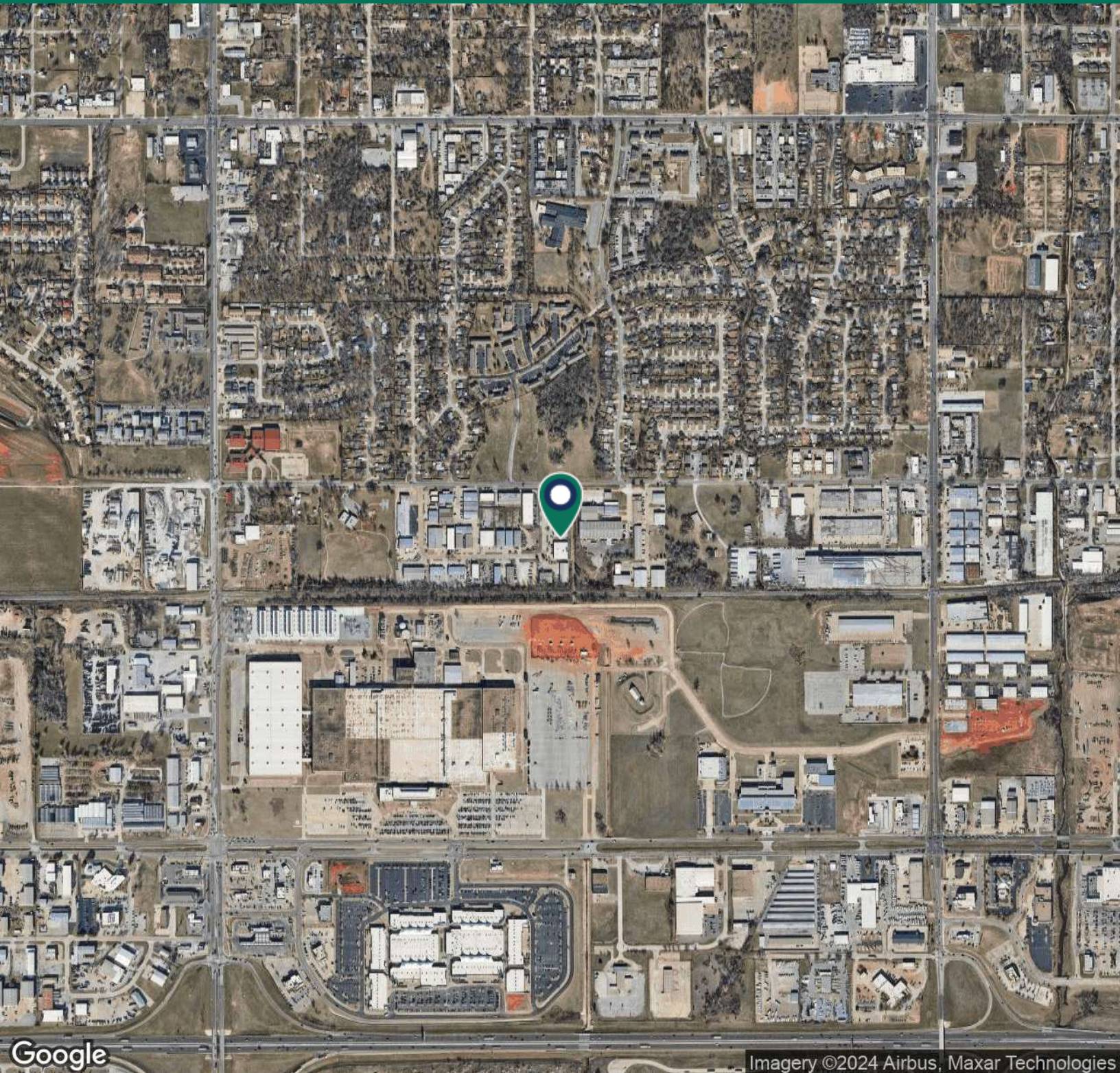
aholder@priceedwards.com

O: 580.430.5124

**PRICE EDWARDS**  
AND COMPANY

## 416 GLADE

416 GLADE DRIVE OKLAHOMA CITY, OK 73127



**ANDREW HOLDER**

[aholder@priceedwards.com](mailto:aholder@priceedwards.com)

O: 580.430.5124

**PRICE  
EDWARDS**  
AND COMPANY