

51,076 RSF AVAILABLE

**QUANTICO CORPORATE CENTER**  
800 CORPORATE DRIVE, STAFFORD, VA

The intersection of a consortium of highly advanced technological corporations and the region's most strategically positioned address



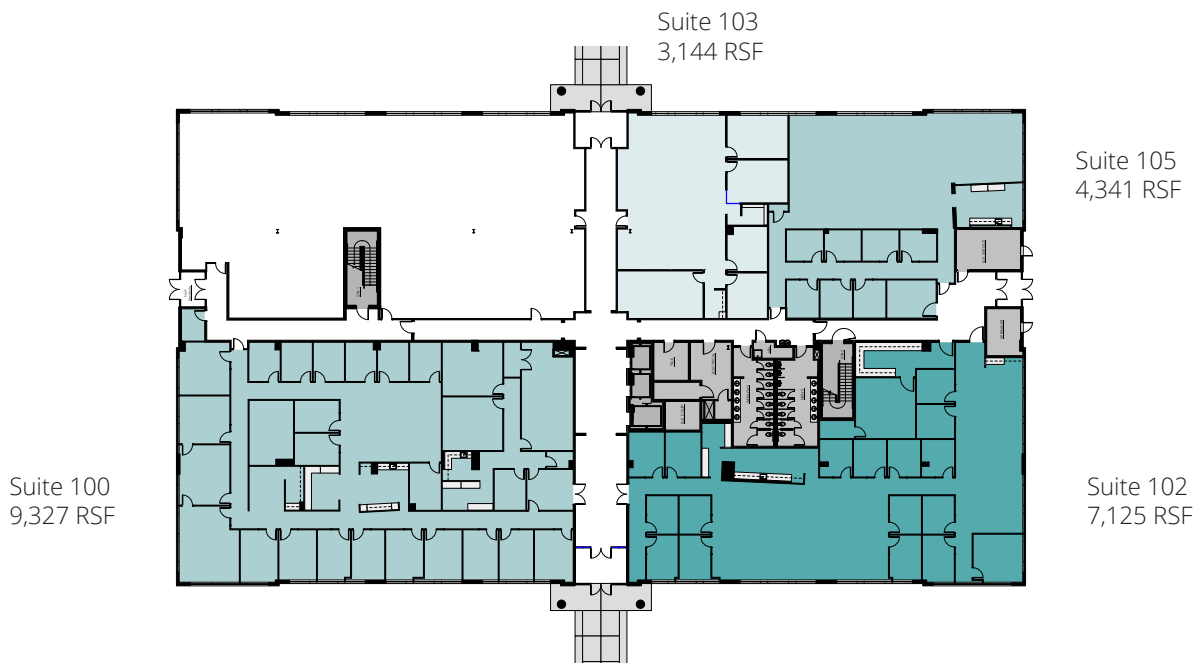




### AVAILABILITY ON 2ND, 3RD, AND 4TH FLOORS

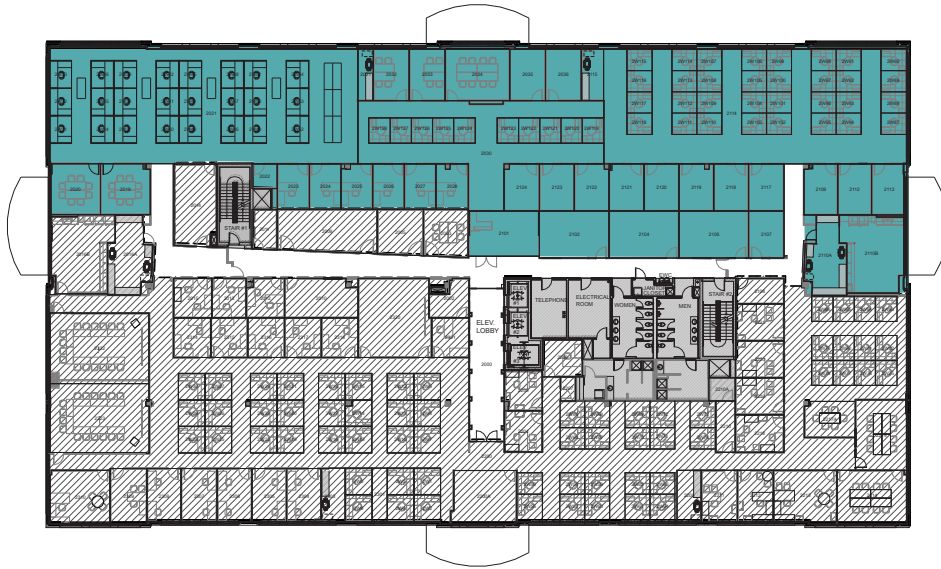
- Easy access to route 1 and I-95
- 1 mile to Marine Corps Base Quantico South Gate
- 25 minutes from Fort Belvoir
- 45 minutes from the Pentagon and Washington, DC
- Parking ratio 4.00 / 1,000 SF
- Perfect for government contractor associated with Quantico
- On-site fitness center and deli

### 1ST FLOOR



## 2ND FLOOR

15,415 RSF



## 3RD FLOOR

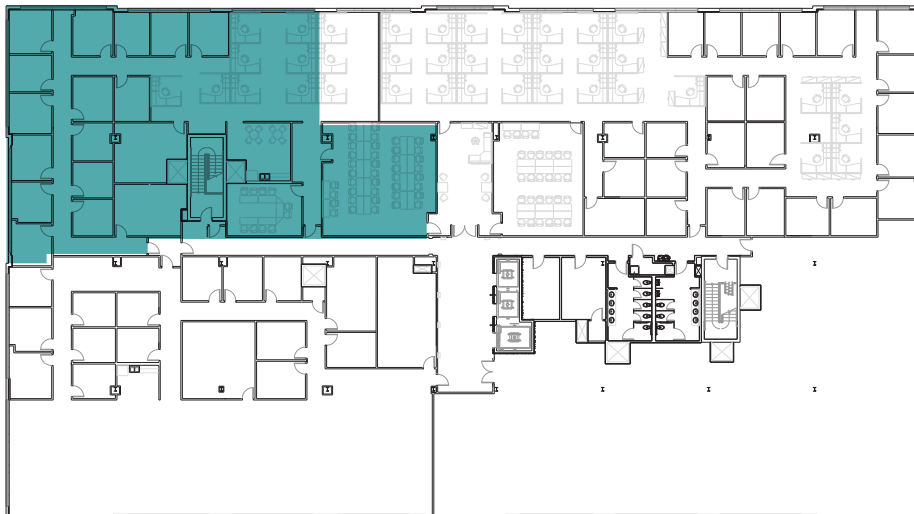


Suite 311  
3,663 RSF

Suite 315  
1,119 RSF

## 4TH FLOOR

Suite 401  
6,942 RSF





1 MILE TO MCB QUANTICO SOUTH GATE



Marine Corps Base Quantico



MISSION BBQ The American Way	TA.CO	KOHL'S	LOWE'S	Starbucks	BEST BUY
ALDI	BURGER KING	Walmart	Hallmark Cards	Michaels Where Creativity Happens	FIVE BELOW
DOLLAR GENERAL	LOUISIANA TECH POPEYES	BED BATH & BEYOND	ROSS DRESS FOR LESS		

DAVID STOUT  
703 485 8769  
david.stoudt@jll.com

TRACI MORRIS-COLE  
703 328 7884  
tmc@195bpm.com

ACRAM GROUP

MID-ATLANTIC ACQUISITIONS, LLC



Although information has been obtained from sources deemed reliable, neither Owner nor JLL makes any guarantees, warranties or representations, express or implied, as to the completeness or accuracy as to the information contained herein. Any projections, opinions, assumptions or estimates used are for example only. There may be differences between projected and actual results, and those differences may be material. The Property may be withdrawn without notice. Neither Owner nor JLL accepts any liability for any loss or damage suffered by any party resulting from reliance on this information. If the recipient of this information has signed a confidentiality agreement regarding this matter, this information is subject to the terms of that agreement.  
©2023. Jones Lang LaSalle IP, Inc. All rights reserved.