

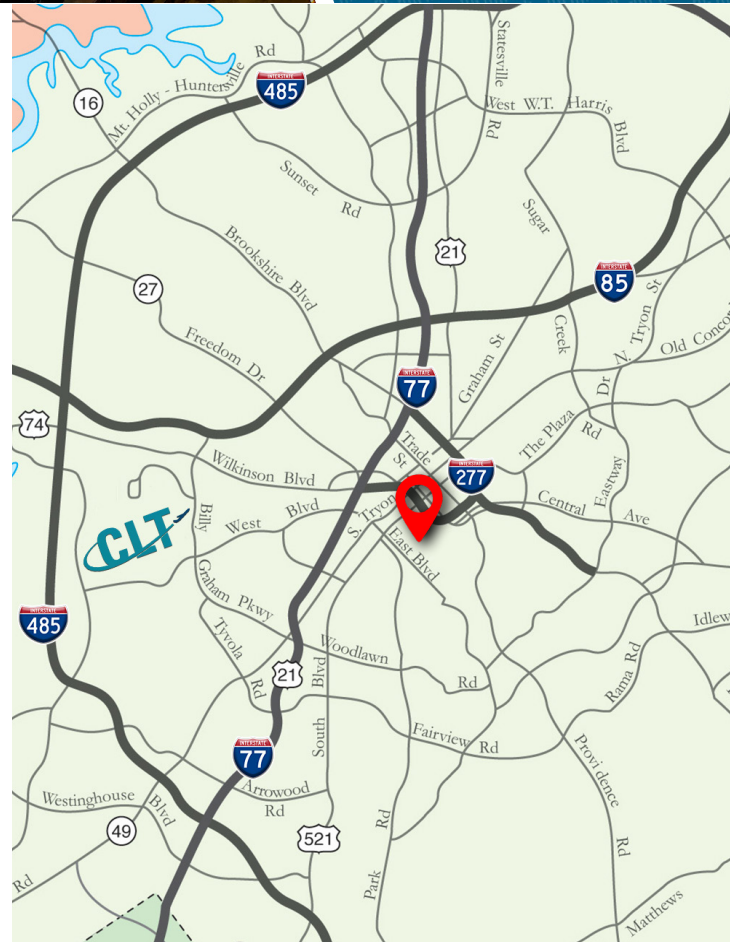


THE ADDISON

831 E MOREHEAD STREET
SUITE 640
CHARLOTTE, NC 28202

±3,721 SF OFFICE FOR LEASE

- Nine-story office building, ±68,000 SF
- Built in 1926 as Charlotte's first luxury condominium, converted to office and expanded in 1997. Registered as a local Historic Landmark
- Abundant parking with a covered deck at a 3 per 1,000 SF ratio
- Excellent visibility at a signalized intersection at the corner of S McDowell and East Morehead Street
- ±3,000 multifamily residential units planned in the immediate area
- Situated in the heart of Charlotte's Midtown market, adjacent to Uptown, the Atrium Pearl District Campus and access to I-277/I-77
- Walkable to Carson Light Rail and numerous Midtown and South End restaurants and amenities

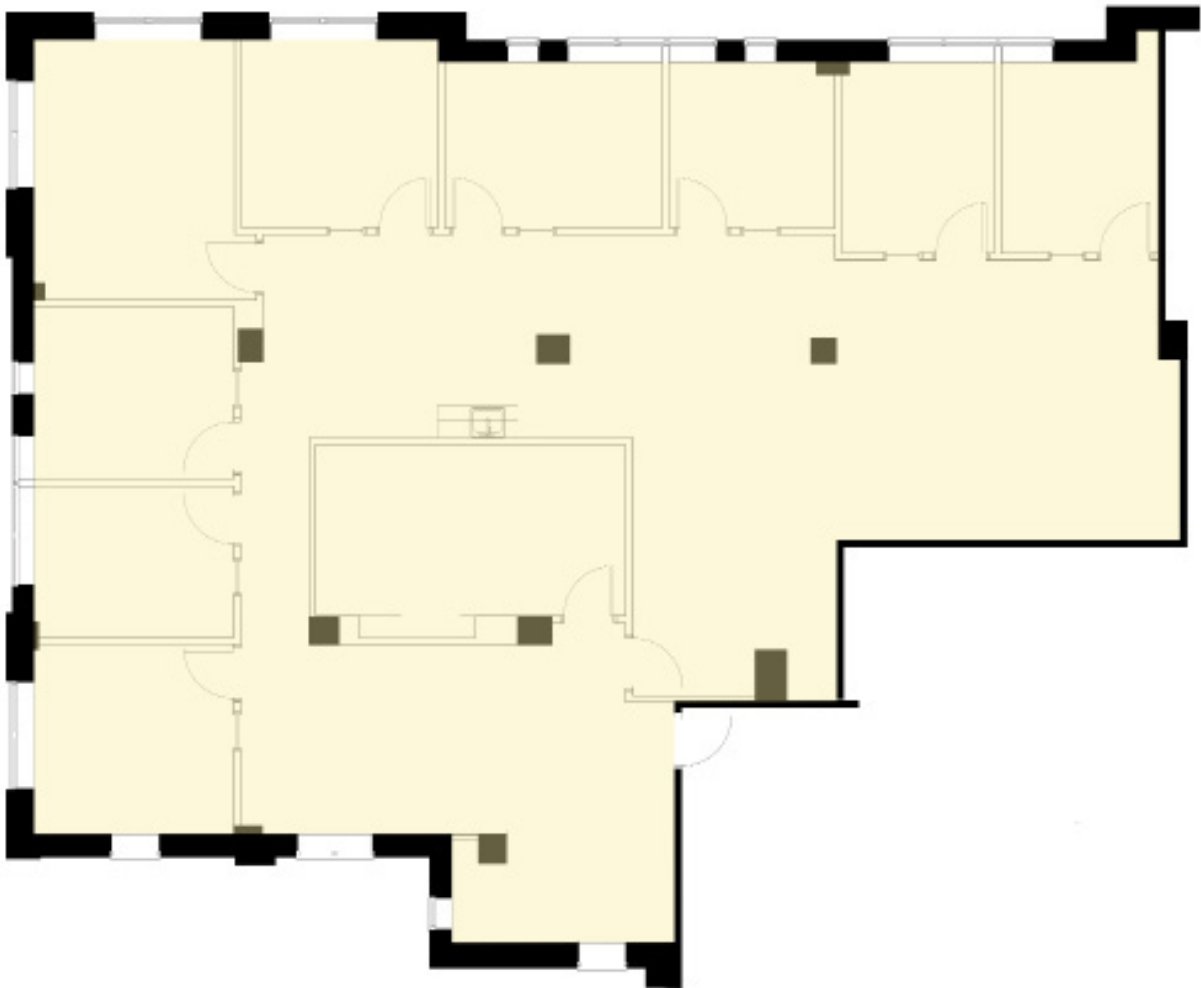




THE ADDISON

831 E MOREHEAD STREET
SUITE 640
CHARLOTTE, NC 28202

SUITE 640: ±3,721 SF



SURROUNDING AMENITIES

THE ADDISON

831 E MOREHEAD STREET
SUITE 640
CHARLOTTE, NC 28202



Beacon Partners is a commercial real estate firm specialising in the development, acquisition, and operation of industrial, office and mixed-use properties. Beacon leases, owns or manages more than 17.5+ million square feet of space throughout the Carolinas.