

# FOR LEASE

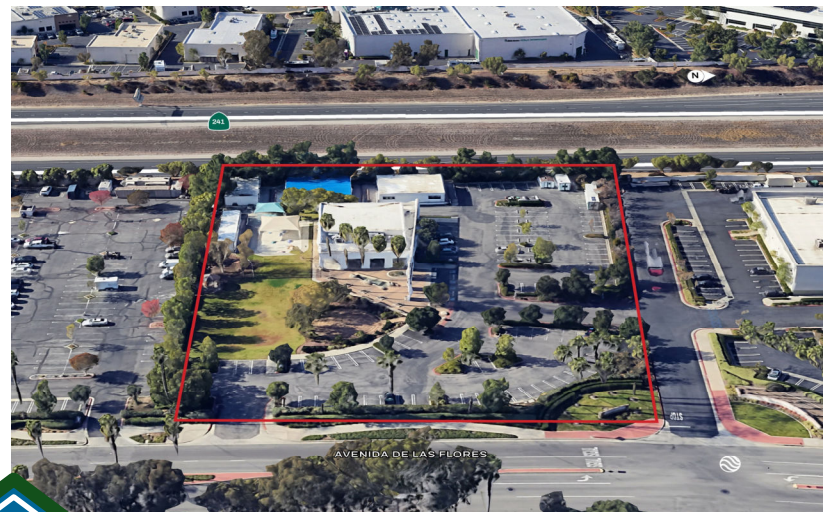
4,864 SF RELIGIOUS FACILITY WITH +/-120 PARKING SPACES



**30605 Avenida de las Flores**  
Rancho Santa Margarita, CA 92688

## OPPORTUNITY OVERVIEW

A rare 4,868 S.F. religious facility with +/-120 parking spaces is available in Rancho Santa Margarita, California. This beautiful church sits on 2.4 acres and includes a large sanctuary and a fully operational kitchen. The property is complete with plenty of walking areas, ample parking, playground area and three (3) bonus modular buildings. Located near retail and restaurants, this “one of a kind” property has great access to Santa Margarita Parkway and the 241 Tollway.



**Listing  
Agents**

**Brian Childs**  
Executive Managing Director  
949.468.2309  
[bchilds@naicapital.com](mailto:bchilds@naicapital.com)  
CA BRE Lic. #00893394

**David Knowlton SIOR, CCIM**  
Executive Vice President  
949.468.2307  
[dknowlton@naicapital.com](mailto:dknowlton@naicapital.com)  
CA BRE Lic. #00893394

**NAI Capital**  
COMMERCIAL REAL ESTATE SERVICES, WORLDWIDE

# FOR LEASE

4,864 SF RELIGIOUS FACILITY WITH +/-120 PARKING SPACES

## 30605 Avenida de las Flores

Rancho Santa Margarita, CA 92688

### PROPERTY HIGHLIGHTS

- 4,868 SF Religious Facility with Extra Parking Spaces
- Foyer, Large Sanctuary, Kitchen, Two Restrooms
- Outside Playground, Fellowship Plaza, Meditation Garden
- Three (3) Bonus Modular Buildings
- +/-120 Parking Spaces
- Est. HH Avg. Income: \$196,103 (3-Mile Radius)
- Less Than One Mile to 241 Tollway/Santa Margarita Parkway Interchange



Listing  
Agents

**Brian Childs**  
Executive Managing Director  
949.468.2309  
bchilds@naicapital.com  
CA BRE Lic. #00893394

**David Knowlton SIOR, CCIM**  
Executive Vice President  
949.468.2307  
dknowlton@naicapital.com  
CA BRE Lic. #00893394

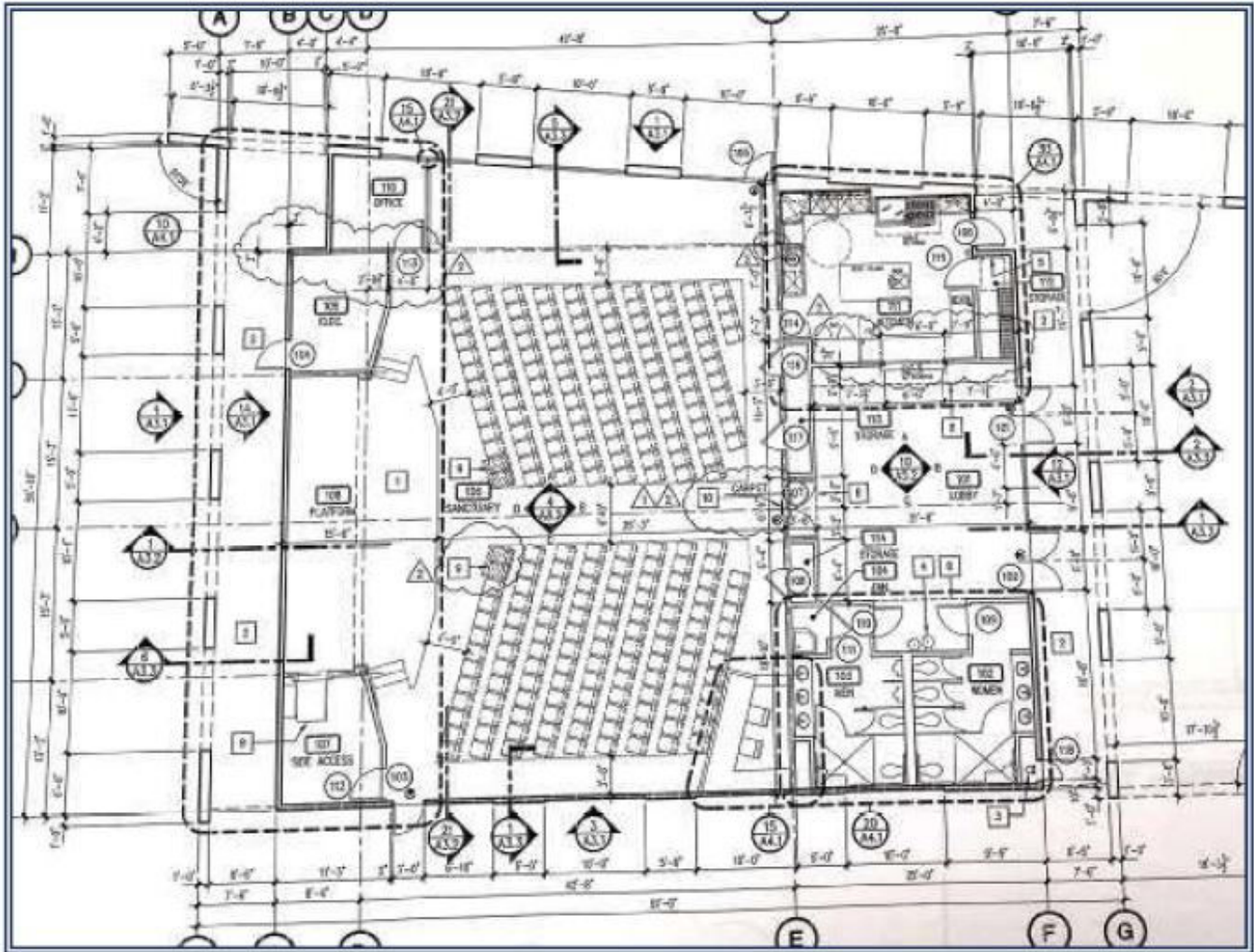
**NAI Capital**  
COMMERCIAL REAL ESTATE SERVICES, WORLDWIDE

# FOR LEASE

4,864 SF RELIGIOUS FACILITY WITH +/-120 PARKING SPACES

**30605 Avenida de las Flores**  
Rancho Santa Margarita, CA 92688

## FLOOR PLAN



Listing  
Agents

**Brian Childs**  
Executive Managing Director  
949.468.2309  
bchilds@naicapital.com  
CA BRE Lic. #00893394

**David Knowlton SIOR, CCIM**  
Executive Vice President  
949.468.2307  
dknowlton@naicapital.com  
CA BRE Lic. #00893394

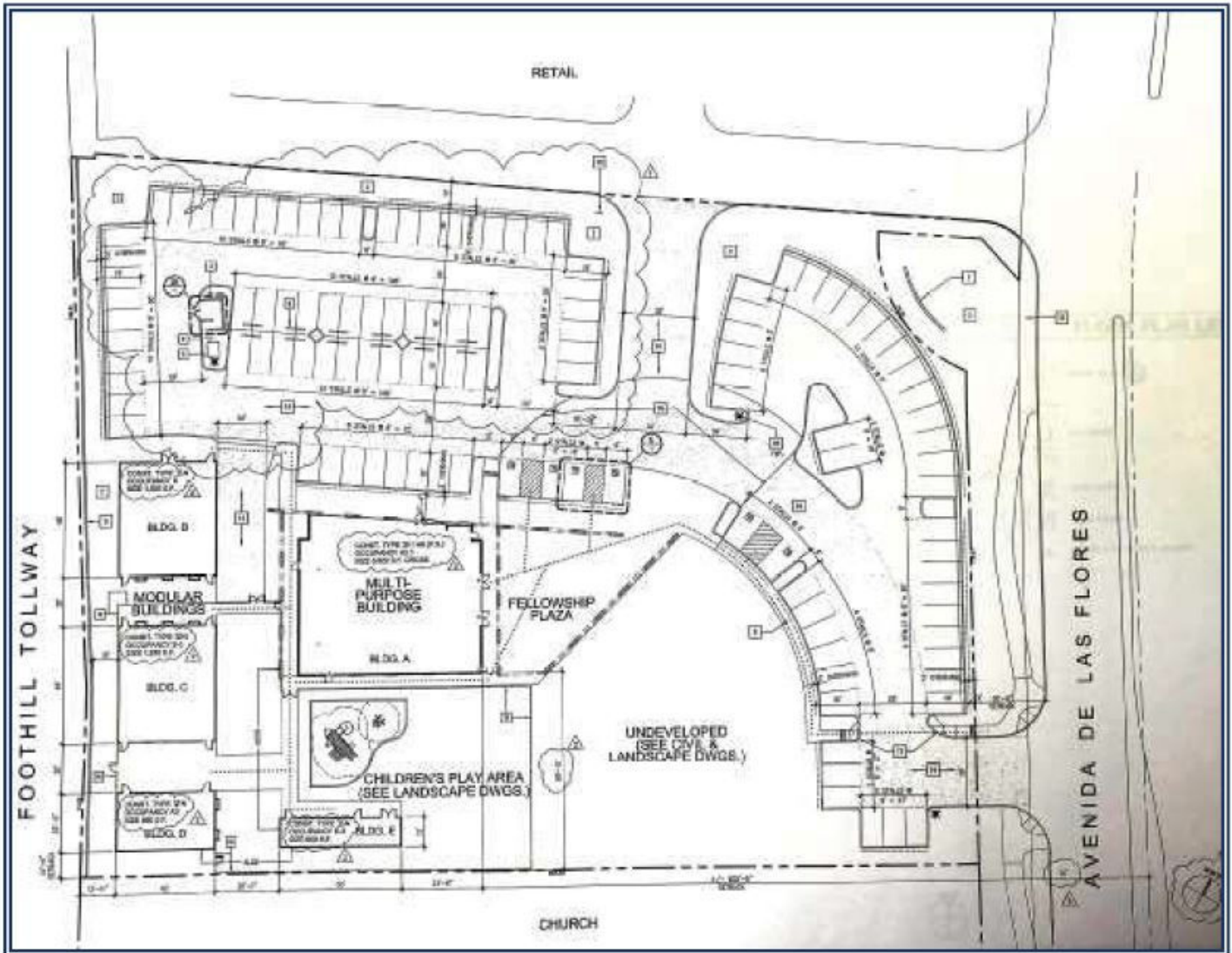
**NAI Capital**  
COMMERCIAL REAL ESTATE SERVICES, WORLDWIDE

# FOR LEASE

4,864 SF RELIGIOUS FACILITY WITH 25:1,000 PARKING

**30605 Avenida de las Flores**  
Rancho Santa Margarita, CA 92688

## SITE PLAN



Listing  
Agents

**Brian Childs**  
Executive Managing Director  
949.468.2309  
bchilds@naicapital.com  
CA BRE Lic. #00893394

**David Knowlton SIOR, CCIM**  
Executive Vice President  
949.468.2307  
dknowlton@naicapital.com  
CA BRE Lic. #00893394

**NAI Capital**  
COMMERCIAL REAL ESTATE SERVICES, WORLDWIDE

# FOR LEASE

4,864 SF RELIGIOUS FACILITY WITH +/-120 PARKING SPACES

**30605 Avenida de las Flores**  
Rancho Santa Margarita, CA 92688

## DEMOGRAPHICS

### Population

	1 Mile	3 Mile	5 Mile
2024 Estimated Population	13,818	80,796	176,146
2029 Projected Population	13,219	77,106	169,023
2020 Census Population	13,985	84,160	182,878
2010 Census Population	14,049	83,097	178,983

### Income

	1 Mile	3 Mile	5 Mile
2024 Estimated Household Income: Average	\$156,042	\$196,103	\$191,762
2029 Projected Household Income: Average	\$163,417	\$206,492	\$201,588
2024 Estimated Household Income: Median	\$138,382	\$166,893	\$161,079
2029 Projected Household Income: Median	\$140,998	\$174,286	\$167,608

### Households

	1 Mile	3 Mile	5 Mile
2024 Estimated Households	5,284	30,574	64,437
2024 Average Household Size	3.3	3.3	3.3
2029 Projected Households	5,063	29,284	62,174

Listing  
Agents

**Brian Childs**  
Executive Managing Director  
949.468.2309  
[bchilds@naicapital.com](mailto:bchilds@naicapital.com)  
CA BRE Lic. #00893394

**David Knowlton SIOR, CCIM**  
Executive Vice President  
949.468.2307  
[dknowlton@naicapital.com](mailto:dknowlton@naicapital.com)  
CA BRE Lic. #00893394

**NAI Capital**  
COMMERCIAL REAL ESTATE SERVICES, WORLDWIDE