

Prime Armonk Retail Opportunity

1,450 SF of Open Retail Space Available

Highly visible location on Route 22 off I684 Exit 3

Suitable for a wide range of retail and service uses.

Moderne Barn
Restaurant Center

Retail
Space

430 Bedford Road, Armonk, NY 10504

- Over 16,000+ vehicles daily on Route 22 (high traffic count)
- Excellent visibility
- Existing market build-out with available seating
- 160-car parking
- 24/7 access and HVAC
- Front and rear entrances
- ADA compliant
- Backup generator

This 1,450 SF open space is ideal for medical, boutique retail, wellness, banks, real Estate firms, food and beverage concepts, professional services and more.

Located off exit 3 off I684 on Route 22/
430 Bedford Road with fantastic visibility



HOULIHAN LAWRENCE

399 Main St
Armonk NY 10504



Original open
Space

Contact: For information, pricing or to view property
Call: Bruce Wenig (914)844-2478 Or Email::
Bwenig@houlihanlawrence.com
www.brucewenig.com

The information contained herein has been obtained from sources deemed reliable but has not been verified and no guarantee, warranty or representation, either expressed or implied, is made with respect to such information. Terms of sale or lease and availability are subject to change or withdrawal without notice.

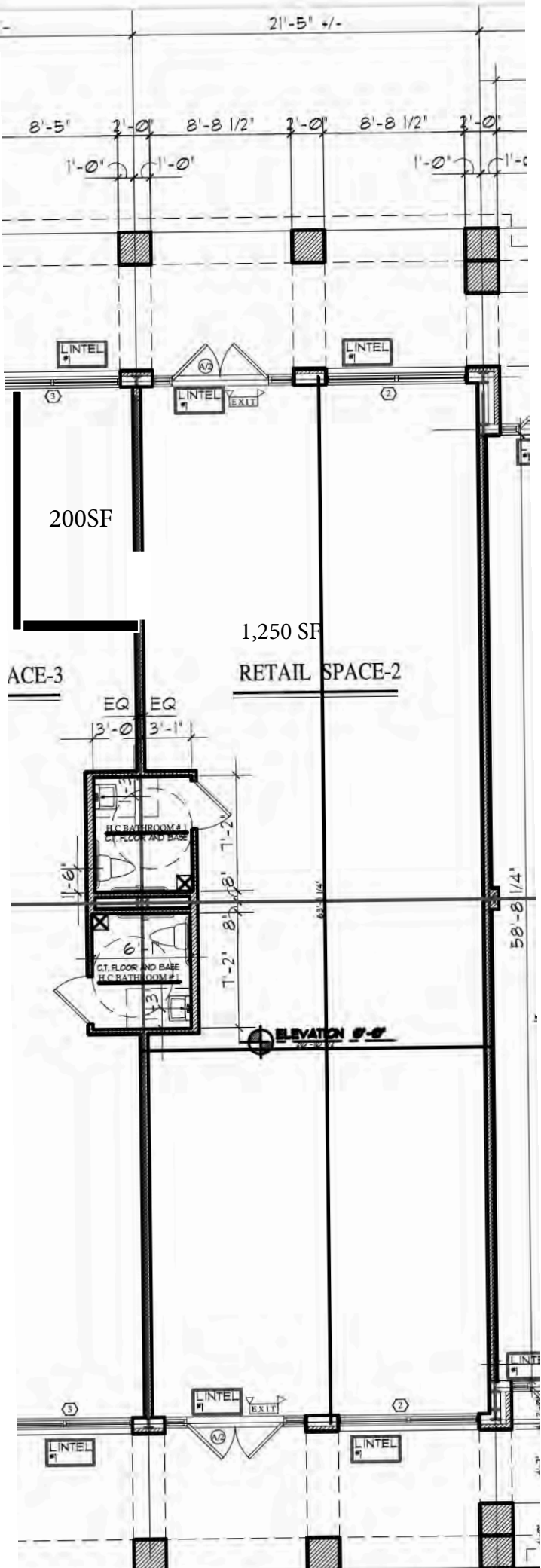
Moderne' Barn
Restaurant
Center

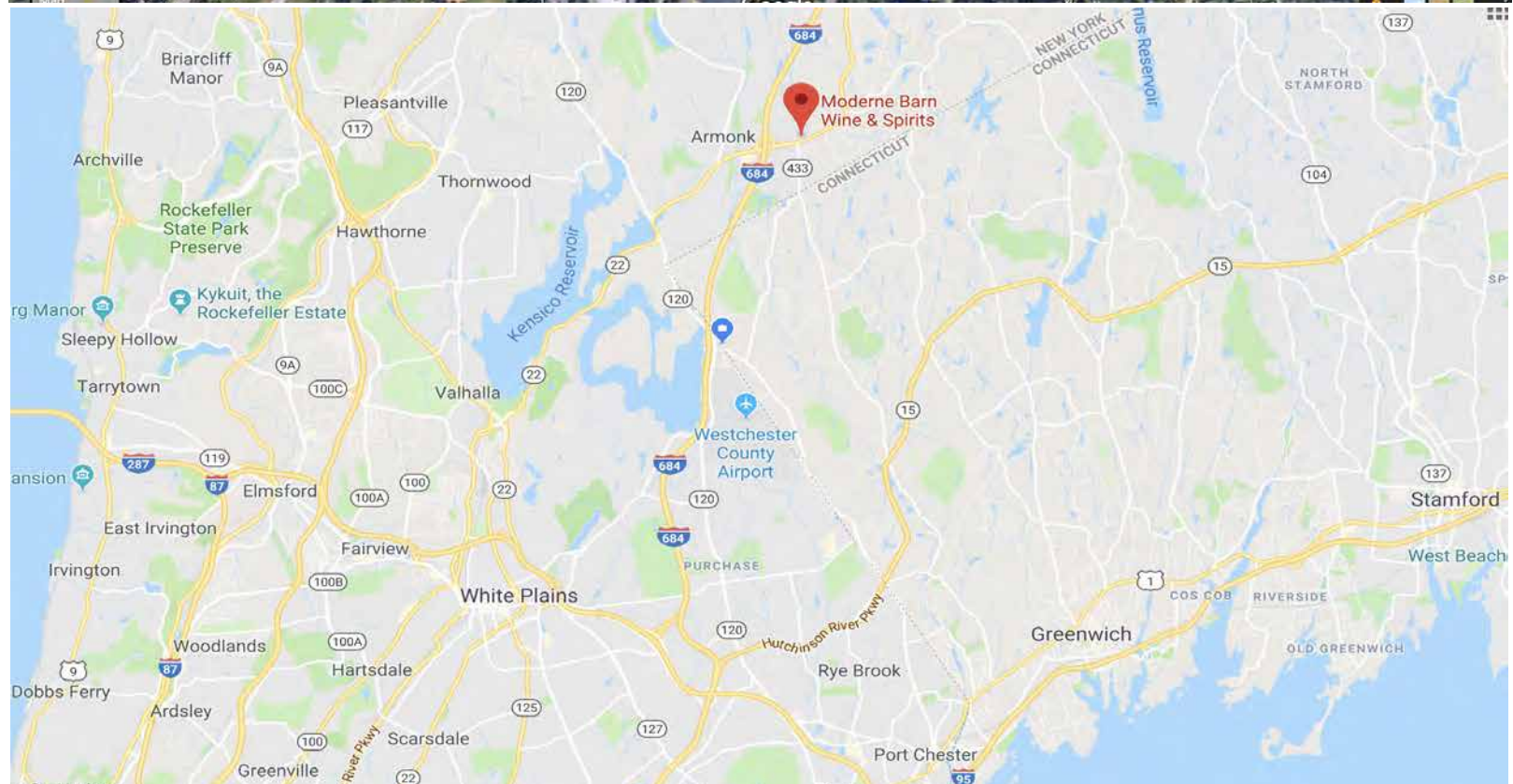






Total
1,450 SF





430 Bedford Road, Armonk NY 10504



HOULIHAN LAWRENCE

**399 Main Street
Armonk NY 10504**

www.brucewenig.com

**For more information + pricing
or to view this property**

**Call: Bruce Wenig (914) 844-2478 Or
Email: Bwenig@houlihanlawrence.com**