

2005 THIRD AVENUE

BETWEEN 110TH & 111TH STREETS | EAST HARLEM

23,000 SF
OF RETAIL SPACE
AVAILABLE



2005 THIRD AVENUE

PROPERTY HIGHLIGHTS:

- Impressive ground floor space with cellar
- Gas and venting (Black Iron Duct) accessible to all retail spaces
- Electrical service: 600A per retail space
- Neighboring tenants include: *McDonald's, Burger King, USPS, Rainbow, Chase Bank, Papa John's, Gamestop, Duane Reade, Success Academy Charter School, Wendy's, Esperanza Preparatory Academy, Tag Young Scholars School, Luis Munoz Rivera School*

SIZE:

Retail:	23,133 SF (Approx.)
Ground Floor:	11,500 SF (Approx.)
Cellar Level:	11,633 SF (Approx.)

FRONTAGE: Over 300' wraparound

CEILING HEIGHT: 21'

POSSESSION: Q2 2025

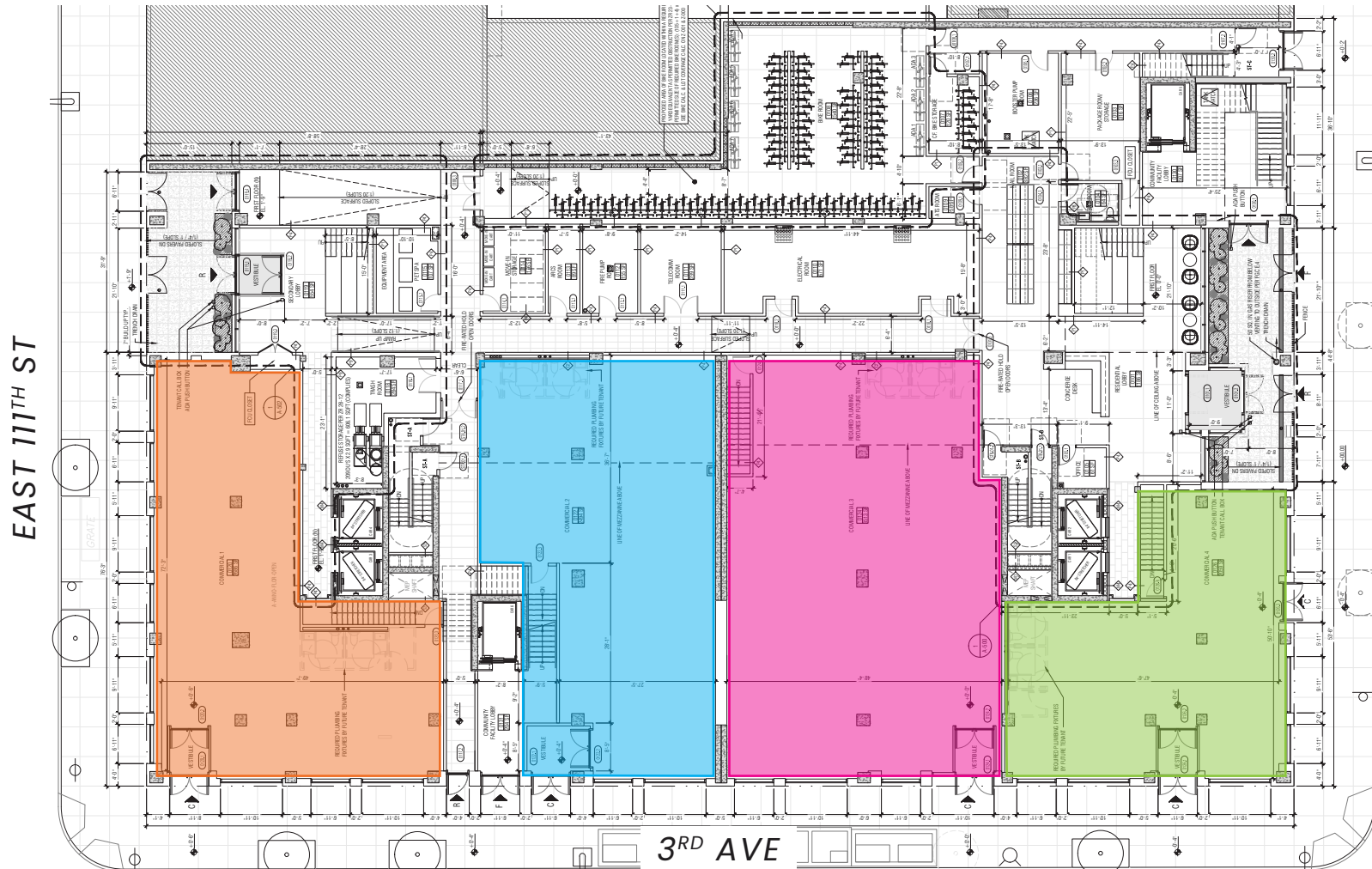
ASKING RENT: Upon Request

TRANSPORTATION: 



2005 THIRD AVENUE

GROUND FLOOR (PROPOSED DIVISIONS)



Space D
2,795 SF

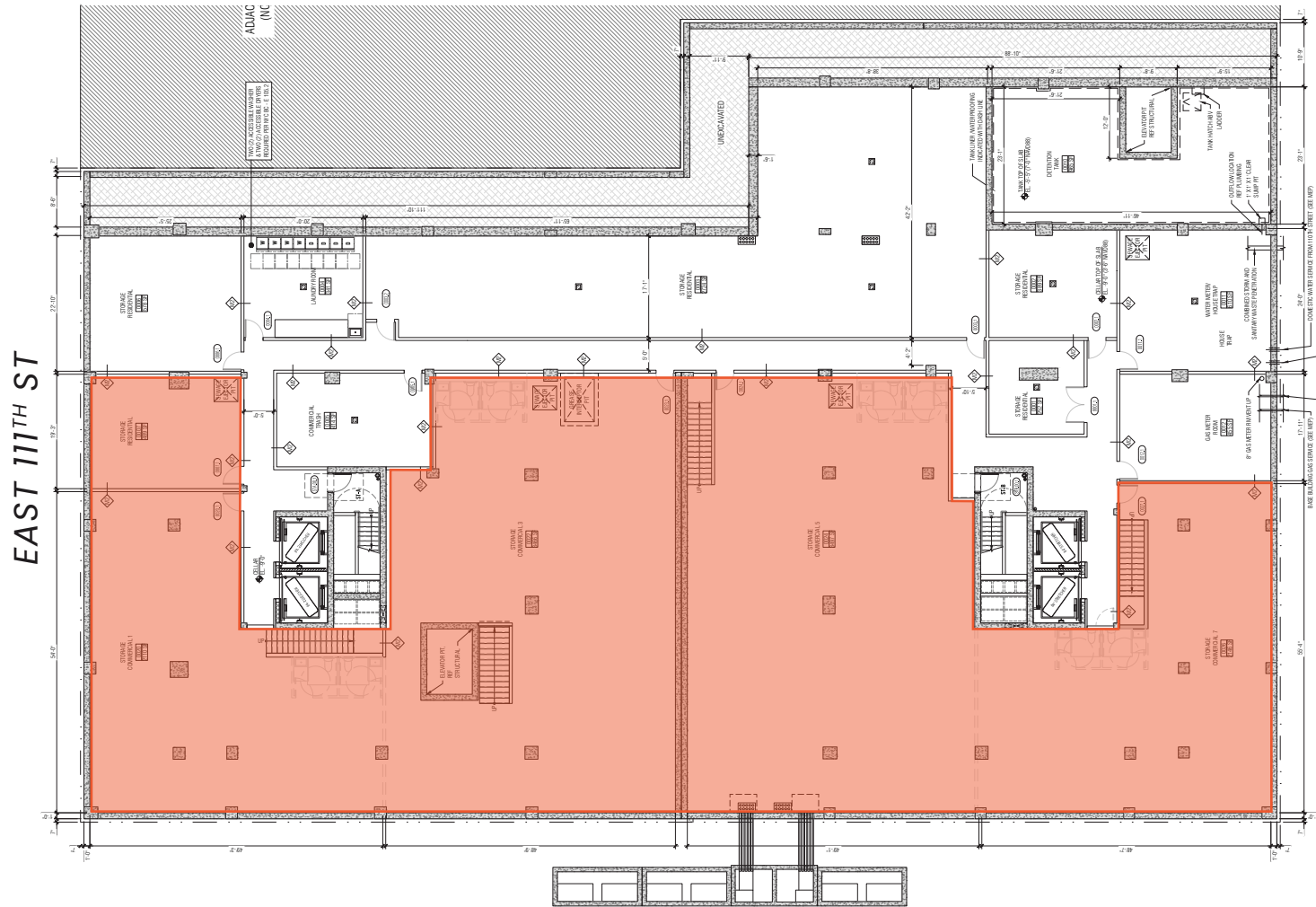
Space C
2,830 SF

Space B
3,653 SF

Space A
2,213 SF



2005 THIRD AVENUE CELLAR



Cellar
11,633 SF (APPROX.)



2005 THIRD AVENUE

CELLAR (PROPOSED DIVISIONS)



Space D
2,686 SF

Space C
2,961 SF

Space B
3,513 SF

Space A
2,059 SF



2005 THIRD AVENUE

AREA DEMOGRAPHICS (1 MILE RADIUS)



TOTAL
POPULATION:
179,913



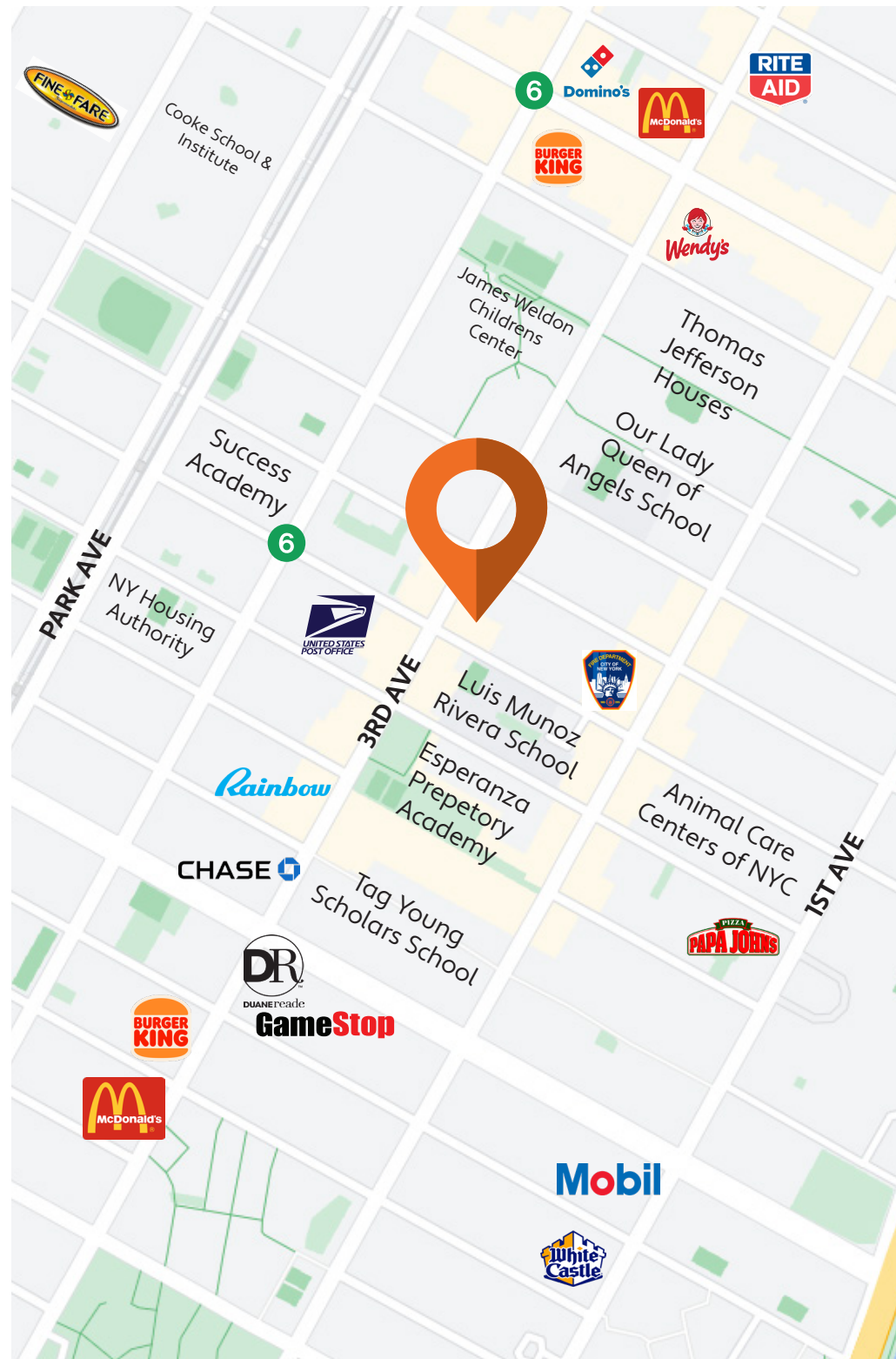
NUMBER OF
HOUSEHOLDS:
69,762



AVG. HOUSEHOLD
INCOME:
\$90,702



TOTAL CONSUMER
SPENDING:
\$1,728,274,624



2005 THIRD AVENUE

EXTERIOR RENDERS



Main Entrance



Corner View



Corner View



All information supplied in this marketing presentation and/or flyer is from sources deemed reliable and is furnished subject to errors, omissions, modifications, removal of listings from sale/lease and to any listing condition. Any square footage, dimensions, floor plans and/or technical data set forth are approximations and are subject to further elaboration/confirmation.

2005 THIRD AVENUE

BETWEEN 110TH & 111TH STREETS | EAST HARLEM

FOR MORE INFORMATION,
PLEASE CONTACT:

ELI YADID

917.770.9173 | EYadid@ksrny.com

RAFI BENOR

347.459.0445 | RBenor@ksrny.com

