



136,218 SF AVAILABLE FOR LEASE

36' CLEAR HEIGHT | ESFR K-25 SPRINKLERS | 3,000 AMPS, 277/480 | 40 TRAILER PARKING STALLS

1500 S. RAYMOND AVENUE

Fullerton, CA | North Orange County





■ FEATURES

- 7.22 acre site
- 101,560 SF concrete yard
- 40 trailer stalls
- 113 parking stalls, expandable to 241
- 16 DH, 1 GL positions — 3 installed pit levelers
- 36' clear height
- ESFR K-25 sprinklers
- 3,000 amp capacity, 277/480V
- Expansive SR-91 freeway frontage

1500 S. Raymond Avenue





■ ESG FEATURES

- HVLS fan and air exchange system reduce effective temperature (up to 11°) and improve air quality
- 60% energy & 75% water savings from efficient building systems and landscaping
- 20 EV charging stalls
- 100% concrete site paving
- Solar-ready roof

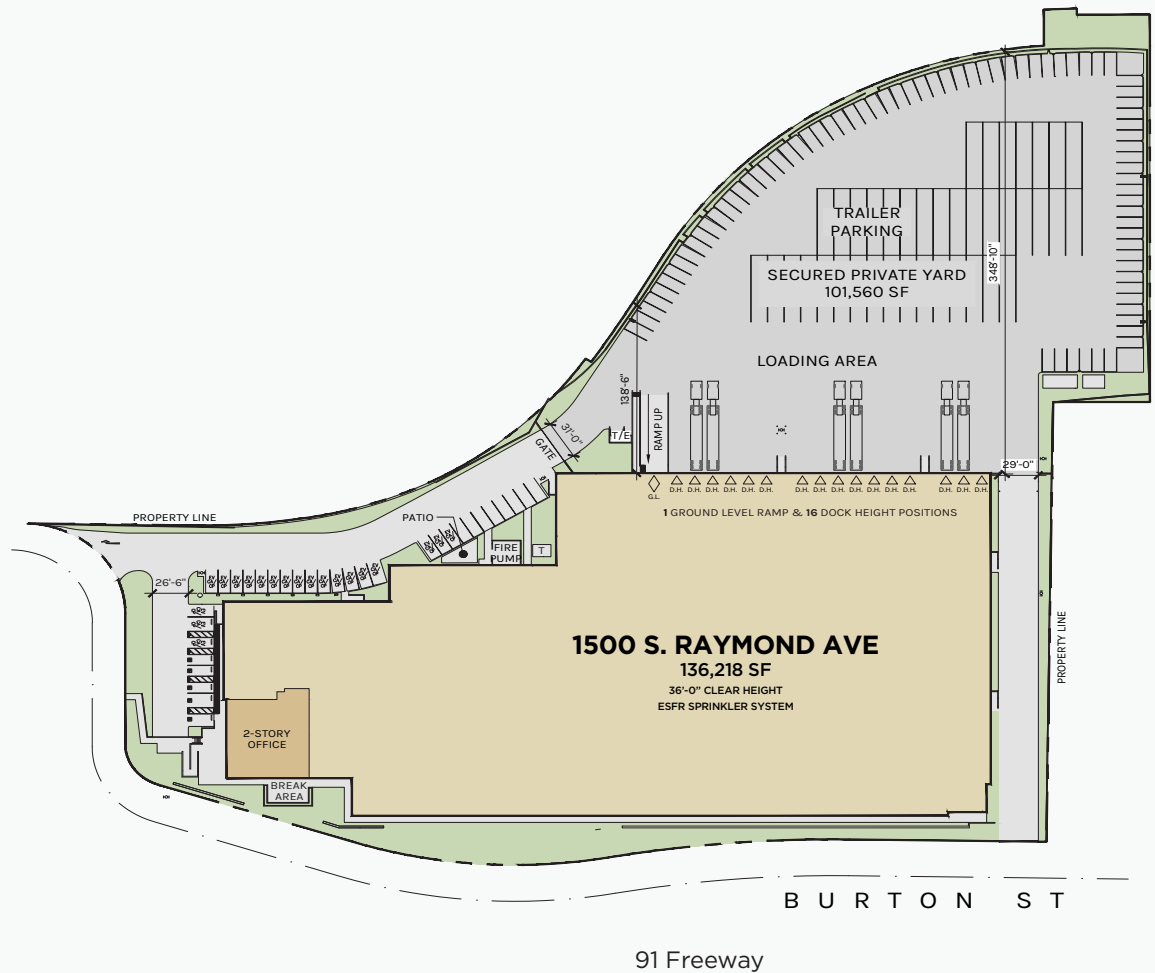


SITE PLAN

128,838 SF
WAREHOUSE

7,380 SF
OFFICE

PLAN LAYOUT IS SUBJECT TO FIELD CONDITIONS AND MAY DIFFER FROM THE PLAN AS SHOWN. ALL INFORMATION PRESENTED IN THIS DRAWING IS PRESUMED TO BE ACCURATE; HOWEVER, TENANT SHOULD VERIFY PERTINENT INFORMATION PRIOR TO COMMITTING TO A LEASE. ANY FURNITURE OR APPLIANCES SHOWN ON THE PLAN ARE FOR CONCEPT ONLY AND WILL BE PROVIDED BY TENANT.



1500 S. Raymond Avenue

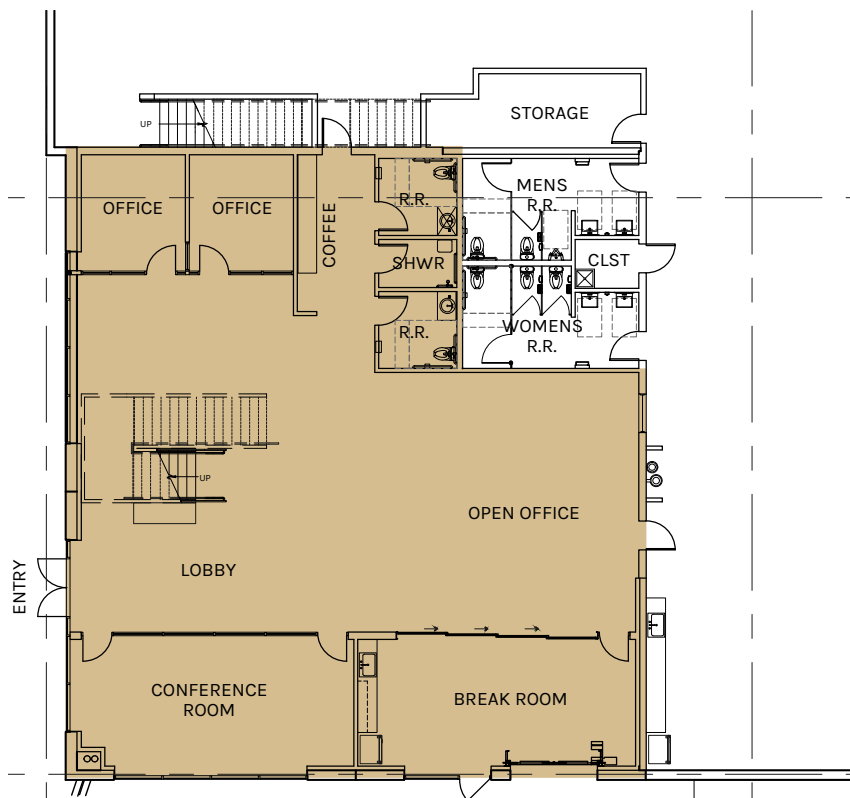


OFFICE FLOOR PLAN

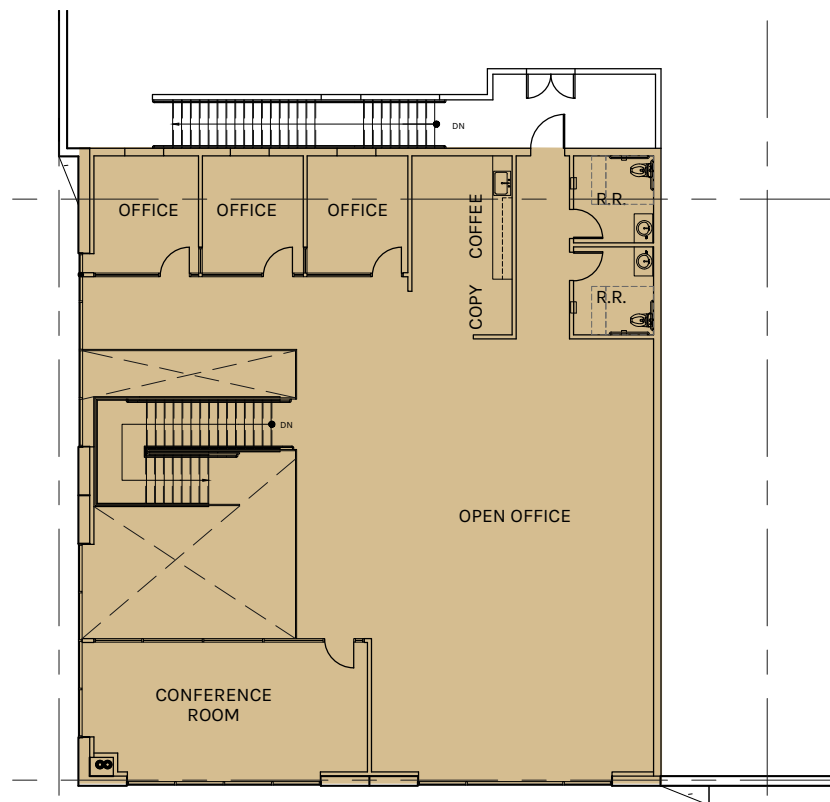
3,896 SF
FIRST FLOOR

3,484 SF
MEZZANINE

PLAN LAYOUT IS SUBJECT TO FIELD CONDITIONS AND MAY DIFFER FROM THE PLAN AS SHOWN. ALL INFORMATION PRESENTED IN THIS DRAWING IS PRESUMED TO BE ACCURATE; HOWEVER, TENANT SHOULD VERIFY PERTINENT INFORMATION PRIOR TO COMMITTING TO A LEASE. ANY FURNITURE OR APPLIANCES SHOWN ON THE PLAN ARE FOR CONCEPT ONLY AND WILL BE PROVIDED BY TENANT.



FIRST FLOOR

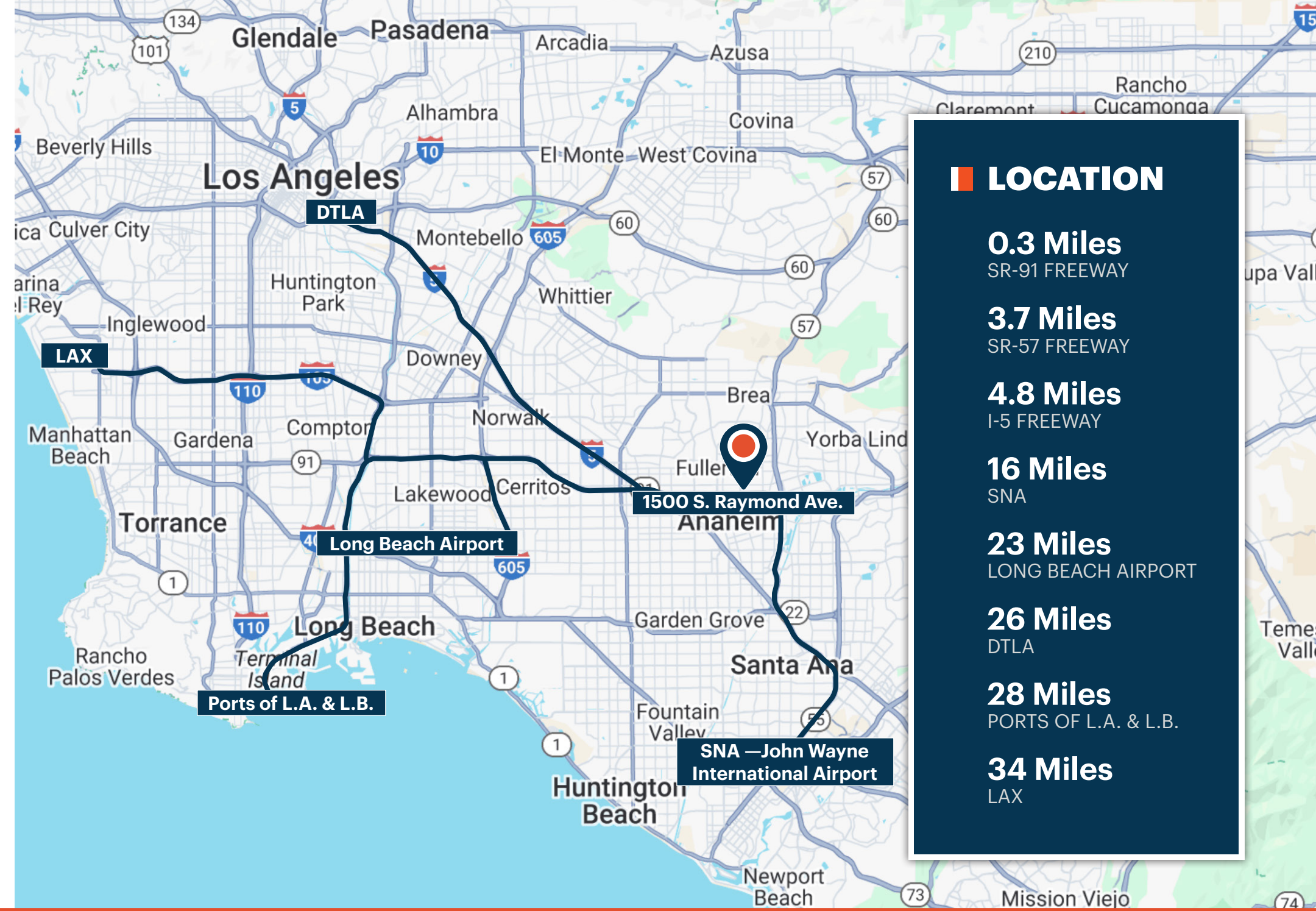


MEZZANINE





1500 S. Raymond Avenue



LOCATION

0.3 Miles
SR-91 FREEWAY

3.7 Miles
SR-57 FREEWAY

4.8 Miles
I-5 FREEWAY

16 Miles
SNA

23 Miles
LONG BEACH AIRPORT

26 Miles
DTLA

28 Miles
PORTS OF L.A. & L.B.

34 Miles
LAX





**Rexford
Industrial**

Leasing Contacts

RANDY ELLISON

Executive Director
949.930.4371
randy.ellison@cushwake.com
CA License # 01469586

BRETT LOCKWOOD

Director
949.930.2481
brett.lockwood@cushwake.com
CA License # 01495872

KYLE MCGILLEN

Senior Director
949.930.9229
kyle.mcgillen@cushwake.com
CA License # 01959388

ANDREW RYAN

Associate
949.336.3484
andrew.ryan@cushwake.com
CA License # 02218585



CUSHMAN & WAKEFIELD

1811 Von Karman Avenue, Suite 1000
Irvine, CA 92612
949.474.4004
cushmanwakefield.com

Broker Disclaimer ©2024 Cushman & Wakefield. All rights reserved. The information contained in this communication is strictly confidential. This information has been obtained from sources believed to be reliable but has not been verified. No warranty or representation, express or implied, is made as to the condition of the property (or properties) referenced herein or as to the accuracy or completeness of the information contained herein, and same is submitted subject to errors, omissions, change of price, rental or other conditions, withdrawal without notice, and to any special listing conditions imposed by the property owner(s). Any projections, opinions or estimates are subject to uncertainty and do not signify current or future property performance.