



**FLEX OFFICE SPACE FOR LEASE**

# **NOVI BUSINESS PARK**

NOVI, MICHIGAN 48375

**LEASING CONTACT**

**TRANSWESTERN**

248.350.22226

3000 Town Center

Suite 2500

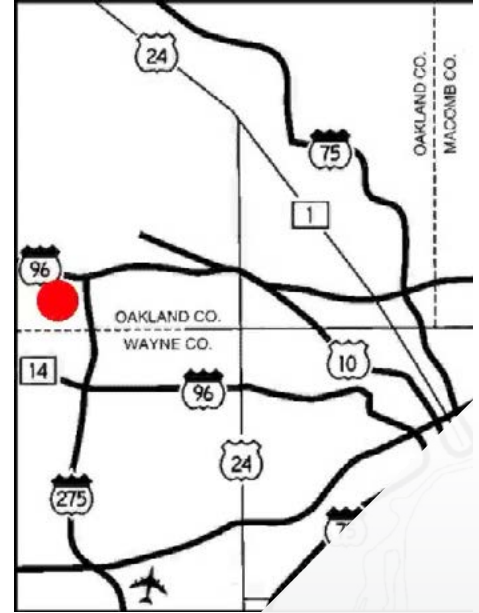
Southfield, MI 48075



FLEX OFFICE SPACE FOR LEASE

# NOVI BUSINESS PARK

41441-41541 W 11 MILE ROAD - BUILDING 1 | NOVI, MI 48375



## AMENITIES

- Natural Wooded Setting
- Access to I-696, I-275, M-5
- Detroit Metro Airport <25 minutes

## AVAILABILITIES

- Office Space 2,668 SF
- Office Space 19,374 SF

## BUILDING SPECS

- Subtype Light Manufacturing
- Office Space Available
- Individual Entrances
- Full Fire Supression
- 16' Ceiling Height
- Drive-In 10'Wx12'H
- Parking Ratio 5.29:1,000



**CONTACT**  
**BILL HARVEY**  
248.797.9455

[bill.harvey@transwestern.com](mailto:bill.harvey@transwestern.com)

**CHARLES HOWARD**  
48.821.7722

[charles.howard@transwestern.com](mailto:charles.howard@transwestern.com)

**TIM JARZEMBOWSKI**  
248.753.4750

[tim.jarzembowski@transwestern.com](mailto:tim.jarzembowski@transwestern.com)

The information provided herein was obtained from sources believed reliable; however, Transwestern makes no guarantees, warranties or representations as to the completeness or accuracy thereof. The presentation of this property is submitted subject to errors, omissions, change of price or conditions, prior sale or lease, or withdrawal without notice. Copyright © 2018 Transwestern.

FLEX OFFICE SPACE FOR LEASE

# NOVI BUSINESS PARK

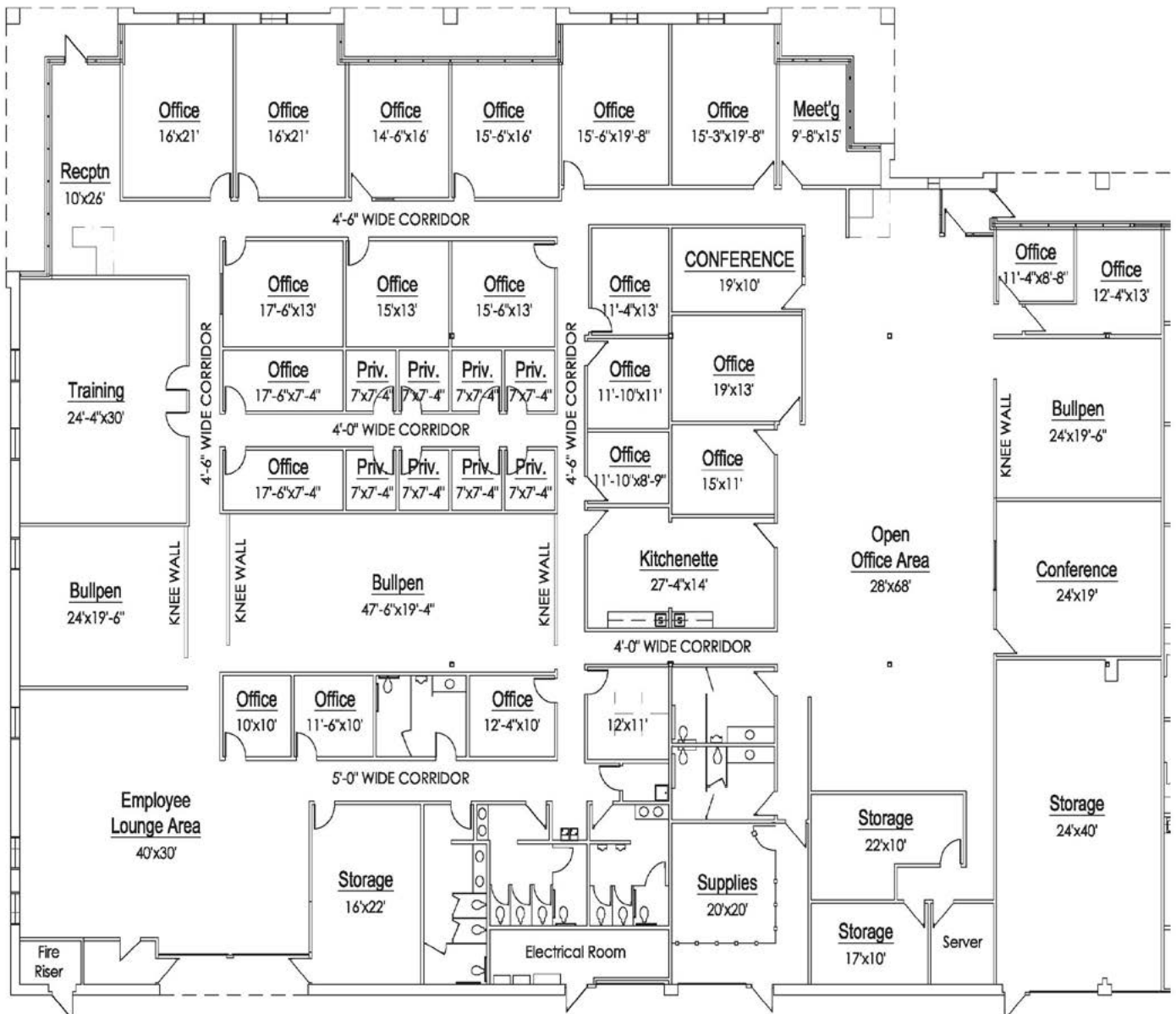
41441 -41541 W 11 MILE ROAD - BUILDING 1 | NOVI, MI 48375

3000 Town Center  
Suite 2500  
Southfield, MI 48075

T 248.350.222  
transwestern.com

## FLOOR PLAN

SUITE 41521: 19,374 SF



## CONTACT

**BILL HARVEY**  
248.797.9455

bill.harvey@transwestern.com

**CHARLES HOWARD**  
48.821.7722

charles.howard@transwestern.com

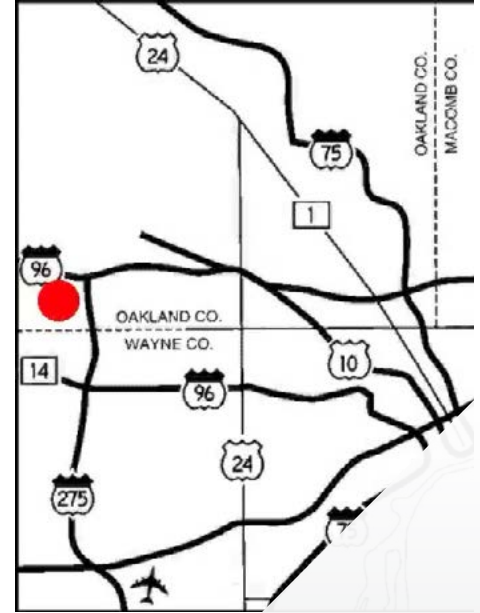
**TIM JARZEMBOWSKI**  
248.753.4750

tim.jarzembowski@transwestern.com

FLEX OFFICE SPACE FOR LEASE

# NOVI BUSINESS PARK

41551-41651 W 11 MILE ROAD - BUILDING 2 | NOVI, MI 48375



## AMENITIES

- Natural Wooded Setting
- Access to I-696, I-275, M-5
- Detroit Metro Airport < 25 minutes

## AVAILABILITIES

- Office Space 11,214 SF

## BUILDING SPECS

- Subtype Light Manufacturing
- Office Space Available
- Individual Entrances
- Full Fire Suppression
- 16' Ceiling Height
- Drive-In 10'Wx12'H
- Parking Ratio 3.5:1,000



**CONTACT**  
**BILL HARVEY**  
248.797.9455

bill.harvey@transwestern.com

**CHARLES HOWARD**  
48.821.7722

charles.howard@transwestern.com

**T** **TRANSWESTERN**<sup>®</sup>

**TIM JARZEMBOWSKI**  
248.753.4750

tim.jarzembowski@transwestern.com

The information provided herein was obtained from sources believed reliable; however, Transwestern makes no guarantees, warranties or representations as to the completeness or accuracy thereof. The presentation of this property is submitted subject to errors, omissions, change of price or conditions, prior sale or lease, or withdrawal without notice. Copyright © 2018 Transwestern.

FLEX OFFICE SPACE FOR LEASE

# NOVI BUSINESS PARK

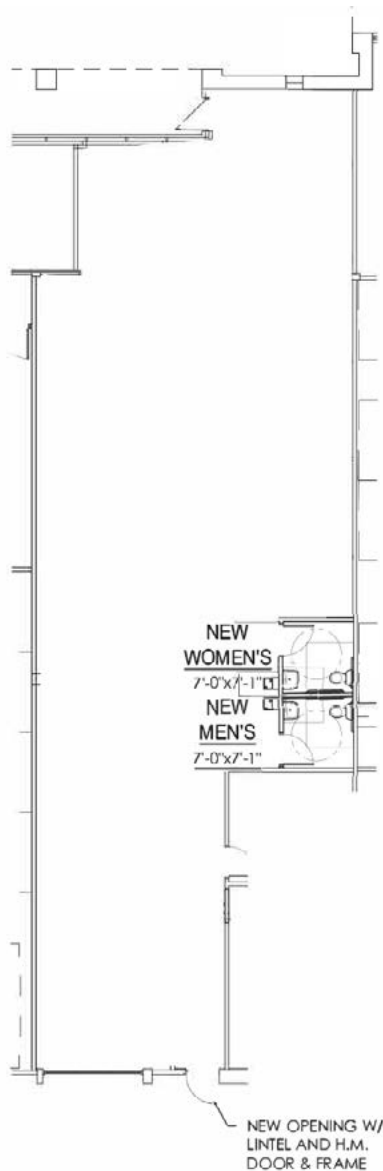
41551-41651 W 11 MILE ROAD - BUILDING 2 | NOVI, MI 48375

3000 Town Center  
Suite 2500  
Southfield, MI 48075

T 248.350.222  
transwestern.com

## FLOOR PLAN

SUITE 41571: 2,668 SF



### CONTACT

**BILL HARVEY**

248.797.9455

bill.harvey@transwestern.com

**CHARLES HOWARD**

48.821.7722

charles.howard@transwestern.com

**TIM JARZEMBOWSKI**

248.753.4750

tim.jarzembowski@transwestern.com

FLEX OFFICE SPACE FOR LEASE

# NOVI BUSINESS PARK

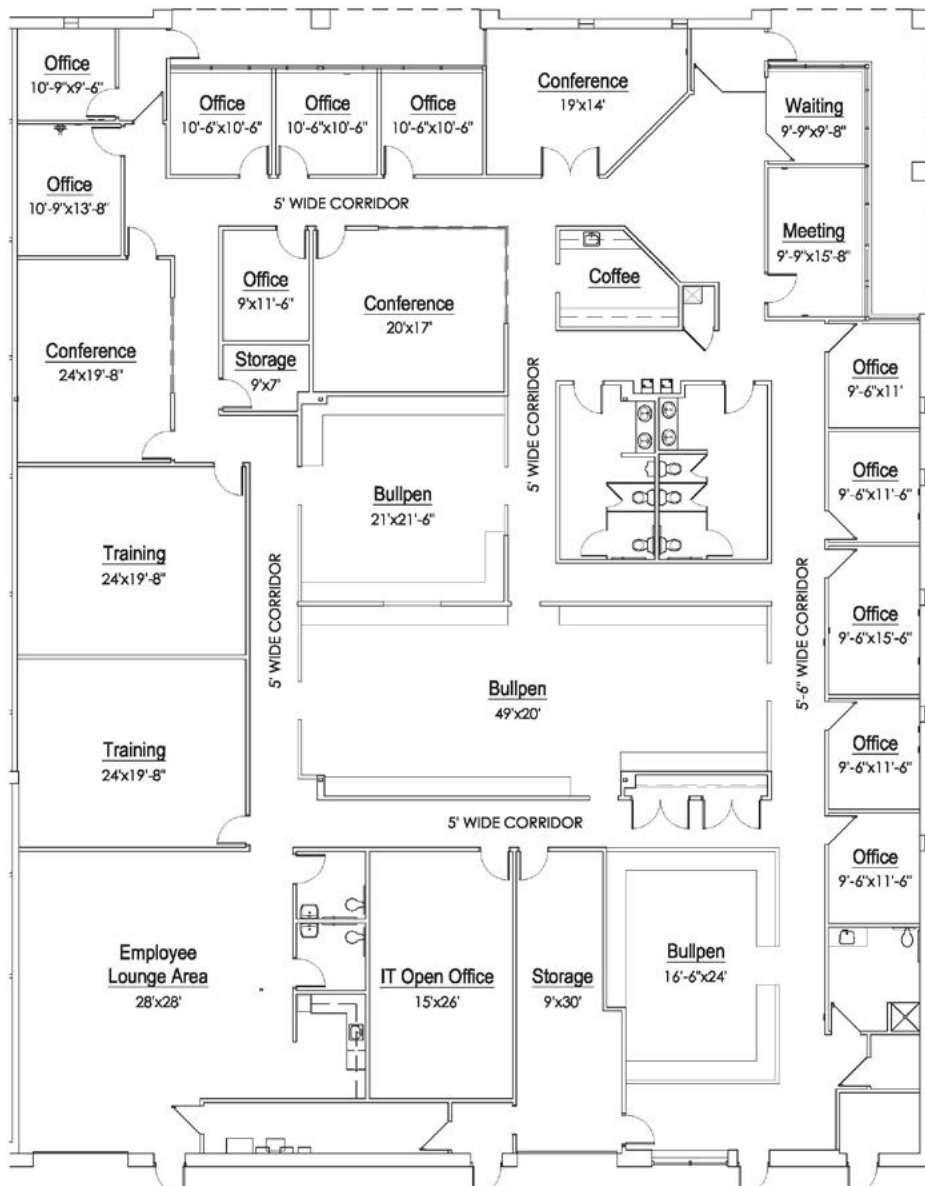
41551-41651 W 11 MILE ROAD - BUILDING 2 | NOVI, MI 48375

3000 Town Center  
Suite 2500  
Southfield, MI 48075

T 248.350.222  
transwestern.com

## FLOOR PLAN

SUITE 41551: 11,214 SF



## CONTACT

**BILL HARVEY**

248.797.9455

bill.harvey@transwestern.com

**CHARLES HOWARD**

48.821.7722

charles.howard@transwestern.com

**TIM JARZEMBOWSKI**

248.753.4750

tim.jarzembowski@transwestern.com

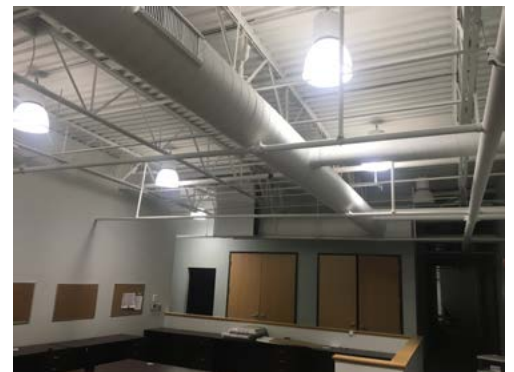
FLEX OFFICE SPACE FOR LEASE

# NOVI BUSINESS PARK

41551-41651 W 11 MILE ROAD - BUILDING 2 | NOVI, MI 48375



**SUITE 41551 (11,214 SF)**



**CONTACT**  
**BILL HARVEY**  
248.797.9455

[bill.harvey@transwestern.com](mailto:bill.harvey@transwestern.com)

**CHARLES HOWARD**  
48.821.7722

[charles.howard@transwestern.com](mailto:charles.howard@transwestern.com)

**T** **TRANSWESTERN**<sup>®</sup>

**TIM JARZEMBOWSKI**  
248.753.4750

[tim.jarzembowski@transwestern.com](mailto:tim.jarzembowski@transwestern.com)

The information provided herein was obtained from sources believed reliable; however, Transwestern makes no guarantees, warranties or representations as to the completeness or accuracy thereof. The presentation of this property is submitted subject to errors, omissions, change of price or conditions, prior sale or lease, or withdrawal without notice. Copyright © 2018 Transwestern.