

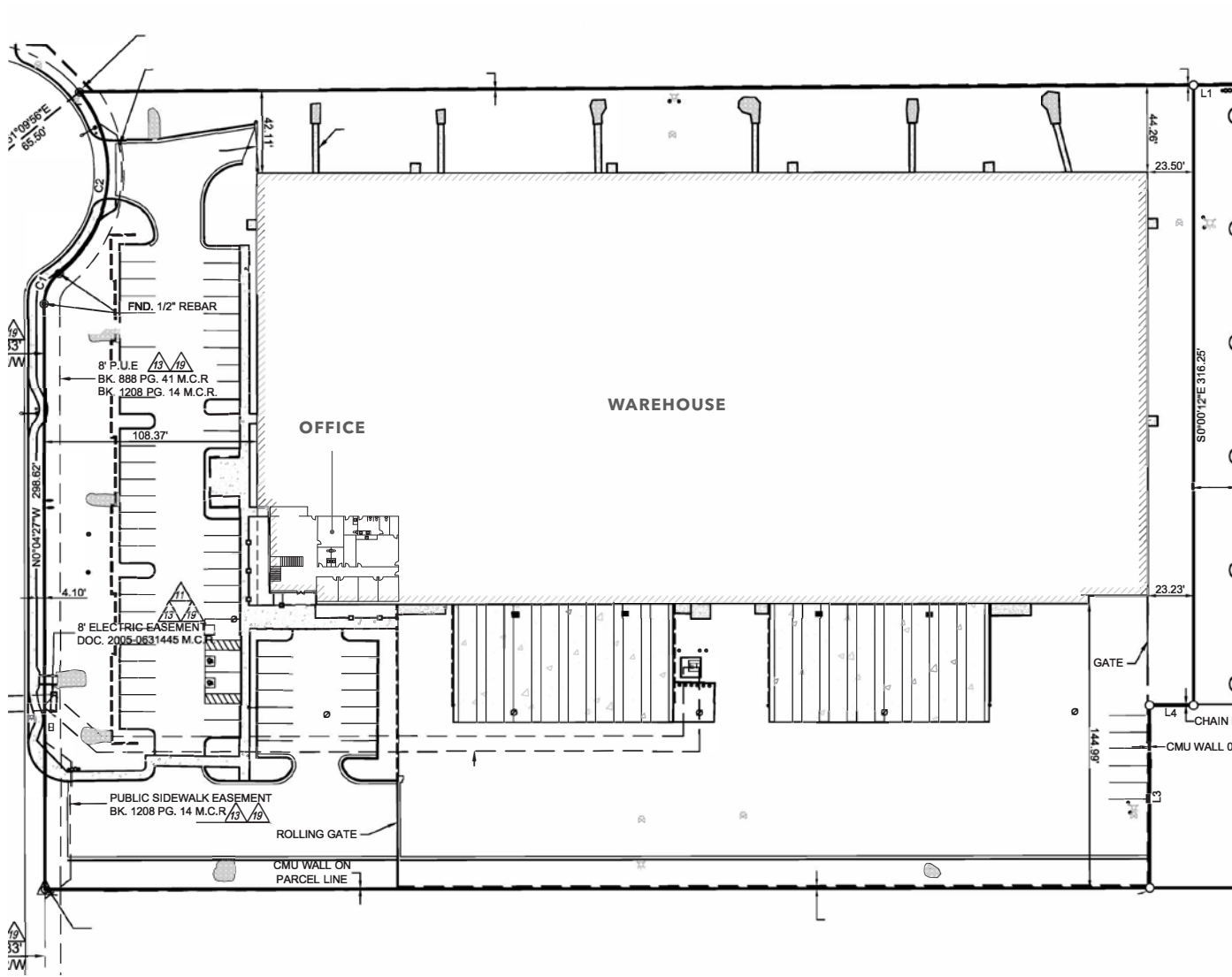
FOR SUBLEASE

# 705 SOUTH 94TH AVENUE

*±100,000 SF Freestanding (Divisible)  
Distribution Building in Tolleson, AZ*



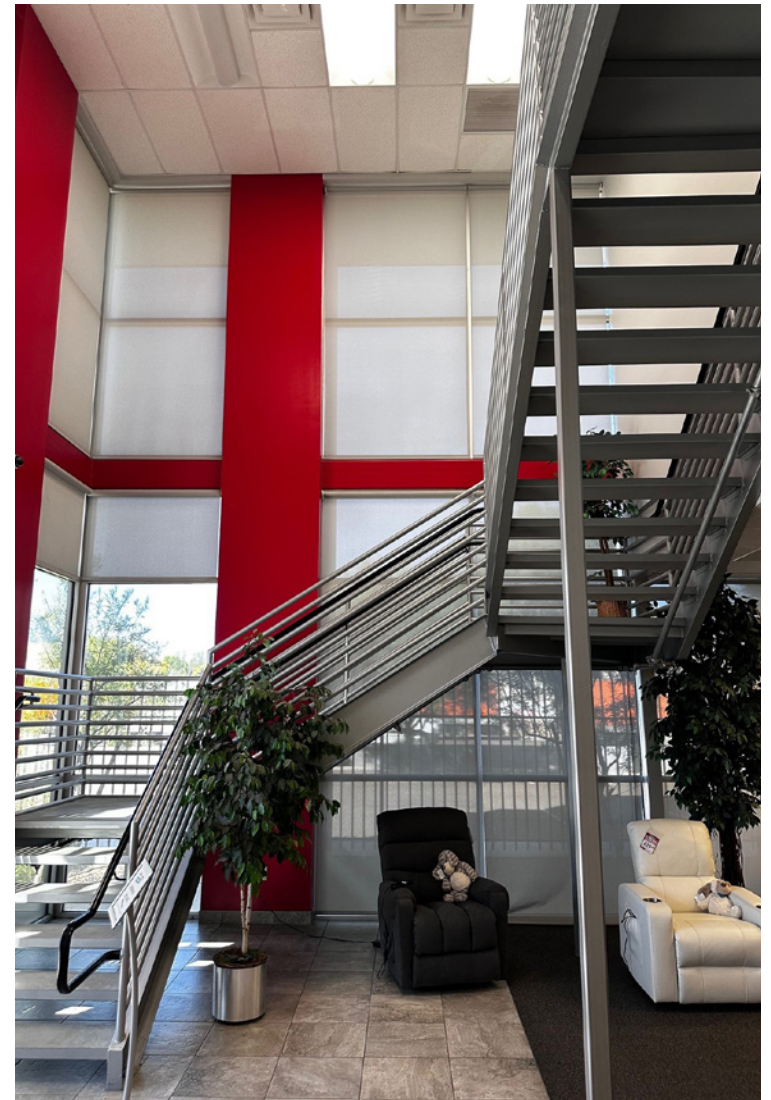
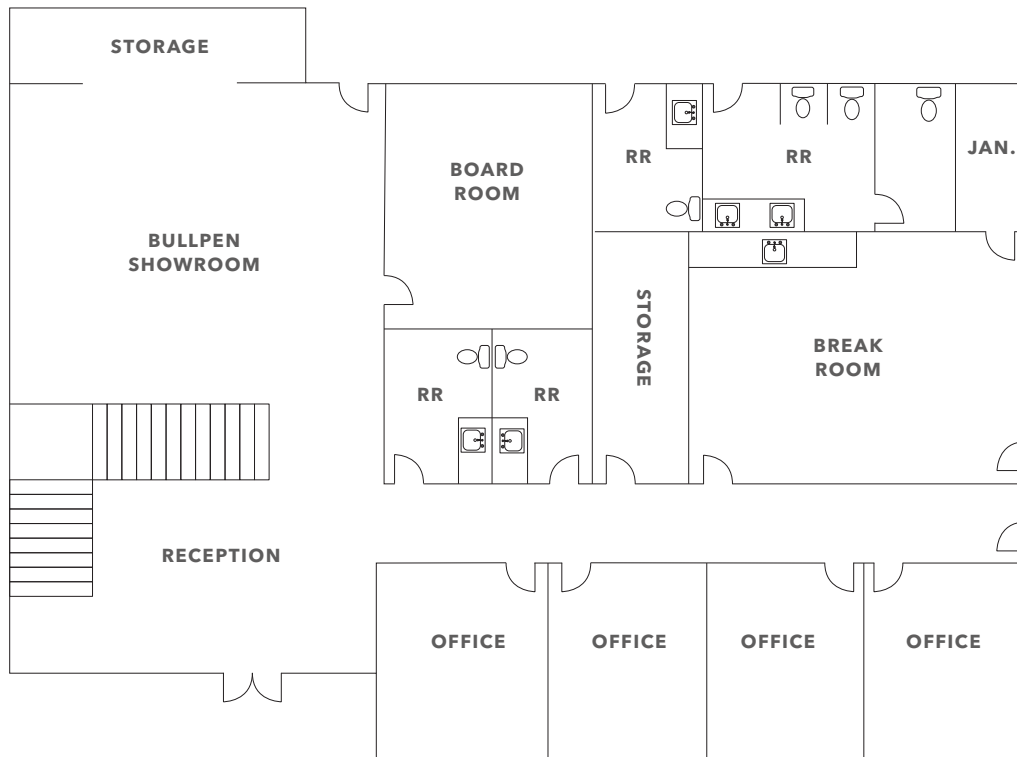
# FLOOR PLAN



220'  
DEPTH

50' X 52'  
COLUMN SPACING

# OFFICE FLOOR PLAN



# *±100,000 SF* FREE STANDING BUILDING

±100,000 SF Freestanding Distribution Building

Divisible to ±50,000 SF

±3,496 Square Feet of Office

±5.38 Acre Parcel

16 Dock-Hi Doors, with in-floor Pit Levelers

2 - 12'x14' Grade-Level roll up Doors

30' Clear Height

277/480v Power

Zoned I-2, City of Tolleson

Shorter Term Available

Contact Broker for Lease Rate





*For more information, contact*

**MIKE CIOSEK, SIOR**  
602.513.5135  
mike.ciosek@kidder.com

**ERIC BELL, SIOR**  
602.513.5151  
eric.bell@kidder.com

**DREW EISEN**  
602.513.5174  
drew.eisen@kidder.com

**KIDDER.COM**

This information supplied herein is from sources we deem reliable. It is provided without any representation, warranty, or guarantee, expressed or implied as to its accuracy. Prospective Buyer or Tenant should conduct an independent investigation and verification of all matters deemed to be material, including, but not limited to, statements of income and expenses. Consult your attorney, accountant, or other professional advisor. All Kidder Mathews designs are the sole property of Kidder Mathews. Branded materials and layouts are not authorized for use by any other firm or person.

