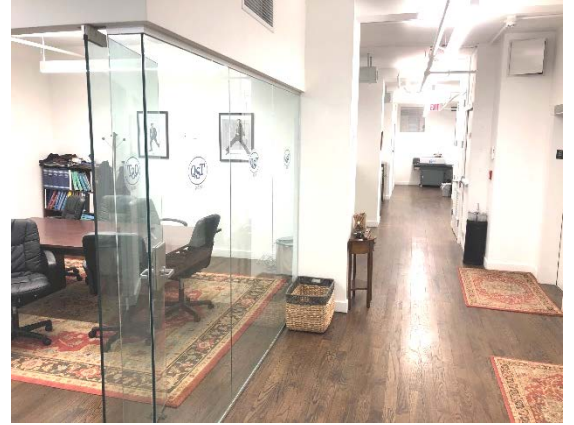


**FOR LEASE - MODERN, BUILT OFFICE**



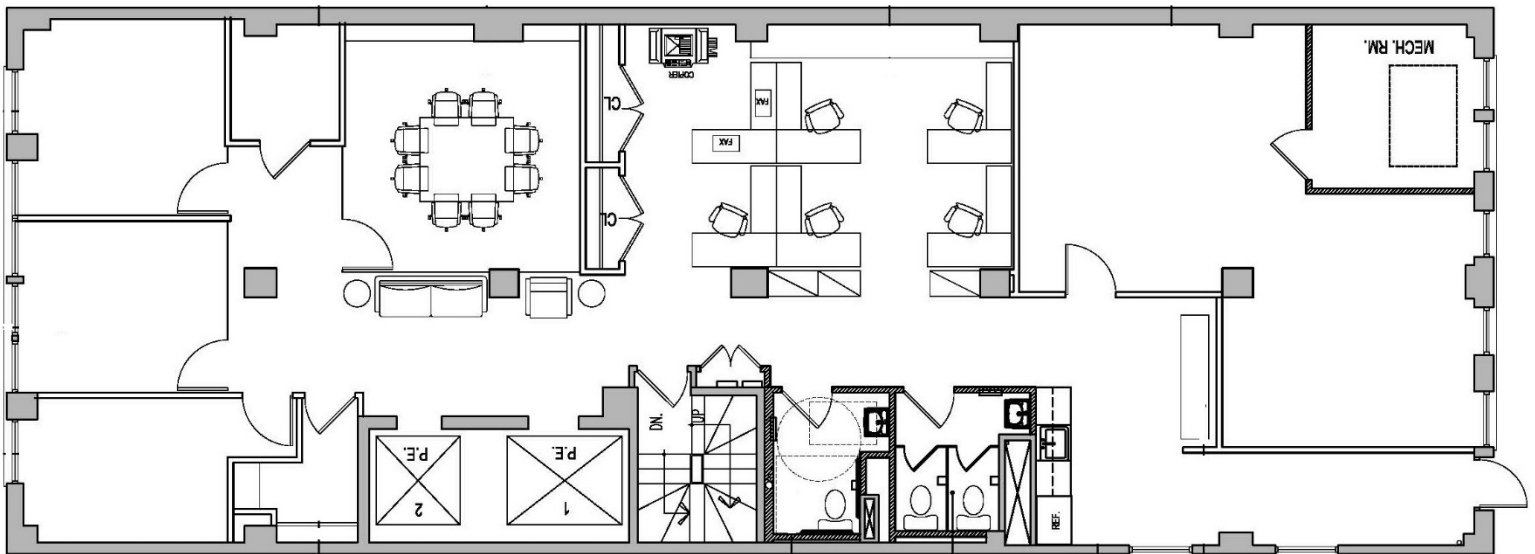
**MIDTOWN SOUTH FULL FLOOR**  
**8 WEST 36<sup>th</sup> STREET**  
**Entire 6<sup>th</sup> Floor - 3,460 RSF**



24/7 SECURE ACCESS  
2 NEW ELEVATORS  
DIRECT ELECTRIC METER  
EXPOSED 11 FOOT CEILING  
UPDATED LOBBY & ENTRANCE  
HIGH-SPEED INTERNET: WIREScore SILVER

NEW, MODERN OFFICE INSTALLATION  
FURNISHED or UNFURNISHED  
2 PRIVATE BATHROOMS, WET PANTRY  
TENANT-CONTROLLED AC  
HARDWOOD FLOORS  
GLASS PARTITIONS, IT ROOM

Near: Grand Central, Penn Station, Bryant Park, Empire State Building  
CONVENIENT SUBWAY ACCESS: N, R, Q, M, 6, 7



**WILLIAM BECKER**  
718.482.0700 x135  
bill@fpr.nyc

**EXCLUSIVE AGENTS:**  
**Full Commissions Paid**

**DAVID DYNAK**  
718.482.0700 x191  
david@fpr.nyc

Information contained herein is from sources deemed reliable but is subject to errors, omissions, change of price or term, and withdrawal without prior notice at any time.