

Consultants:

Owner:
FIRST WILSHIRE PARTNERS, LLC
11645 WILSHIRE BLVD.,
SUITE 1070
LOS ANGELES, CA 90025

Project:
TENANT IMPROVEMENTS FOR:
DONOREG BANK

Address:
1127 WILSHIRE BLVD.,
SUITE 1414, LOS ANGELES
CA 90017

Date:
12-27-2005

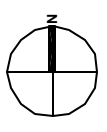
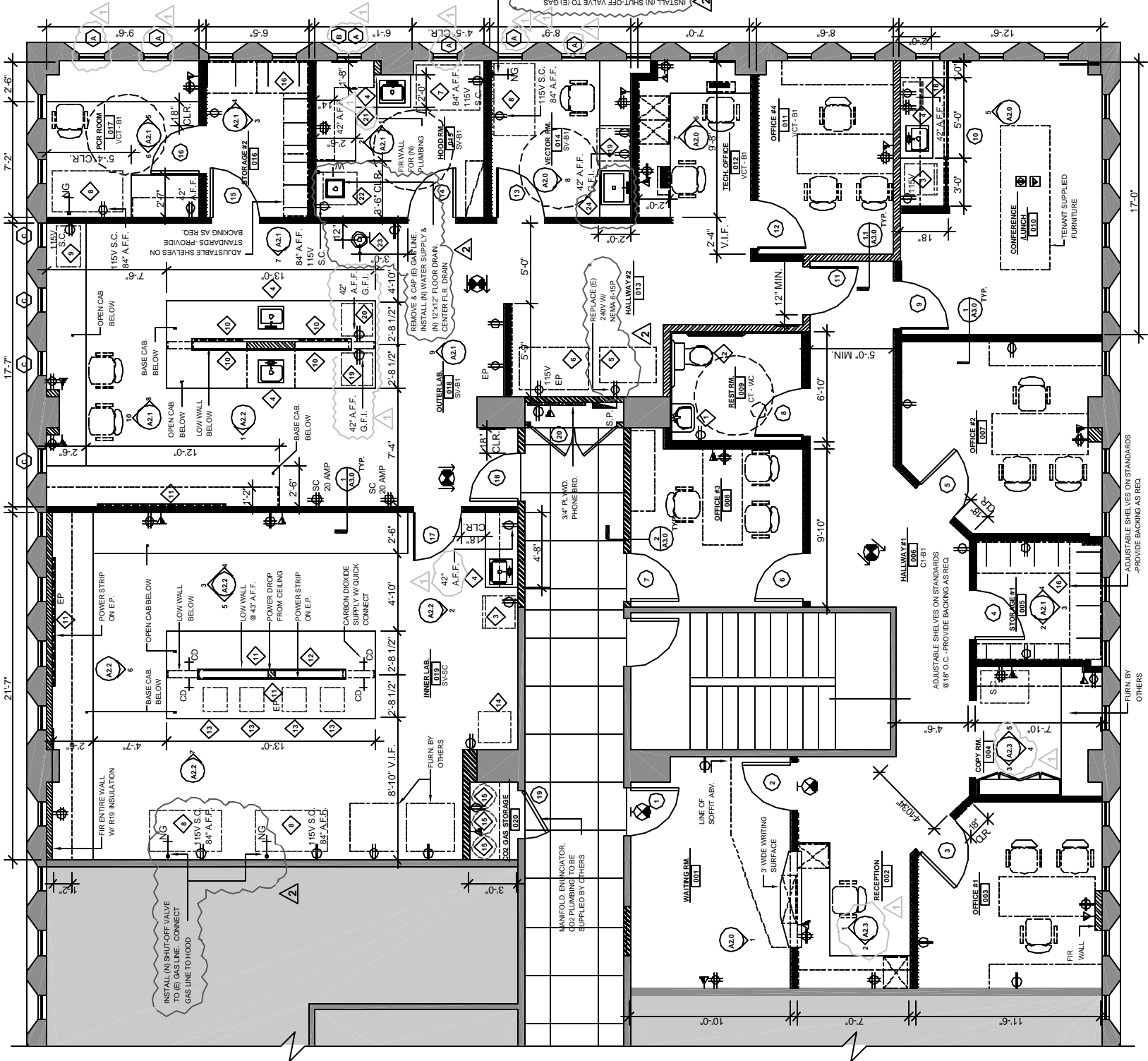
Revisions:
02/10/2006 - CLIENT
ORIGINATED CHANGES
04/22/2008 - CLIENT
ORIGINATED CHANGES

Sheet Title:
CONSTRUCTION PLAN
/ DOOR & WINDOW SCHEDULES
/ EQUIPMENT & FIXTURE SCHD.

Scale:
1/4" = 1'-0"

Sheet:

A1.0



1 CONSTRUCTION PLAN
SCALE: 1/4" = 1'-0"

MATERIAL KEY

FLOORING:	BASE
1	RUBBER BASE
2	CERAMIC TILE FLOORING
3	4" SELF COLE
SV	SHEET VINYL WITH WELDED SEAMS
VCT	VINYL COMPOSITE TILE

WINDOW SCHEDULE

MARK	SIZE	FRAME	FINISH	GLAZING	REMARKS
1	30" X 60"	ALUMINUM	BRUSHED CHROME	1/2" CLEAR	
2	30" X 70"	ALUMINUM	BRUSHED CHROME	1/2" CLEAR	
3	30" X 70"	ALUMINUM	BRUSHED CHROME	1/2" CLEAR	
4	30" X 70"	ALUMINUM	BRUSHED CHROME	1/2" CLEAR	
5	30" X 70"	ALUMINUM	BRUSHED CHROME	1/2" CLEAR	
6	30" X 70"	ALUMINUM	BRUSHED CHROME	1/2" CLEAR	
7	30" X 70"	ALUMINUM	BRUSHED CHROME	1/2" CLEAR	
8	30" X 70"	ALUMINUM	BRUSHED CHROME	1/2" CLEAR	
9	30" X 70"	ALUMINUM	BRUSHED CHROME	1/2" CLEAR	
10	30" X 70"	ALUMINUM	BRUSHED CHROME	1/2" CLEAR	
11	30" X 70"	ALUMINUM	BRUSHED CHROME	1/2" CLEAR	
12	30" X 70"	ALUMINUM	BRUSHED CHROME	1/2" CLEAR	
13	30" X 70"	ALUMINUM	BRUSHED CHROME	1/2" CLEAR	
14	30" X 70"	ALUMINUM	BRUSHED CHROME	1/2" CLEAR	
15	30" X 70"	ALUMINUM	BRUSHED CHROME	1/2" CLEAR	
16	30" X 70"	ALUMINUM	BRUSHED CHROME	1/2" CLEAR	
17	30" X 70"	ALUMINUM	BRUSHED CHROME	1/2" CLEAR	
18	30" X 70"	ALUMINUM	BRUSHED CHROME	1/2" CLEAR	
19	30" X 70"	ALUMINUM	BRUSHED CHROME	1/2" CLEAR	
20	30" X 70"	ALUMINUM	BRUSHED CHROME	1/2" CLEAR	

FIXTURE/EQUIPMENT SCHEDULE

MARK	ROOM NO.	ITEM	WxD x H	MANUFACTURER/CATALOG NO.	QUANTITY	POWER REQS.	REMARKS
1	009	WALL HANG SINK		AMERICAN STANDARD 0396.621	1	N/A	ADA COMPLIANT. PROVIDE BACKING.
2	009	TOILET		AMERICAN STANDARD 2488.100	1	N/A	ADA COMPLIANT. POWER FLUSH.
3	010	REFRIGERATOR		KITCHENAID KTRP18KWH	1	115V, 15 AMP GROUNDING	TENANT TO SUPPLY, CONFIRM REQ.
4	010	STAINLESS STEEL SINK	18" x 17" x 6"	ELAY - PS18R18Z W/ LC2432BH	5	N/A	G.C. TO SUPPLY & INSTALL.
5	010	W/ COINTEGRATOR		SOLOVIM MODEL 108-22	1	220V/60/1EP	TENANT TO PROVIDE HOOKUP AND SEISMIC FLOOR ANCHORAGE. CONFIRM REQ.
6	012	REFRIGERATOR	52" x 31" x 70"	115V/60/1 EP, 10.5, 1/3 AMP	1	115V, 20 AMP	TENANT TO PROVIDE HOOKUP AND SEISMIC FLOOR ANCHORAGE. CONFIRM REQ.
7	015	REFRIGERATOR	58" x 33 1/2" x 68"	CHEMURD-24	1	115V, 20 AMP	TENANT TO PROVIDE HOOKUP AND SEISMIC FLOOR ANCHORAGE. CONFIRM REQ.
8	014, 017, 019	LAMINAR FLOW HOOD	52" x 30" x 18"	STERNGARD III, S6483A	4	115V, 20 AMP	TENANT TO PROVIDE HOOKUP AND SEISMIC FLOOR ANCHORAGE. CONFIRM REQ.
9	018	FRAMING	30" x 18" x 42"	ALBERTSONX-5-30	1	115V, 20 AMP	TENANT TO PROVIDE HOOKUP AND SEISMIC FLOOR ANCHORAGE. CONFIRM REQ.
10	018	FRAMING	30" x 18" x 42"	ALBERTSONX-5-30	1	115V, 20 AMP	TENANT TO PROVIDE HOOKUP AND SEISMIC FLOOR ANCHORAGE. CONFIRM REQ.
11	018	FRAMING	30" x 18" x 42"	ALBERTSONX-5-30	1	115V, 20 AMP	TENANT TO PROVIDE HOOKUP AND SEISMIC FLOOR ANCHORAGE. CONFIRM REQ.
12	018	FRAMING	30" x 18" x 42"	ALBERTSONX-5-30	1	115V, 20 AMP	TENANT TO PROVIDE HOOKUP AND SEISMIC FLOOR ANCHORAGE. CONFIRM REQ.
13	019	INCUBATOR	2' x 2'		1		TENANT TO CONFIRM ALARM REQ.
14	019	AIR PURIFIER	2' x 2'		1		TENANT TO SUPPLY G.C. TO INSTALL CONTINUOUS & PLUMBING TO LAB BENCHES.
15	020	CARBON DIOXIDE			3		TENANT TO SUPPLY G.C. TO INSTALL CONTINUOUS SHEET METAL BACKING @ 80" A.F.F. - SEE ELEV.
16	005, 016	STORAGE SHELVING			2		TENANT TO PROVIDE HOOKUP AND SEISMIC FLOOR ANCHORAGE. CONFIRM REQ.
17	015	LAMINAR FLOW HOOD	36" x 30" x 63"	STERNGARD III ADVANCE	1	115V, 20 AMP	TENANT TO PROVIDE HOOKUP AND SEISMIC FLOOR ANCHORAGE. CONFIRM REQ.
18	010	MICROWAVE		/SG-303 GLASS II	1		TENANT TO SUPPLY, CONFIRM REQ.
19	014, 018	REFRIGERATOR	22" x 24" x 34"	SOLOW AM44RCH	2	115V, 5.3 AMPS	TENANT TO SUPPLY, CONFIRM REQ.
20	018	GLASS FREEZER	22" x 24" x 34"	SOLOW /M23-ALCF	1	115V, 5.3 AMPS	TENANT TO SUPPLY, CONFIRM REQ.
21	015	GLASS TRAP		SCOTT SCIENTIFIC GLASS, INC.	1	N/A	G.C. TO SUPPLY & INSTALL TO SINK #4.
22	015	ICE MACHINE	25" x 24" x 40"	MODEL # 6700	1	15 AMP	G.C. TO SUPPLY & INSTALL. CONFIRM REQ.
23	018	SAFETY SHOWER	12" x 8" x 72"	CHONGFAUCETS 3100-AN	1	N/A	G.C. TO SUPPLY & INSTALL AS VERTICAL SUPPLY FROM ALG. SHOWERHEAD TO BE 8" MIN. CLR. A.F.F. PROVIDE F.R. DRAIN DIRECTLY UNDER SHOWER. G.C. TO SUPPLY & INSTALL. CONFIRM REQ.
24	014	LARGER SINK	25" x 21" x 7"	ELAY - CR221 (3 FAUCET HOLES)	1	N/A	REUSE (E) LK2422BH

DOORS SCHEDULE

MARK	SIZE	DOOR	GLAZING	FINISH	FRAME	FINISH	DOOR FRAME	FRAME FINISH	HARDWARE	REMARKS
1	30" X 60"	S.C.H.D.BD.	N/A	PAINT	BUILDING STANDARD PLASTIC LAMINATE DOOR	BRUSHED CHROME LEVER	STEEL TIMELY	BRUSHED CHROME LEVER	1, 2, 4, 5	(E) 20 MIN. FIRE RATED
2	30" X 70"	FRENCH	PUP STUDIO LAM	REF 5367 (SINGLE LITE)	STEEL TIMELY	BRUSHED CHROME LEVER	STEEL TIMELY	BRUSHED CHROME LEVER	1, 2, 4, 5	
3	30" X 70"	S.C.H.D.BD.	N/A	FACTORY FINISH	STEEL TIMELY	BRUSHED CHROME LEVER	STEEL TIMELY	BRUSHED CHROME LEVER	1, 2, 6	
4	30" X 70"	S.C.H.D.BD.	N/A	FACTORY FINISH	STEEL TIMELY	BRUSHED CHROME LEVER	STEEL TIMELY	BRUSHED CHROME LEVER	1, 2, 6	
5	30" X 70"	S.C.H.D.BD.	N/A	FACTORY FINISH	STEEL TIMELY	BRUSHED CHROME LEVER	STEEL TIMELY	BRUSHED CHROME LEVER	1, 2, 6	
6	30" X 70"	S.C.H.D.BD.	N/A	FACTORY FINISH	STEEL TIMELY	BRUSHED CHROME LEVER	STEEL TIMELY	BRUSHED CHROME LEVER	1, 2, 6	
7	30" X 80"	S.C.H.D.BD.	N/A	FACTORY FINISH	BUILDING STANDARD PLASTIC LAMINATE DOOR	BRUSHED CHROME LEVER	STEEL TIMELY	BRUSHED CHROME LEVER	1, 2, 4, 9	20 MIN. FIRE RATED
8	30" X 70"	S.C.H.D.BD.	N/A	FACTORY FINISH	STEEL TIMELY	BRUSHED CHROME LEVER	STEEL TIMELY	BRUSHED CHROME LEVER	1, 2, 4, 9	
9	30" X 70"	S.C.H.D.BD.	N/A	FACTORY FINISH	STEEL TIMELY	BRUSHED CHROME LEVER	STEEL TIMELY	BRUSHED CHROME LEVER	1, 2, 5	
10	30" X 70"	SLIDING	N/A	FACTORY FINISH	PLASTIC LAMINATE DOOR	BRUSHED CHROME LEVER	STEEL TIMELY	BRUSHED CHROME LEVER	1, 2, 4, 6, 12	60 MIN. FIRE RATED
11	30" X 70"	S.C.H.D.BD.	N/A	FACTORY FINISH	STEEL TIMELY	BRUSHED CHROME LEVER	STEEL TIMELY	BRUSHED CHROME LEVER	1, 2, 6, 12	
12	30" X 70"	S.C.H.D.BD.	N/A	FACTORY FINISH	STEEL TIMELY	BRUSHED CHROME LEVER	STEEL TIMELY	BRUSHED CHROME LEVER	1, 2, 6	
13	30" X 70"	S.C.H.D.BD.	N/A	FACTORY FINISH	STEEL TIMELY	BRUSHED CHROME LEVER	STEEL TIMELY	BRUSHED CHROME LEVER	1, 2, 3, 4, 5, 11	
14	30" X 70"	S.C.H.D.BD.	N/A	FACTORY FINISH	STEEL TIMELY	BRUSHED CHROME LEVER	STEEL TIMELY	BRUSHED CHROME LEVER	1, 2, 5, 11	
15	30" X 70"	S.C.H.D.BD.	N/A	FACTORY FINISH	STEEL TIMELY	BRUSHED CHROME LEVER	STEEL TIMELY	BRUSHED CHROME LEVER	1, 2, 5	
16	30" X 70"	S.C.H.D.BD.	N/A	FACTORY FINISH	STEEL TIMELY	BRUSHED CHROME LEVER	STEEL TIMELY	BRUSHED CHROME LEVER	1, 2, 3, 4, 5, 11	
17	30" X 70"	S.C.H.D.BD.	N/A	FACTORY FINISH	STEEL TIMELY	BRUSHED CHROME LEVER	STEEL TIMELY	BRUSHED CHROME LEVER	1, 2, 3, 4, 5, 11	
18	30" X 80"	S.C.H.D.BD.	N/A	FACTORY FINISH	BUILDING STANDARD PLASTIC LAMINATE DOOR	BRUSHED CHROME LEVER	STEEL TIMELY	BRUSHED CHROME LEVER	1, 2, 4, 9	20 MIN. FIRE RATED
19	30" X 80"	S.C.H.D.BD.	N/A	FACTORY FINISH	BUILDING STANDARD PLASTIC LAMINATE DOOR	BRUSHED CHROME LEVER	STEEL TIMELY	BRUSHED CHROME LEVER	1, 4, 9	60 MIN. FIRE RATED
20	24" X 60"	S.C.H.D.BD.	N/A	FACTORY FINISH	BUILDING STANDARD PLASTIC LAMINATE DOOR	BRUSHED CHROME LEVER	STEEL TIMELY	BRUSHED CHROME LEVER	1, 2, 6, 8, 10	20 MIN. FIRE RATED

NOTES

- HANDACTIVATED DOOR OPENING HARDWARE SHALL BE CENTERED BETWEEN 30" AND 40" A.F.F.
- FLOOR STOPS (ONLY WHEN NEXT TO WALL)
- DOOR CLOSERS - 8001 888 HORTON
- DOOR LOCKS - U.S. LOCK OR CAL ROYAL (LEVER)
- LOCKSET - U.S. LOCK OR CAL ROYAL (LEVER)
- FROM BOTH SIDES
- MAX. EFFORT TO OPERATE DOORS SHALL NOT EXCEED 8 1/2 POUNDS FOR EXTERIOR DOORS AND 5 POUNDS FOR INTERIOR DOORS, SUCH PULL OR PUSH EFFORT BEING APPLIED AT RIGHT ANGLES TO HINGED DOORS AND AT THE CENTER PLANE OF SLIDING OR FOLDING DOORS.
- RELOCATED / REUSE (E) DOOR - DOOR FRAMES AS REQUIRED.
- DUMMY TRIM - U.S. LOCK OR CAL ROYAL (LEVER)
- MAGNETIC HOLD OPEN