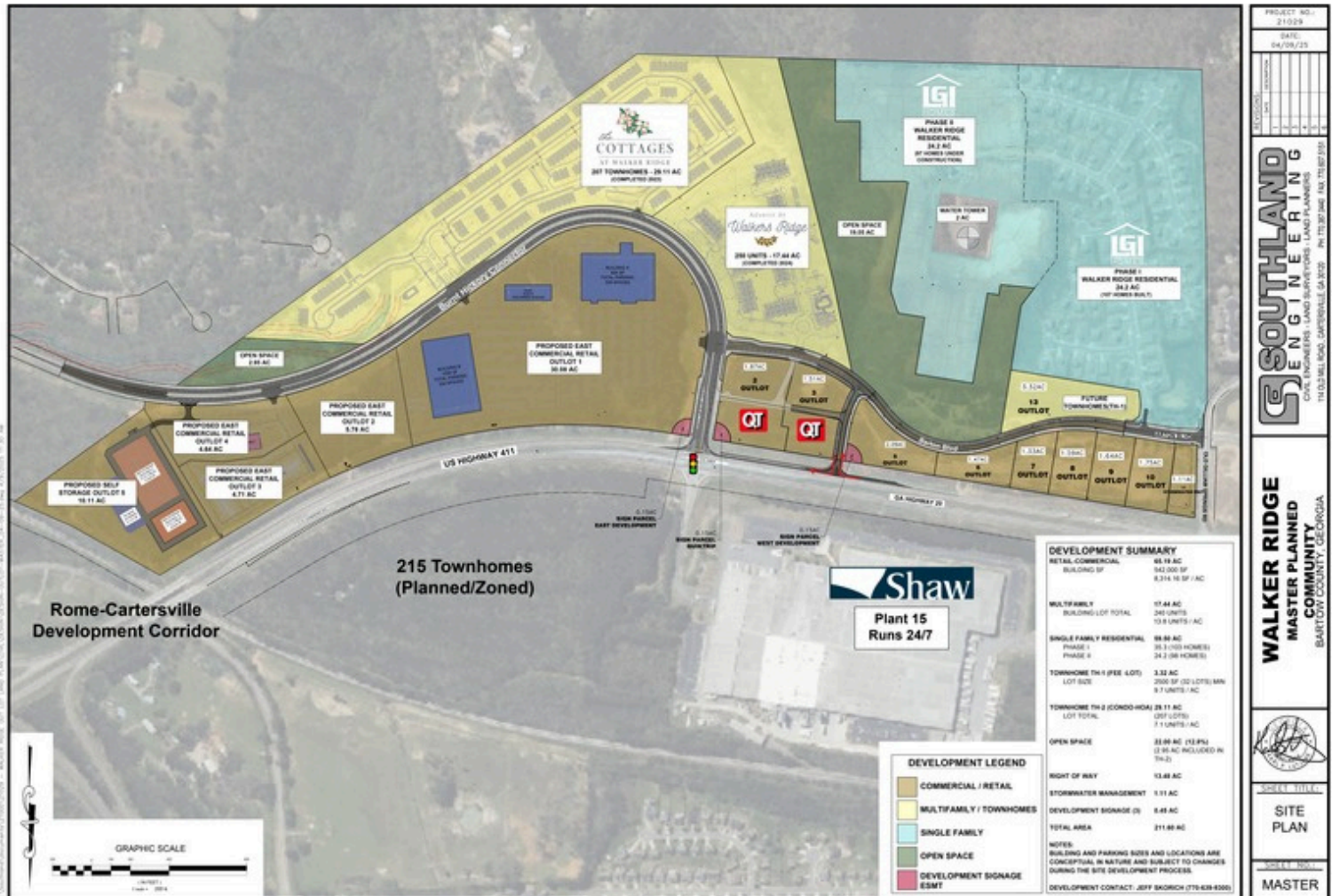


# 212 Acre Mixed Use Development: 14 Retail Parcels for Sale

U.S. Highway 411 & Burnt Hickory Connector  
Cartersville, Bartow County, GA



**WALKER  
RIDGE**



- 661 residential units SOLD, surrounded by active single family and multifamily communities
- Signalized access at U.S. Hwy 411 and Burnt Hickory Connector
- Across from Shaw Plant 15 and near Hyundai/SK On Battery Plant (3,500+ jobs, 24/7 ops)
- QuikTrip secured two adjacent corner lots for gas and car wash
- ~30,000 vehicles per day on Hwy 411
- All utilities onsite and parcels ready for development

- Ideal uses:
- QSRs/Restaurants
- Retail
- Supermarket
- Hotels
- Medical/Healthcare/Drug Store
- Auto service
- Bank

**Richard Moore, Partner**  
**Lauren Moore, Marketing**  
☎ **404/512-2890**  
✉ **lauren@migatl.com**



*Scan the QR code for more development information*