

For Lease
±1,191 SF
Medical Office
Space



1250 S Federal Hwy

1250 S Federal Hwy, Suite 101
Boynton Beach, FL 33435

Property Features

- Located in a beautifully maintained plaza featuring lush landscaping, a tranquil courtyard, & ample parking
- Fully built-out medical space with an efficient layout - ideal for a variety of medical professionals
- Prime Federal Highway location near the Intracoastal Waterway
- Just 1 mile east of I-95 & 1.5 miles from Bethesda Hospital East

Key Features:



Prime medical office space with an efficient layout



Surrounded by dense residential communities, retail, & medical in a coastal location



Convenient access to US-1, A1A, & I-95

For More Information:

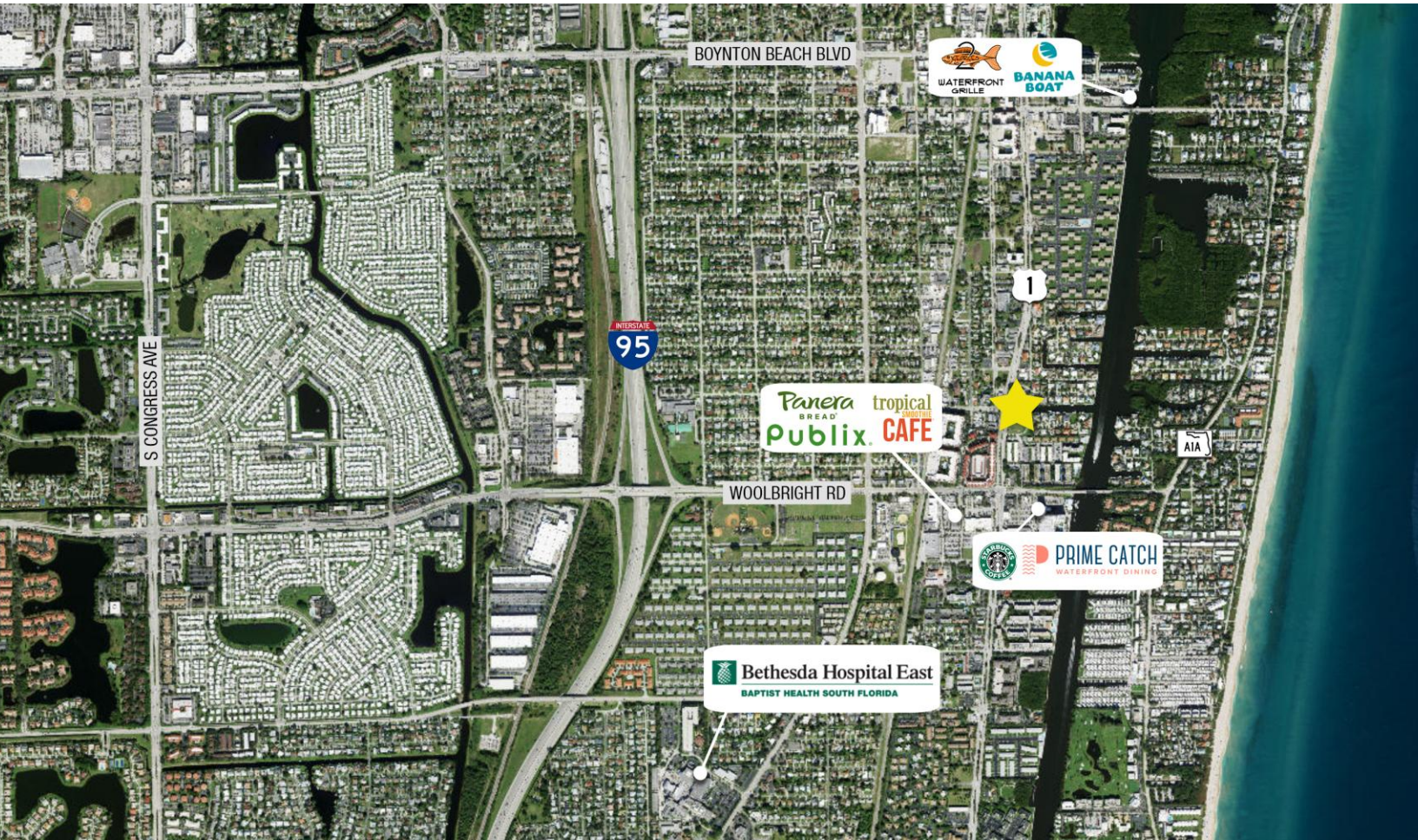
Lesley Sheinberg, Managing Director
C: 561 254 7810 | lsheinberg@mhcreal.com

Julia Piatek, Associate
C: 954 939 1444 | jpiatek@mhcreal.com



FOR LEASE: 1250 S FEDERAL HWY, SUITE 101

Charming Medical Space in a High-Traffic Corridor



Ideally situated along Federal Highway near the Intracoastal Waterway, this property is just 1 mile from I-95 and approximately 1.5 miles from Bethesda Hospital East. Surrounded by established medical offices, dense residential neighborhoods, and nearby retail plazas, this site benefits from 44,000 vehicles passing daily. 1250 S Federal Hwy offers strong accessibility, convenience, and a built-in customer base.



Available Space: Suite 101: ±1,119 SF

Rental Rate: \$35.50/SF Gross
Tenant pays electric & HVAC

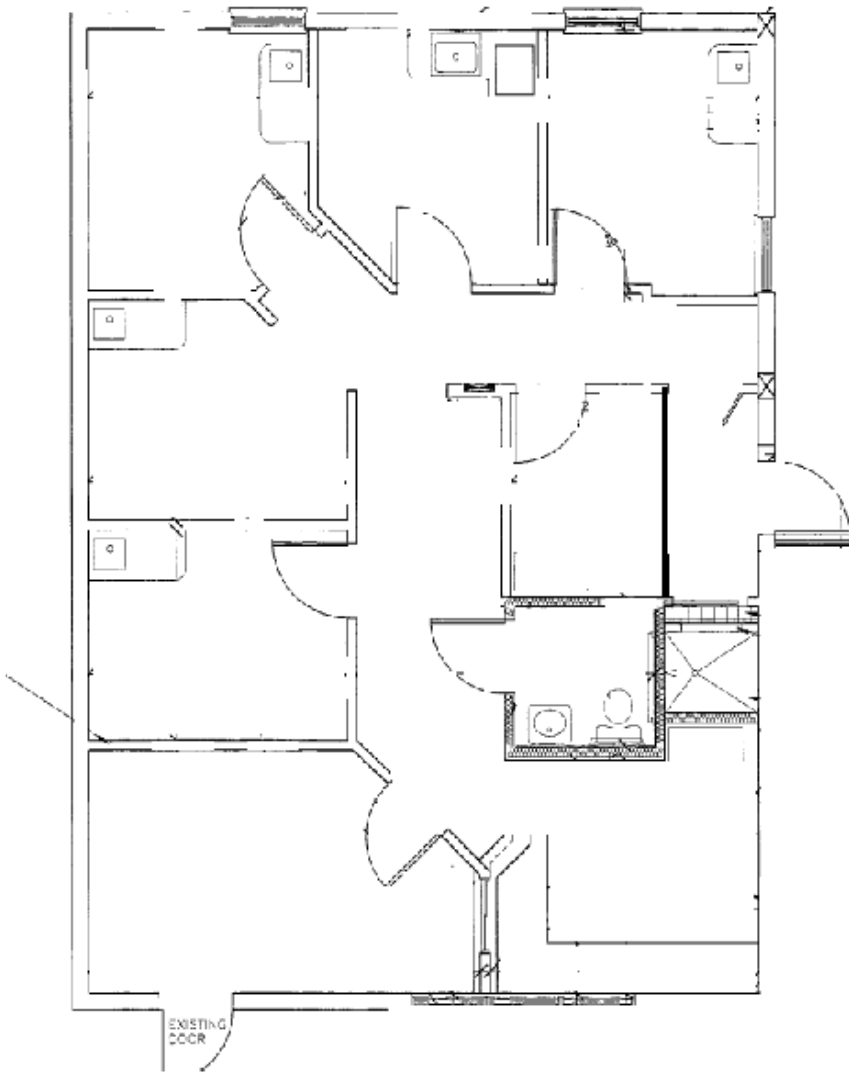
Parking: Ample surface parking

For More Information:

Lesley Sheinberg
lsheinberg@mhcreal.com

Julia Piatek
jpiatek@mhcreal.com

FOR LEASE: 1250 S FEDERAL HWY, SUITE 101
±1,119 SF Boutique Medical Space



Efficiently designed medical suite with a reception area, multiple exam rooms, and an in-suite restroom.

**SCHEDULE YOUR
TOUR TODAY!**
561 471 8000

For More Information:
Lesley Sheinberg | lsheinberg@mhcreal.com
Julia Piatek | jpiatek@mhcreal.com