

for
sale



Edén
apartments
8942-48 eden ave
st. louis, mo 63123

8
apartments

**2 bed, large
updated
units**

**great
south county
location**

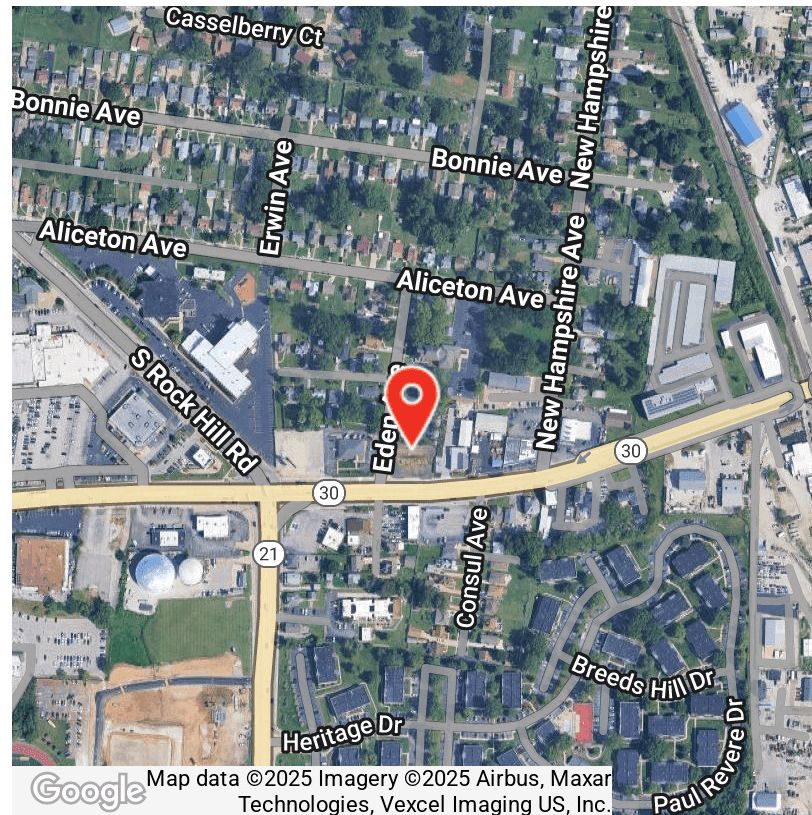


PROPERTY HIGHLIGHTS

- 8 - Spacious 2 bed/1 bth units
- Updated with modern finishes - Washer/dryer in all units
- Stabilized with strong upside - 7.27% In-Place Cap Rate
- Located in Affton, MO - high demand submarket

OFFERING SUMMARY

Sale Price:	\$1,130,000
Number of Units:	8
In-Place Cap Rate:	7.27%
Building Size:	6,864 SF
Unit Mix:	All 2 Bed / 1 Bath Units



Map data ©2025 Imagery ©2025 Airbus, Maxar Technologies, Vexcel Imaging US, Inc.



4400 CHOUTEAU AVE | ST. LOUIS, MO 63110
SALIENTREALTYGROUP.COM

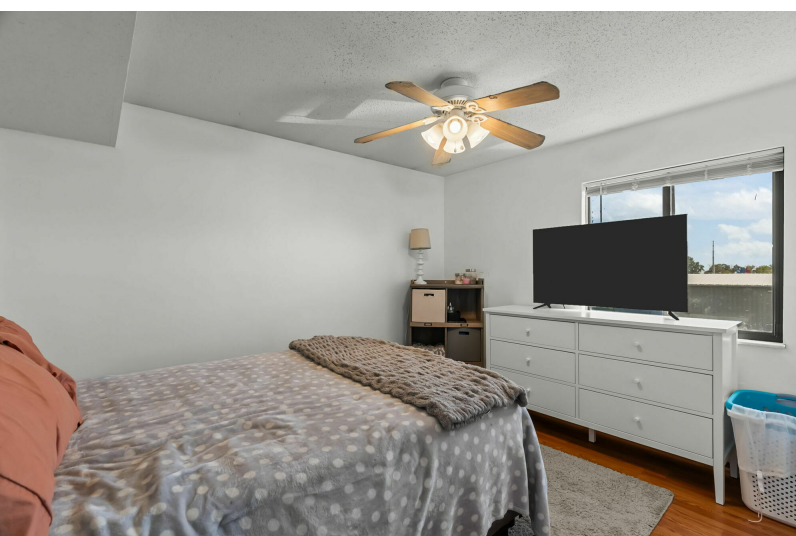
TIMOTHY MCCARTHY
314.451.7145

TMCCARTHY@SALIENTREALTYGROUP.COM
SENIOR ASSOCIATE

MATTHEW MILLSLAGE
314.208.2395

MMILLSLAGE@SALIENTREALTYGROUP.COM
ASSOCIATE

No expressed or implied warranty or representation is made as to the accuracy of the information contained herein. This property is submitted subject to errors, omissions, change of price, withdrawal without notice, prior lease or sale and any other listing conditions imposed by the principals.



4400 CHOUTEAU AVE | ST. LOUIS, MO 63110
SALIENTREALTYGROUP.COM

TIMOTHY MCCARTHY
314.451.7145

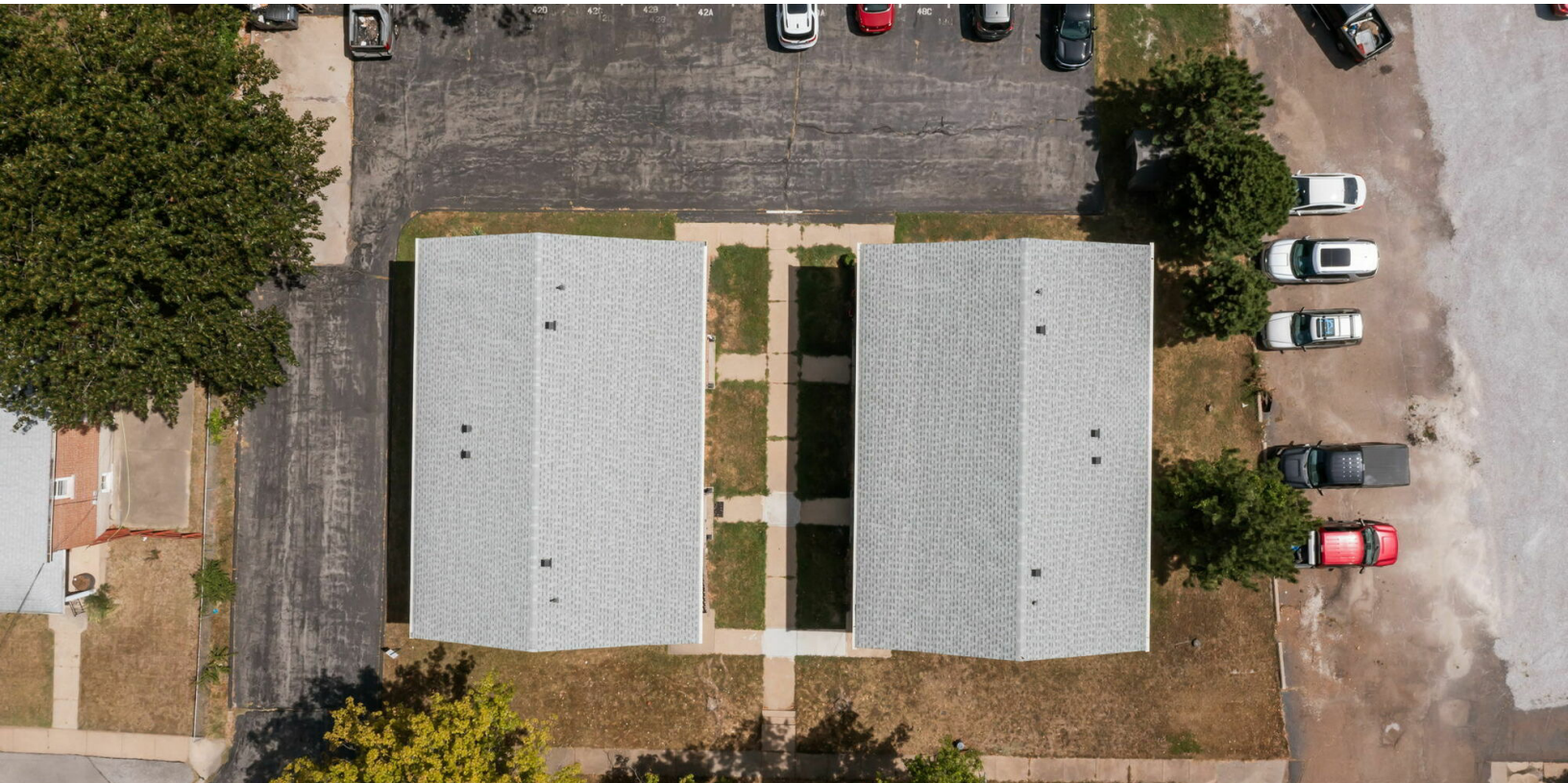
TMCCARTHY@SALIENTREALTYGROUP.COM
SENIOR ASSOCIATE

MATTHEW MILLSLAGLE
314.208.2395

MMILLSLAGLE@SALIENTREALTYGROUP.COM
ASSOCIATE

No expressed or implied warranty or representation is made as to the accuracy of the information contained herein. This property is submitted subject to errors, omissions, change of price, withdrawal without notice, prior lease or sale and any other listing conditions imposed by the principals.

UNIT	BEDROOMS	BATHROOMS	SIZE SF	RENT	RENT / SF	MARKET RENT	MARKET RENT / SF	LEASE END
8948A	2	1	900 SF	\$1,175	\$1.31	\$1,295	\$1.44	11/30/2025
8948B	2	1	900 SF	\$1,150	\$1.28	\$1,295	\$1.44	8.30/2025
8948C	2	1	900 SF	\$950	\$1.06	\$1,295	\$1.44	12/31/2024
8948D	2	1	900 SF	\$1,125	\$1.25	\$1,295	\$1.44	5/30/2026
8942A	2	1	900 SF	\$1,150	\$1.28	\$1,295	\$1.44	7/31/2027
8942B	2	1	900 SF	\$1,085	\$1.21	\$1,295	\$1.44	8/31/2026
8942C	2	1	900 SF	\$950	\$1.06	\$1,295	\$1.44	9/30/2025
8942D	2	1	900 SF	\$975	\$1.08	\$1,295	\$1.44	10/30/2025
TOTALS			7,200 SF	\$8,560	\$9.53	\$10,360	\$11.52	
AVERAGES			900 SF	\$1,070	\$1.19	\$1,295	\$1.44	



4400 CHOUTEAU AVE | ST. LOUIS, MO 63110
SALIENTREALTYGROUP.COM

TIMOTHY MCCARTHY
314.451.7145

TMCCARTHY@SALIENTREALTYGROUP.COM
SENIOR ASSOCIATE

MATTHEW MILLSLAGLE
314.208.2395

MMILLSLAGLE@SALIENTREALTYGROUP.COM
ASSOCIATE

No expressed or implied warranty or representation is made as to the accuracy of the information contained herein. This property is submitted subject to errors, omissions, change of price, withdrawal without notice, prior lease or sale and any other listing conditions imposed by the principals.

INVESTMENT OVERVIEW

Price	\$1,130,000
Price per SF	\$165
Price per Unit	\$141,250
GRM	11
CAP Rate	7.27%

OPERATING DATA

Gross Scheduled Income	\$102,720
Other Income	\$1,020
Total Scheduled Income	\$103,740
Vacancy Cost	\$5,136
Gross Income	\$98,604
Operating Expenses	\$16,454
Net Operating Income	\$82,150



4400 CHOUTEAU AVE | ST. LOUIS, MO 63110
SALIENTREALTYGROUP.COM

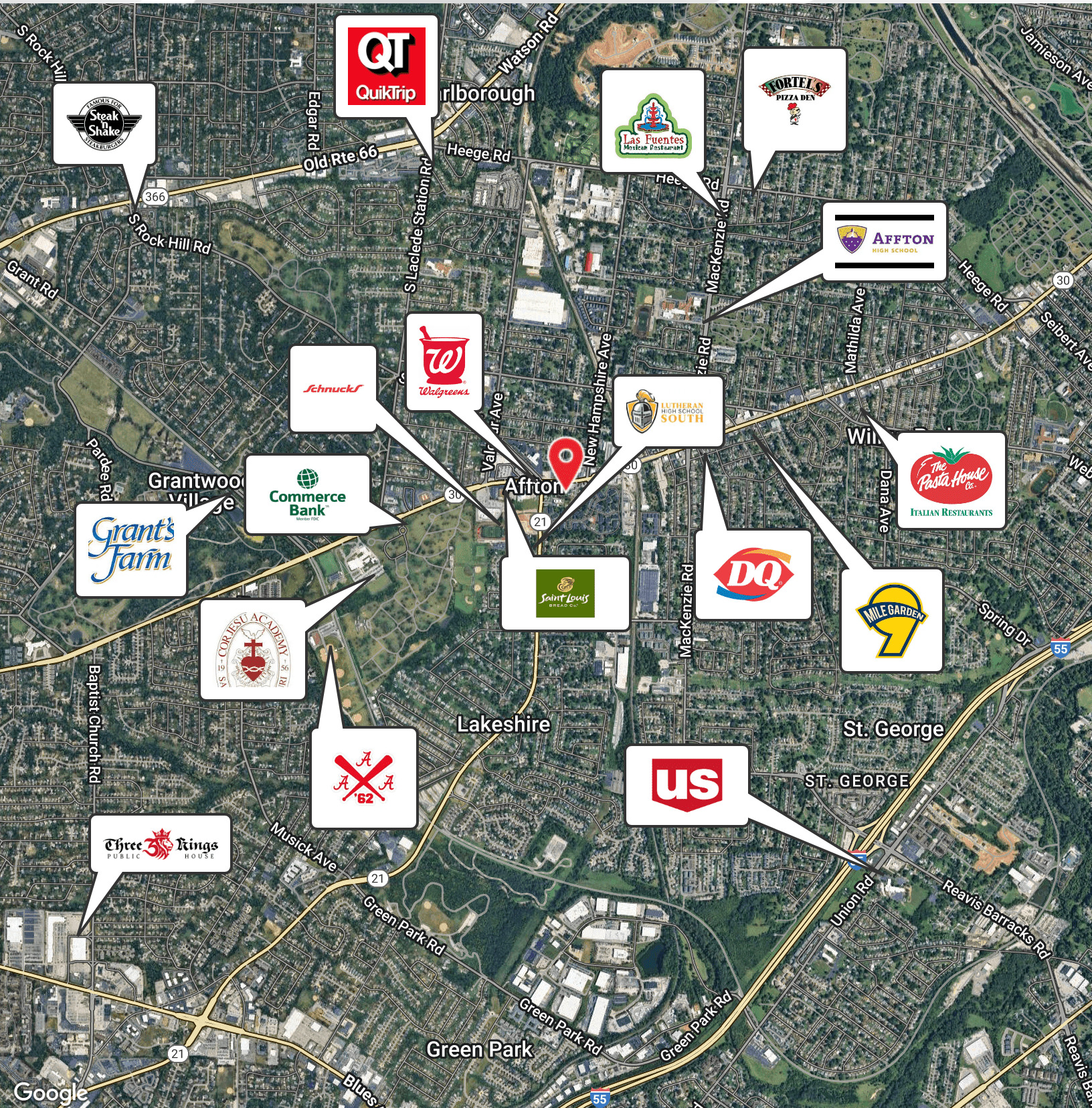
TIMOTHY MCCARTHY
314.451.7145

TMCCARTHY@SALIENTREALTYGROUP.COM
SENIOR ASSOCIATE

MATTHEW MILLSLAGE
314.208.2395

MMILLSLAGE@SALIENTREALTYGROUP.COM
ASSOCIATE

No expressed or implied warranty or representation is made as to the accuracy of the information contained herein. This property is submitted subject to errors, omissions, change of price, withdrawal without notice, prior lease or sale and any other listing conditions imposed by the principals.



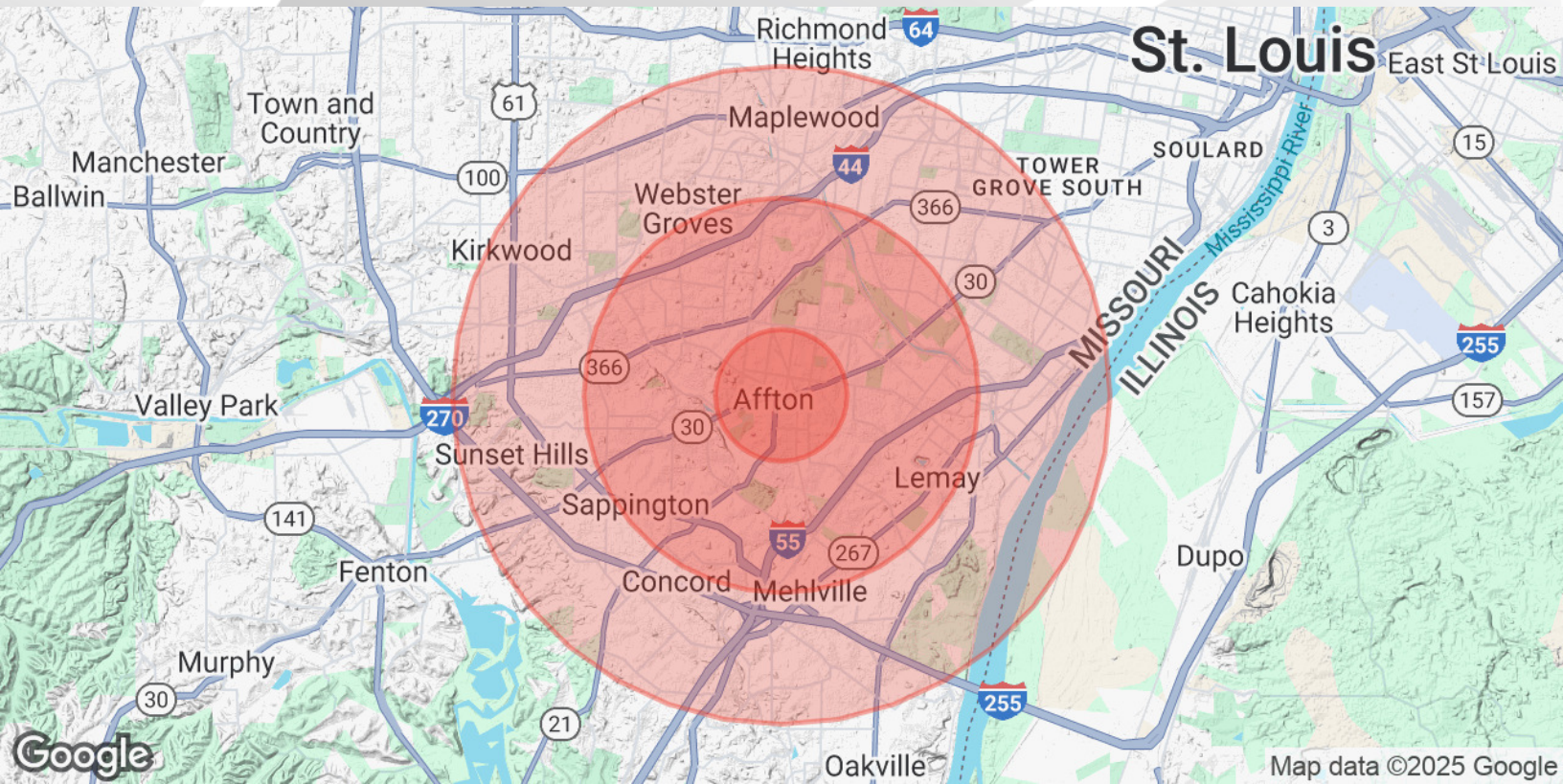
4400 CHOUTEAU AVE | ST. LOUIS, MO 63110
SALIENTREALTYGROUP.COM

TIMOTHY MCCARTHY
314.451.7145

TMCCARTHY@SALIENTREALTYGROUP.COM
SENIOR ASSOCIATE

MATTHEW MILLSLAGE
314.208.2395

MMILLSLAGE@SALIENTREALTYGROUP.COM
ASSOCIATE

**POPULATION****1 MILE****3 MILES****5 MILES**

Total Population	12,532	114,293	293,849
Average Age	42	43	43
Average Age (Male)	40	41	41
Average Age (Female)	44	45	44

HOUSEHOLDS & INCOME**1 MILE****3 MILES****5 MILES**

Total Households	5,835	51,202	132,086
# of Persons per HH	2.1	2.2	2.2
Average HH Income	\$83,361	\$99,963	\$104,041
Average House Value	\$241,502	\$283,139	\$319,408

Demographics data derived from AlphaMap



4400 CHOUTEAU AVE | ST. LOUIS, MO 63110
SALIENTREALTYGROUP.COM

TIMOTHY MCCARTHY
314.451.7145

TMCCARTHY@SALIENTREALTYGROUP.COM
SENIOR ASSOCIATE

MATTHEW MILLSLAGE
314.208.2395

MMILLSLAGE@SALIENTREALTYGROUP.COM
ASSOCIATE

No expressed or implied warranty or representation is made as to the accuracy of the information contained herein. This property is submitted subject to errors, omissions, change of price, withdrawal without notice, prior lease or sale and any other listing conditions imposed by the principals.