

RETAIL
FOR SUBLEASE

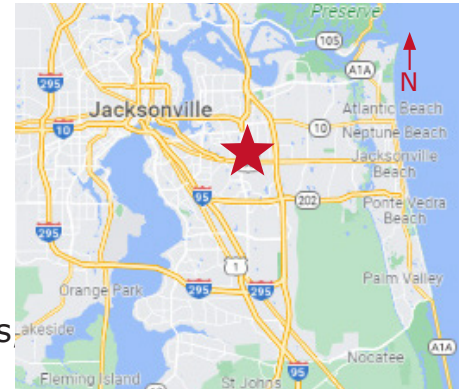
Tapestry Park Retail

9823 Tapestry Park Circle, Unit #15, Jacksonville, FL 32216



- **Unit #15: +/-855 SF**

- Sublease Rate: \$24.00/SF NNN
- CAM: \$8.00/SF
- Access from Southside Blvd. (AADT 88,300) and Gate Pkwy (AADT 19,800)
- Mixed-use development with retail, office, and townhouses; including Jax Sports Nutrition, Jimmy John's, III Forks Steakhouse, uBreakiFix, Another Brokern Egg Cafe, Starbucks Pure Barre
- There are over 20,000 Multifamily Units and 17,000,000 SF of commercial space within a 3 mile radius.
- Conveniently located near J.T. Butler Blvd. and minutes from St. Johns Town Center



2025 Demographics	1 Mile	3 Mile	5 Mile
Estimated Population	13,591	80,361	216,542
Average HH Income	\$101,199	\$94,608	\$100,627
Daytime Total Employees	12,774	87,029	153,889



STRATEGIC SITES **Clifford Commercial**

For Additional
Information Contact:

Clay Weaver
clay@strategicsites.com

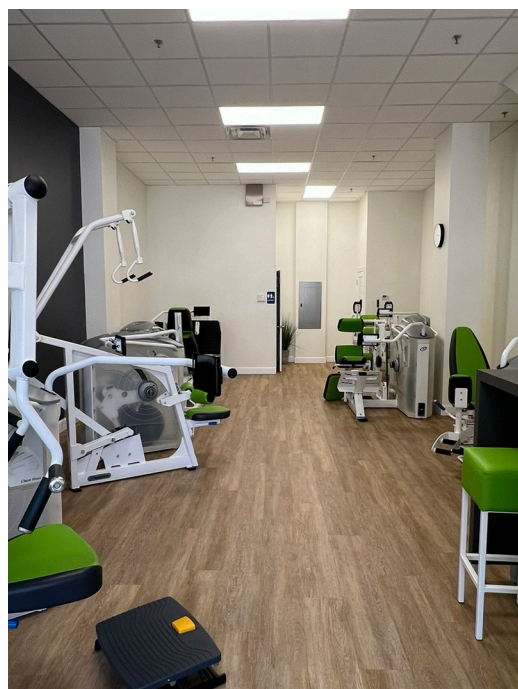
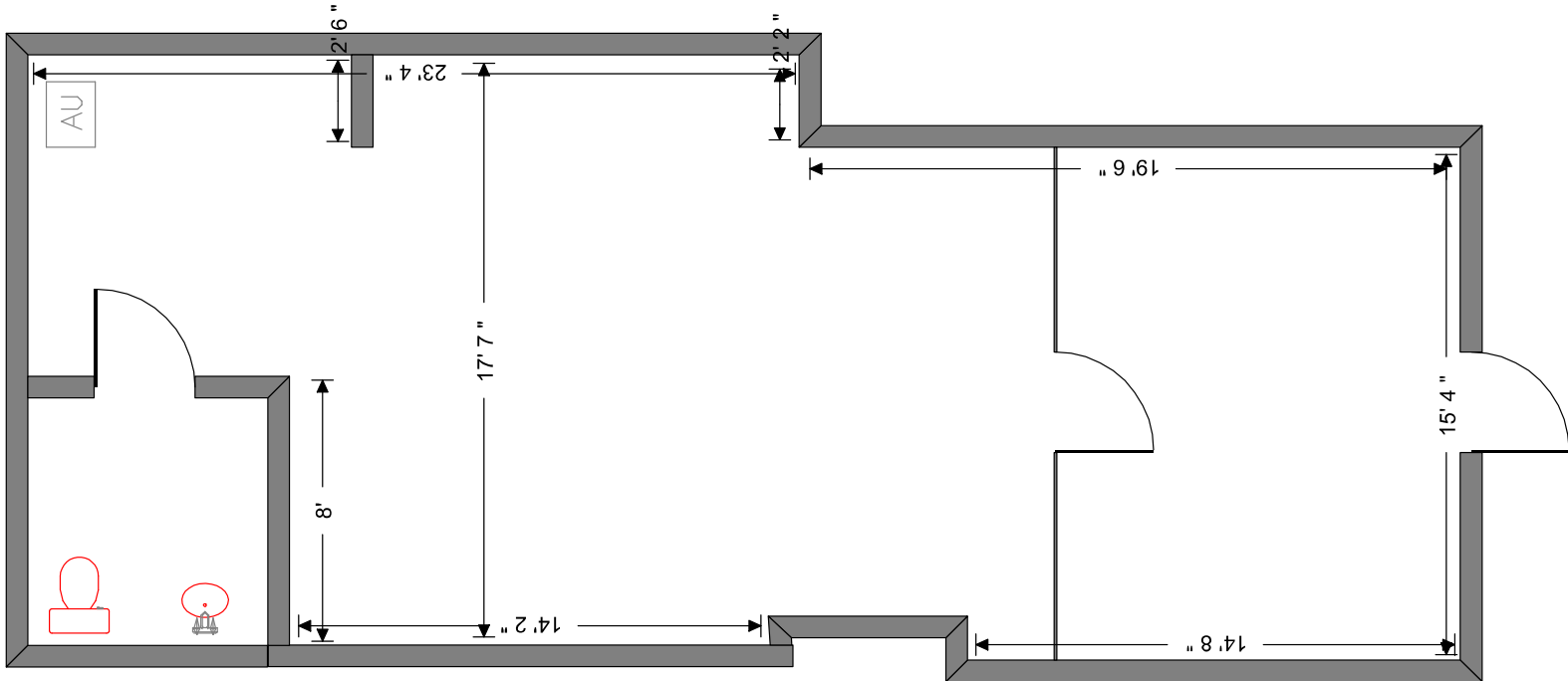
OR
Katie Kirchner
katiek@strategicsites.com

422 Jacksonville Drive, Jacksonville Beach, FL ~ 904-242-2828 ~ www.strategicsites.com

Client First through Service, Knowledge and Integrity

Notice of Disclaimer: Details contained herein are believed to be correct: the information is subject to errors, omissions, price changes, or withdrawal without notice

Floor Plan +/- 855 RSF



422 Jacksonville Drive, Jacksonville Beach, FL ~ 904-242-2828 ~ www.strategicsites.com

Client First through Service, Knowledge and Integrity

Notice of Disclaimer: Details contained herein are believed to be correct: the information is subject to errors, omissions, price changes, or withdrawal without notice