

# ASHLAND & ROOSEVELT

ASHLAND AVENUE & ROOSEVELT ROAD / CHICAGO, IL



ACROSS THE STREET FROM NEW  
CHICAGO FIRE TRAINING FACILITY



RETAIL SPACE AVAILABLE NOW

# ASHLAND & ROOSEVELT

ASHLAND AVENUE & ROOSEVELT ROAD / CHICAGO, IL

## ADDRESS

1220 S Ashland Avenue  
Chicago, IL 60608

## AVAILABILITY

1,850 SF Available  
2,500 SF Available  
2,744 SF Available

## JOIN THESE RETAILERS



**DUNKIN'**

*Rainbow*

SAINT ANTHONY  
HOSPITAL

**DTLR**

## FEATURES

- Across the Street from New 30 Acre Chicago Fire Football Club Training Facility
- Adjacent to University of Illinois Medical Center and Costco
- Close proximity to University of Illinois at Chicago (16,000 undergraduates)
- Grocery-anchored shopping center
- Extremely busy center with a population of over 459,000 people in a 3-mile radius

## TRAFFIC COUNTS

Ashland Avenue - 23,700 VPD  
Roosevelt Road - 21,700 VPD

## DEMOGRAPHICS

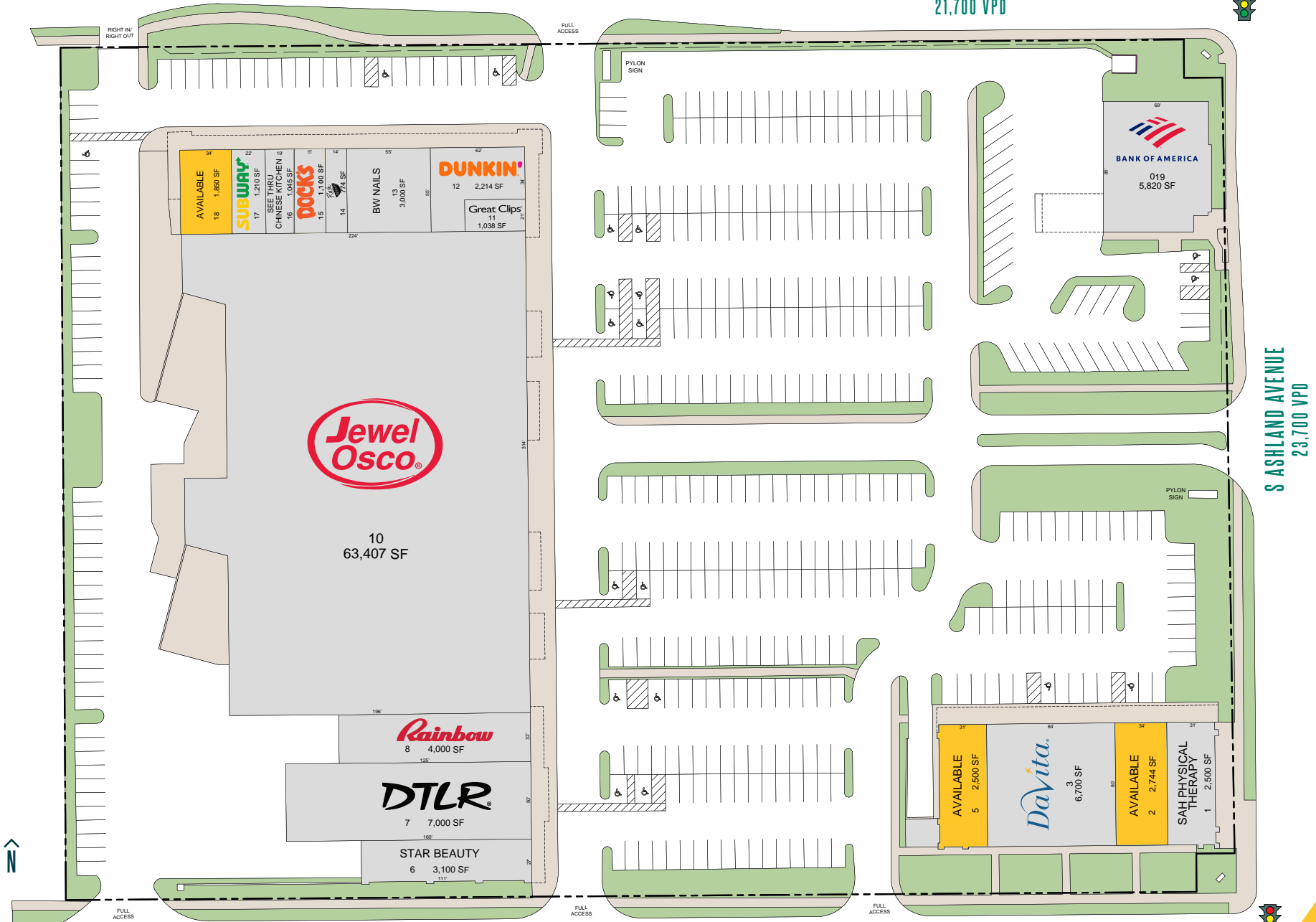
	1M	2M	3M
AVG HOUSEHOLD INCOME	\$103,590	\$127,589	\$137,538
POPULATION	43,317	165,331	459,135
DAYTIME POPULATION	84,973	411,273	933,056



# ASHLAND & ROOSEVELT



W ROOSEVELT ROAD  
21,700 VPD



SASHLAND AVENUE  
23,700 VPD





EISENHOWER EXPRESSWAY - 192,500 VPD

DAN RYAN EXPRESSWAY - 211,600 VPD

**ILLINOIS MEDICAL DISTRICT**

RUSH HOSPITAL  
 COOK COUNTY HOSPITAL  
 UIC HOSPITAL  
 30,000 EMPLOYEES  
 75,000 DAILY VISITORS

ASHLAND AVENUE - 23,700 VPD

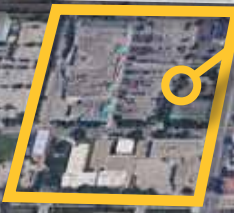
**SITE**

Jewel Osco. Rush bows BANK OF AMERICA  
 DUNKIN' Rainbow  
 SAINT ANTHONY HOSPITAL

ROOSEVELT ROAD - 21,700 VPD

**THE UNIVERSITY OF ILLINOIS AT CHICAGO**

16,000 UNDERGRADUATE STUDENTS



**NEW CHICAGO FIRE  
 30 ACRE  
 STATE OF THE ART  
 TRAINING ACADEMY**



# ASHLAND & ROOSEVELT

ASHLAND AVENUE & ROOSEVELT ROAD / CHICAGO, IL



# ASHLAND & ROOSEVELT

ASHLAND AVENUE & ROOSEVELT ROAD / CHICAGO, IL

## BRENDAN REEDY

630.954.7390

[BReedy@MidAmericaGrp.com](mailto:BReedy@MidAmericaGrp.com)

## JIMMY DANAHER

630.954.7238

[JDanaher@MidAmericaGrp.com](mailto:JDanaher@MidAmericaGrp.com)

## GRIFFIN FLEMING

630.954.7320

[GFleming@MidAmericaGrp.com](mailto:GFleming@MidAmericaGrp.com)



410 N Michigan Ave  
Suite 1100  
Chicago, Illinois 60611  
630.954.7327  
[MidAmericaGrp.com](http://MidAmericaGrp.com)

