

PRIME OFFICE SUITE FOR LEASE

5 W MOUNTAIN ST

Fayetteville, AR 72701



VIDEO

PROPERTY DESCRIPTION

+/- 1,160 SF office suite for lease in prime Fayetteville location. Located directly on the Downtown Fayetteville Square, this office space offers access to restaurants, shops, and entertainment along with access to the Razorback Greenway. This office suite is located in the modern 5 W Mountain building with high visibility and convenient access. This suite is on the 3rd floor with large windows overlooking the courtyard, 6 large offices, one could make a good conference room, and a reception/waiting area. Also access to a community men's and women's restrooms, lobby/waiting area, and modern conference room. Personal parking spots are available in the attached garage for \$210/mo. This garage has elevator access directly to your floor. This suite is attached to the same building as the Jammin Java coffee shop, next door to Tiny Tim's Pizza, and a short walk to Hugo's restaurant providing many options for lunch breaks! Offered on a gross lease, with internet included, you benefit from easy and predictable costs.

PROPERTY HIGHLIGHTS

- Located on the Downtown Fayetteville Square
- Elevator Access and Private Parking Garage
- High Visibility and Convenient Access

OFFERING SUMMARY

Lease Rate:	\$29 SF/yr (Gross)
Available SF:	1,160 SF

DEMOGRAPHICS

	1 MILE	3 MILES	5 MILES
Total Households	5,406	25,242	43,543
Total Population	14,102	61,188	105,448
Average HH Income	\$64,094	\$74,886	\$92,172

We obtained the information above from sources we believe to be reliable. However, we have not verified its accuracy and make no guarantee, warranty or representation about it. It is submitted subject to the possibility of errors, omissions, change of price, rental or other conditions, prior sale, lease or financing, or withdrawal without notice. We include projections, opinions, assumptions or estimates for example only, and they may not represent current or future performance of the property. You and your tax and legal advisors should conduct your own investigation of the property and transaction.

SALMONSEN GROUP

Executive Broker
O: 479.231.1355
C: 479.330.1250
sgrleadmanager@gmail.com
AR #EB00066512

KW COMMERCIAL
201 SW 14th St.
Suite 203
Bentonville, AR 72712

Each Office Independently Owned and Operated salmonsengroup.com

PRIME OFFICE SUITE FOR LEASE

5 W MOUNTAIN ST

Fayetteville, AR 72701



We obtained the information above from sources we believe to be reliable. However, we have not verified its accuracy and make no guarantee, warranty or representation about it. It is submitted subject to the possibility of errors, omissions, change of price, rental or other conditions, prior sale, lease or financing, or withdrawal without notice. We include projections, opinions, assumptions or estimates for example only, and they may not represent current or future performance of the property. You and your tax and legal advisors should conduct your own investigation of the property and transaction.

SALMONSEN GROUP
Executive Broker
O: 479.231.1355
C: 479.330.1250
sgrleadmanager@gmail.com
AR #EB00066512

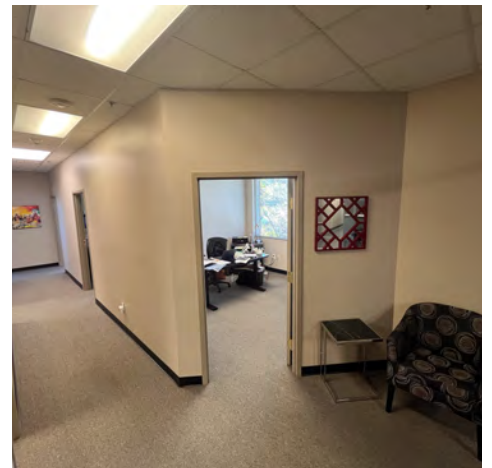
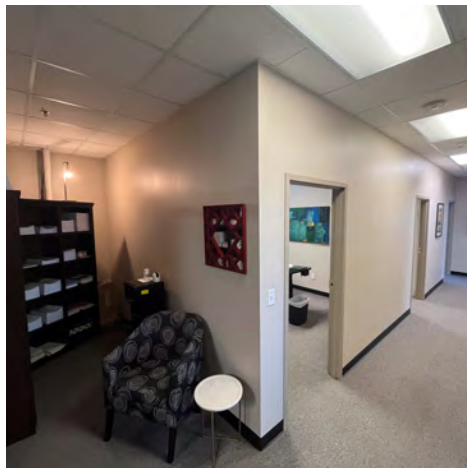
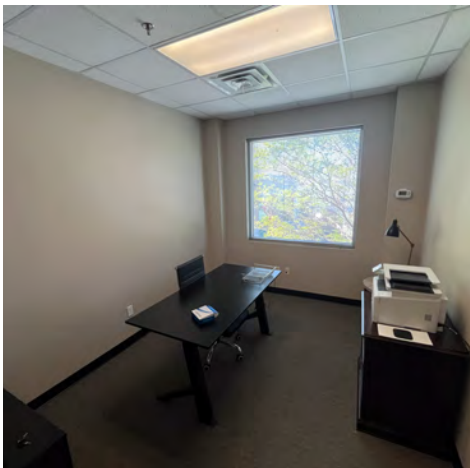
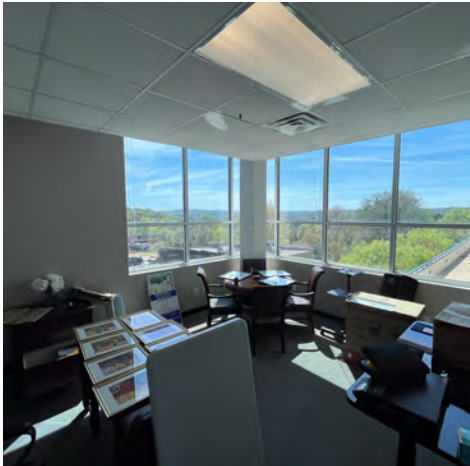
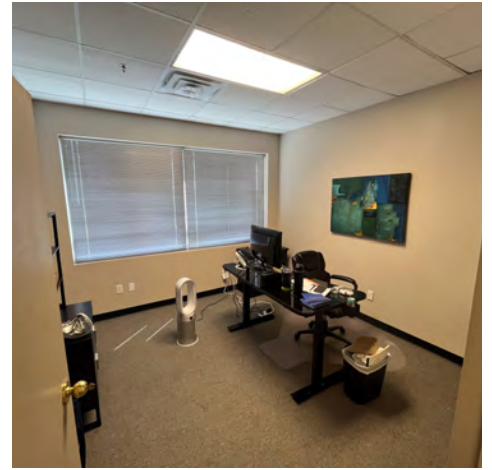
KW COMMERCIAL
201 SW 14th St.
Suite 203
Bentonville, AR 72712

Each Office Independently Owned and Operated salmonsengroup.com

PRIME OFFICE SUITE FOR LEASE

SUITE 301 PHOTOS

5 W Mountain St., Fayetteville, AR 72701



We obtained the information above from sources we believe to be reliable. However, we have not verified its accuracy and make no guarantee, warranty or representation about it. It is submitted subject to the possibility of errors, omissions, change of price, rental or other conditions, prior sale, lease or financing, or withdrawal without notice. We include projections, opinions, assumptions or estimates for example only, and they may not represent current or future performance of the property. You and your tax and legal advisors should conduct your own investigation of the property and transaction.

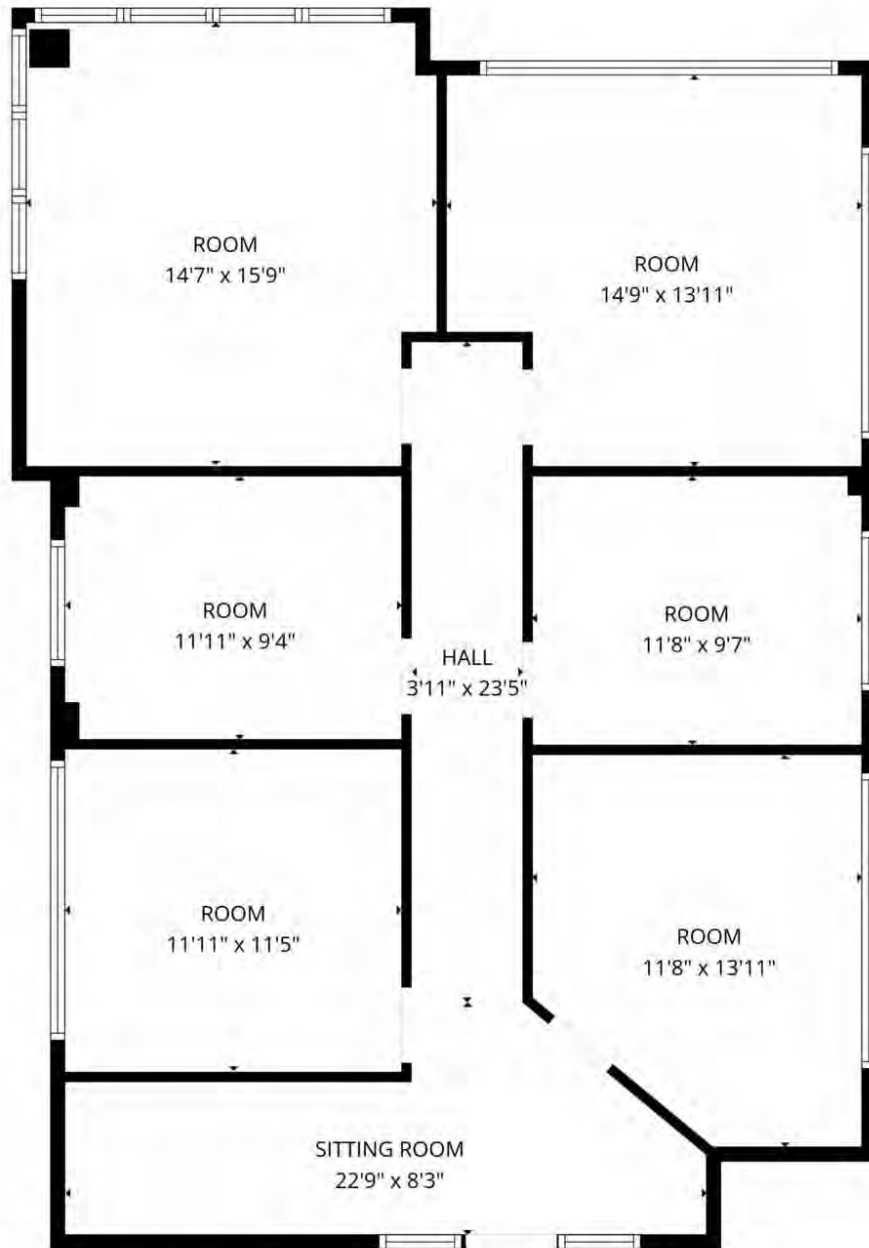
SALMONSEN GROUP
Executive Broker
O: 479.231.1355
C: 479.330.1250
sgrleadmanager@gmail.com
AR #EB00066512

KW COMMERCIAL
201 SW 14th St.
Suite 203
Bentonville, AR 72712

Each Office Independently Owned and Operated salmonsengroup.com

SUITE 301 FLOOR PLAN

5 W Mountain St., Fayetteville, AR 72701



Suite #301: +/- 1,160 SF

FLOOR PLAN CREATED BY CUBICASA APP. MEASUREMENTS DEEMED HIGHLY RELIABLE BUT NOT GUARANTEED

We obtained the information above from sources we believe to be reliable. However, we have not verified its accuracy and make no guarantee, warranty or representation about it. It is submitted subject to the possibility of errors, omissions, change of price, rental or other conditions, prior sale, lease or financing, or withdrawal without notice. We include projections, opinions, assumptions or estimates for example only, and they may not represent current or future performance of the property. You and your tax and legal advisors should conduct your own investigation of the property and transaction.

SALMONSEN GROUP
Executive Broker
O: 479.231.1355
C: 479.330.1250
sgrleadmanager@gmail.com
AR #EB00066512

KW COMMERCIAL
201 SW 14th St.
Suite 203
Bentonville, AR 72712

PRIME OFFICE SUITE FOR LEASE

5 W MOUNTAIN ST

Fayetteville, AR 72701



We obtained the information above from sources we believe to be reliable. However, we have not verified its accuracy and make no guarantee, warranty or representation about it. It is submitted subject to the possibility of errors, omissions, change of price, rental or other conditions, prior sale, lease or financing, or withdrawal without notice. We include projections, opinions, assumptions or estimates for example only, and they may not represent current or future performance of the property. You and your tax and legal advisors should conduct your own investigation of the property and transaction.

SALMONSEN GROUP
Executive Broker
O: 479.231.1355
C: 479.330.1250
sgrleadmanager@gmail.com
AR #EB00066512

KW COMMERCIAL
201 SW 14th St.
Suite 203
Bentonville, AR 72712

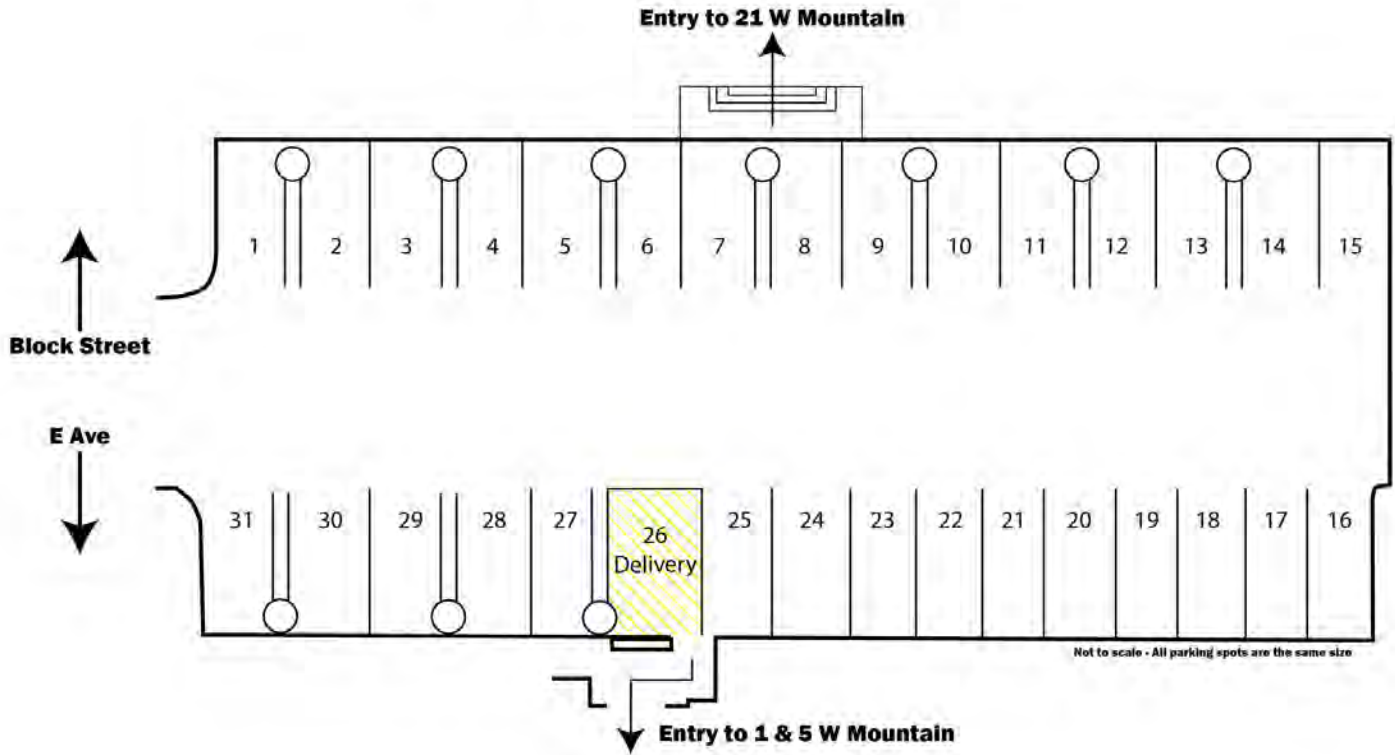
Each Office Independently Owned and Operated salmonsengroup.com

5 W MOUNTAIN ST

Fayetteville, AR 72701



1, 5 & 21 W Mountain Parking Map



We obtained the information above from sources we believe to be reliable. However, we have not verified its accuracy and make no guarantee, warranty or representation about it. It is submitted subject to the possibility of errors, omissions, change of price, rental or other conditions, prior sale, lease or financing, or withdrawal without notice. We include projections, opinions, assumptions or estimates for example only, and they may not represent current or future performance of the property. You and your tax and legal advisors should conduct your own investigation of the property and transaction.

SALMONSEN GROUP
Executive Broker
O: 479.231.1355
C: 479.330.1250
sgrleadmanager@gmail.com
AR #EB00066512

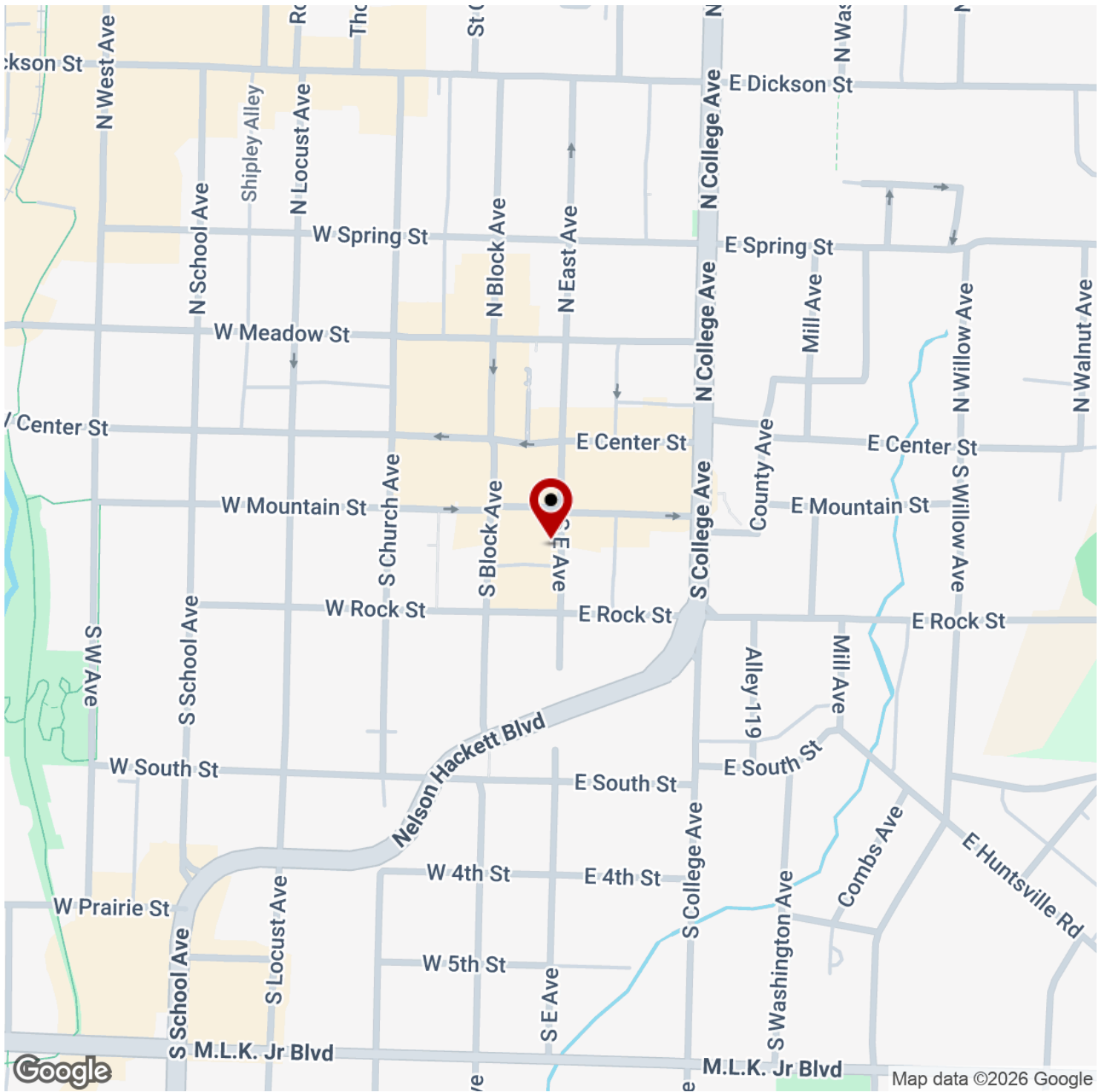
KW COMMERCIAL
201 SW 14th St.
Suite 203
Bentonville, AR 72712

PRIME OFFICE SUITE FOR LEASE



5 W MOUNTAIN ST

Fayetteville, AR 72701



We obtained the information above from sources we believe to be reliable. However, we have not verified its accuracy and make no guarantee, warranty or representation about it. It is submitted subject to the possibility of errors, omissions, change of price, rental or other conditions, prior sale, lease or financing, or withdrawal without notice. We include projections, opinions, assumptions or estimates for example only, and they may not represent current or future performance of the property. You and your tax and legal advisors should conduct your own investigation of the property and transaction.

SALMONSEN GROUP

Executive Broker
O: 479.231.1355
C: 479.330.1250
sgrleadmanager@gmail.com
AR #EB00066512

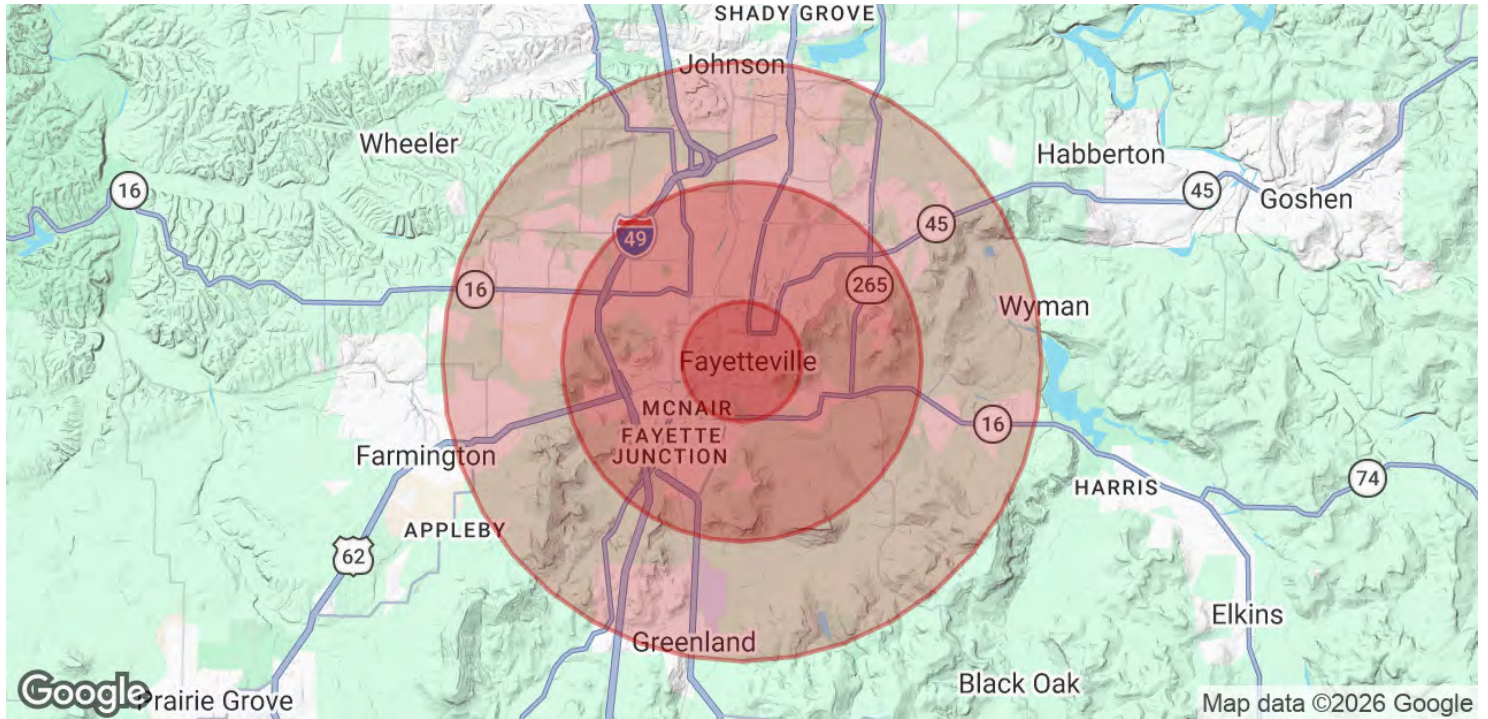
KW COMMERCIAL
201 SW 14th St.
Suite 203
Bentonville, AR 72712

Each Office Independently Owned and Operated salmonsengroup.com

PRIME OFFICE SUITE FOR LEASE

5 W MOUNTAIN ST

Fayetteville, AR 72701



POPULATION	1 MILE	3 MILES	5 MILES
Total Population	14,102	61,188	105,448
Average Age	31	32	34
Average Age (Male)	31	32	34
Average Age (Female)	31	33	35

HOUSEHOLDS & INCOME	1 MILE	3 MILES	5 MILES
Total Households	5,406	25,242	43,543
# of Persons per HH	2.6	2.4	2.4
Average HH Income	\$64,094	\$74,886	\$92,172
Average House Value	\$375,679	\$350,590	\$360,712

Demographics data derived from AlphaMap

We obtained the information above from sources we believe to be reliable. However, we have not verified its accuracy and make no guarantee, warranty or representation about it. It is submitted subject to the possibility of errors, omissions, change of price, rental or other conditions, prior sale, lease or financing, or withdrawal without notice. We include projections, opinions, assumptions or estimates for example only, and they may not represent current or future performance of the property. You and your tax and legal advisors should conduct your own investigation of the property and transaction.

SALMONSEN GROUP
 Executive Broker
 O: 479.231.1355
 C: 479.330.1250
 sgrleadmanager@gmail.com
 AR #EB00066512

KW COMMERCIAL
 201 SW 14th St.
 Suite 203
 Bentonville, AR 72712

Each Office Independently Owned and Operated salmonsengroup.com