



# Crestview Tower

OFFICE / FOR LEASE

105 Decker Ct, Irving, TX 75062



# Crestview Tower

OFFICE / FOR LEASE

105 Decker Ct, Irving, TX 75062



## Irving, TX

The 12-story Crestview Tower is mere minutes from State Highway 114 and DFW airport. A planned ~\$1.2 million capital investment will set this midrise tower apart from the competition.

**2024 Improvements include lobby and corridor upgrades, and exterior upgrades such as new signage and outdoor seating**

## Amenities

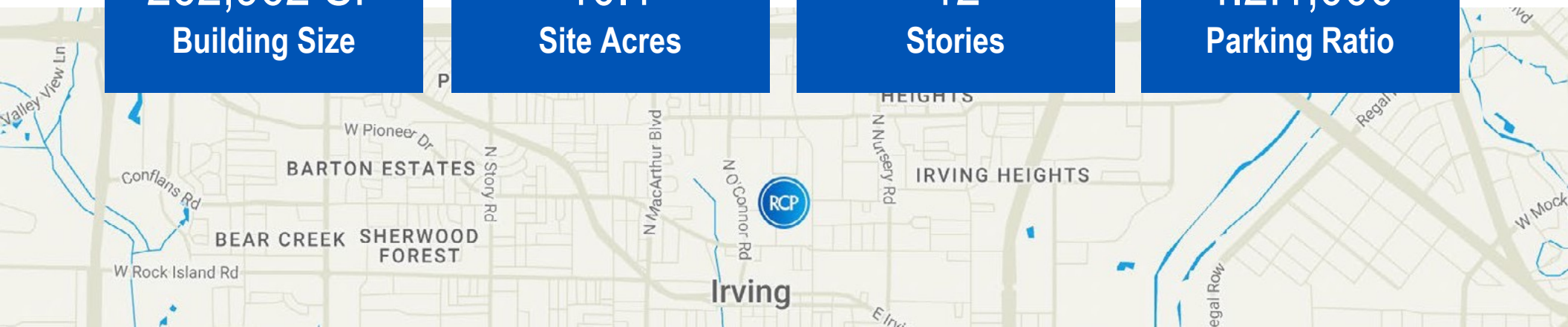
- Fitness center and locker rooms
- Grab & Go market
- All-inclusive coffee bar
- On-site conference center with accommodations for 30 people
- On-site property management
- 24-hour security
- Key card access
- Day maid / day porter
- Fiber/high speed internet
- Surface and garage parking available

262,962 SF  
Building Size

10.1  
Site Acres

12  
Stories

4.2:1,000  
Parking Ratio



# Crestview Tower

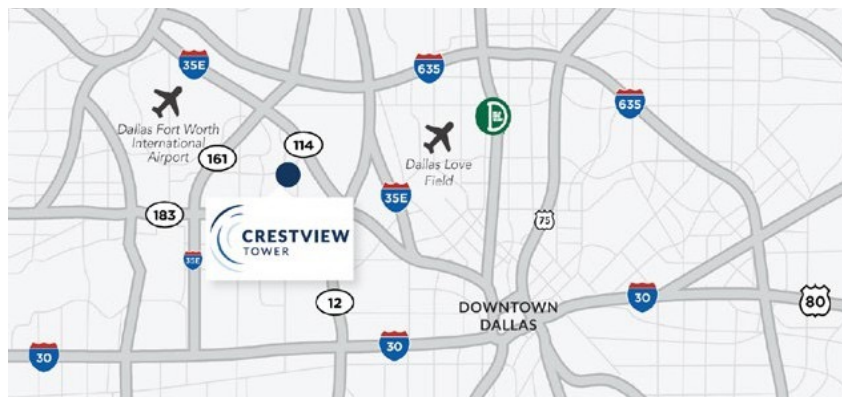
OFFICE / FOR LEASE

105 Decker Ct, Irving, TX 75062



## Building Features

- Updated lobby, corridors,
- Modern spec and white box suites
- Excellent Views of Urban Center and Las Colinas Golf Course
- Monument signage available
- 24/7 security
- Covered garage parking
- Enclosed delivery dock with easy access to service elevator



## Superior Access

- Close proximity to local airports and hotspots
- Easy access to five major freeways

10 Min.

DFW Airport

20 Min.

Downtown Dallas

15 Min.

DAL Airport

6 Min.

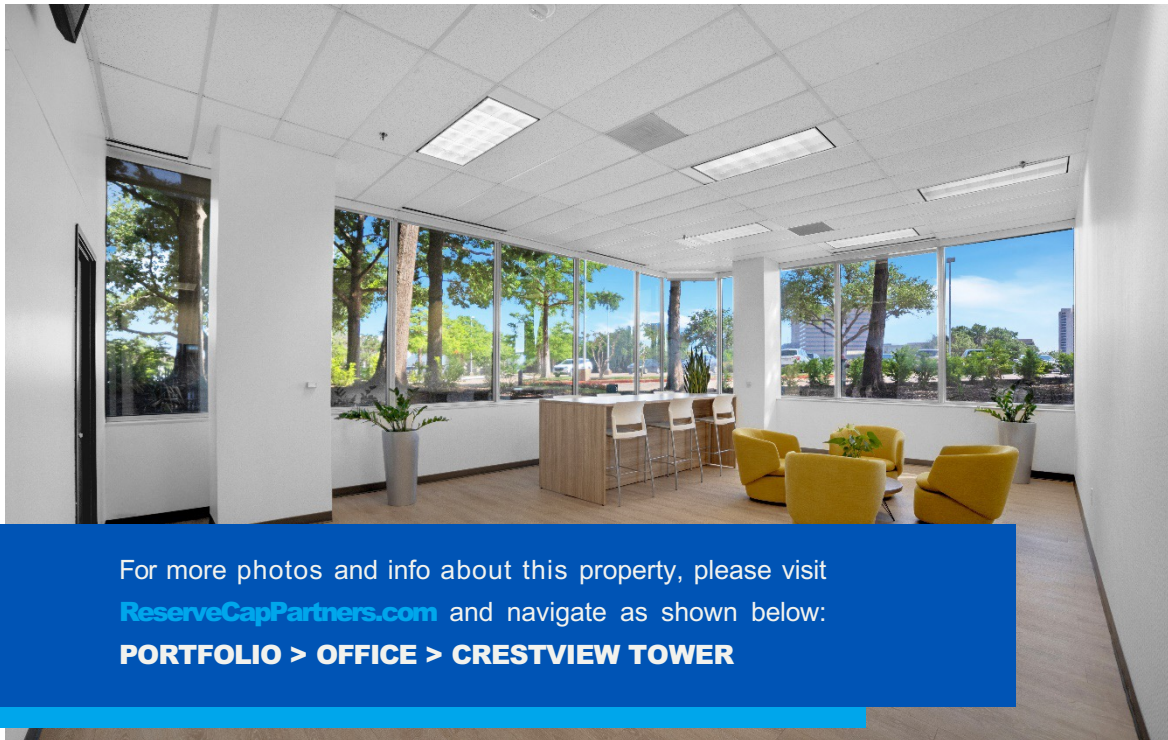
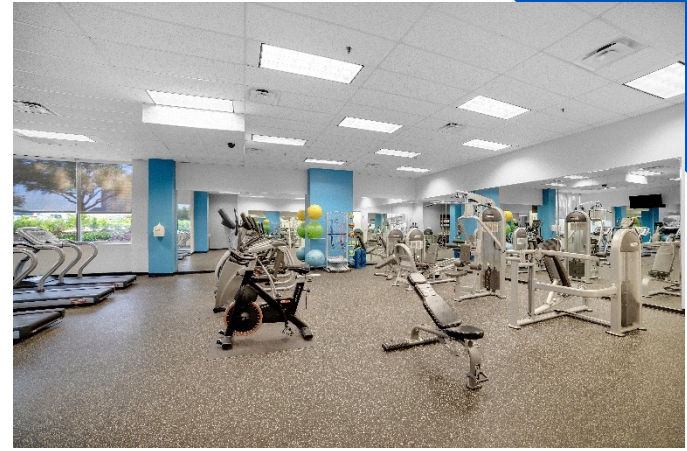
Toyota Music Factory

**Irving** is home to more than 2,000 companies,  
including **8** on the **Fortune 500 list.**

# Crestview Tower

OFFICE / FOR LEASE

105 Decker Ct, Irving, TX 75062

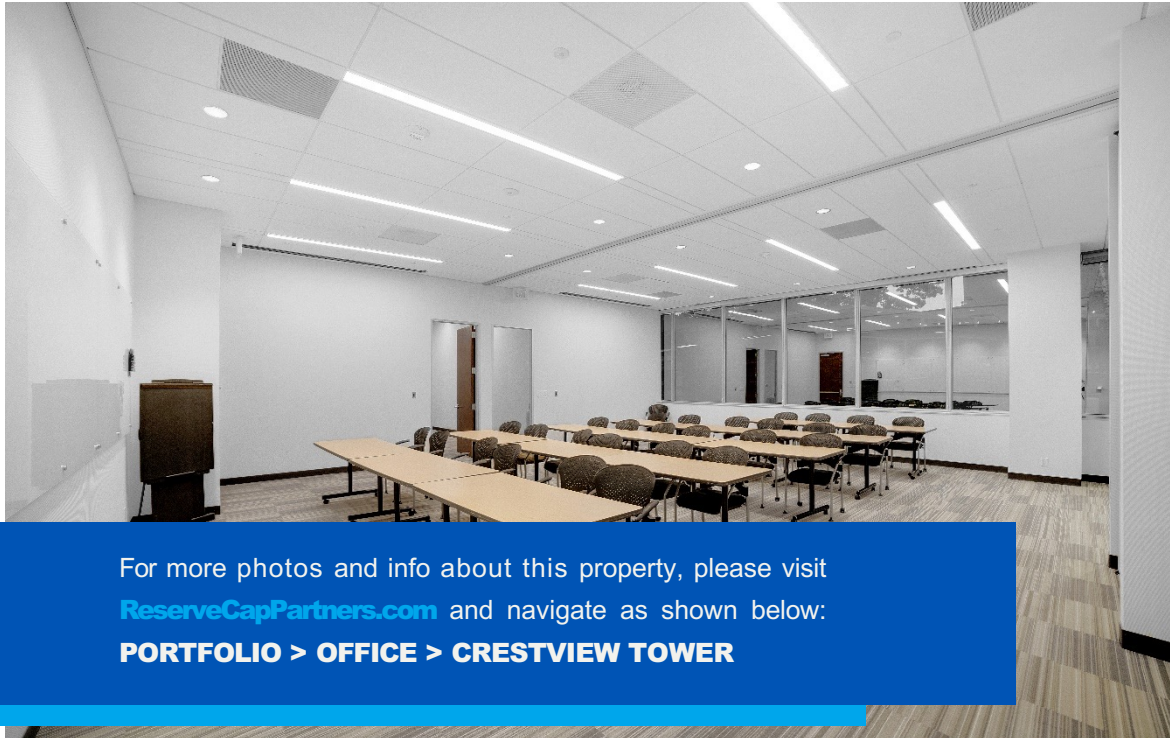
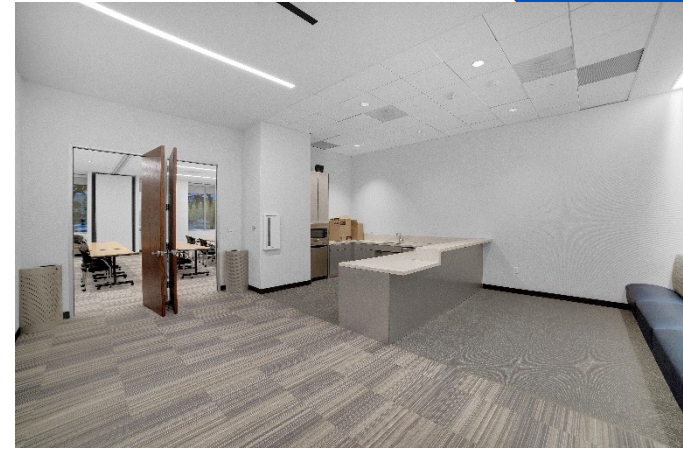


For more photos and info about this property, please visit [ReserveCapPartners.com](https://ReserveCapPartners.com) and navigate as shown below:  
**PORTFOLIO > OFFICE > CRESTVIEW TOWER**

# Crestview Tower

OFFICE / FOR LEASE

105 Decker Ct, Irving, TX 75062



For more photos and info about this property, please visit [ReserveCapPartners.com](https://ReserveCapPartners.com) and navigate as shown below:  
**PORTFOLIO > OFFICE > CRESTVIEW TOWER**

# Crestview Tower

OFFICE / FOR LEASE

105 Decker Ct, Irving, TX 75062



## Vacancies

### LL 100 - 1,144 SF (spec)

\*LL 110 - 1,712 SF

\*Suite 140 - 1,377 SF

\*Suite 160 - 2,033 SF

\*Suite 250 - 6,317 SF

Suite 300 - 5,104 SF (shell)

### Suite 410 - 3,004 SF (spec)

\*Suite 560 - 2,468 SF

\*Suite 640 - 2,016 SF

\*Suite 670 - 5,600 SF

\*Suite 735 - 5,810 SF

### Suite 800 - 4,013 SF (spec)

\*Suite 860 - 3,107 SF

### Suite 870 - 2,900 SF (spec)

\*Suite 875 - 2,132 SF

\*Suite 880 - 1,841 SF

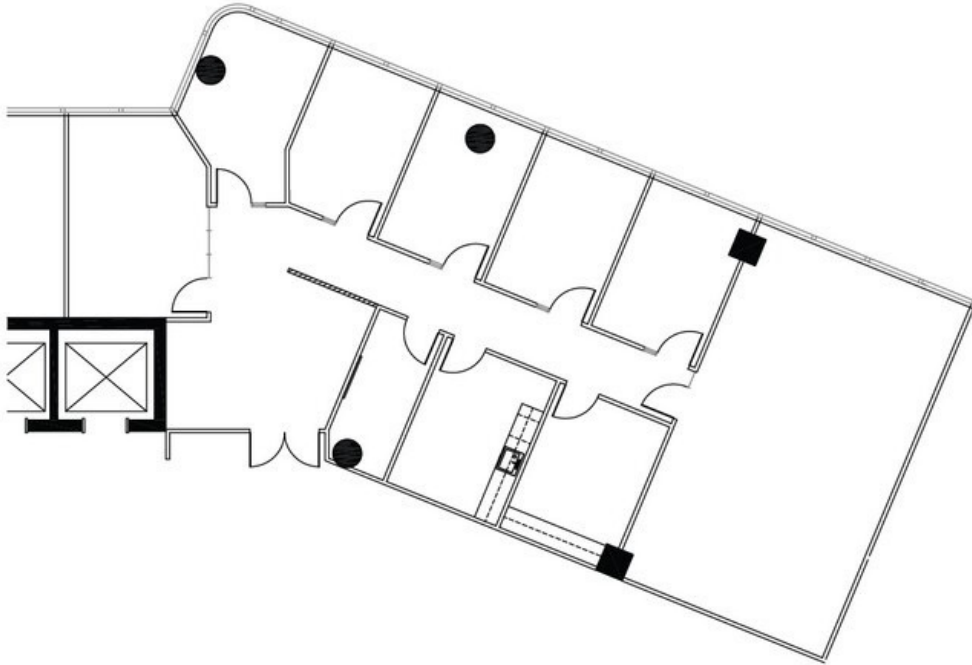
Suite 925 - 5,695 SF (shell)

\* Denotes 2<sup>nd</sup> gen space

# Crestview Tower

OFFICE / FOR LEASE

105 Decker Ct, Irving, TX 75062



## Crestview Tower

105 Decker Court, Irving, TX 75062

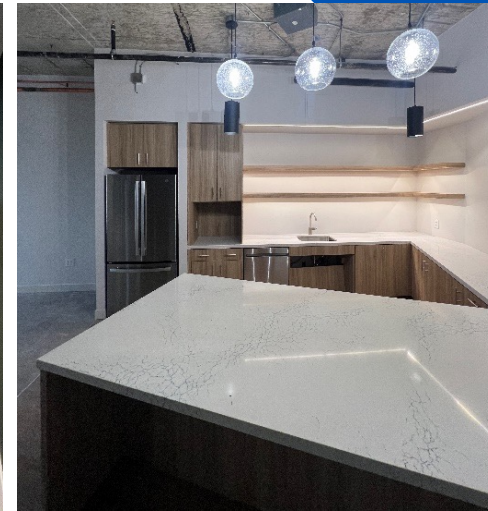
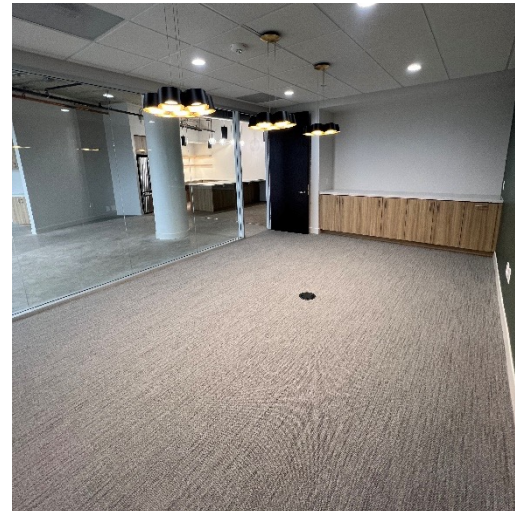
FLOOR: 4<sup>th</sup>  
SUITE: 410  
DATE: 3.1.24  
RSF: 3,004



# Crestview Tower

OFFICE / FOR LEASE

105 Decker Ct, Irving, TX 75062



## Crestview Tower

105 Decker Court, Irving, TX 75062

FLOOR: 8<sup>th</sup>  
SUITE: 800  
DATE: 3.1.24  
RSF: 4,013



5400 LBJ Freeway, Suite 125  
Dallas, Texas 75240  
972.770.2222  
[www.entosdesign.com](http://www.entosdesign.com)



## Property Contact

### Leasing Team:

**Grant Frerichs**

[grant@reservecappartners.com](mailto:grant@reservecappartners.com)

**c 214.601.0722**

### Property Management:

**Tonie Williamson**

[tonie@reservecappartners.com](mailto:tonie@reservecappartners.com)

**o 214.983.1360**

### 24 Hour Security:

**o 972.273.0300**



The information presented was obtained from sources deemed reliable;  
however, Reserve Capital Partners does not guarantee its completeness or accuracy.

©RESERVE CAPITAL PARTNERS LLC | RESERVECAPPARTNERS.COM

12404 Park Central Dr. Suite 250-S  
Dallas, TX 75251  
214.983.1360