

# INDUSTRIAL FOR LEASE RIVERS CORPORATE PARK

9125 Guilford Road, Columbia, MD 21046

Available: 6,498 SF



## LISTING DATA

**TOTAL SF:** 6,498 SF  
**Office:** 4,874 SF  
**Warehouse:** 1,624 SF

## ECONOMIC DATA

**LEASE RATE:** Call For Info

## PROPERTY INFORMATION

**COUNTY:** Howard  
**MARKET:** Baltimore  
**SUBMARKET:** Columbia South

## BUILDING DATA

**TOTAL BUILDING SF:** 30,278 SF  
**YEAR BUILT:** 1985  
**ZONING:** NT

## PROPERTY OVERVIEW

Beautiful, newly renovated, move-in ready 1st-floor office space

## PROPERTY HIGHLIGHTS

- Easy access to Baltimore and Washington, D.C. via I-95 and Rt. 32 minutes away from Rt. 29
- 4/1,000 sf, free surface parking spaces
- 100% conditioned
- Direct suite entry!
- Plenty of natural light
- Open office, collaborative layout

Kate Jordan, SIOR  
Principal  
410.336.5314  
kjordan@lee-associates.com

Marley Black, SIOR  
Principal  
443.741.4050  
mblack@lee-associates.com

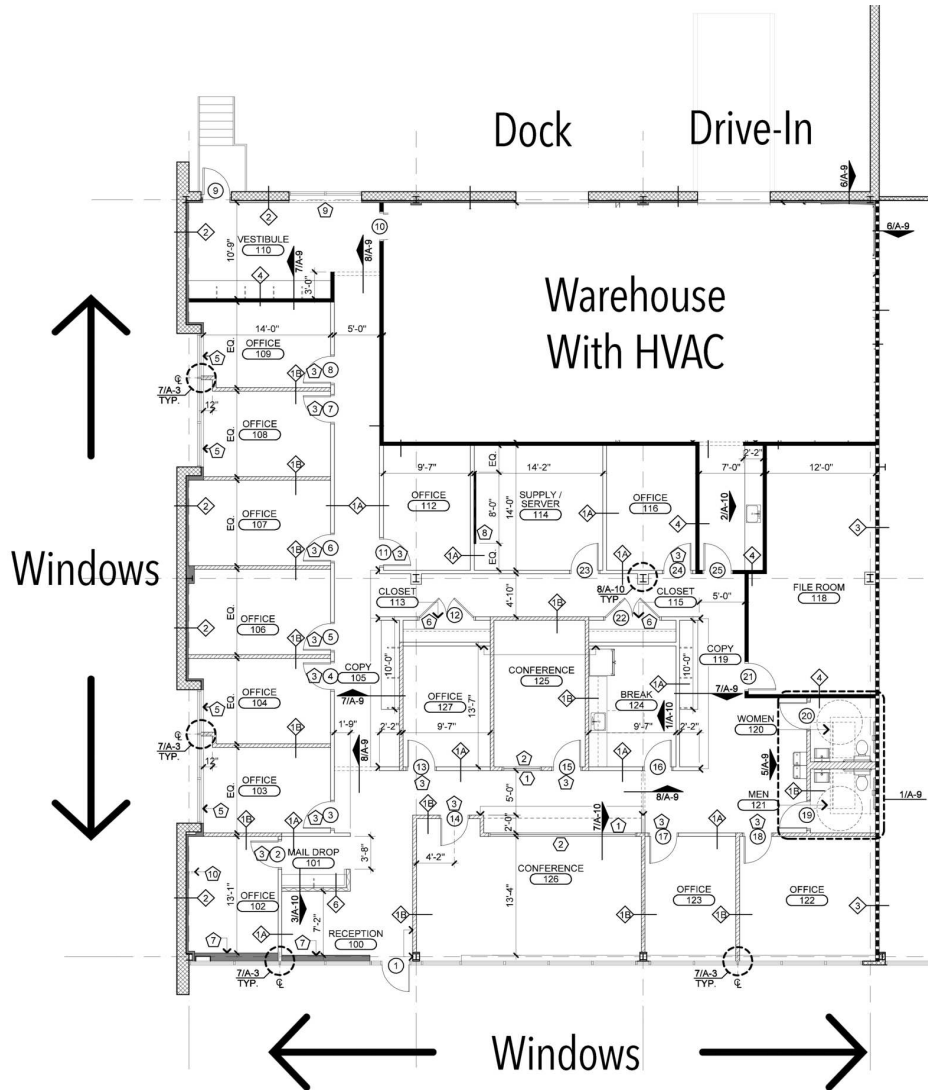
Samantha Eckels  
Associate  
443.741.4047  
seckels@lee-associates.com

All information furnished regarding property for sale, rental or financing is from sources deemed reliable, but no warranty or representation is made to the accuracy thereof and same is submitted to errors, omissions, change of price, rental or other conditions prior to sale, lease or financing or withdrawal without notice. No liability of any kind is to be imposed on the broker herein.

# INDUSTRIAL FOR LEASE RIVERS CORPORATE PARK

9125 Guilford Road, Columbia, MD 21046

Available: 6,498 SF



## AVAILABLE SPACES

SUITE	SIZE (SF)	LEASE TYPE	LEASE RATE
Suite 108	6,498 SF	NNN	Call For Info

Kate Jordan, SIOR  
Principal  
410.336.5314  
kjordan@lee-associates.com

Marley Black, SIOR  
Principal  
443.741.4050  
mblack@lee-associates.com

Samantha Eckels  
Associate  
443.741.4047  
seckels@lee-associates.com

All information furnished regarding property for sale, rental or financing is from sources deemed reliable, but no warranty or representation is made to the accuracy thereof and same is submitted to errors, omissions, change of price, rental or other conditions prior to sale, lease or financing or withdrawal without notice. No liability of any kind is to be imposed on the broker herein.