

840 E King Ave A-C

Kingsland, GA 31548

FOR LEASE

Executive Summary



Offering Summary

Lease Rate	\$10.00 SF/yr
Lease Type	NNN
GSF	11,200 SF
SF Available	5,359 SF
Zoning	C-2

Property Overview

Discover the perfect place to elevate your retail business at 840 E King Ave, Kingsland, GA. This impressive property for lease offers high visibility and a prime location in a thriving commercial hub. Boasting modern design and ample storefront space, the property is ready to accommodate a wide range of retail concepts. With its strategic position and excellent signage opportunities, the property provides an ideal canvas for showcasing your brand and attracting a steady stream of customers. Take advantage of this exceptional opportunity to establish your presence in this dynamic market and join the community of successful retailers in this sought-after location.

Property Highlights

- Outstanding Road Frontage & Visibility
- Extensive Parking For Guests
- Excellent Accessibility & Curb Appeal

Foster Hayes

Director of Property Management
912 638 5450
foster@hcrega.com

Berkshire Hathaway HomeServices Hodnett Cooper Real Estate

520 Ocean Blvd
Saint Simons Island, GA 31522
912.638.5450
[View Website](#)

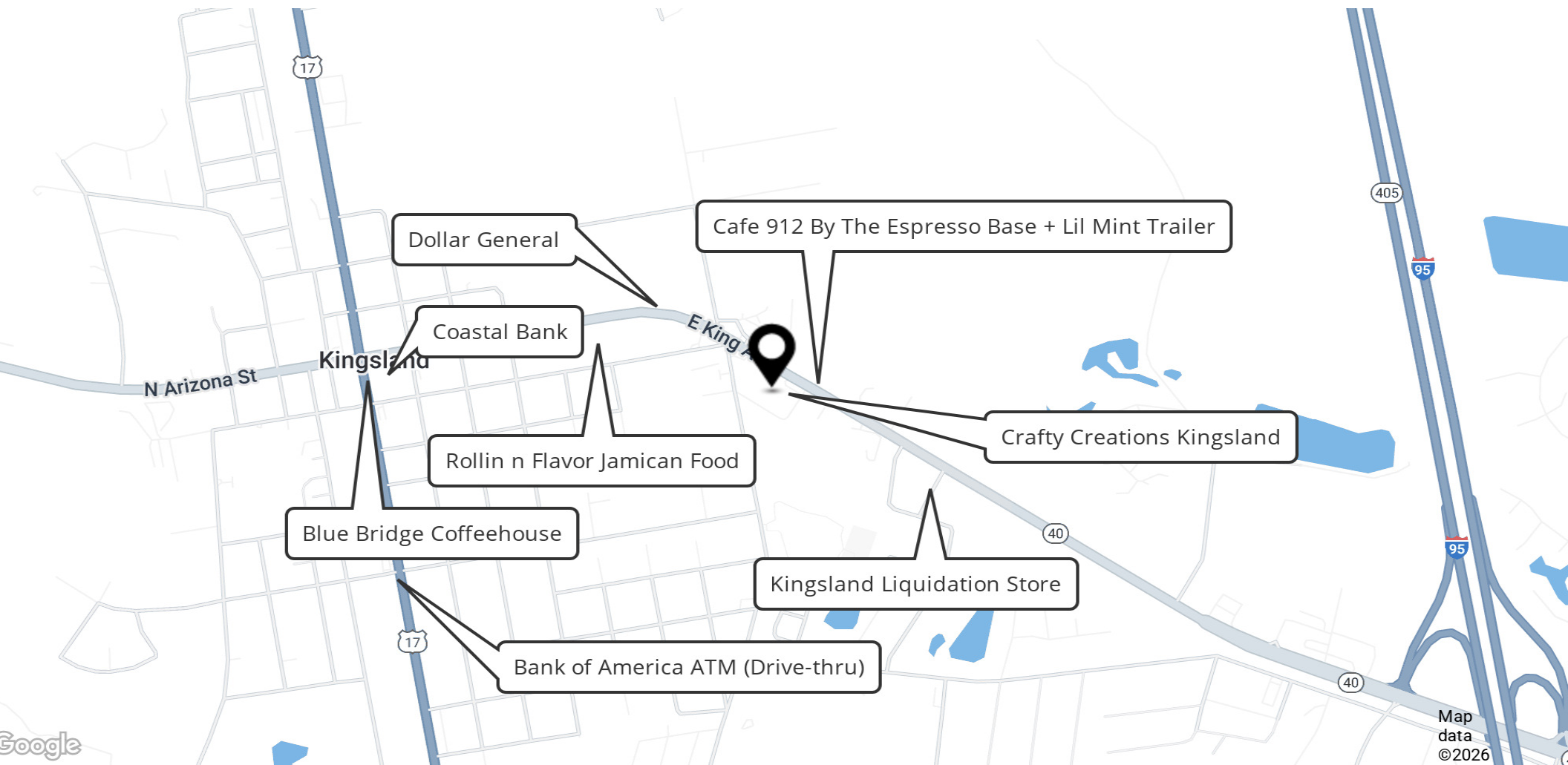
**BERKSHIRE
HATHAWAY** | HODNETT COOPER
HOMESERVICES REAL ESTATE

840 E King Ave A-C

Kingsland, GA 31548

FOR LEASE

Location Map



Foster Hayes

Director of Property Management
912.638.5450
foster@hcrega.com

Berkshire Hathaway HomeServices Hodnett Cooper Real Estate

520 Ocean Blvd
Saint Simons Island, GA 31522
912.638.5450
[View Website](#)

**BERKSHIRE
HATHAWAY**
HOMESERVICES

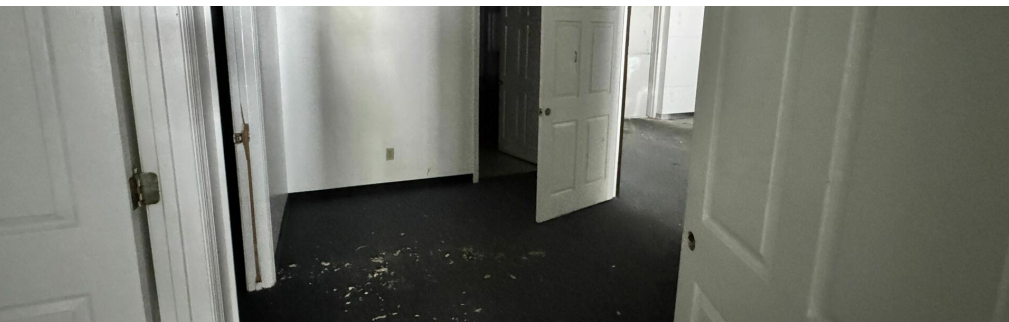
**HODNETT COOPER
REAL ESTATE**

840 E King Ave A-C

Kingsland, GA 31548

FOR LEASE

Additional Photos



840 E King Ave, Kingsland, GA

Main Floor Finished Area 7518.85 sq ft
Unfinished Area 454.34 sq ft



PREPARED: 2025/07/21

ded from total floor area in IGUIDE floor plans. All room dimensions and floor areas must be considered approximate and are subject to independent verification.

Foster Hayes

Director of Property Management
912.638.5450
foster@hcrega.com

Berkshire Hathaway HomeServices Hodnett Cooper Real Estate

520 Ocean Blvd
Saint Simons Island, GA 31522
912.638.5450
[View Website](#)

**BERKSHIRE
HATHAWAY**
HOMESERVICES

**HODNETT COOPER
REAL ESTATE**

840 E King Ave A-C

Kingsland, GA 31548

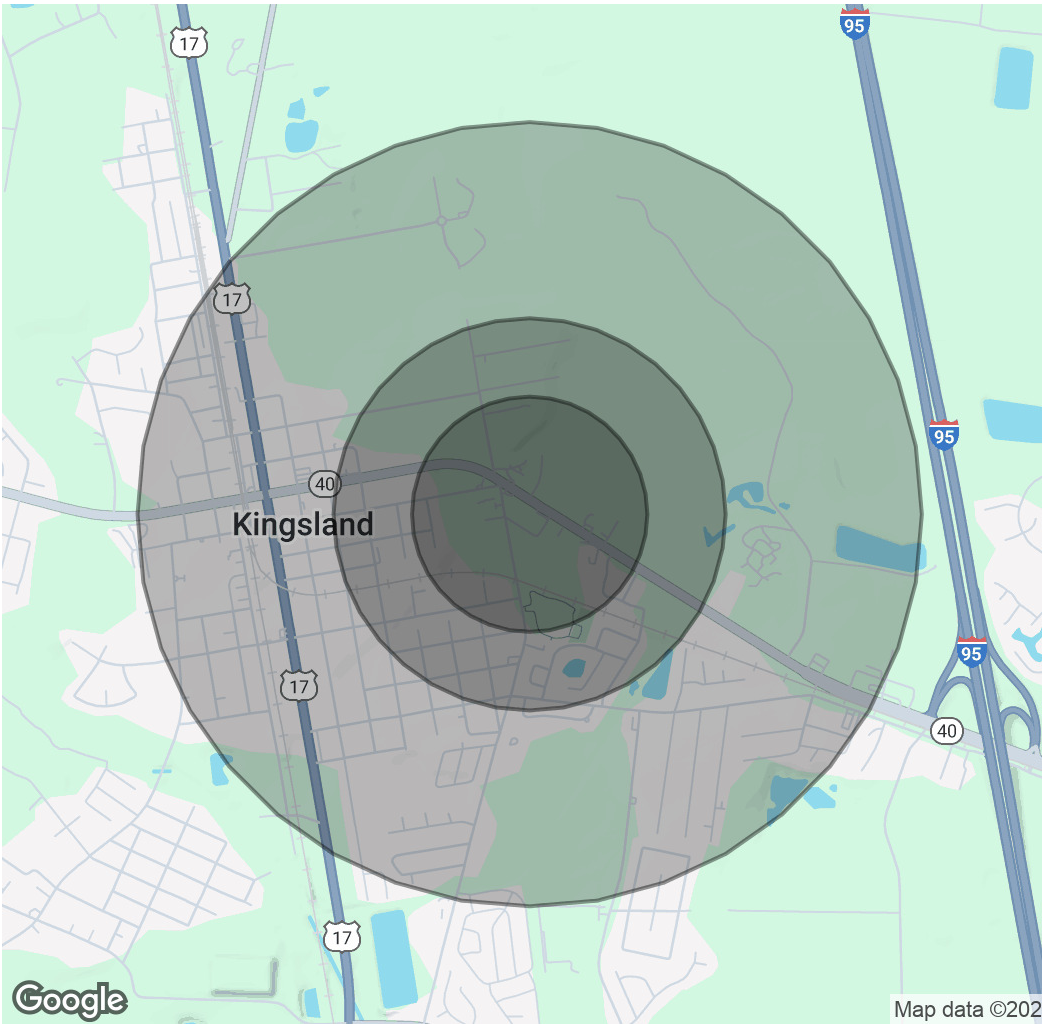
FOR LEASE

Demographics Map & Report

Population	0.3 Miles	0.5 Miles	1 Mile
Total Population	366	916	3,386
Average Age	37	37	37
Average Age (Male)	35	35	36
Average Age (Female)	38	39	39

Households & Income	0.3 Miles	0.5 Miles	1 Mile
Total Households	154	379	1,357
# of Persons per HH	2.4	2.4	2.5
Average HH Income	\$73,799	\$73,418	\$75,446
Average House Value	\$214,201	\$208,434	\$215,466

Demographics data derived from AlphaMap



Foster Hayes
Director of Property Management
912.638.5450
foster@hcrega.com

Berkshire Hathaway HomeServices
Hodnett Cooper Real Estate
520 Ocean Blvd
Saint Simons Island, GA 31522
912.638.5450
[View Website](#)

BERKSHIRE HATHAWAY | HODNETT COOPER
HOMESERVICES | REAL ESTATE