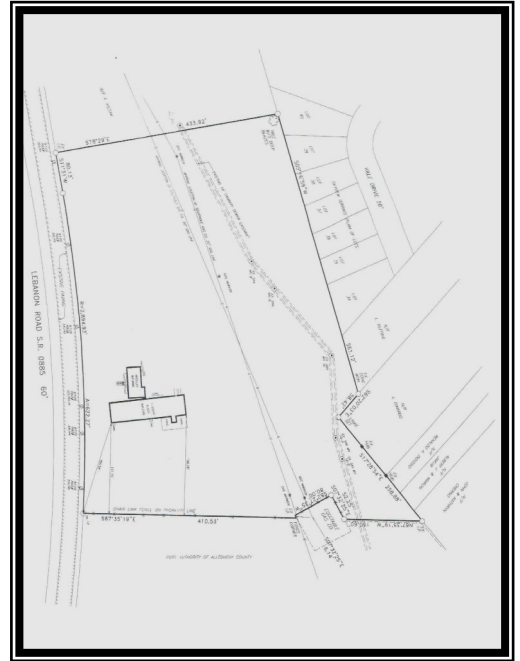


FLEX PROPERTY FOR SALE

929 Lebanon Road, West Mifflin, PA 15122



Details:

- 8.5 Acres (4 to 5 are table flat)
- 1500 Sq. Ft. Office Space
- 4800 Sq. Ft. Warehouse
- 600 Ft. Frontage
- Off Street Parking for 40+ vehicles
- Drive through capability in 3 areas w/12 and 14 ft. doors
- 2 Automotive lifts
- Heated garage/shop space
- Zoned C-2
- Fenced/secured property



Gary McCormick, Broker

McCormick Real Estate & Management

2212 Noblestown Road

Pittsburgh, PA 15205

gary@mccormick-realestate.com

Office: 412-937-0500

CELL: 412-417-9773 Fax: 412-922-6726

www.mccormick-realestate.com

All information furnished regarding this property for sale, rental, or financing is from sources deemed reliable but no warranty or representation is made as to the accuracy thereof and same is submitted subject to errors, omissions, change of price, rental or other conditions prior sale, lease or financing or withdrawal without notice. McCormick Real Estate & Management will make no representation and assume no obligation regarding the presence or absence of toxic or hazardous waste or substances or other undesirable material on or about the property which will ultimately be leased or purchased.