

## D&L PLAZA STOREFRONT FOR LEASE

# 5175 Broadway

Depew, New York



## 3,022 ± SQ. FT. RETAIL ENDCAP

### Building Features

GLA	148,245 ± Sq. Ft.
Available (See Leasing Plan)	3,022 ± Sq. Ft. Endcap

### Property Highlights

- Supermarket Anchored Neighborhood Shopping Center servicing the Depew and Lancaster Communities
- Co-tenants Include: Tops Supermarket, Ace Hardware, Big Lots, Dollar Tree, Sally Beauty Supply, H&R Block, UPS Store, Supercuts, Nickel City BrewZ, Liquor Store
- Densely Populated Surrounding Area
- Ample Parking
- Pylon Signage
- Signalized Entrance
- Professionally Managed



### Traffic Counts

Broadway	18,850 AADT
Transit Road	30,425 AADT

### Contact

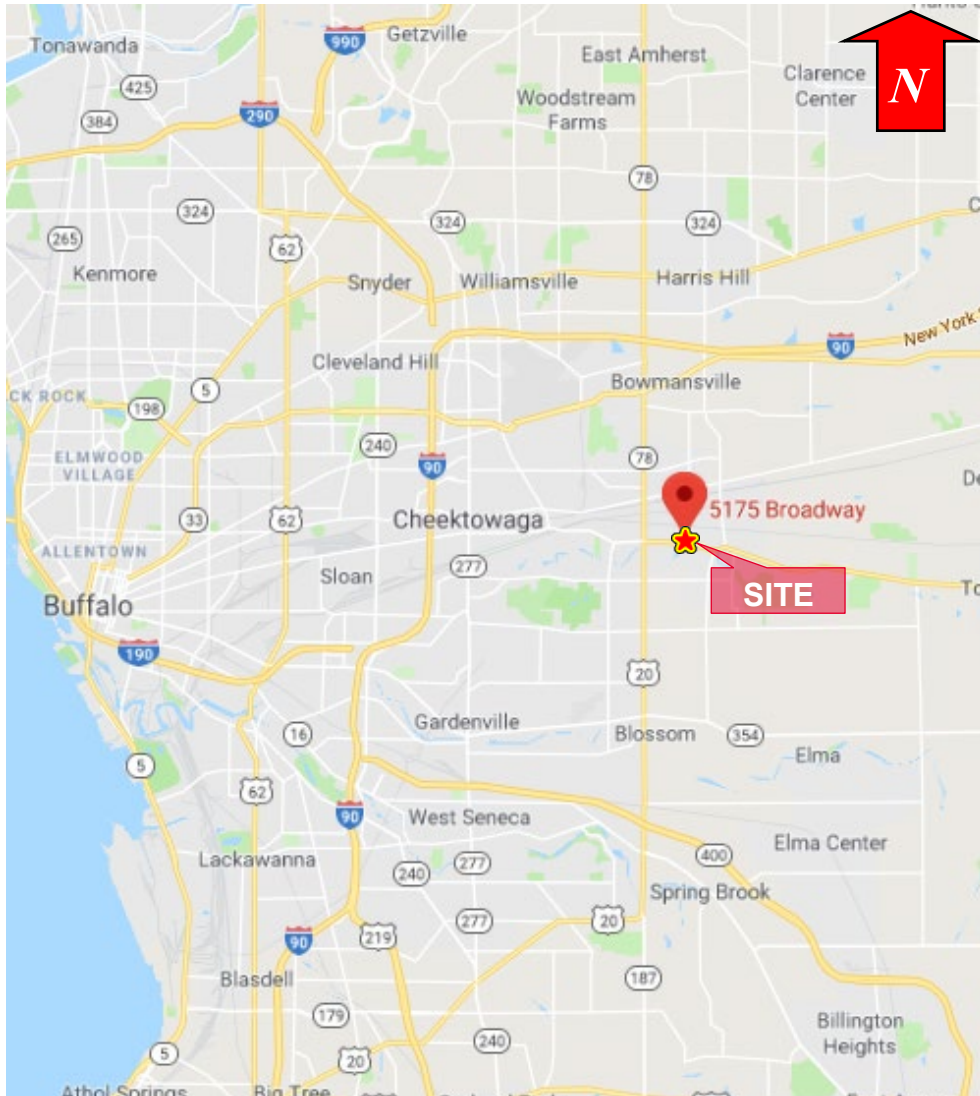
**BENEDICT J. BORRUSO**  
Associate Real Estate Broker  
716 861 5090  
bborruso@pyramidbrokerage.com

14 Lafayette Square, Suite 1900  
Buffalo, New York 14203  
+1 716 852 7500  
pyramidbrokerage.com

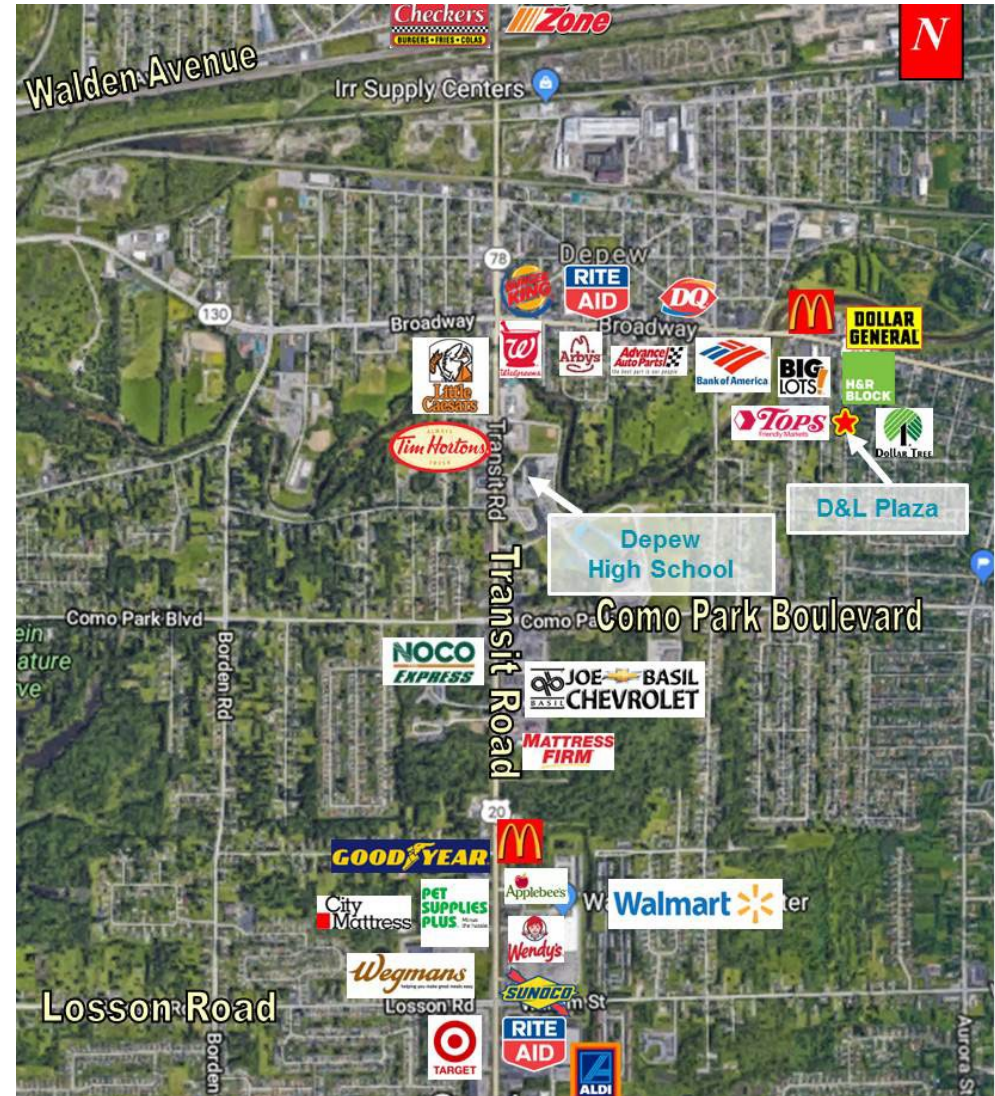


# D&L PLAZA SPACE FOR LEASE

## 5175 Broadway | Depew, NY



Location Map

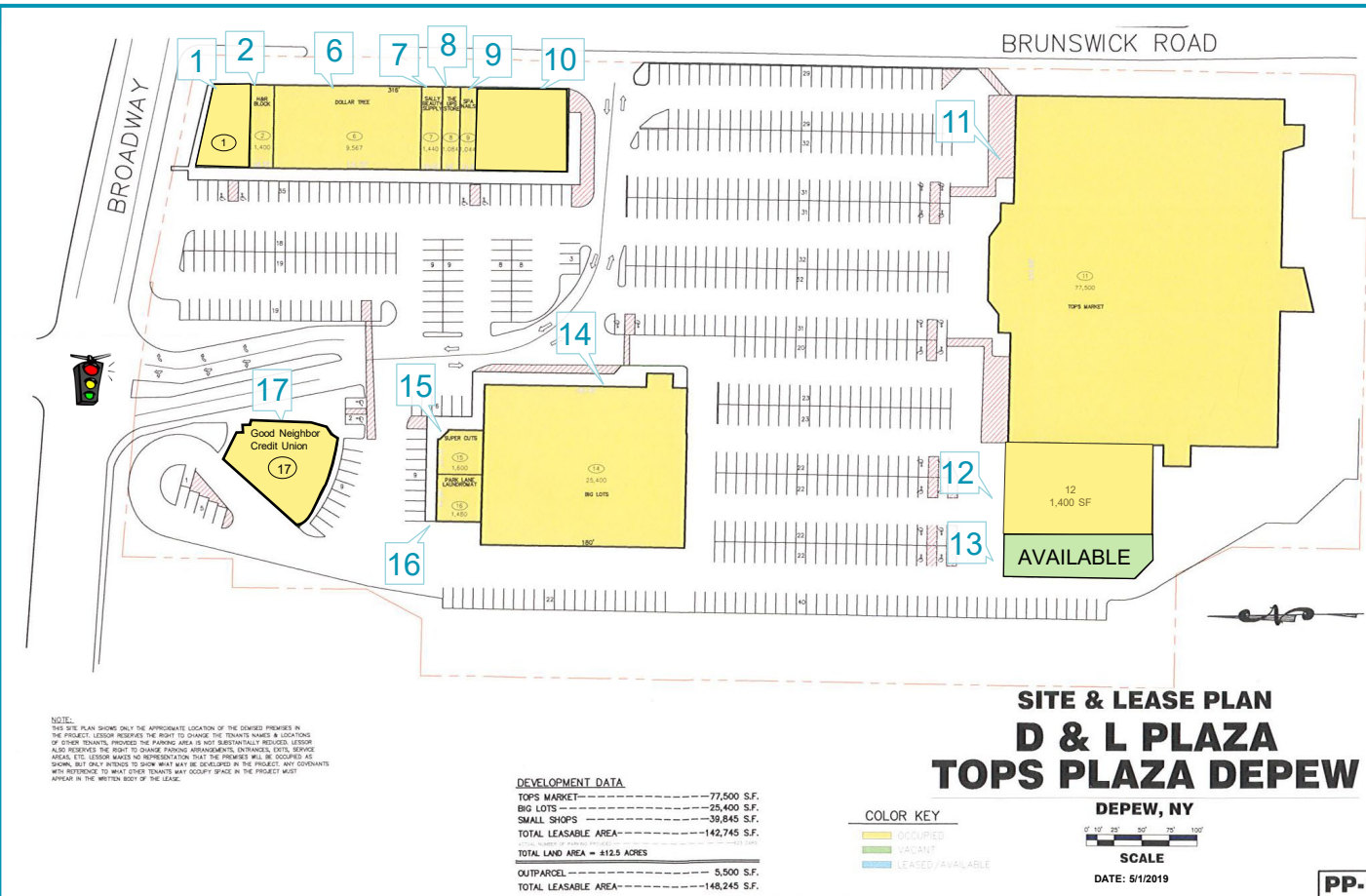


Aerial



# D&L PLAZA SPACE FOR LEASE

## 5175 Broadway | Depew, NY



STREET #	TENANT	SQ. FT.
1	Nickel City BrewZ	2,808
2	H&R Block	1,400
6	Dollar Tree	9,567
7	Sally Beauty	1,440
8	Mail Boxes	1,084
9	Spa Nails	1,044
10	Yellow Brick Wine & liquor	6,000
11	Tops Market	77,500
12	Ace Hardware	10,400
13	Available	3,022
14	Big Lots	25,400
15	Supercuts	1,600
16	Fred's Coin Clean	1,480
17	In Development - Good Neighbor Credit Union	5,500
<b>TOTAL:</b>		<b>148,245</b>

### Leasing Plan