

# 2417

**BINFORD ST**  
GREENSBORO, NC

**15,488 SF-\$10,000/mo  
(MG)**

**FOR  
LEASE**

**INDUSTRIAL BUILDING**

## PROPERTY HIGHLIGHTS

- ±15,488 Total SF
- 1.08 Acres - Zoned Light Industrial
- Office - 3250 SF
- Ceiling Height 13' to 14'
- 1/4 Mile from S Holden Road
- HVAC - Office has Air & Gas Heat, Warehouse has Gas Heat
- Column Spacing Clear
- Construction - Block and Metal, Metal Roof
- Built in 1988

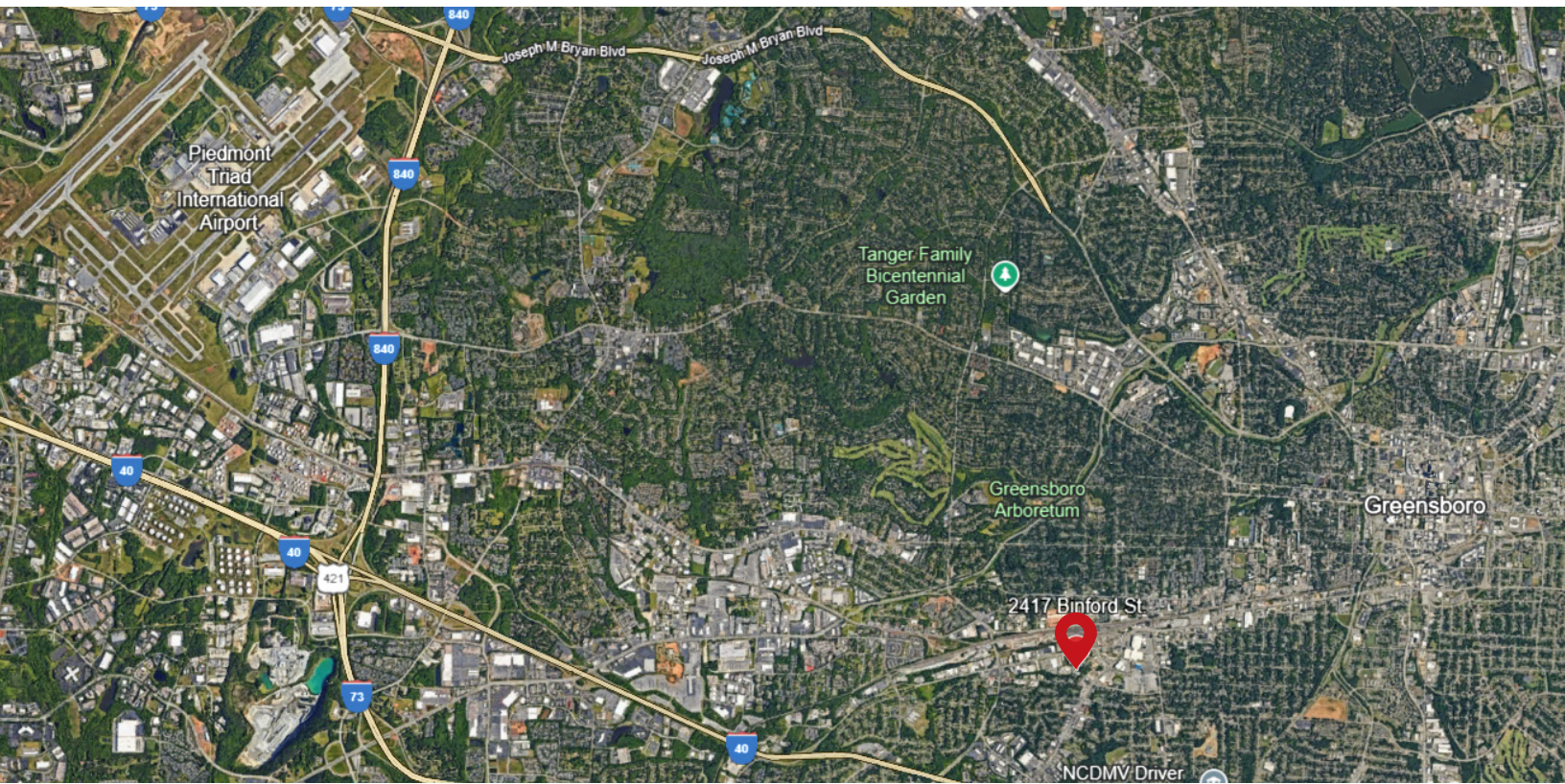


**NAI Piedmont Triad**  
Commercial Real Estate Services, World Wide

**DAN PIERCE, SIOR**  
BROKER  
336.337.7023  
dpierce@naipt.com

348 N. Elm Street • Greensboro, NC 27401 • naipt.com





This material may contain content generated with AI assistance and publicly sourced data. NAI Piedmont Triad makes every effort to verify the information but makes no warranties or representations regarding the accuracy, completeness, or reliability of the information. Independent verification of all details is strongly encouraged. Prices, terms, and availability are subject to change without prior notice.

**DAN PIERCE, SIOR**

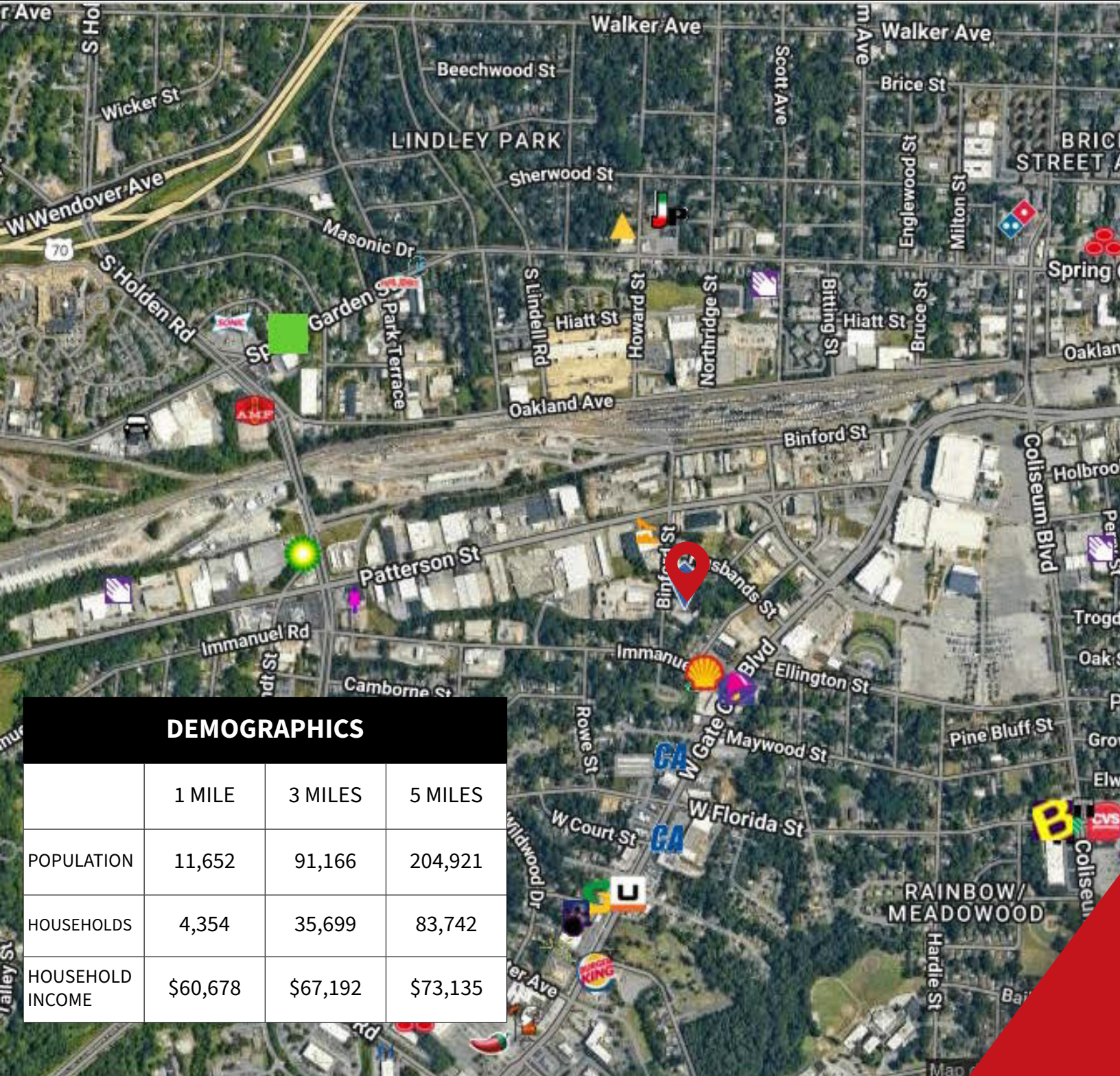
BROKER

336.337.7023

[dpierce@naipt.com](mailto:dpierce@naipt.com)

348 N. Elm Street • Greensboro, NC 27401 • [naipt.com](http://naipt.com)





DEMOGRAPHICS

	1 MILE	3 MILES	5 MILES
POPULATION	11,652	91,166	204,921
HOUSEHOLDS	4,354	35,699	83,742
HOUSEHOLD INCOME	\$60,678	\$67,192	\$73,135

This material may contain content generated with AI assistance and publicly sourced data. NAI Piedmont Triad makes every effort to verify the information but makes no warranties or representations regarding the accuracy, completeness, or reliability of the information. Independent verification of all details is strongly encouraged. Prices, terms, and availability are subject to change without prior notice.