



1660 ASHTON PARK DRIVE, CHESTERFIELD, VA

CONTACT US

Industrial Outdoor Storage & Storage Space Available **For Lease**

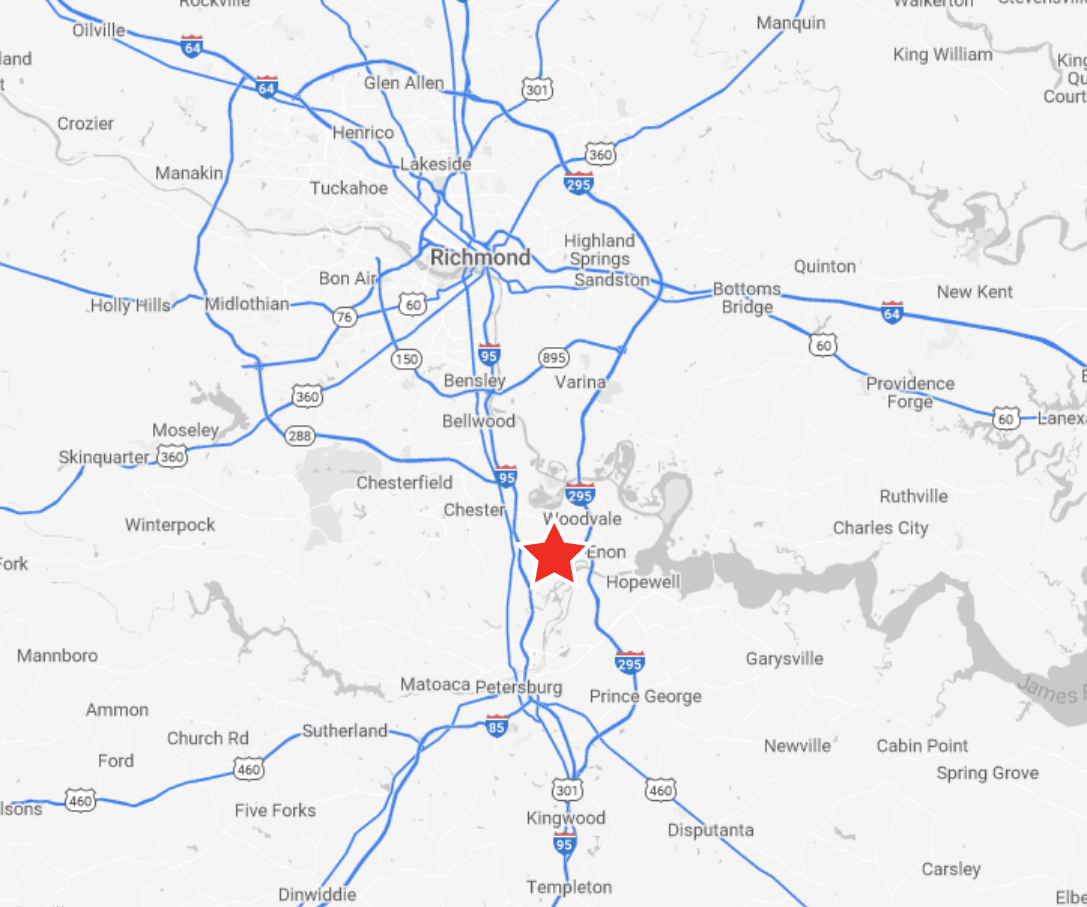
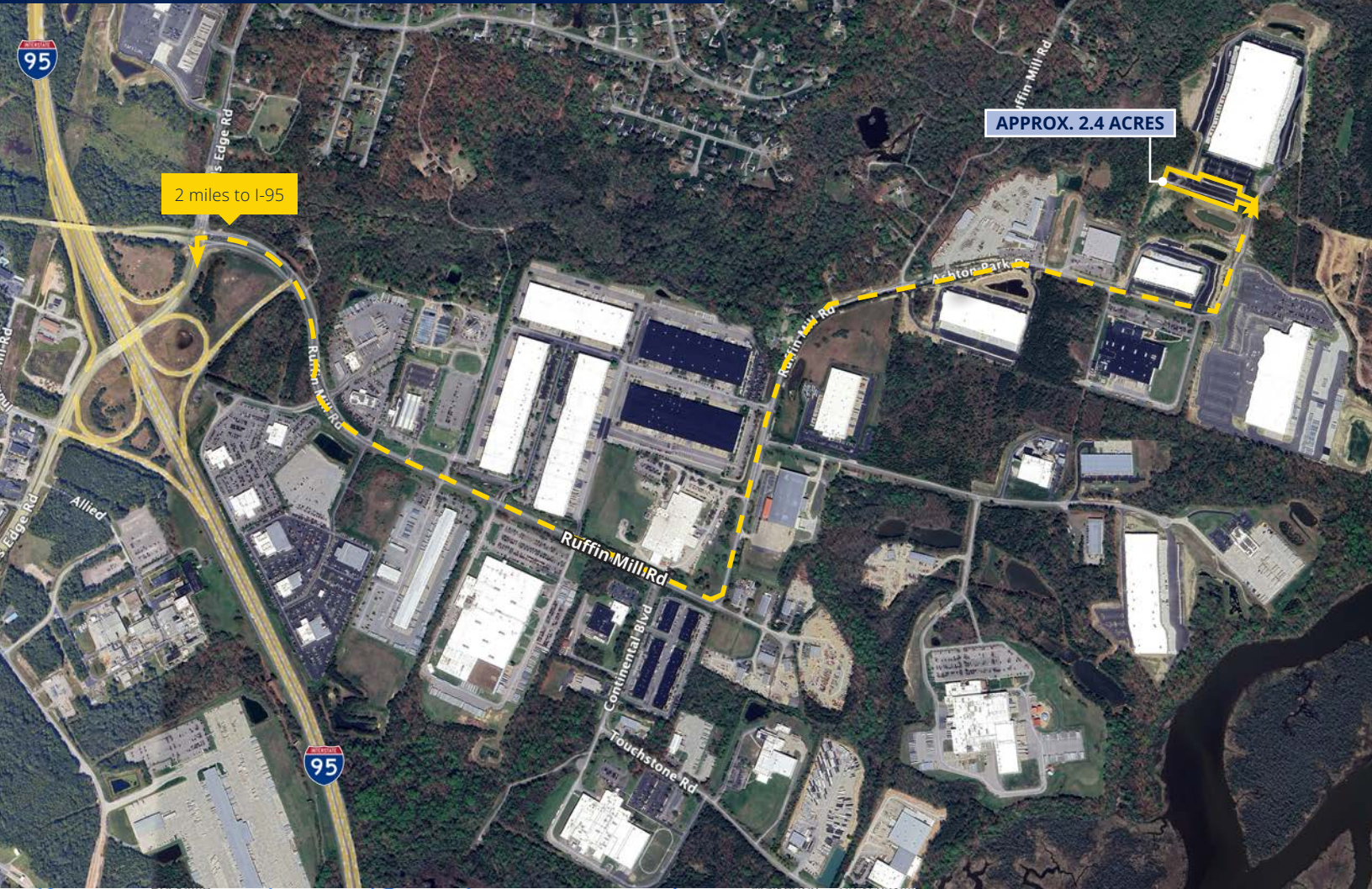
Wood Thornton, SIOR
Senior Vice President
+1 804 267 7221
wood.thornton@colliers.com

- Space available
 - A** Approximately 4.5 acres with a dedicated entrance, including 79 lined trailer drops and 200 lined car parks
 - B** 55 lined trailer drops
 - C** 93 lined trailer drops
- Dedicated entrance
- Up to 20,000 SF of dead storage
- Short term leases available
- Available immediately
- Call or email for pricing

Copyright © 2025 Colliers International. Information herein has been obtained from sources deemed reliable, however its accuracy cannot be guaranteed. The user is required to conduct their own due diligence and verification.

Colliers
2221 Edward Holland Dr
Suite 600 | Richmond, VA
P: +1 804 320 5500
colliers.com

1660 Ashton Park Drive, Chesterfield, VA



CONTACT US

Wood Thornton, SIOR
Senior Vice President
+1 804 267 7221
wood.thornton@colliers.com

