

MERCYONESM

1601 NW 114th, Clive, IA



FOR LEASE

TURNKEY MEDICAL OFFICE

UP TO 7,002 SF CONTIGUOUS



Clive Premiere Healthcare Facility

Discover turnkey medical space in Clive, where your practice can thrive immediately upon move-in. Located in a growing healthcare corridor with excellent visibility and accessibility, this facility eliminates the extensive build-out typically required for medical spaces, allowing physicians and healthcare providers to focus on patient care rather than construction delays.



Our Plug and Play medical facility offers fully equipped examination rooms, modern infrastructure and strategically designed layouts that meet healthcare compliance standards.



Class A Medical Space



Complementary valet parking



Easy access to Interstate 80/35

LEASE RATE

\$17.50 NNN

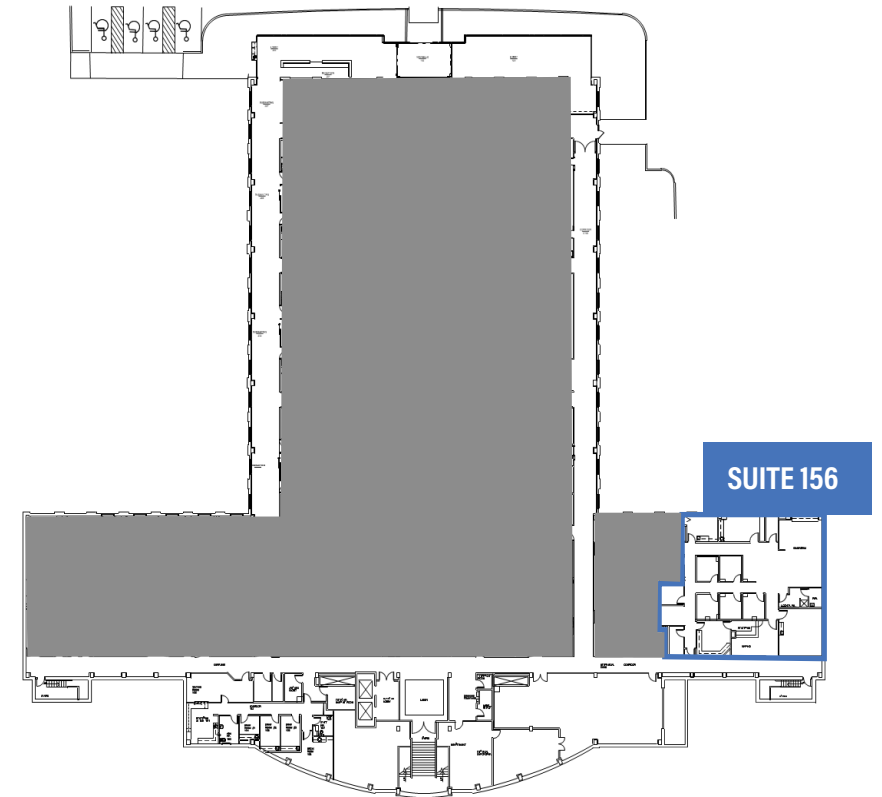


Availability

Max Contiguous 7,002 SF

FIRST FLOOR

Suite 156: 4,187 SF

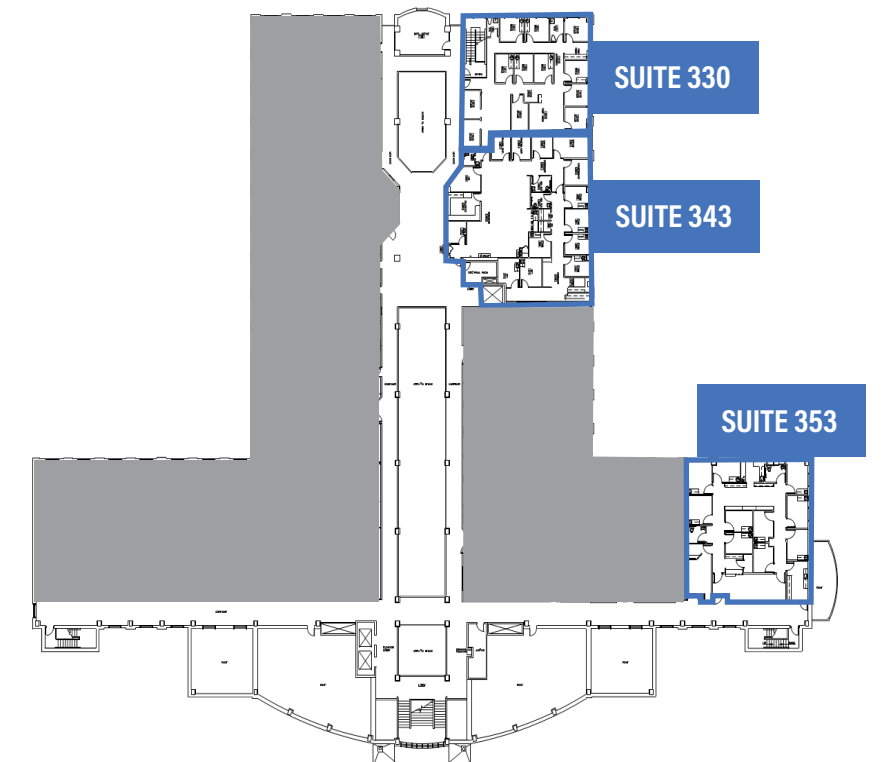


THIRD FLOOR

Suite 330: 2,753 SF

Suite 343: 4,249 SF

Suite 353: 3,400 SF



Clive, IA

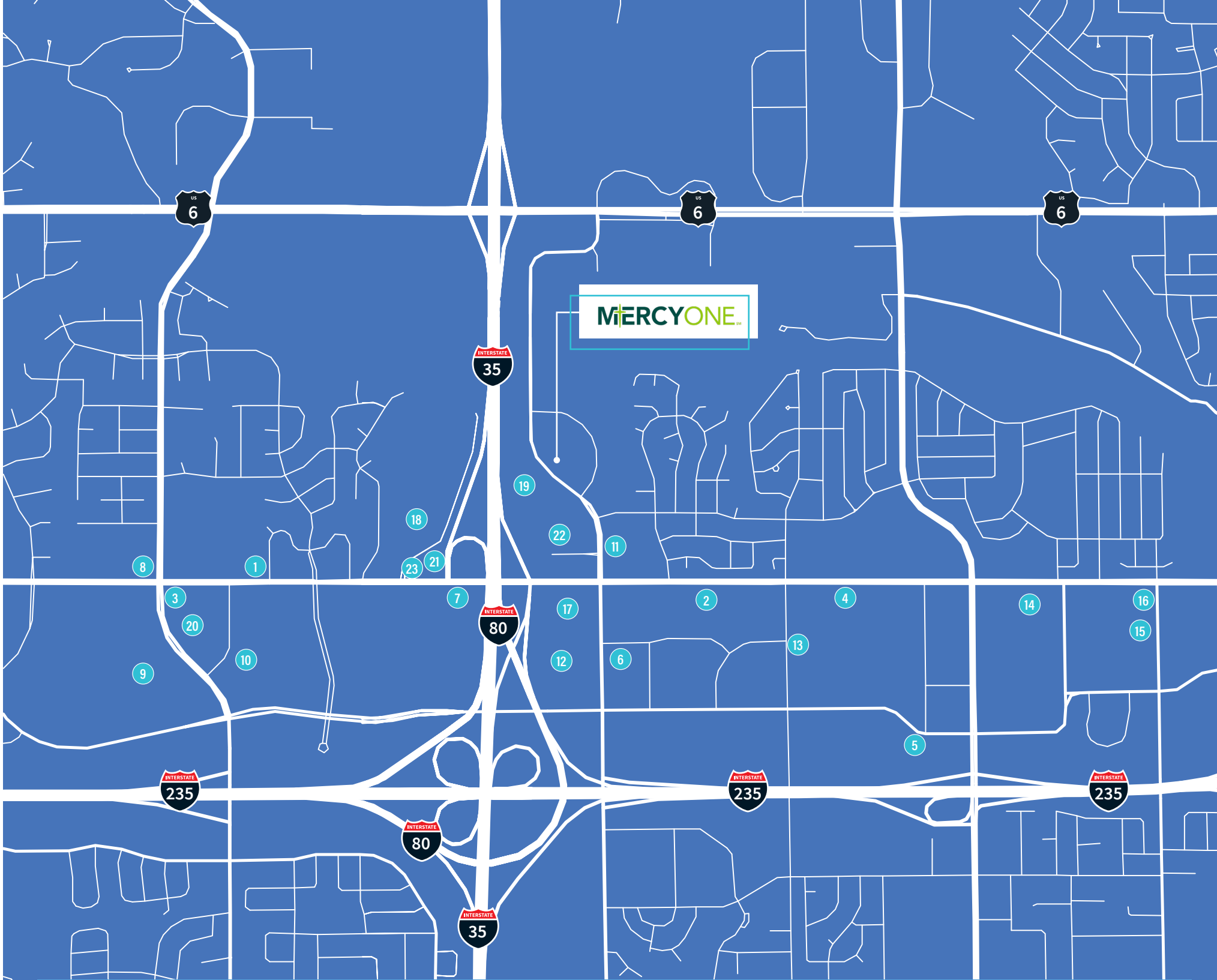
Strategically situated in the heart of Clive's thriving medical corridor, this location offers unparalleled convenience for both practitioners and patients alike. Adjacent to major transportation arteries including I-235 and I-80, the facility ensures effortless accessibility from throughout the Des Moines metro area, complemented by ample dedicated parking. This rapidly developing area has become a healthcare destination, surrounded by complementary medical services, pharmacies, imaging centers, and laboratories, fostering natural referral networks. The immediate neighborhood features upscale amenities including dining options and retail establishments at nearby Jordan Creek Town Center, creating an attractive environment for both staff retention and patient comfort.

Drive Times

2 Min I-80	5 Min I-235	15 Min Downtown Des Moines	19 Min To Des Moines International Airport
----------------------	-----------------------	---	---

Demographics

	1 mile	3 mile	5 mile
Population	7,290	74,768	191,330
Median Age	39.4	38.2	37.4
Average Household Income	112,751	135,932	134,453



- | | | |
|---|--|---|
| 1. The Other Place Clive | 9. UnityPoint Health - Methodist West Hospital | 17. Sheraton West Des Moines Hotel |
| 2. Chick-fil-A | 10. MercyOne West Des Moines Medical Center | 18. Country Inn & Suites by Radisson, Des Moines West, IA |
| 3. Biaggi's Ristorante Italiano | 11. Izumi Sushi & Hibachi All You Can Eat | 19. Courtyard Des Moines West/Clive |
| 4. HuHot Mongolian Grill | 12. Lowe's Home Improvement | 20. The Iowa Clinic West Des Moines Campus |
| 5. Olive Garden Italian Restaurant | 13. Whole Foods Market | 21. Cracker Barrel Old Country Store |
| 6. Tavern Pizza & Pasta Grill | 14. Valley West Mall | 22. Chili's Grill & Bar |
| 7. Burger King | 15. Waterfront Seafood Market | 23. Wendy's |
| 8. Cooper's Hawk Winery & Restaurant- Clive, IA | 16. Brazil Terra Grill Steakhouse | |



JUSTIN LOSSNER, CCIM, SIOR

Senior Managing Director

+1 515 371 0846

justin.lossner@jll.com

THOMAS EDWARDS

Associate

+1 515 802 4684

thomas.edwards@jll.com

LUCAS HEDSTROM

Vice President

+1 515 564 9269

lucas.hedstrom@jll.com

Although information has been obtained from sources deemed reliable, neither Owner nor JLL makes any guarantees, warranties or representations, express or implied, as to the completeness or accuracy as to the information contained herein. Any projections, opinions, assumptions or estimates used are for example only. There may be differences between projected and actual results, and those differences may be material. The Property may be withdrawn without notice. Neither Owner nor JLL accepts any liability for any loss or damage suffered by any party resulting from reliance on this information. If the recipient of this information has signed a confidentiality agreement regarding this matter, this information is subject to the terms of that agreement. ©2025 Jones Lang LaSalle IP, Inc. All rights reserved.