

FOR SALE OR LEASE

1,295 SF Office/ Warehouse with Yard

241 NE 32ND COURT

Oakland Park, FL 33334

PRESENTED BY:

STEVE DAVIS

C: 954.650.7824
steve@svncr.com

KEITH KIDWELL, SIOR, CCIM

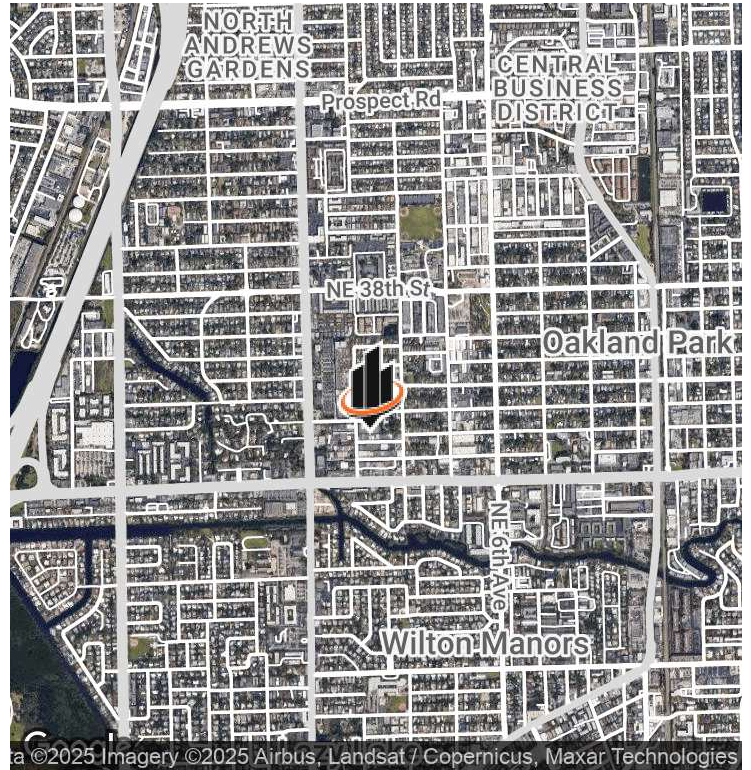
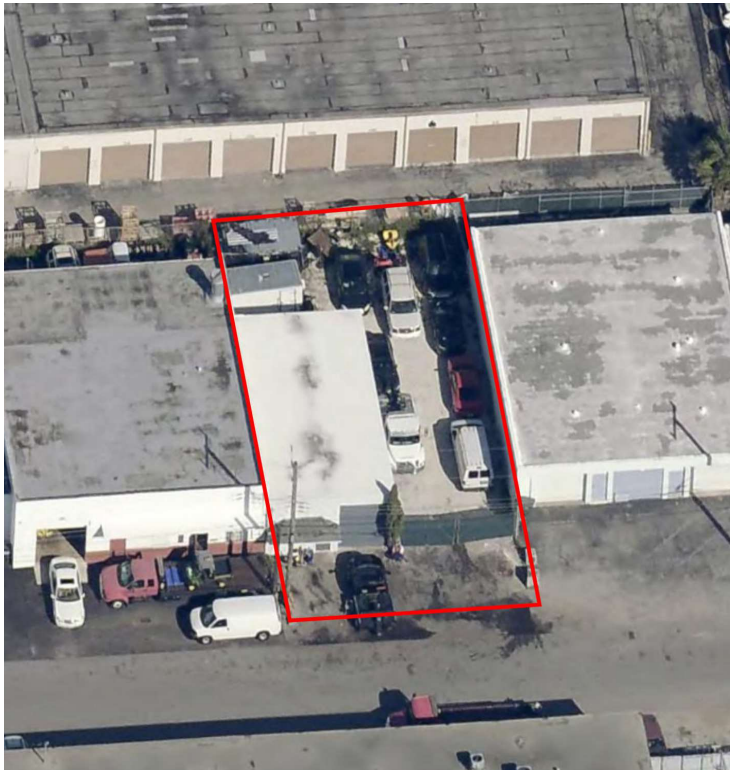
C: 954.234.8777
keith@svncr.com

LES BYRON, SIOR, CCIM

C: 954.401.4713
les@svncr.com



PROPERTY SUMMARY



OFFERING SUMMARY

SALE PRICE:	\$850,000
LEASE RATE:	\$6,500/Monthly
BUILDING SIZE:	1,295 SF
LOT SIZE:	4,858 SF
YEAR BUILT:	1967
ZONING:	I-1
APN:	49-42-22-20-0710

PROPERTY OVERVIEW

For sale or lease 1,295 SF freestanding office/warehouse building with yard. Ideal location for all types of service companies and light manufacturers. Easy access to I-95.

PROPERTY HIGHLIGHTS

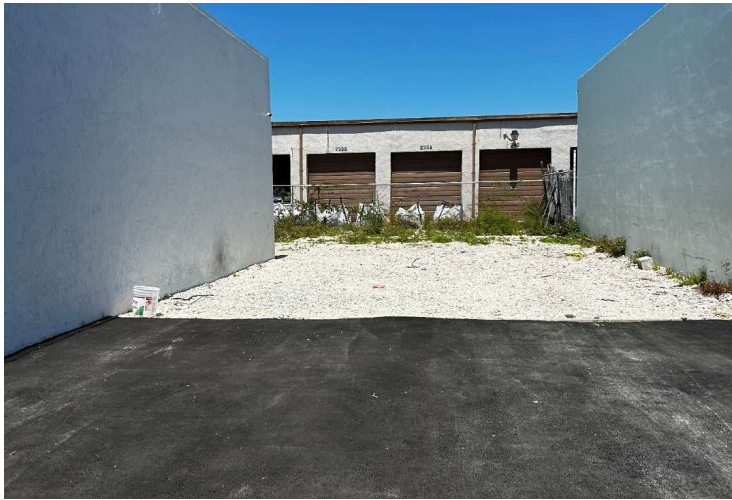
- Two (2) Grade Level Overhead Doors (12' H & 8' H)
- 10' x12' High Front Door
- 12' Clear Concrete Roof
- Drive Thru Bay to Yard
- Fully Fenced & Gated
- New LED Lighting Throughout
- Mini Split AC in Office
- Epoxy Floors in Office
- Storage Loft Above Office
- Possible Man Cave
- Immediate Occupancy
- I-1 Zoning, City of Oakland Park

STEVE DAVIS
C: 954.650.7824
steve@svncr.com

KEITH KIDWELL, SIOR, CCIM
C: 954.234.8777
keith@svncr.com

LES BYRON, SIOR, CCIM
C: 954.401.4713
les@svncr.com

ADDITIONAL PHOTOS



STEVE DAVIS
C: 954.650.7824
steve@svncr.com

KEITH KIDWELL, SIOR, CCIM
C: 954.234.8777
keith@svncr.com

LES BYRON, SIOR, CCIM
C: 954.401.4713
les@svncr.com