

901

DeKalb Avenue
Brooklyn, NY 11221

EXCLUSIVE LISTING / For Lease | Bedford-Stuyvesant Ground Floor Retail Unit
Prime Shopping Block | 700 SF Ground Floor + 1,560 SF Full Basement

Asking Rent: \$3,900/Monthly

Size: 700 SF – Ground Floor
1,560 SF – Full Basement
2,260 SF Total Rentable SF

Asking Rent: \$3,900 Per Month

Ideal Uses:

❖ Dry use	❖ Nail salon
❖ Sushi restaurant	❖ Hair salon
❖ Beauty salon	❖ Food use
❖ Showroom	❖ Professional office
❖ Bakery	❖ Medical use

Offering Description:

Premiere Real Estate Group Inc. presents the exclusive opportunity to lease a prime ground floor retail space at 901 Dekalb Avenue in the Bedford-Stuyvesant neighborhood of Brooklyn. The unit offers 700 square-foot of rentable space on the ground floor plus a 1,560 square-foot full basement ideal for storage or supplemental operations. The space is part of a well-maintained 4-story mixed-use building surrounded by a strong residential base and a busy local and high foot traffic retail corridor.

Conveniently located near multiple subway lines such as the J, M, Z, G trains and bus routes, the property offers excellent accessibility. Benefiting from strong visibility, consistent pedestrian activity, and proximity to established residential and commercial developments, this space presents an attractive leasing opportunity for both investors and operators. The space is also located within a 13-minute walk to Woodhull Hospital. Ideal uses include dry use, sushi restaurant, beauty salon, showroom, bakery, nail or hair salon, food, professional, and medical uses.



CONTACT:

Shawn Sadaghati

Premiere Real Estate Group Inc.

Licensed Real Estate Broker

Email: Shawn@pregcorp.com

Mobile: 917-796-7475 | Office: 516-355-9307

901

DeKalb Avenue
Brooklyn, NY 11221

EXCLUSIVE LISTING / For Lease | Bedford-Stuyvesant Ground Floor Retail Unit
Prime Shopping Block | 700 SF Ground Floor + 1,560 SF Full Basement

Asking Rent: \$3,900/Monthly

PROPERTY PHOTOS



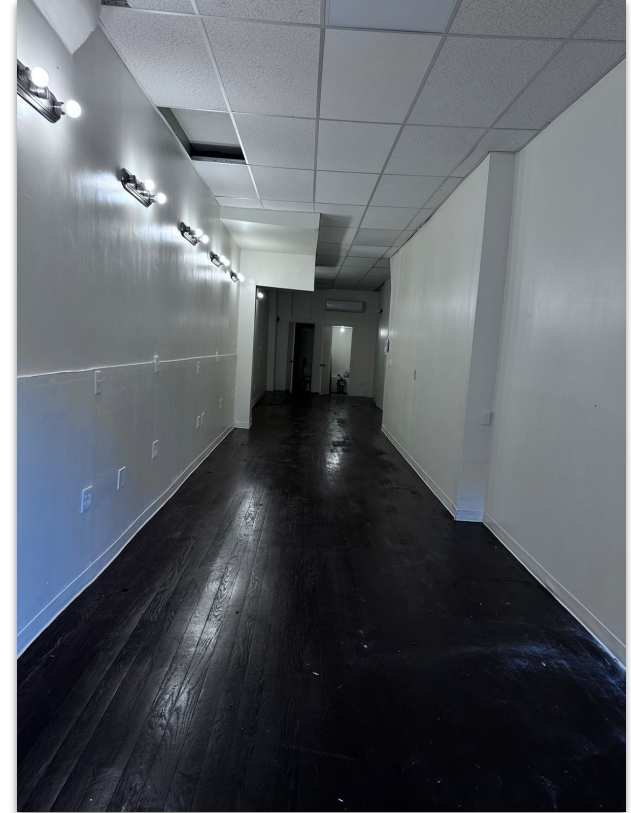
901

DeKalb Avenue
Brooklyn, NY 11221

EXCLUSIVE LISTING / For Lease | Bedford-Stuyvesant Ground Floor Retail Unit
Prime Shopping Block | 700 SF Ground Floor + 1,560 SF Full Basement

Asking Rent: \$3,900/Monthly

PROPERTY PHOTOS



901

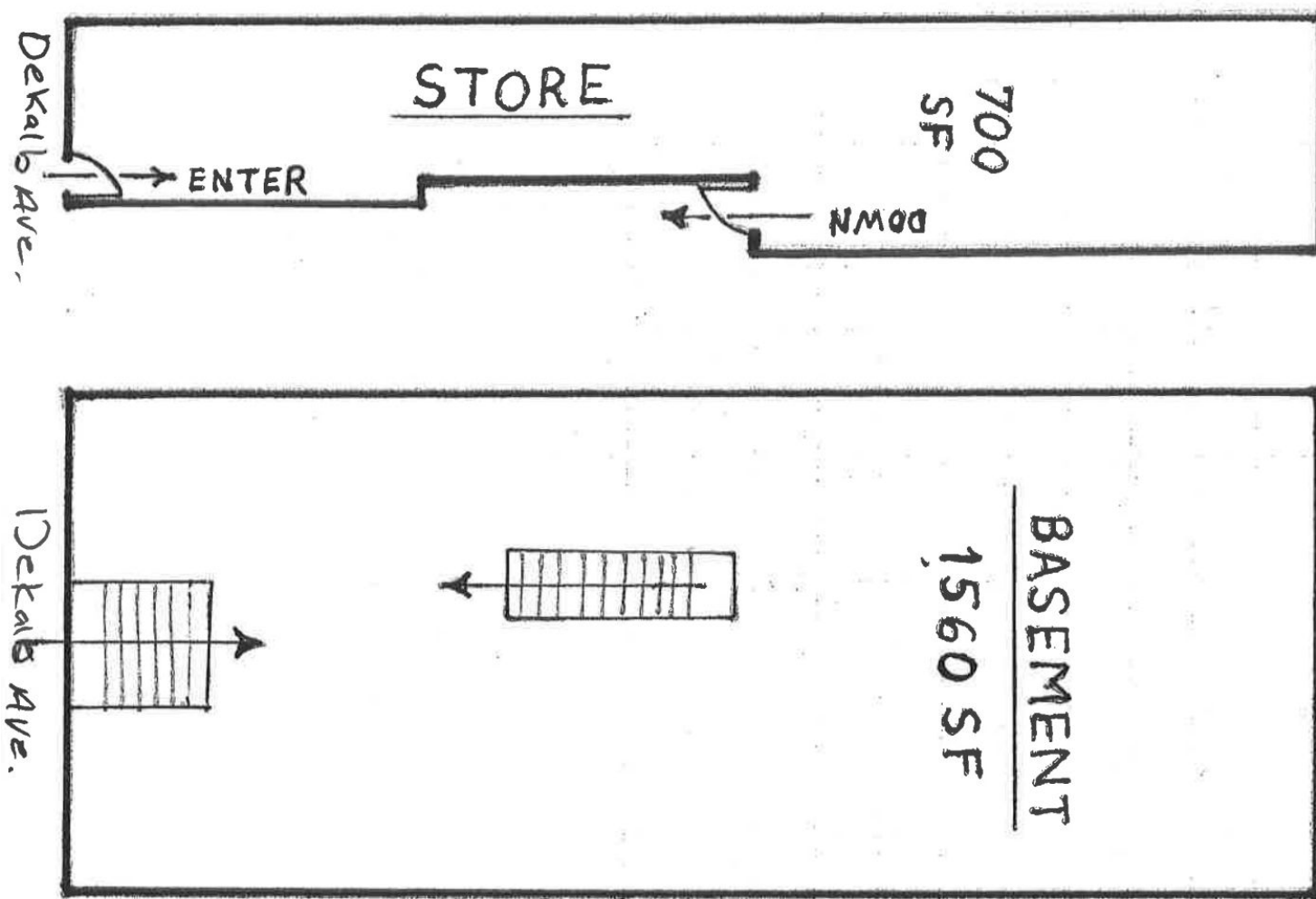
DeKalb Avenue
Brooklyn, NY 11221

EXCLUSIVE LISTING / For Lease | Bedford-Stuyvesant Ground Floor Retail Unit

Prime Shopping Block | 700 SF Ground Floor + 1,560 SF Full Basement

Asking Rent: \$3,900/Monthly

FLOOR PLAN



901

DeKalb Avenue
Brooklyn, NY 11221

EXCLUSIVE LISTING | For Lease | Bedford-Stuyvesant Ground Floor Retail Unit
Prime Shopping Block | 700 SF Ground Floor + 1,560 SF Full Basement

Asking Rent: \$3,900/Monthly

AERIAL VIEW



Although all information furnished regarding property for sale, rental, or financing is from sources deemed reliable, such information has not been verified and no express representation is made nor is any to be implied as to the accuracy thereof and it is submitted subject to errors, omissions, change of price, rental or other conditions, prior sale, lease or financing, or withdrawal without notice and to any special conditions imposed by our principal.

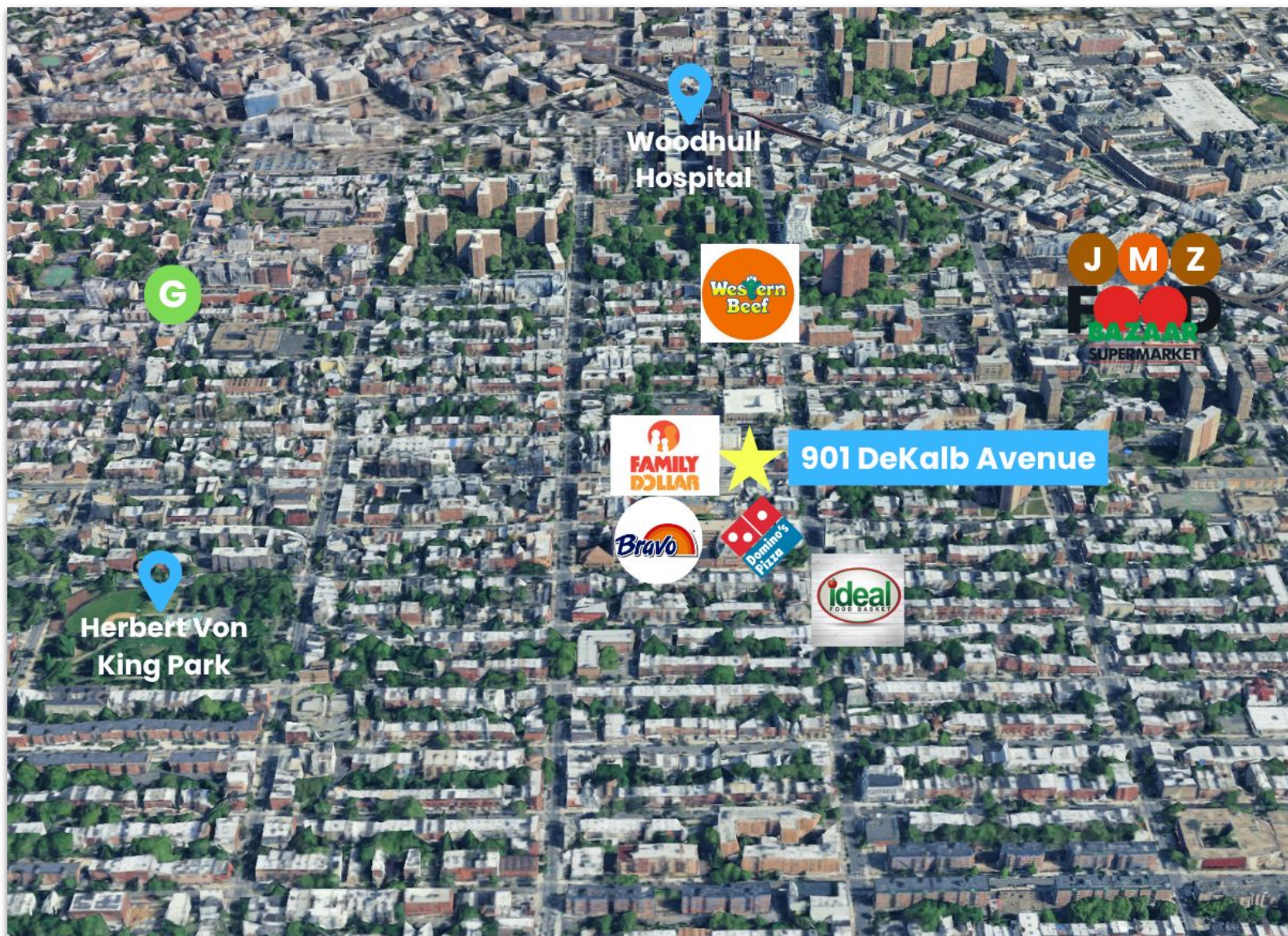
901

DeKalb Avenue
Brooklyn, NY 11221

EXCLUSIVE LISTING | For Lease | Bedford-Stuyvesant Ground Floor Retail Unit
Prime Shopping Block | 700 SF Ground Floor + 1,560 SF Full Basement

Asking Rent: \$3,900/Monthly

SURROUNDING RETAIL



Although all information furnished regarding property for sale, rental, or financing is from sources deemed reliable, such information has not been verified and no express representation is made nor is any to be implied as to the accuracy thereof and it is submitted subject to errors, omissions, change of price, rental or other conditions, prior sale, lease or financing, or withdrawal without notice and to any special conditions imposed by our principal.

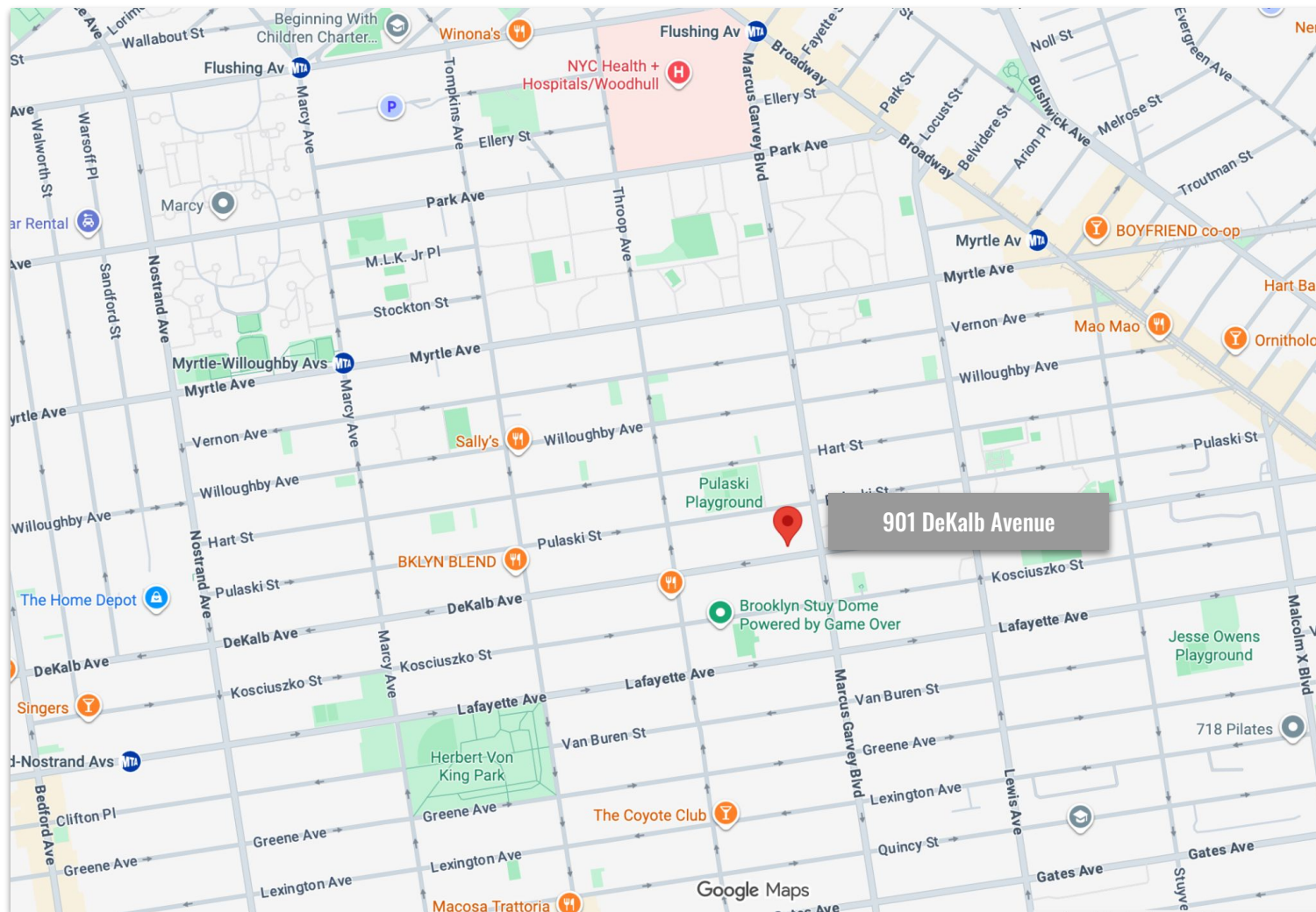
901

DeKalb Avenue
Brooklyn, NY 11221

EXCLUSIVE LISTING | For Lease | Bedford-Stuyvesant Ground Floor Retail Unit
Prime Shopping Block | 700 SF Ground Floor + 1,560 SF Full Basement

Asking Rent: \$3,900/Monthly

PROPERTY MAP



Nearby Retail

- Family Dollar
- Western Beef
- Bravo Supermarkets
- Ideal Food Basket
- Food Bazaar
- Lincoln Market
- The Home Depot

Nearby Restaurants

- Blossom's Soul Food Fusion
- Sonbul - Korean Cafe
- BKLYN BLEND
- Sweets for Sweeties
- Domino's Pizza
- Ava's Lifeline
- Rocco Pizza
- Tulum Brooklyn
- Ornithology Jazz Club
- Mao Mao
- Paragon

Amenities/Attractions

- Herbert Von King Park
- Woodhull Hospital
- J, M, Z, G Trains