

# Renovated First & Second Floor Office Units For Lease

## Situated Off The Alameda With Quick Access To Hwy 880

1130-1132 McKendrie Street, San Jose



**KEON VOSSOUGH**  
Vice President  
Lic. #01019117  
408.691.9776  
keon@moinc.net

**BOBBY FACCHINO**  
Senior Associate  
Lic. #02178873  
408.318.0623  
bobby@moinc.net

MEACHAM/OPPENHEIMER, INC.  
8 N San Pedro St. #300  
San Jose, CA 95110  
408.378.5900  
[www.moinc.net](http://www.moinc.net)



# Renovated 1<sup>st</sup> & 2<sup>nd</sup> Floor Office Units For Lease

## 1130-1132 McKendrie Street, San Jose

- Located Right Near HWY 880
- Parking in Rear Of The Building
- Front Door & Back Door Access

### 1<sup>st</sup> Floor Office Space

- Space Available: 1,208± SF
- Rent: \$3,500/Month
- Large Main Reception Area
- Three Private Office Spaces
- One Private Bathroom
- Includes A Kitchenette Area
- Front & Rear Door Access

### 2<sup>nd</sup> Floor Office Space

- Unit B: 500± SF
- Rent: \$1000/Month
- One Private Bathroom
- Includes A Kitchenette Area
- Access is in The Front Up The Stairs & in The Rear  
Down The Stairs

# 1<sup>st</sup> Floor Photos



# 1<sup>st</sup> Floor: 1,208± SF



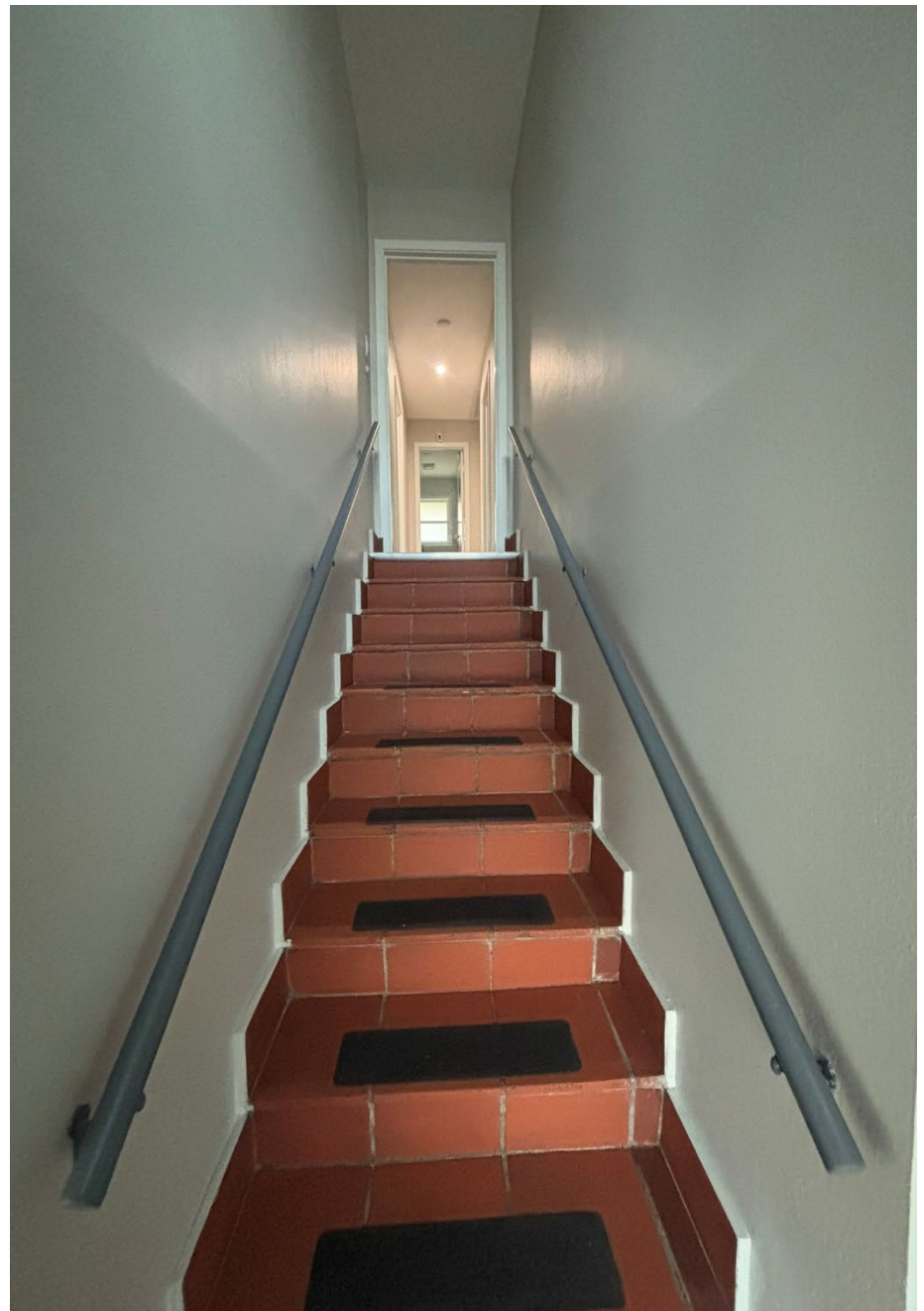
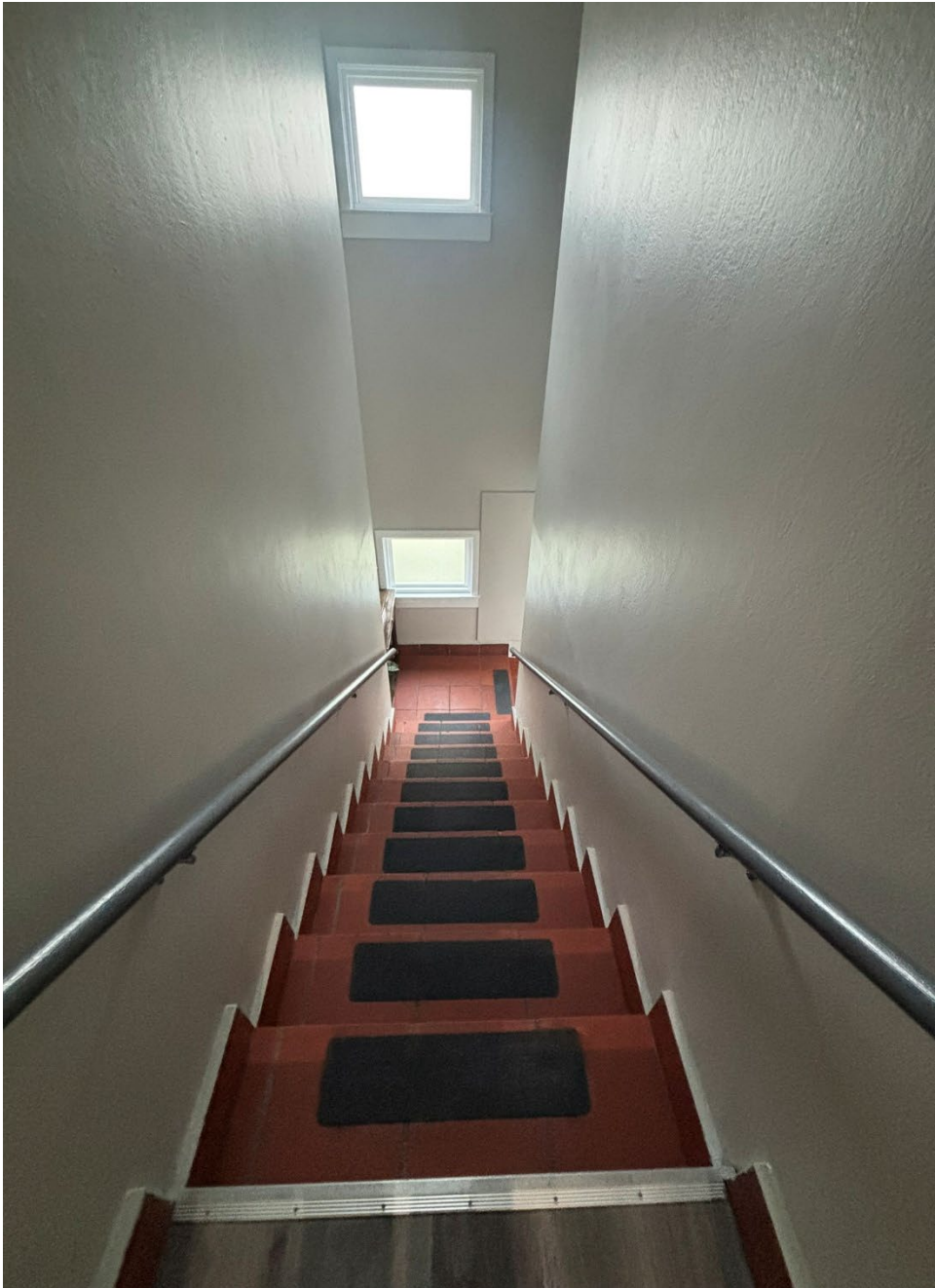
# 2<sup>nd</sup> Floor Unit B: 500± SF



## 2<sup>nd</sup> Floor Shared Kitchen & Bathroom



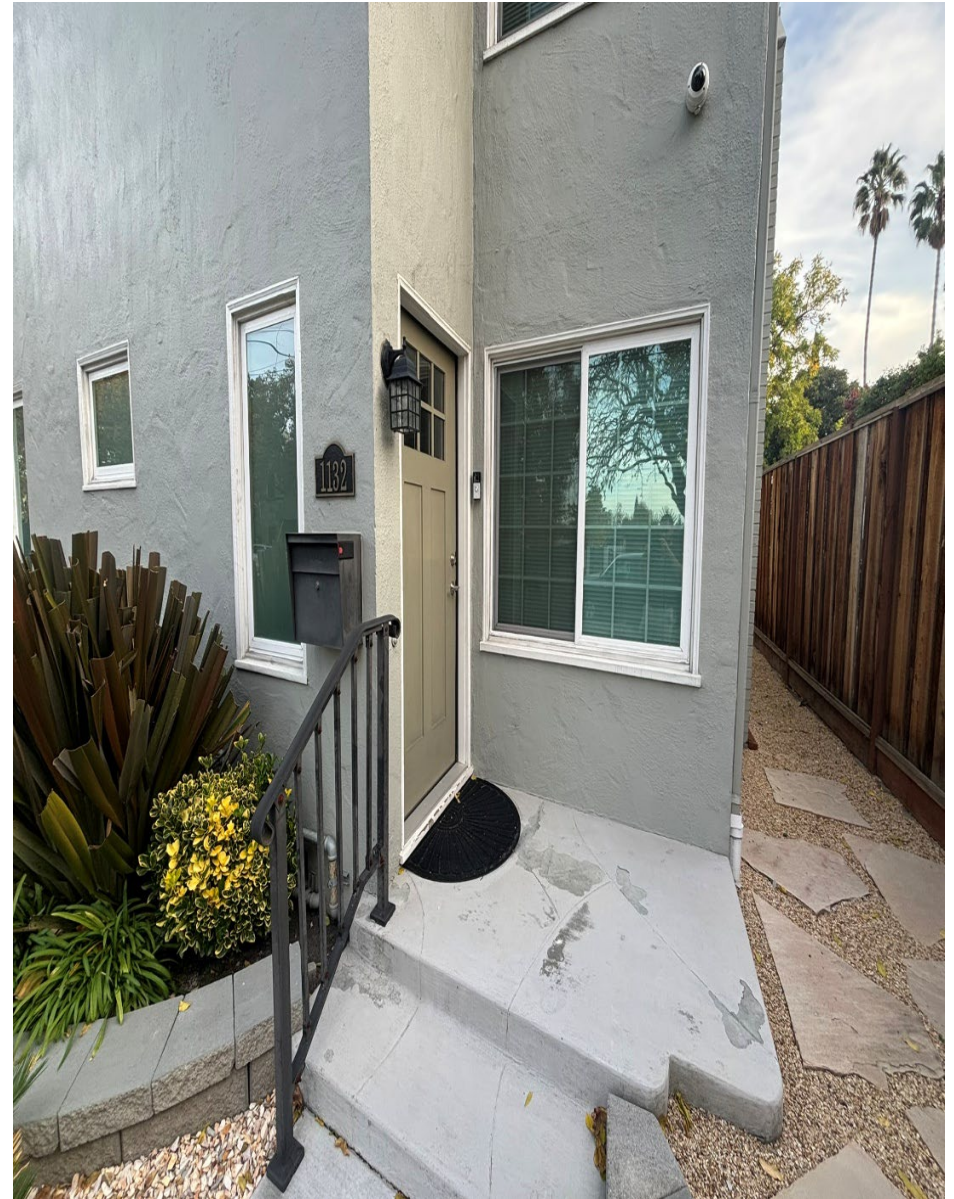
## 2<sup>nd</sup> Floor Stair Access



## 2nd Floor Front Access



## 1st Floor Front Access



# Exterior Photos





INTERSTATE  
CALIFORNIA  
**880**

**82**

**1130-1132  
McKendrie St**

**The Alameda**

**82**

# Demographics



<b>2026 SUMMARY</b>	<b>1-MILE</b>	<b>3-MILE</b>	<b>5-MILE</b>
<b>Population</b>	21,699	231,384	660,340
<b>Households</b>	7,182	88,887	240,378
<b>Average Household Size</b>	2.51	2.45	2.67
<b>Owner Occupied Housing Units</b>	3,030	30,533	95,453
<b>Renter Occupied Housing Units</b>	4,152	58,344	144,925
<b>Median Age</b>	33.2	36.3	36.9
<b>Median Household Income</b>	\$145,875	\$131,633	\$147,929
<b>Average Household Income</b>	\$199,214	\$181,244	\$199,939

# 1130-1132 McKendrie Street, San Jose



**KEON VOSSOUGH**

Vice President  
Lic. #01019117  
408.691.9776  
keon@moinc.net

**BOBBY FACCHINO**

Senior Associate  
Lic. #02178873  
408.318.0623  
bobby@moinc.net

MEACHAM/OPPENHEIMER, INC.  
8 N San Pedro St. #300  
San Jose, CA 95110  
Tel. 408.378.5900  
[www.moinc.net](http://www.moinc.net)

